

## Capital Facilities Planning

### *Questions and Answers*

---

To: Prospective Bidders

From: Sayim Malik  
Project Manager, Capital Facilities Planning

Re: Response to Questions. SU-050116

DATE: JUNE 17TH, 2016

---

1. Project Manual refers to SK1 to 4 for alternates. We cannot locate this in the bid documents. Can you please provide this drawing?

Ans: Please see attached drawings and addendum 1 to alternate 1 and 2

2. What is the duration of the Project?

Ans: The duration of project is 365 calendar days

3. Please provide link to the drawings.

Ans: The link to the drawing is as follows  
<http://www.purchase.edu/purchasemeansbusiness>

**Note: Please see attached CSK 001 and 002 for alternate 1 and CSK 003 for alternate 2 with additional notes.**



## Capital Facilities Planning

### *Addendum*

---

To: Prospective Bidders

From: Sayim Malik  
Project Manager, Capital Facilities Planning

Re: Addendum No. 1 to specifications SU-050116,

DATE: JUNE 17<sup>TH</sup> 2016.

---

Please see attached drawings and electric specification for the alternate 1 and alternate 2

#### Alternate 1:

Removal of old ceiling and light fixture and furnish and Install new light fixtures and new drop ceiling.  
Approximately 3250 sf.

The basis of design is CREE CR22-32L- 40K-S 2x2 Lay in fixture for grid ceiling.  
Total quantity of light fixtures are 38 pcs.

Provide new 3 exit signs see attached is basis of design.

Provide 16 new diffusers, attached specification attached

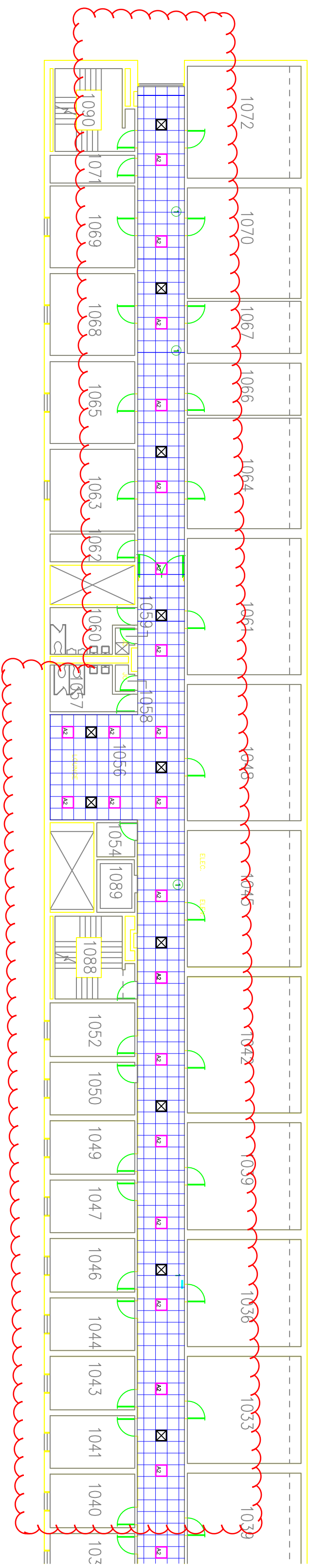
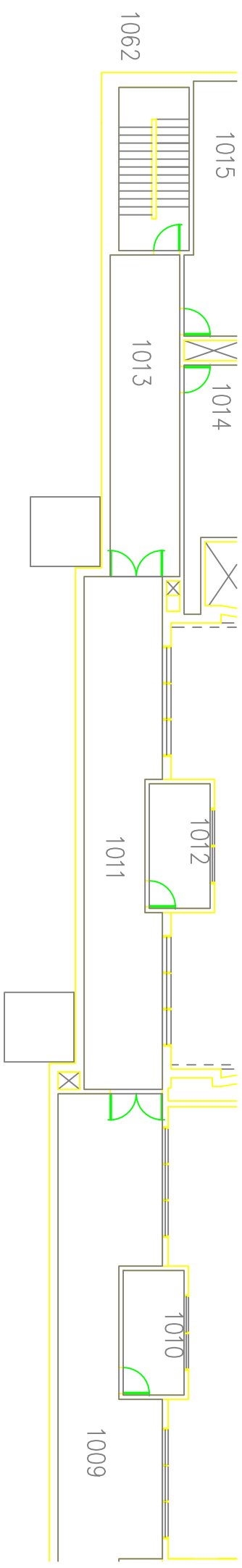
#### Alternate 2:

Removal of old ceiling and light fixture and furnish and Install new light fixtures and new drop ceiling.  
Approximately 2200 sf

The basis of design is CREE CR22-32L- 40K-S 2x2 Lay in fixture for grid ceiling.  
Total quantity of light fixtures are 34 pcs and 2 surface mounted.

Provide 8 new diffusers, attached specification attached





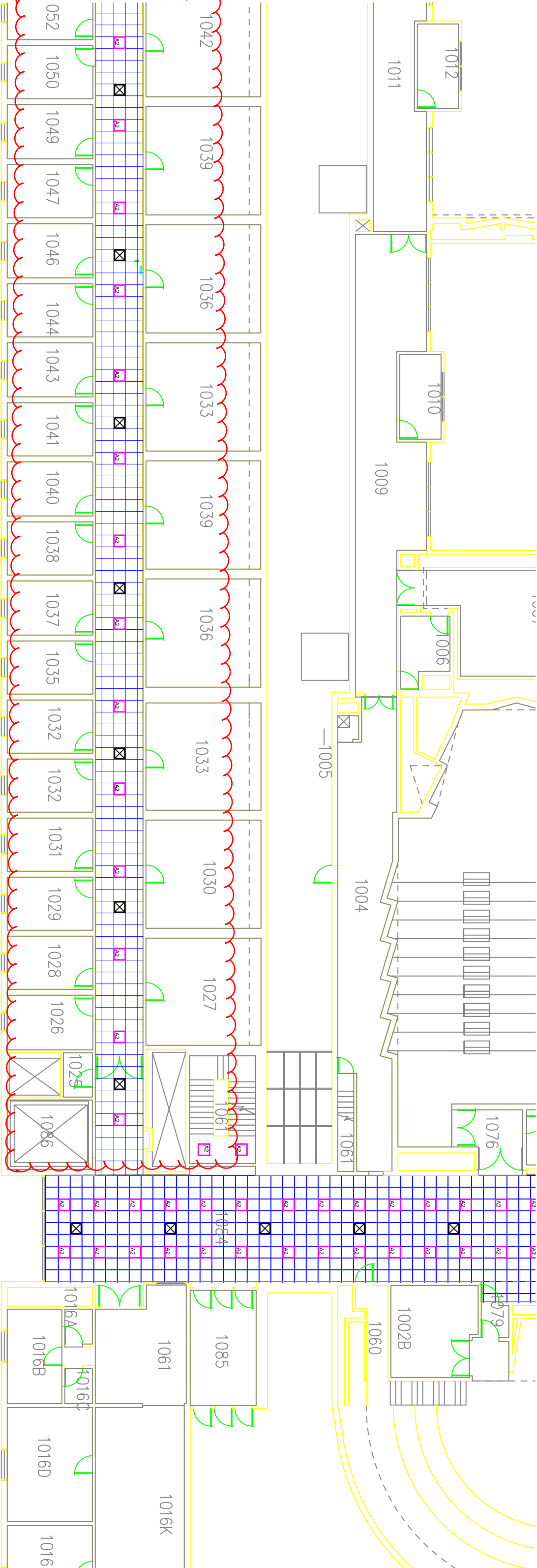
- ① Remove old Ceiling and light fixtures and Install New drop ceiling and light fixture. Refer to specification
- ② Remove old diffusers and Install New diffuser. Refer to specification
- ③ Remove old exit signs and Install new exits signs. Refer to specification
- ④ Contractor is responsible for any addition or deletion of wires required for the new light fixtures.

# PURCHASE COLLEGE

STATE UNIVERSITY OF NEW YORK  
735 ANDERSON HILL RD.  
PURCHASE, NY 10577-1400

|                 |  |
|-----------------|--|
| Project Name:   | Music Building Humidification  |
| Project Number: | #SU-050119   |
| Location:       | Music Building   |
| Scale:          | 1/16"  |
| Date:           | 06/17/16   |
| File Path:      | Z:\I-Projects\29838 HVAC Assessment\Construction\Project Manual Rebid Drawings Final Layout. |

Music Building  
Humidification  
CSK-001  
Alternate 1



- ① Remove old Ceiling and light fixtures and Install New drop ceiling and light fixture. Refer to specification
- ② Remove old diffusers and Install New diffuser. Refer to specification
- ③ Remove old exit signs and Install new exits signs. Refer to specification
- ④ Contractor is responsible for any addition or deletion of wires required for the new light fixtures.

|  |  |
|--|--|
|  |  |
|--|--|

PURCHASE

COLLEGE

STATE UNIVERSITY OF NEW YORK

735 ANDERSON HILL RD.

PURCHASE, NY 10577-1400

|                 |  |
|-----------------|--|
| Project Name:   | Music Building Humidification  |
| Project Number: | #SU-050119   |
| Location:       | Music Building   |
| Scale:          | 1/16"  |
| Date:           | 06/17/16   |
| File Path:      | Z:\I-Projects\29838 HVAC Assessment\Construction\Project Manual Rebid Drawings Final Layout. |

# PURCHASE

STATE UNIVERSITY OF NEW YORK

735 ANDERSON HILL RD.

PURCHASE, NY 10577-1400

|                 |  |
|-----------------|--|
| Project Name:   | Music Building Humidification  |
| Project Number: | #SU-050119   |
| Location:       | Music Building   |
| Scale:          | 1/16"  |
| Date:           | 06/17/16   |
| File Path:      | Z:\1-Projects\29638 HVAC Assessment\Construction\Project Manual Rebid Drawings Final Layout. |

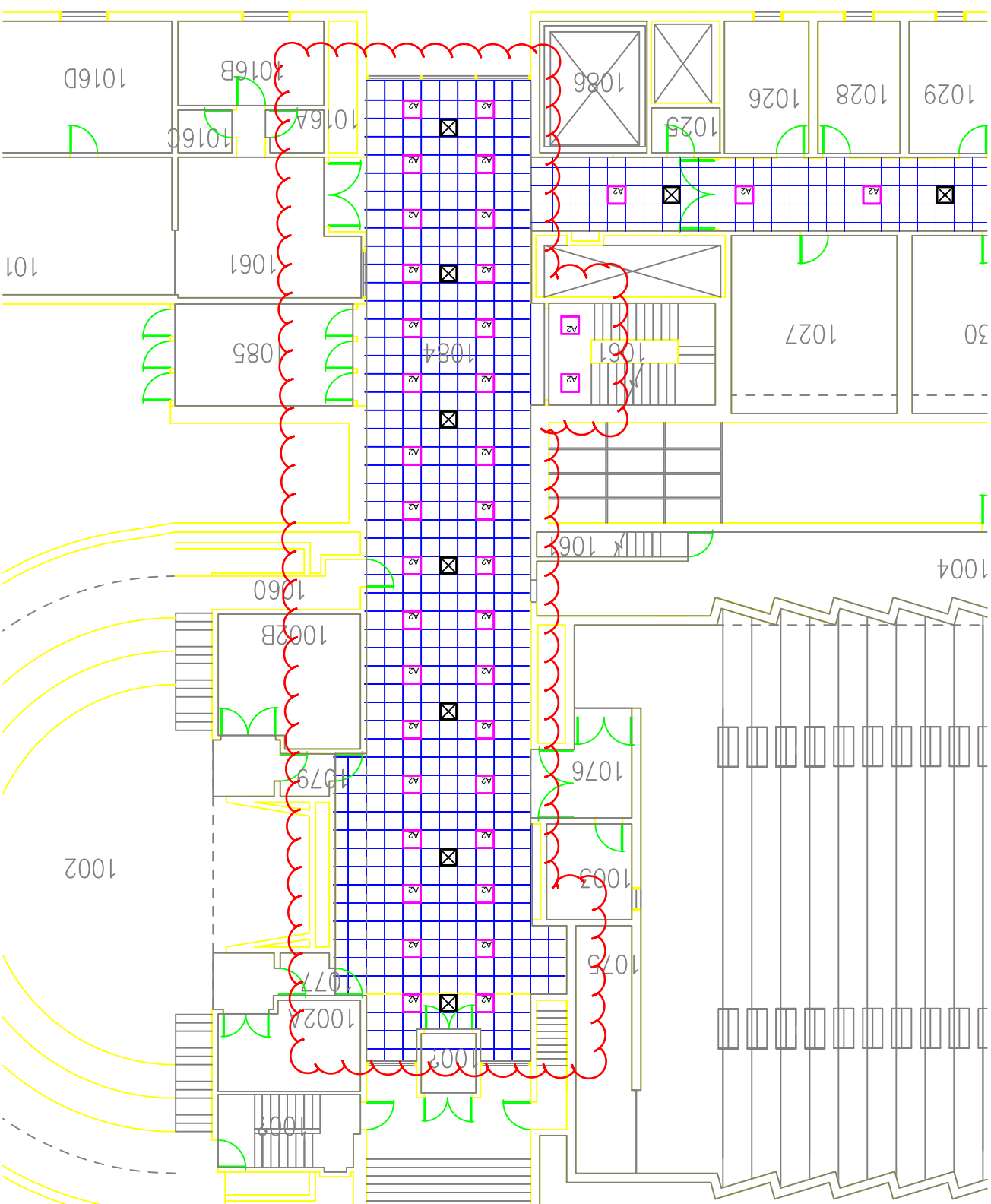
# Music Building

# Humidification

CSK-003

## Alternate 2

- ① Remove old Ceiling and light fixtures and Install New drop ceiling and light fixture. Refer to specification
- ② Remove old diffusers and Install New diffuser. Refer to specification
- ③ Coordinating and installing back all smoke heads, cameras and location for sprinkler is contractors responsibility.
- ④ Contractor is responsible for any addition or deletion of wires required for the new light fixtures.





# STEEL RETURN GRILLES & REGISTERS FIXED BLADES • LAY-IN T-BAR MODELS: 6145H(-O), 6145V(-O), 61FH(-O) AND 61FV(-O) TYPE L AND A FRAME

☐ **MODEL 6145H**  
Single Deflection Grille  
Fixed 45° Horizontal Blades

☐ **MODEL 6145H-O**  
Single Deflection Register  
Fixed 45° Horizontal Blades  
(Includes O. B. Damper)

☐ **MODEL 6145V**  
Single Deflection Grille  
Fixed 45° Vertical Blades

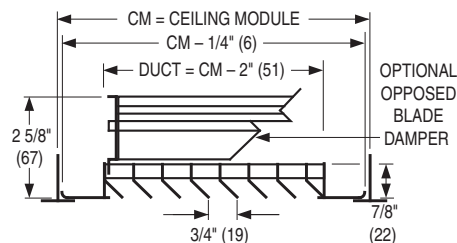
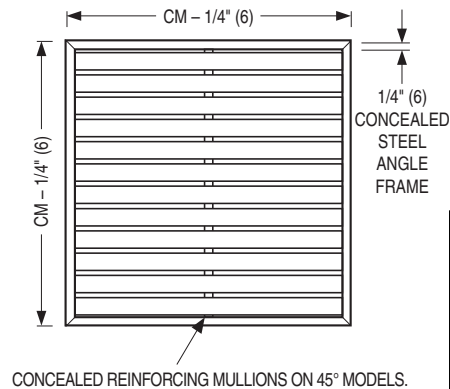
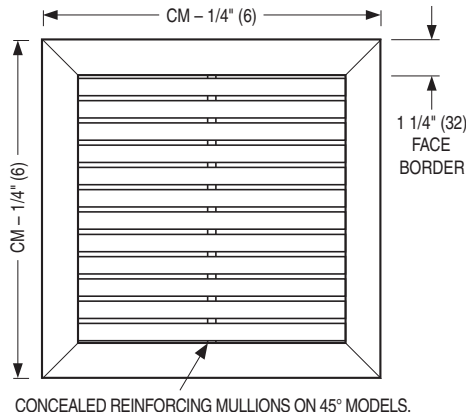
☐ **MODEL 6145V-O**  
Single Deflection Register  
Fixed 45° Vertical Blades  
(Includes O. B. Damper)

☐ **MODEL 61FH**  
Single Deflection Grille  
Fixed 0° Horizontal Blades

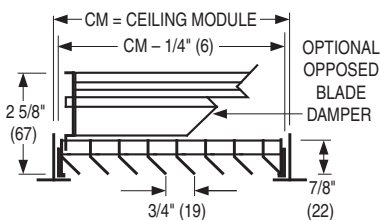
☐ **MODEL 61FH-O**  
Single Deflection Register  
Fixed 0° Horizontal Blades  
(Includes O. B. Damper)

☐ **MODEL 61FV**  
Single Deflection Grille  
Fixed 0° Vertical Blades

☐ **MODEL 61FV-O**  
Single Deflection Register  
Fixed 0° Vertical Blades  
(Includes O. B. Damper)



**Model 6145H shown**  
Horizontal Blades



**Model 6145H shown**  
Horizontal Blades

| AVAILABLE CEILING MODULE SIZES |                   |                 |
|--------------------------------|-------------------|-----------------|
| Imperial Modules               |                   | Metric Modules  |
| Imperial Units (in.)           | Metric Units (mm) | S.I. Units (mm) |
| 12 x 12                        | 305 x 305         | 300 x 300       |
| 24 x 12                        | 610 x 305         | 600 x 300       |
| 36 x 12                        | 914 x 305         | 900 x 300       |
| 48 x 12                        | 1219 x 305        | 1200 x 300      |
| 20 x 20                        | 508 x 508         | 500 x 500       |
| 24 x 24                        | 610 x 610         | 600 x 600       |
| 36 x 24                        | 914 x 610         | 900 x 600       |
| 48 x 24                        | 1219 x 610        | 1200 x 600      |

☐ **Type L – Steel Frame/Border  
Lay-in T-Bar**

☐ **Type A – Concealed Angle Frame  
Lay-in T-Bar (non-ducted applications)**

## DESCRIPTION:

- Construction: Corrosion-resistant steel. The Type L roll-formed frame is mechanically interlocked, with reinforced mitered corners and has a 1 1/4" (32) face. The Type A frame is a steel 1/4" (6) angle frame and is concealed when installed in T-Bar. Roll-formed blades on 3/4" (19) centers are fixed at 0 or 45 degrees. The 45 degree models utilize a concealed rear reinforcing mullion and utilize a single blade pack that produces a continuous louvered blade appearance. 0 degree models utilize a visible face mullion when blade length exceeds 16" (406).
- Optional roll-formed steel opposed blade damper has a screwdriver slot operator accessible through face of register.
- Type A frame: Minimum size is 4" x 4" (102 x 102).  
Maximum size is 48" x 48" (1219 x 1219).
- Type L frame: Minimum Ceiling Module size is 12" x 12" (305 x 305).  
Maximum Ceiling Module size is 48" x 24" (1219 x 610).
- Standard finish is AW Appliance White.

## OPTIONS:

- Finish:  
☐ SP Special \_\_\_\_\_.

## SCHEDULE TYPE:

PROJECT:

ENGINEER:

CONTRACTOR:

Dimensions are in inches (mm).

DATE

B SERIES

SUPERSEDES

DRAWING NO.

2 - 1 - 11

6100

NEW

6100-4



EXIT LIGHTING

ATLITE®

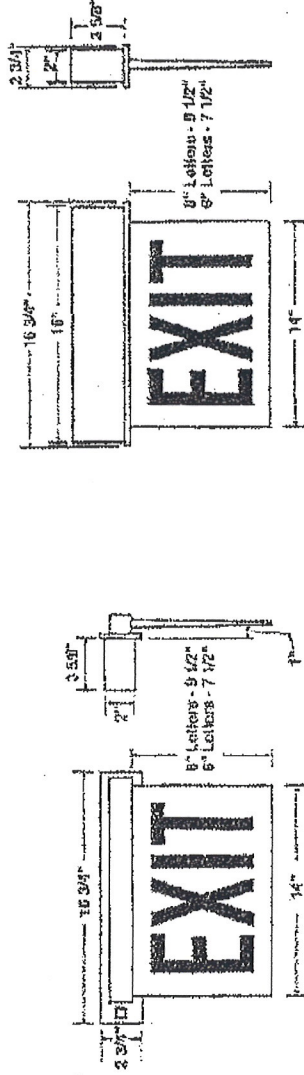
DESCRIPTION

The Marathon Series Exits are designed for architectural excellence and minimal protrusion. The crystal clear wedge shaped panel allows architectural details to shine through while providing excellent light distribution and exit visibility. Long life, energy efficient LED lamps reduce energy costs and eliminate routine lamp maintenance.

DIMENSIONS

Recessed, Wall Mount

Recessed, Ceiling Mount



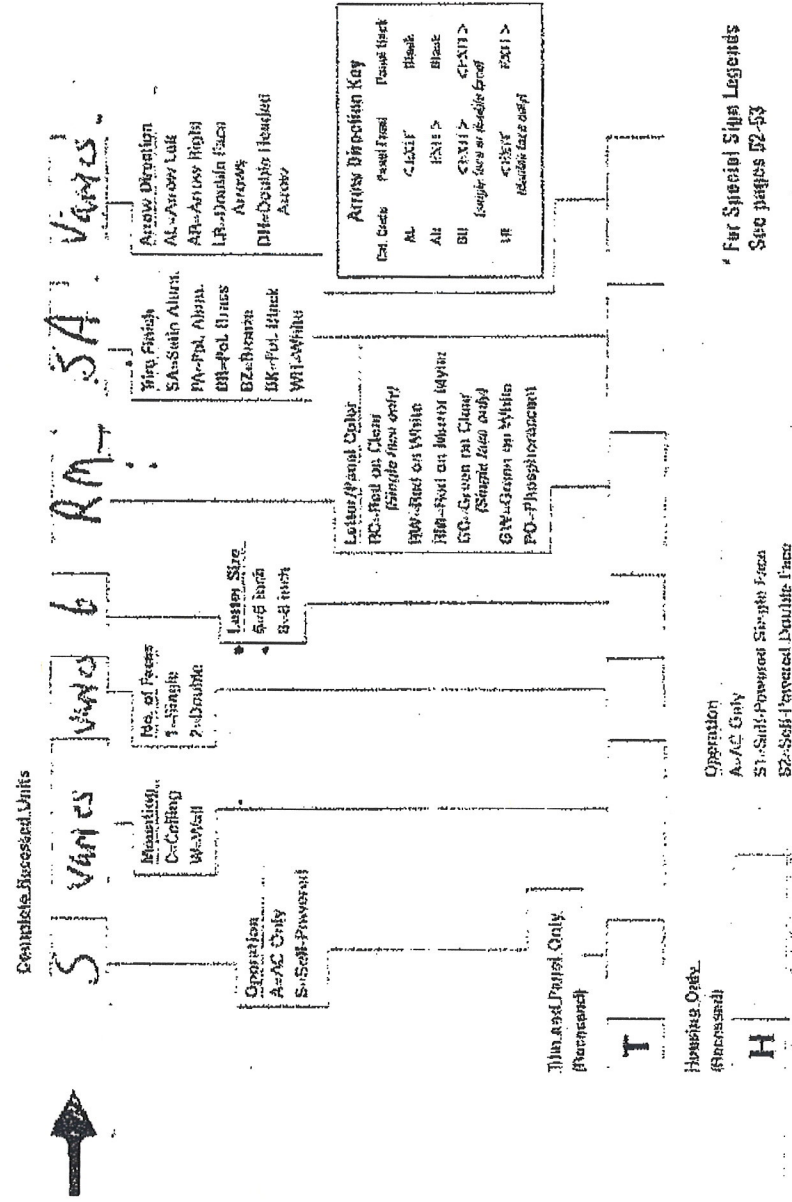
COMPLETE UNIT

| Operation      | Mounting  | Number of Faces | Letter Size | Letter Color           | Trim Finish   | Arrow Direction         |
|----------------|-----------|-----------------|-------------|------------------------|---------------|-------------------------|
| A AC Only      | 1 Ceiling | 1 Single        | 6 1/8"      | BC Red on Clear        | SA Satin Alum | AL Arrow Right          |
| S Self-powered | 2 Wall    | 2 Double        | 8 1/8"      | AW Red on White        | PA Pol. Alum  | AR Arrow Right          |
|                |           |                 |             | AM Red on Mirror Mylar | BL Pol. Brass | LB Double Face Arrows   |
|                |           |                 |             | GC Green on Clear      | BZ Bronze     | DH Double Headed Arrows |
|                |           |                 |             | (Arabic face only)     | BK Pol. Black |                         |
|                |           |                 |             | GW Green on White      | WH White      |                         |

Trim and Panel Only T  
Housing Only H  
Operation  
A AC Only  
S1 Self-powered single face  
S2 Self-powered double face

OPTIONS AND ACCESSORIES

Notes: Green letters available on 6" signs only  
N.Y.R.S.A. Cataloger (approx) #36168  
Custom signs available, contact factory



For Special Sign Legends  
See pages 52-53

COOPER LIGHTING