

DC System Size @ STC: 7. 77.00 kW
 8. 43.12 kW
 9. 157.08 kW
 Panels: 7. 275 Standard Efficiency 280W Panels
 8. 154 Standard Efficiency 280W Panels
 9. 561 Standard Efficiency 280W Panels
 Inverters: Central/String Inverters
 Stringing: 11 Panels per String
 Racking: 7. 10 Degree PanelClaw Ballasted System
 8. and 9. S5 Clipped to Metal Seams
 Other Equipment:
 Monitoring: Basic Locus Monitoring

Roof Height: ~15 - 40 ft.
 Roof Tilt: 7. 0°, 8. 35° and 9. 45°
 Azimuth: 7. and 8. 163°, 9. 253°

② System Specs



③ Google aerial
 Equipment location details

REVISION HISTORY

REV#	DATE	REV BY	CHANGE
0	5/23/12	CS	
1	-	-	-
2	-	-	-
3	-	-	-
4	-	-	-
5	-	-	-
6	-	-	-

CHECKED BY: ---

PROJ# PURCH005385.A.0

LAYOUT

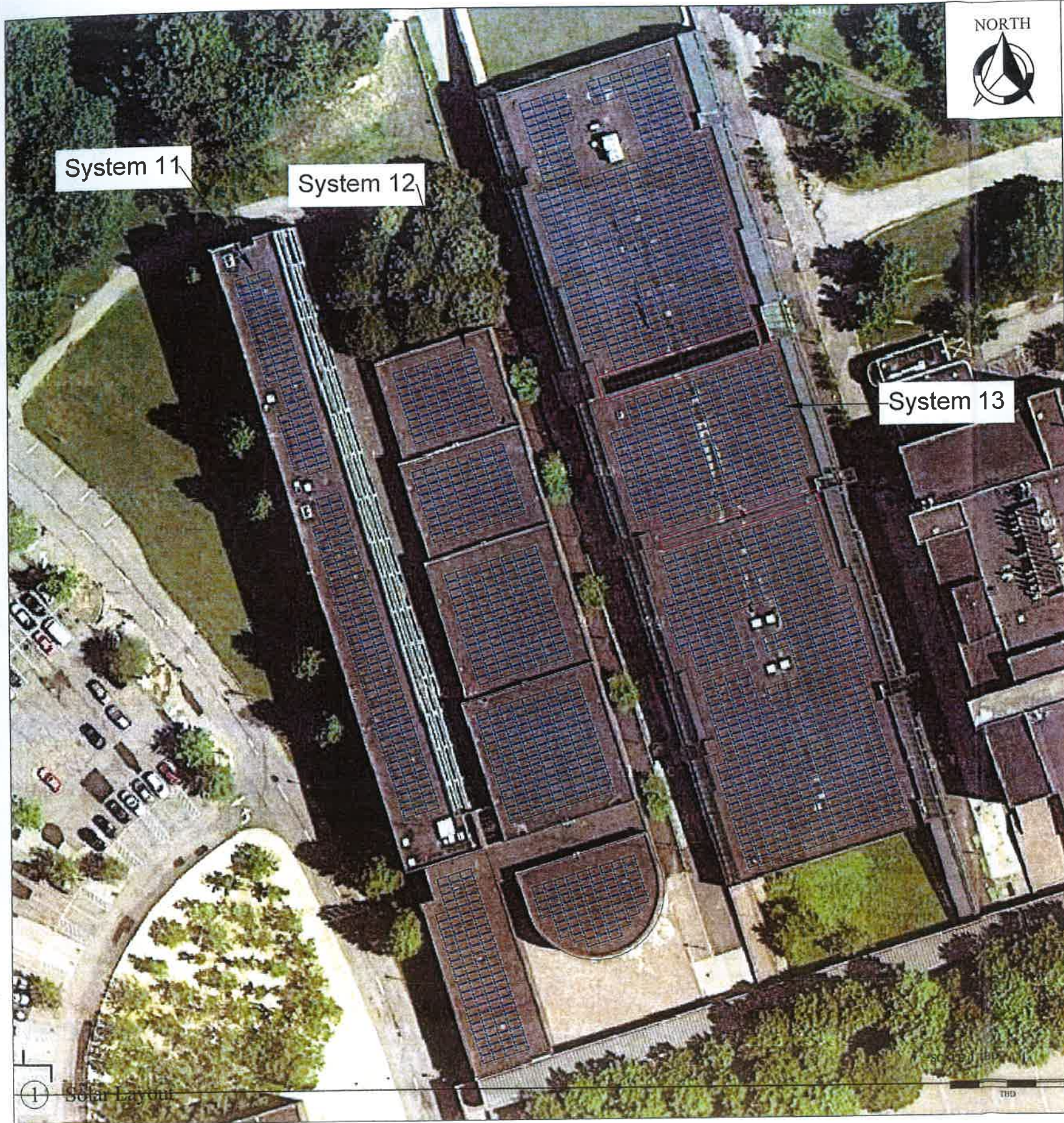
SUNY Purchase
 735 Anderson Hill Road
 Purchase, NY 10577

Drawing to scale if bar below is 1":
 1"



36 Midland Ave
 Port Chester, NY 10573
 (P) 914-637-9700
 (F) 914-637-9713

① Solar Layout



System 11

System 12

System 13

DC System Size @ STC: 11. 77.0 kW
 12. 123.20 kW
 13. 320.32 kW
 Panels: 11. 275 Standard Efficiency 280W Panels
 12. 440 Standard Efficiency 280W Panels
 13. 1,144 Standard Efficiency 280W Panels
 Inverters: Central/String Inverters
 Stringing: 11 Panels per String
 Racking: 10 Degree PanelClaw Ballasted System
 Other Equipment:
 Monitoring: Basic Locus Monitoring

Roof Height: ~ 30 ft.
 Roof Tilt: 0°
 Azimuth: 163°

② System Specs



③ Google aerial
 Equipment location details

REVISION HISTORY

REV#	DATE	REV BY	CHANGE
0	5/23/12	CS	
1			
2			
3			
4			
5			
6			

CHECKED BY: ---

PROJ# PURCH005385.A.0

LAYOUT

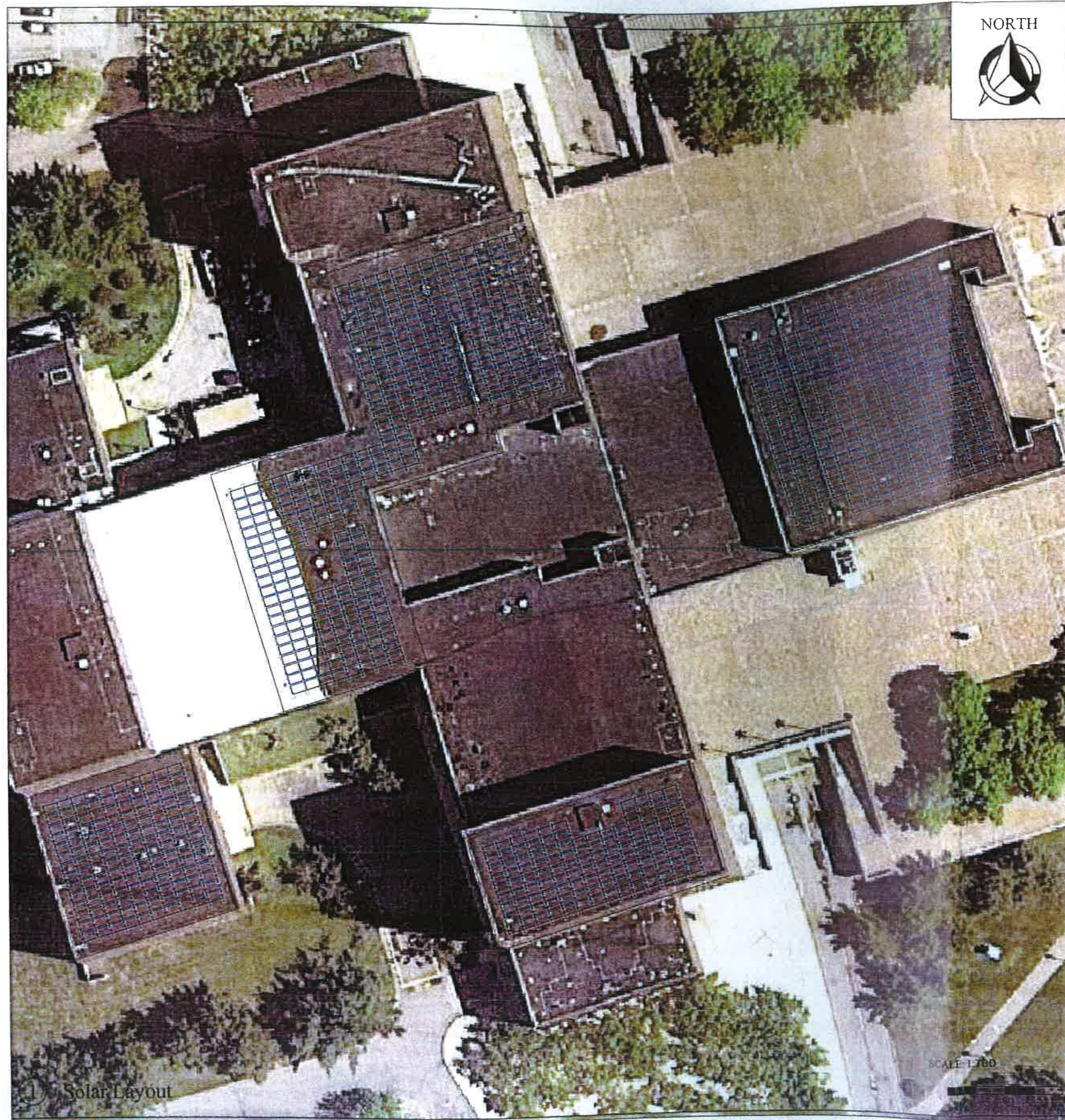
SUNY Purchase
 735 Anderson Hill Road
 Purchase, NY 10577

Drawing to scale if bar below is 1" = 1'



36 Midland Ave
 Port Chester, NY 10573
 (P) 914-637-9700
 (F) 914-637-9713

① Solar Layout



DC System Size @ STC: 10,258.72 kW
 Panels: 924 Standard Efficiency 280W Panels
 Inverters: Central/String Inverters
 Stringing: 11 Panels per String
 Racking: 10 Degree PanelClaw Ballasted System
 Other Equipment:
 Monitoring: Basic Locus Monitoring

Roof Height: ~20 - 40 ft.
 Roof Tilt: 0°
 Azimuth: 163°

Other Site Notes:

② System Specs



③ Google aerial ...
 Equipment location details

REVISION HISTORY

REV#	DATE	REV BY	CHANGE
0	5/23/12	CS	
1	-	-	-
2	-	-	-
3	-	-	-
4	-	-	-
5	-	-	-
6	-	-	-

CHECKED BY: ---

PROJ# PURCH005385.A.0

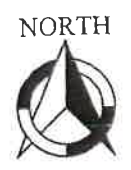
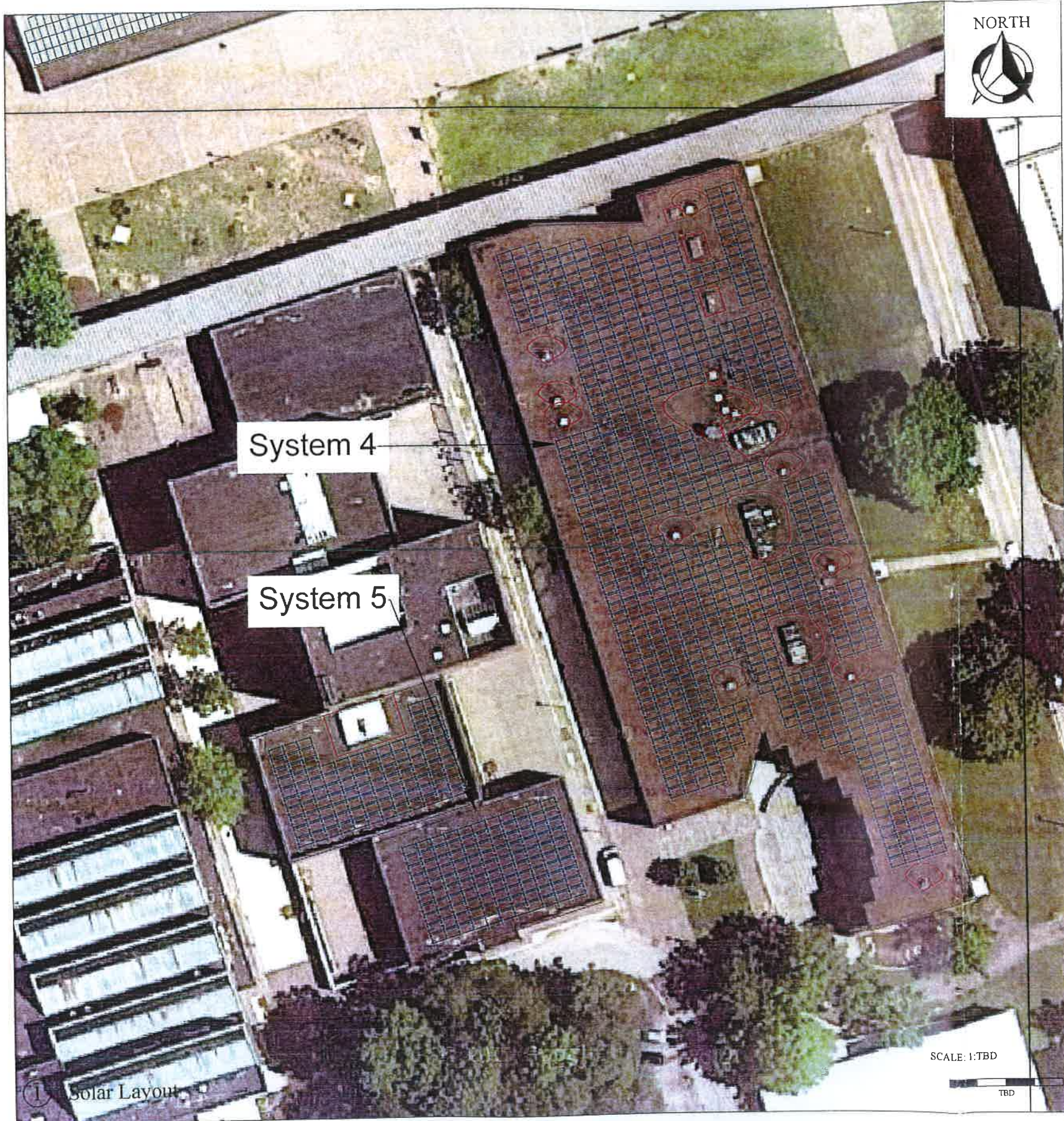
LAYOUT

SUNY Purchase
 735 Anderson Hill Road
 Purchase, NY 10577

Drawing to scale if bar below is 1":
 1"



36 Midland Ave
 Port Chester, NY 10573
 (P) 914-637-9700
 (F) 914-637-9713



DC System Size @ STC:
 4. 197.12 kW
 5. 58.52 kW
 Panels:
 4. 704 Standard Efficiency 280W Panels
 5. 209 Standard Efficiency 280W Panels
 Inverters: Central/String Inverters
 Stringing: 11 Panels per String
 Racking: 10 Degree PanelClaw Ballasted System
 Other Equipment:
 Monitoring: Basic Locus Monitoring

Roof Height: ~30 ft.
 Roof Tilt: 0°
 Azimuth: 163°

Other Site Notes:
 ② System Specs



③ Google aerial
 Equipment location details

REVISION HISTORY

REV#	DATE	REV BY	CHANGE
0	5/23/12	CS	
1	-	-	-
2	-	-	-
3	-	-	-
4	-	-	-
5	-	-	-
6	-	-	-

CHECKED BY: ---

PROJ# PURCH005385.A.0

LAYOUT

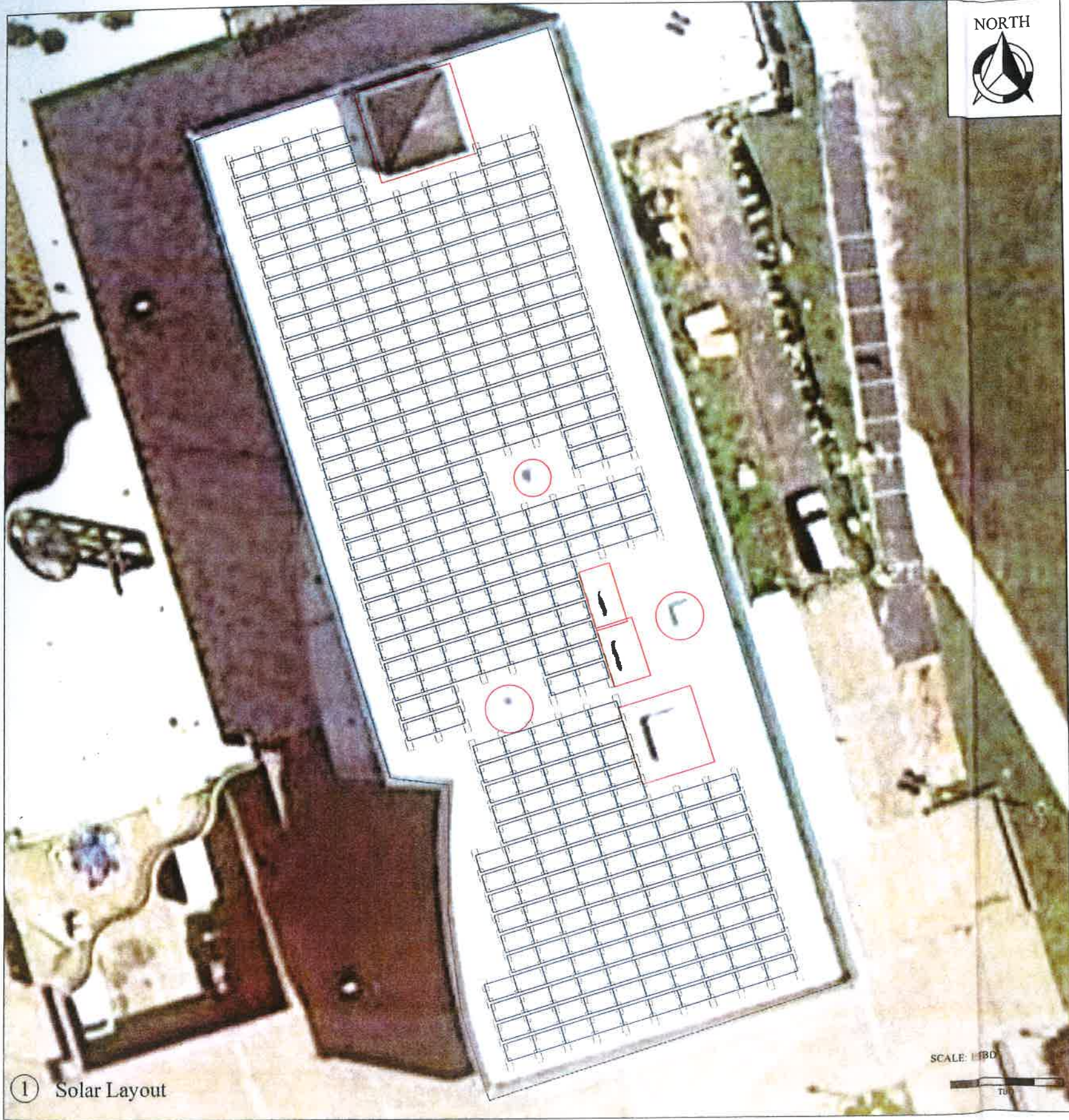
SUNY Purchase
 735 Anderson Hill Road
 Purchase, NY 10577

Drawing to scale if bar below is 1"
 1"

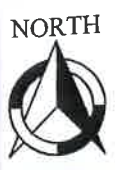


36 Midland Ave
 Port Chester, NY 10573
 (P) 914-637-9700
 (F) 914-637-9713

① Solar Layout



① Solar Layout



DC System Size @ STC: 6.9856 kW
 Panels: 352 Standard Efficiency 280W Panels
 Inverters: Central/String Inverters
 Stringing: 11 Panels per String
 Racking: 10 Degree PanelClaw Ballasted System
 Other Equipment:
 Monitoring: Basic Locus Monitoring

Roof Height: ~30 ft.
 Roof Tilt: 0°
 Azimuth: 163°

Other Site Notes:

② System Specs



③ Google aerial
 Equipment location details

REVISION HISTORY

REV#	DATE	REV BY	CHANGE
0	5/23/12	CS	
1	-	-	-
2	-	-	-
3	-	-	-
4	-	-	-
5	-	-	-
6	-	-	-

CHECKED BY: ---

PROJ# PURCH005385.A.0

LAYOUT

SUNY Purchase
 735 Anderson Hill Road
 Purchase, NY 10577

Drawing to scale if bar below is 1":
 1"



36 Midland Ave
 Port Chester, NY 10573
 (P) 914-637-9700
 (F) 914-637-9713