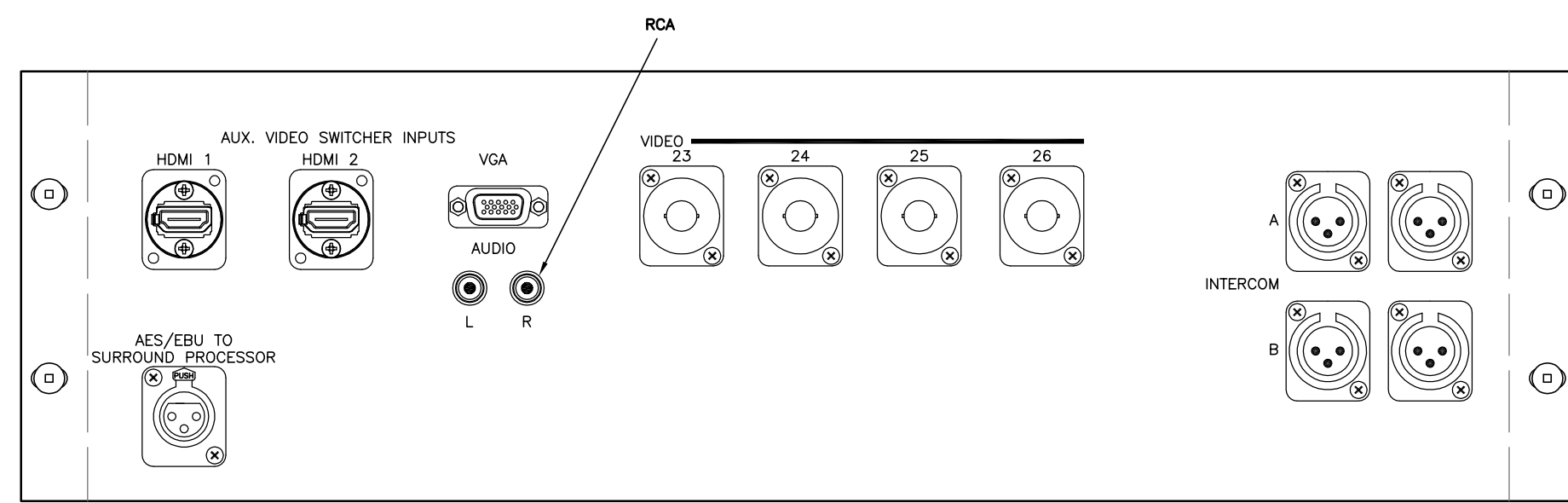
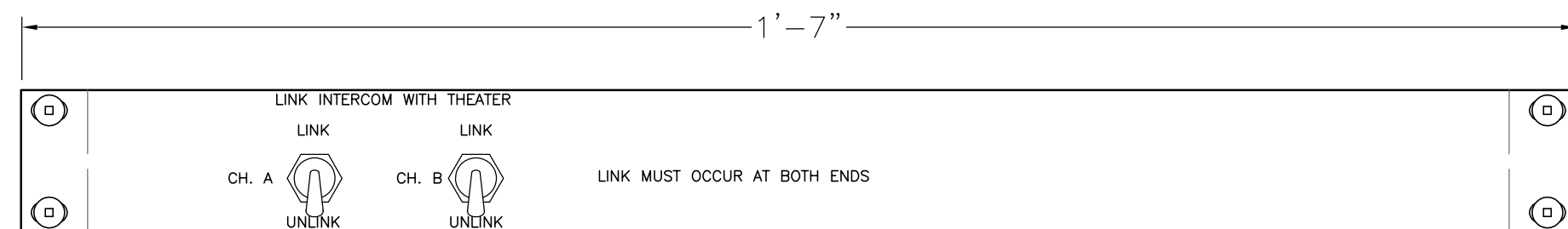


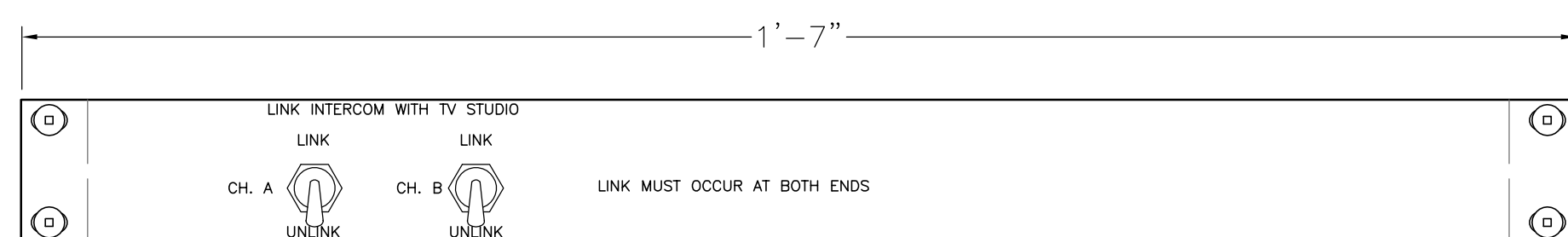
THEATER



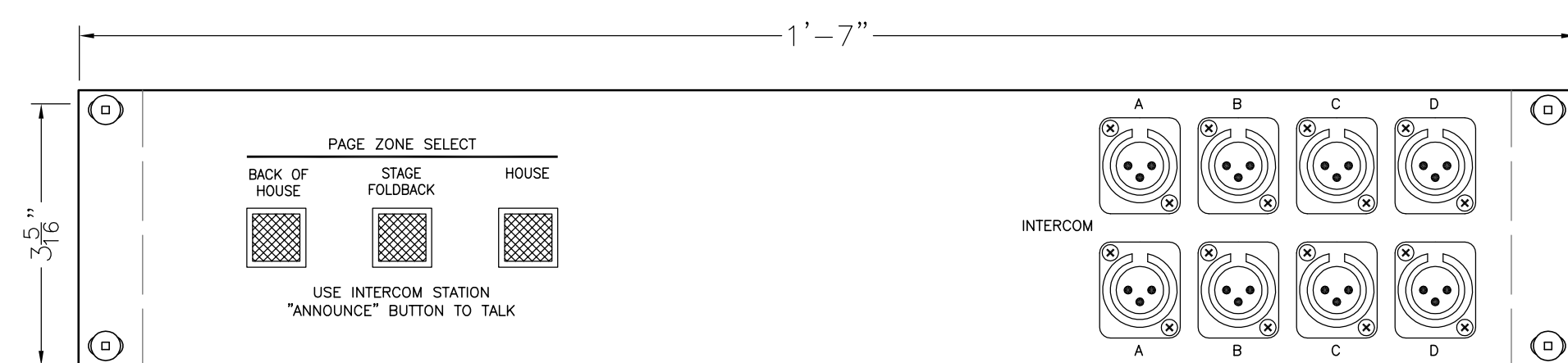
AUX VIDEO RACK PANEL – BOOTH RACK



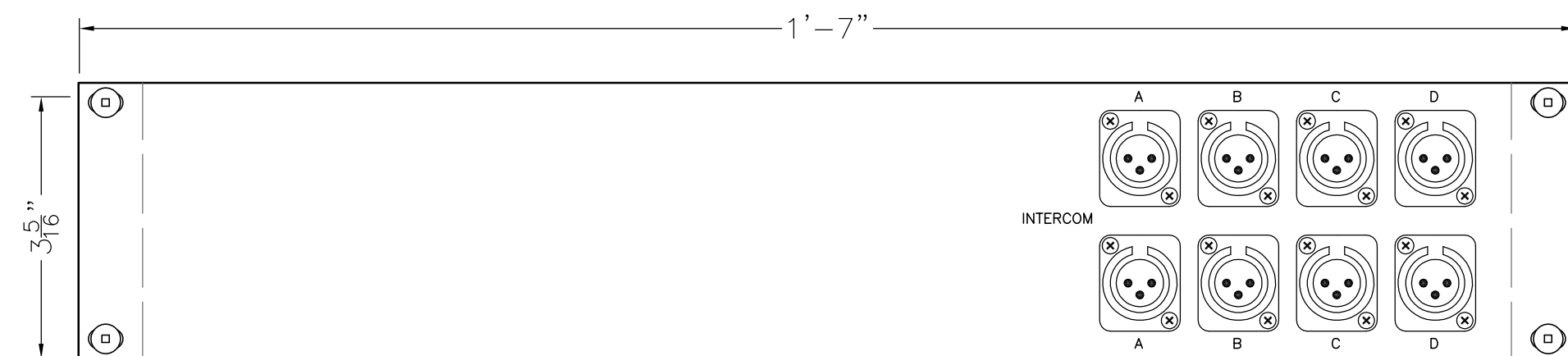
INTERCOM LINKING PANEL – TV STUDIO CONTROL ROOM RACK



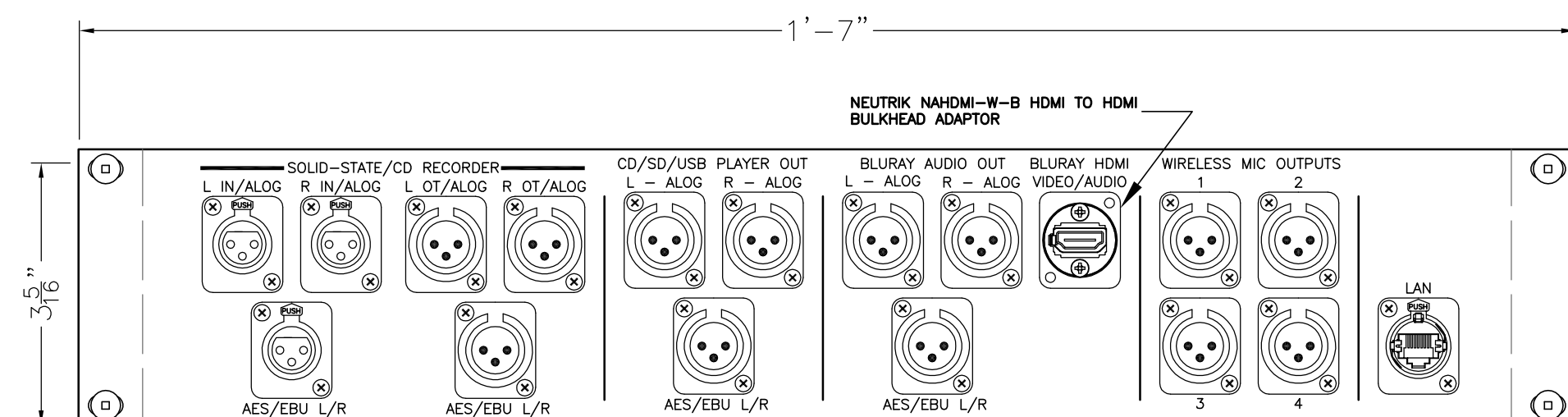
INTERCOM LINKING PANEL – THEATER BOOTH RACK



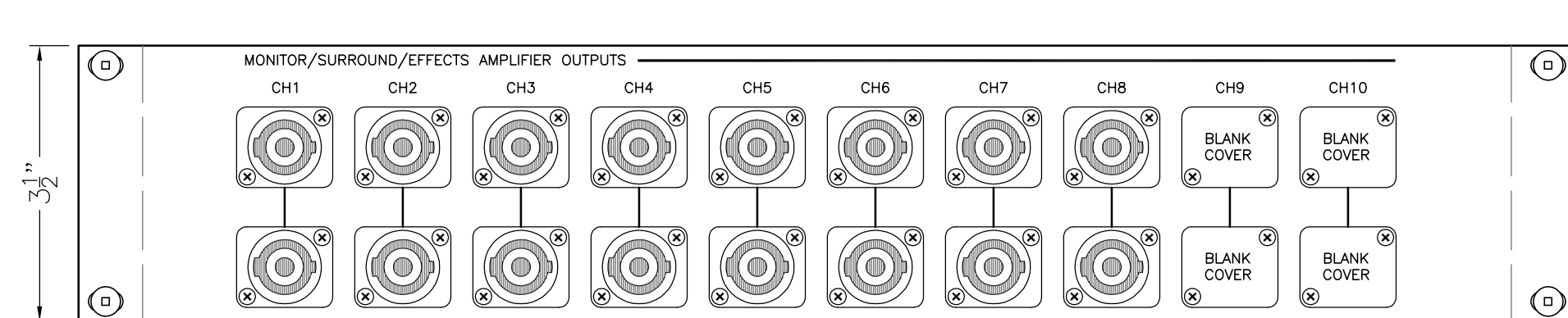
PAGING PANEL – STAGE MANAGER'S PORTABLE RACK



INTERCOM PANEL – MOBILE ANCILLARY RACK

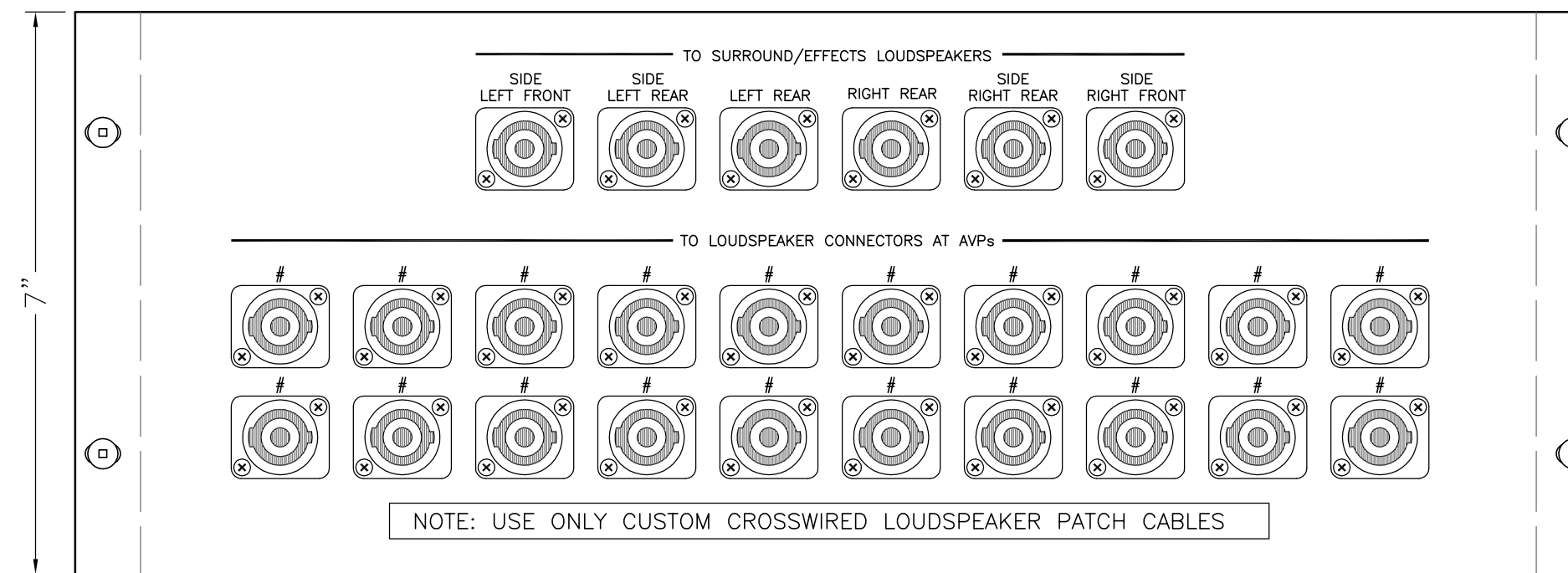


MOBILE RACK CONNECTION PANEL – MOBILE ANCILLARY RACK



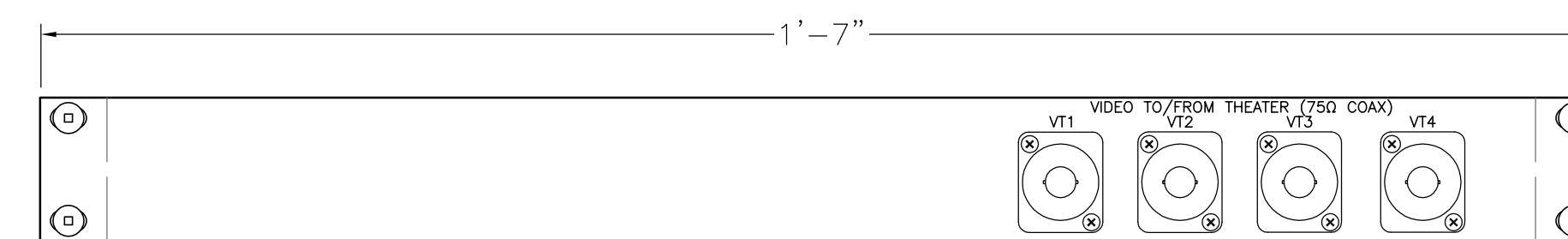
SURROUND/EFFECTS/AUX AMPLIFIER OUTPUT PANEL – AMPLIFIER RACK

THEATER

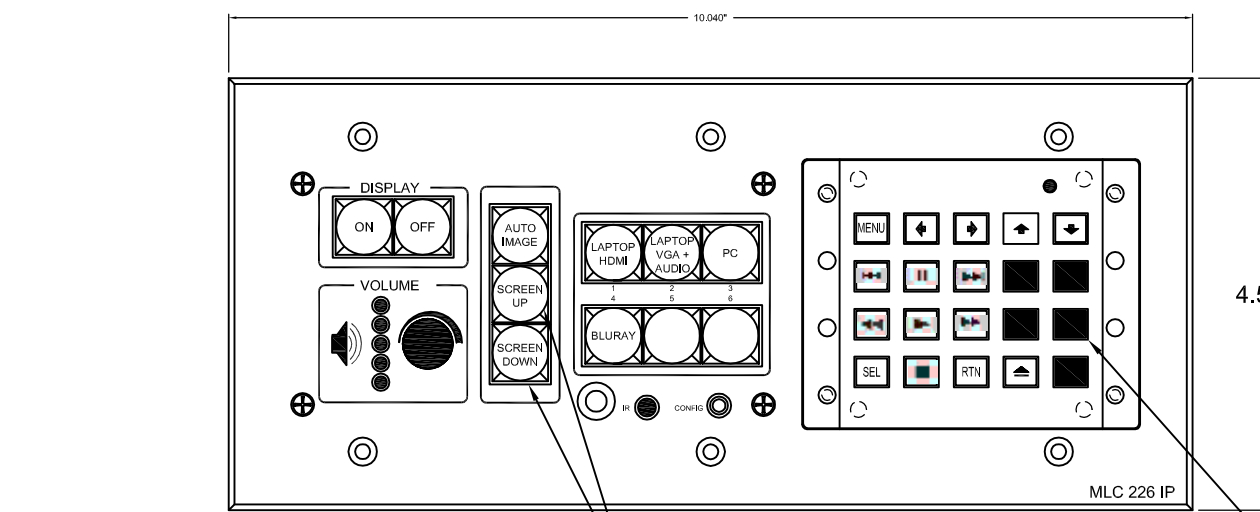


LOUDSPEAKER PATCH PANEL – AMPLIFIER RACK

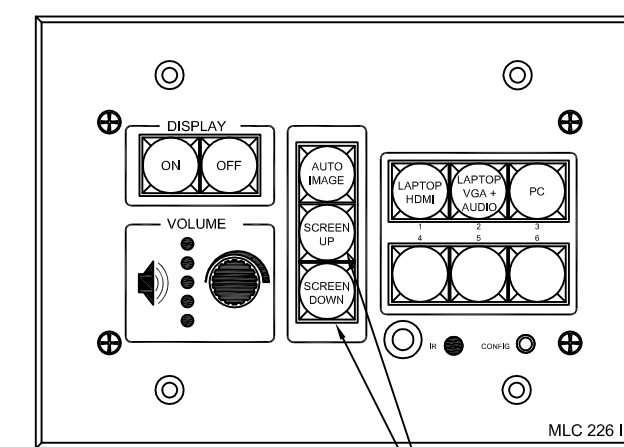
LECTURE HALL



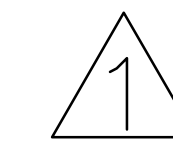
VIDEO RACK PANEL – LECTURE HALL RACK



CONTROL PANELS AT CLASSROOM LECTERNS



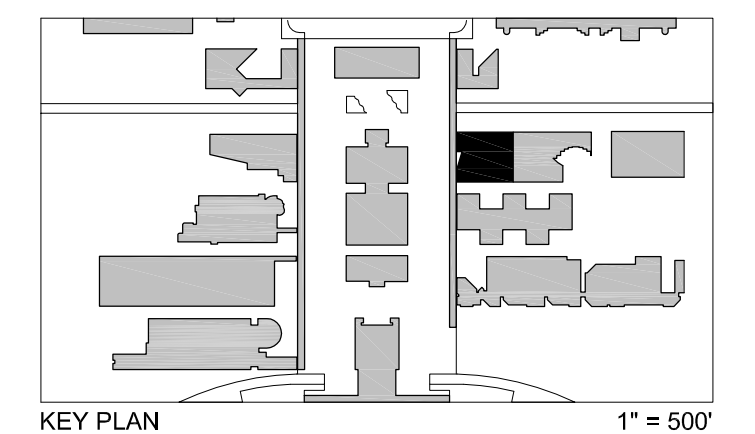
CONTROL PANELS AT CONFERENCE SEMINAR ROOMS



9/26/2013 AV CHANGES PER SUNY PURCHASE REQUIREMENTS AND DESIGN DEVELOPMENT

GROUP III 9/22/2014 AV ELECTRONICS SYSTEMS ISSUED FOR BID

BUL. #56 11/22/2013 BULLETIN #56 (WITH RESPECT TO AV, EA AND EAP DRAWINGS, INCLUDES "DELTA 1" CHANGES)



KEY PLAN 1" = 50'

AV323 CONTROL AND RACK PANEL ELEVATIONS

Scale: 6" = 1'-0"

3 OCTOBER 2011

SUCF Project No. 29401 Humanities Building Renovation SUNY Purchase College 735 Anderson Hill Road, Purchase, New York 10577

Robert Silman Associates, PC 88 University Place, New York, NY 10003

Lakhani & Jordan Engineers 315 Madison Avenue Suite 1001, New York, NY 10017

CHA 111 Winners Circle, Albany, NY 12205

Mathews Nielsen Landscape Architects, PC 120 Broadway Suite 1040, New York, NY 10271

Tilloston Design Associates 40 Worth Street Suite 1650, New York, NY 10013

Sustainable Performance Consulting, INC Webster Woods #206 807 Ridge Road, Webster, NY 14580

TM Technology Partners, Inc. 250 West 39th Street 9th FL, New York, NY, 10018

Kirkegaard Associates 601 West Adams Street, Chicago, IL, 60607

Adelaide Environmental Health Associates, Inc. 1511 Route 22 Suite C24 Brewster, NY, 10509

Argus Architecture & Preservation, P.C. 297 River Street Suite 303, Troy, NY 12180

PANELS ON THIS SHEET BY GROUP III AV SYSTEMS ELECTRONICS INTEGRATING CONTRACTOR