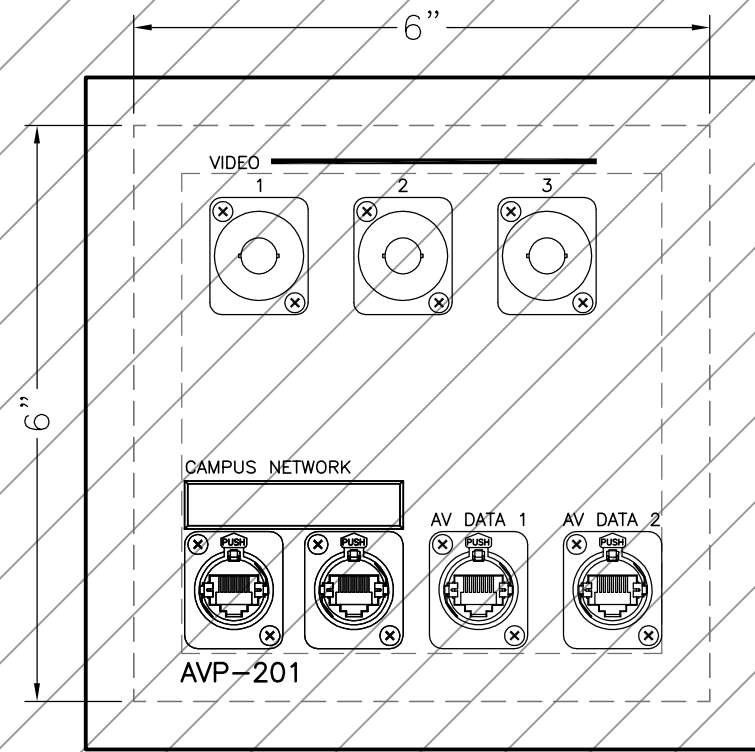


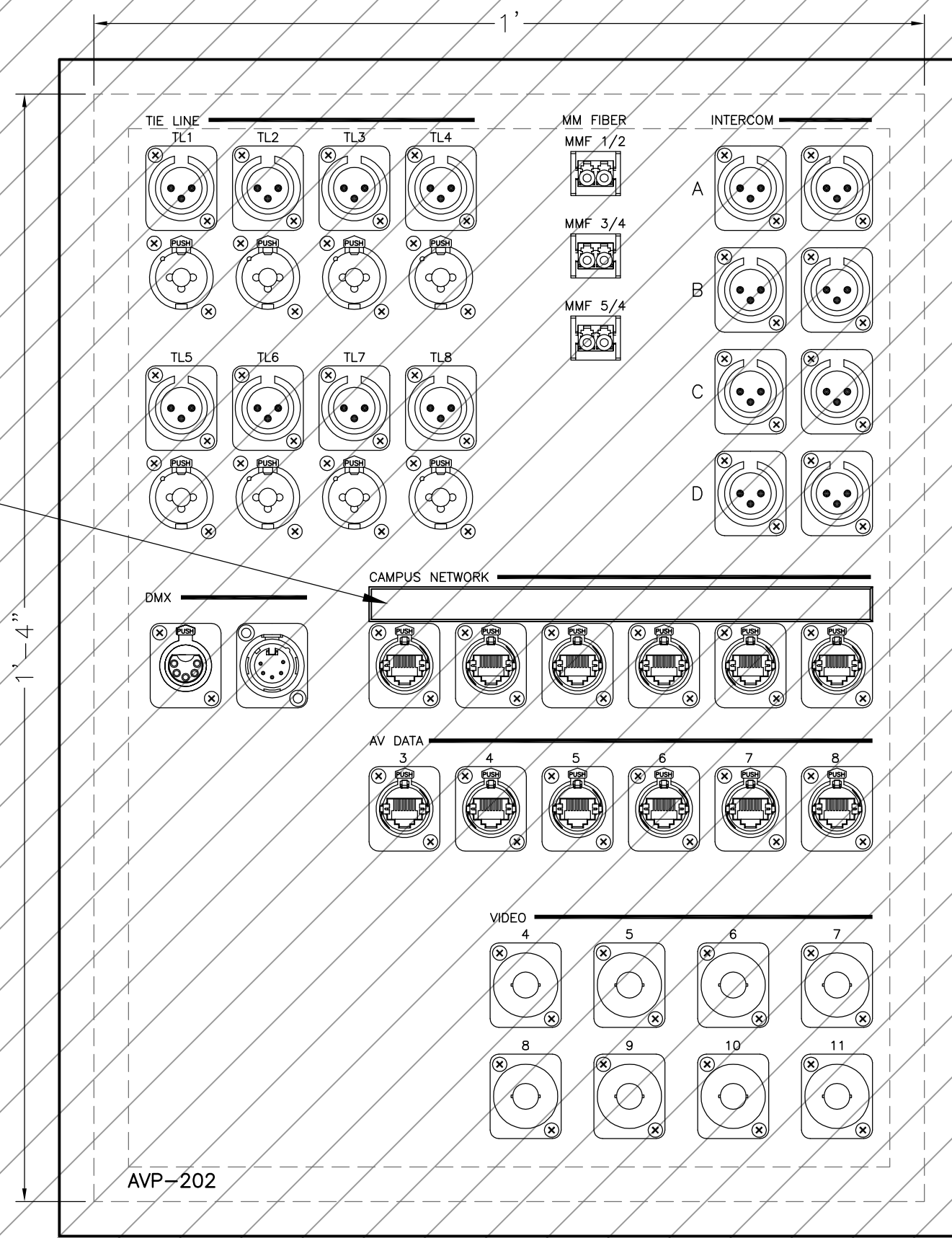
PANELS ON THIS SHEET BY  
AV INFRASTRUCTURE

EQUIPMENT SHOWN WITH THIS  
BACKGROUND HATCH PATTERN  
IS PROVIDED PER BASE  
INFRASTRUCTURE CONTRACT  
(NOT INCLUDED IN GROUP III AV  
SYSTEMS OR EXTENDED AV  
INFRASTRUCTURE CONTRACT).

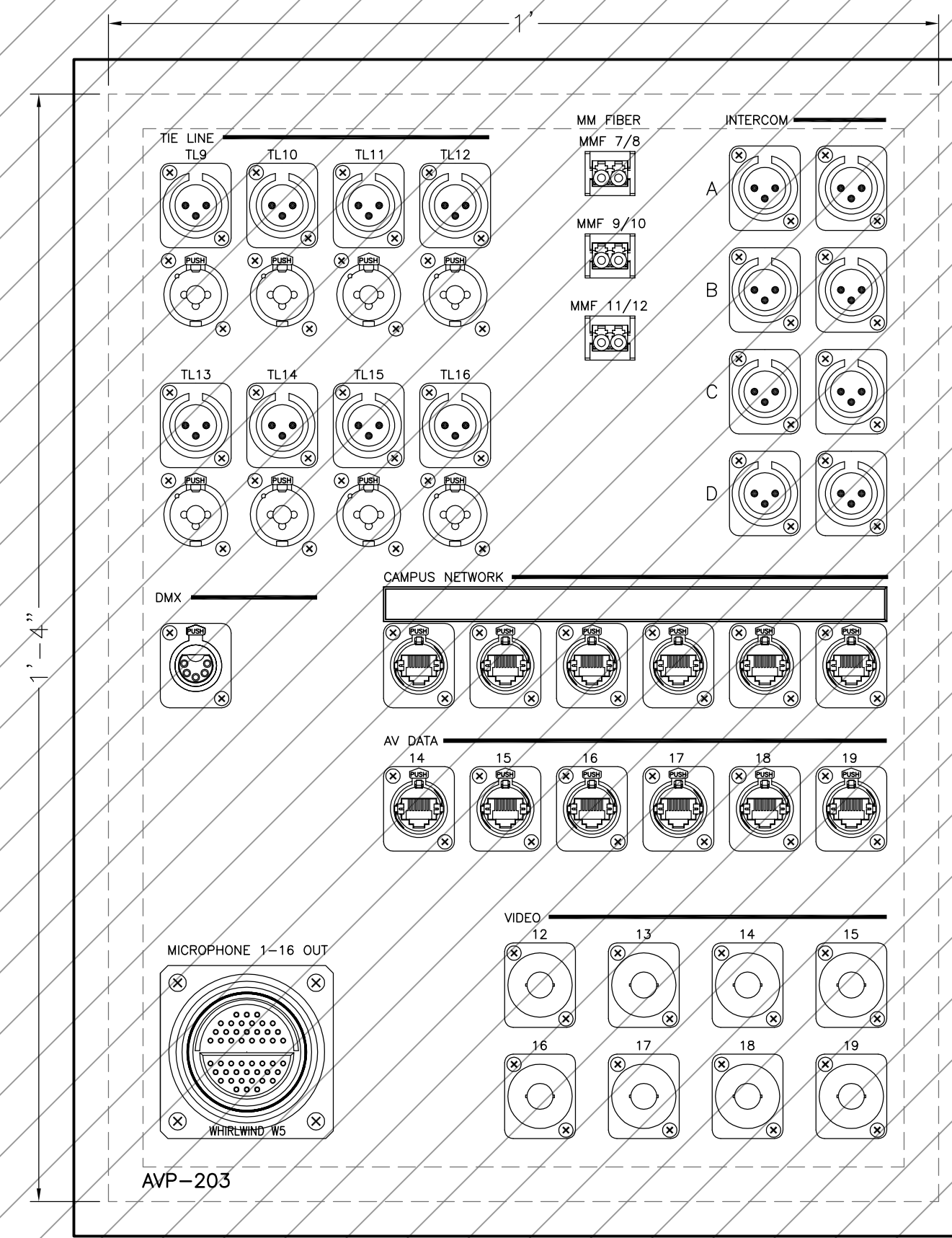
LAMICOID LABEL FOR  
CAMPUS LAN CIRCUIT  
NUMBERS BY I.T.  
CONTRACTOR (TYPICAL)



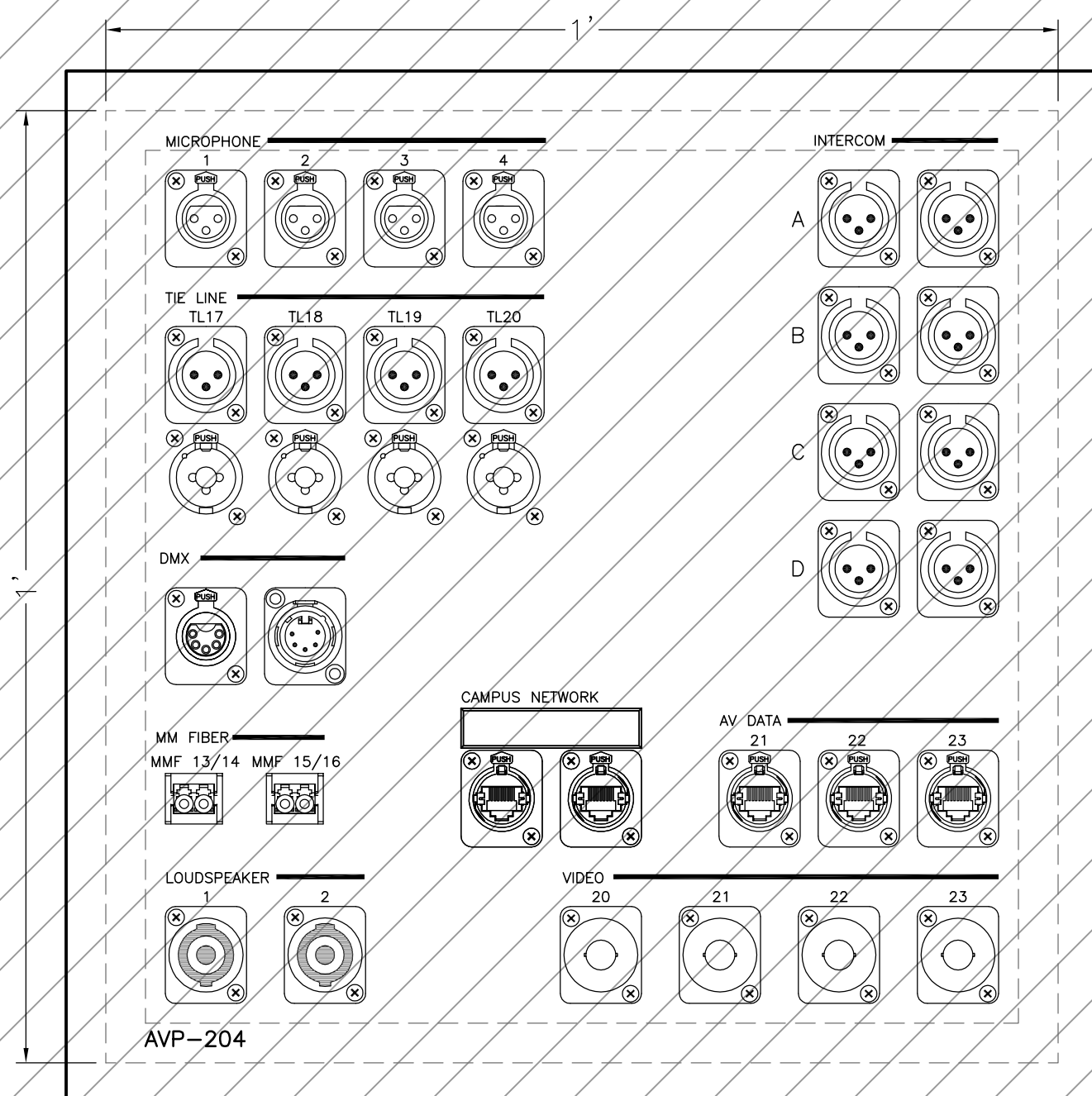
AVP-201 CONTROL ROOM  
FLUSH-MOUNT BOX BEHIND MONITORS



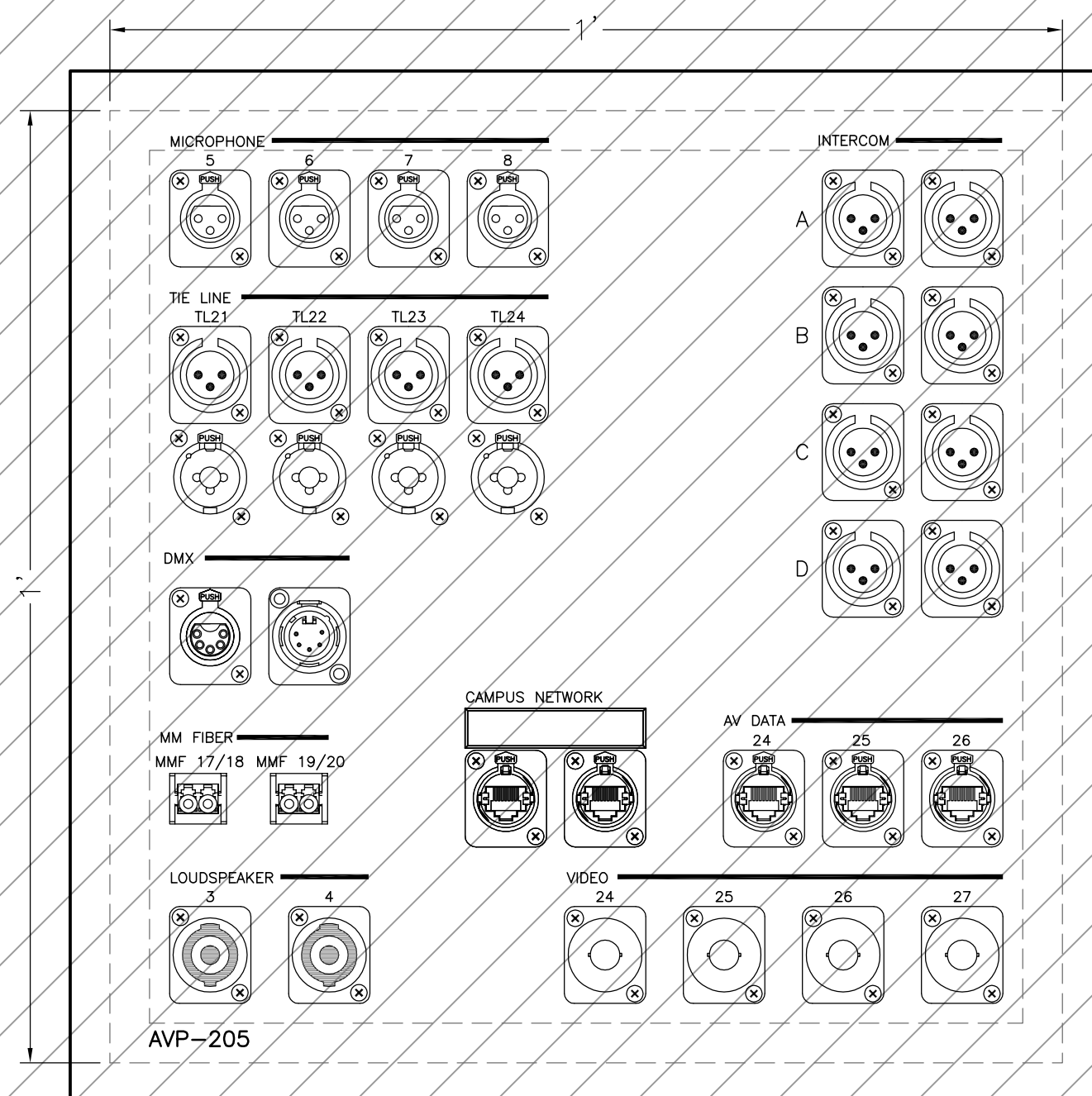
AVP-202 CONTROL ROOM, SERVES FRONT ROW  
FLUSH-MOUNT BOX



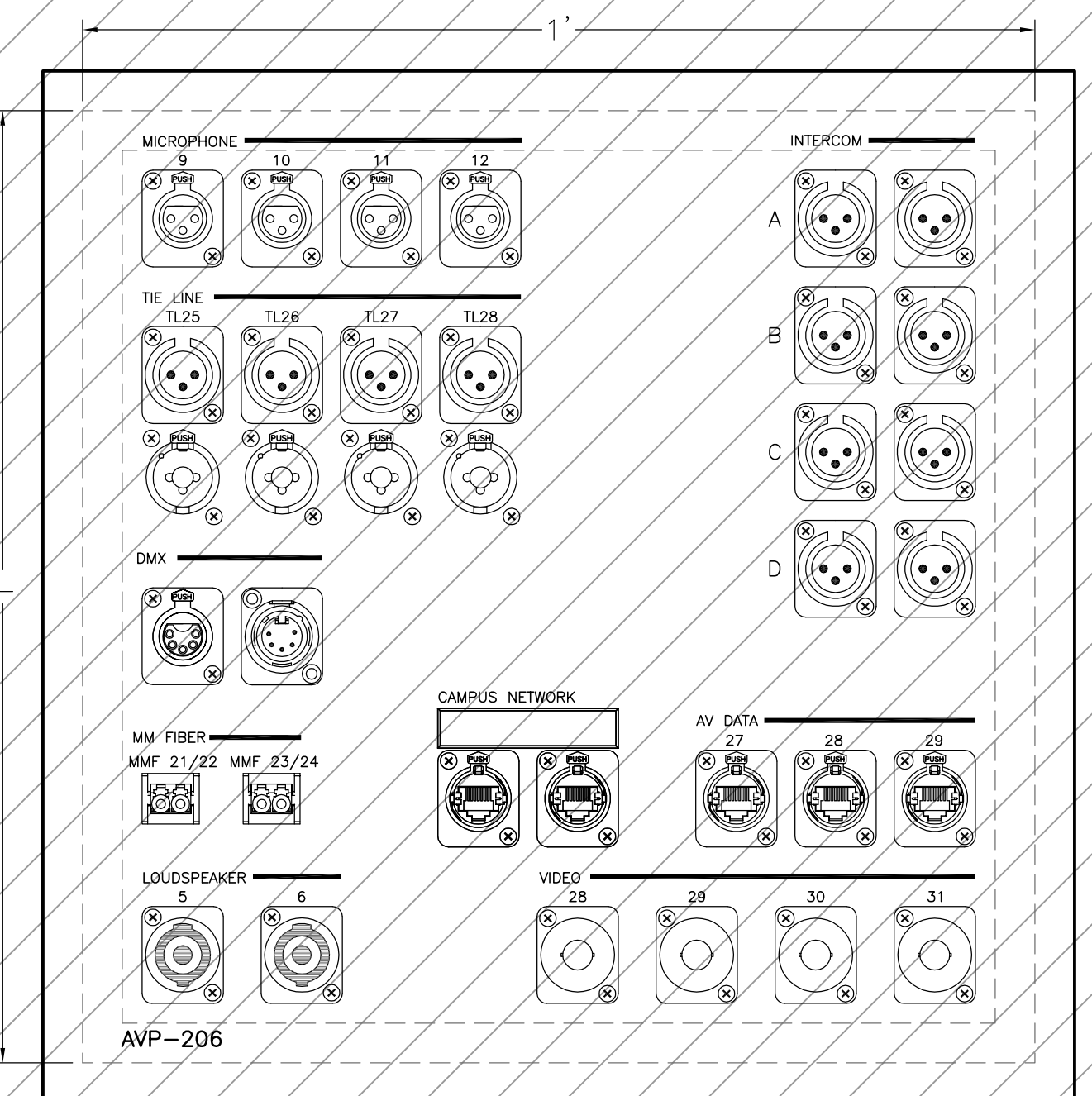
AVP-203 CONTROL ROOM, SERVES BACK ROW  
FLUSH-MOUNT BOX



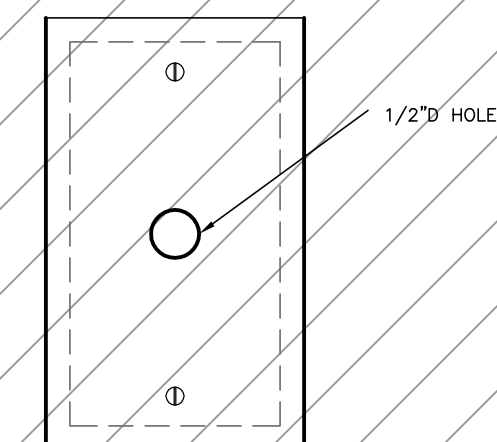
AVP-204 TV STUDIO  
FLUSH-MOUNT BOX



AVP-205 TV STUDIO  
FLUSH-MOUNT BOX



AVP-206 TV STUDIO  
FLUSH-MOUNT BOX

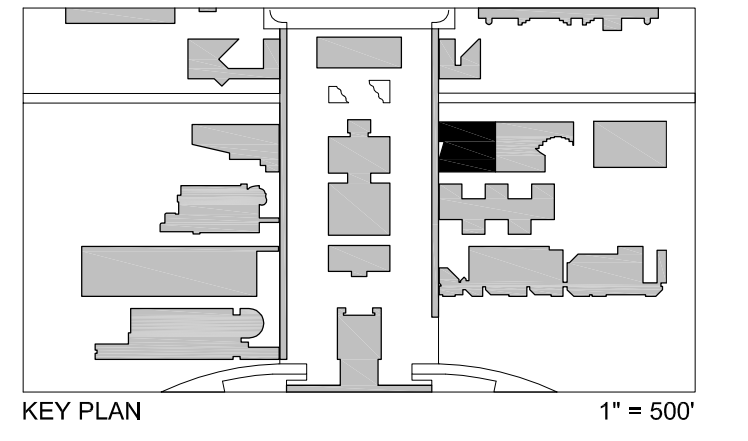


JBS-8 (TYP. OF 2)  
1-Gang;  
Flush-Mount Box

**GROUP III 6/14/2014 AV SYSTEMS AND  
EXTENDED INFRASTRUCTURE  
ISSUED FOR BID**

**BUL. #56 11/22/2013 BULLETIN #56  
(WITH RESPECT TO AV, EA AND EAP  
DRAWINGS, INCLUDES "DELTA 1"  
CHANGES)**

**11/1/2013 AV CHANGES PER SUNY  
PURCHASE REQUIREMENTS AND  
DESIGN DEVELOPMENT**



KEY PLAN 1" = 50'

BID DOCUMENTS

**AV PANEL ELEVATIONS -  
TV STUDIO/CONTROL ROOM**  
Scale: 6" = 1'-0"

3 OCTOBER 2011  
**SUCF Project No. 29401  
Humanities Building Renovation  
SUNY Purchase College**  
735 Anderson Hill Road, Purchase, New York 10577

**Kilment Halsband Architects**  
322 Eighth Avenue, New York, NY 10001  
**Robert Silman Associates, PC**  
88 University Place, New York, NY 10003

**Lakhani & Jordan Engineers**  
315 Madison Avenue Suite 1001, New York, NY 10017  
**CHA**  
111 Winners Circle, Albany, NY 12205

**Mathews Nielsen Landscape  
Architects, PC**  
120 Broadway Suite 1040, New York, NY 10271

**Tillostson Design Associates**  
40 Worth Street Suite 1680, New York, NY 10013  
**Sustainable Performance  
Consulting, PC**  
Webster Woods 1206 907 Ridge Road, Webster, NY 14580

**TM Technology Partners, Inc.**  
250 West 39th Street 9th FL, New York, NY, 10018

**Kirkegaard Associates**  
801 West Adams Street, Chicago, IL, 60607  
**Adelaide Environmental Health  
Associates, Inc.**  
1511 Route 22 Suite C24 Brewster, NY, 10509

**Argus Architecture & Preservation, P.C.**  
297 River Street Suite 303, Troy, NY 12180

**AV321**