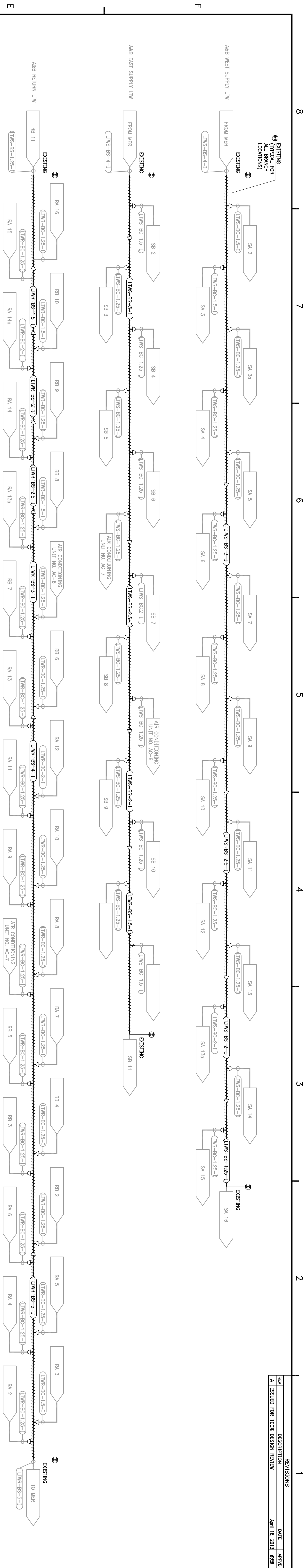


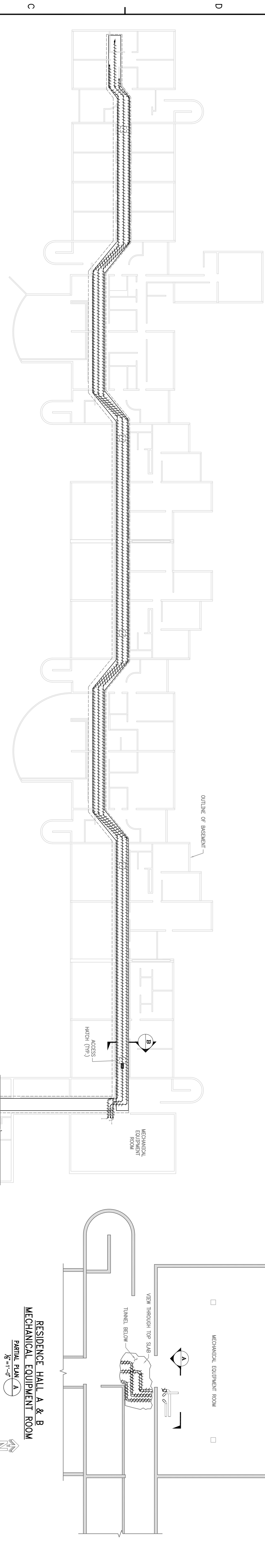


REVISIONS		
REV	DESCRIPTION	DATE
A	ISSUED FOR 100% DESIGN REVIEW	April 16, 2013

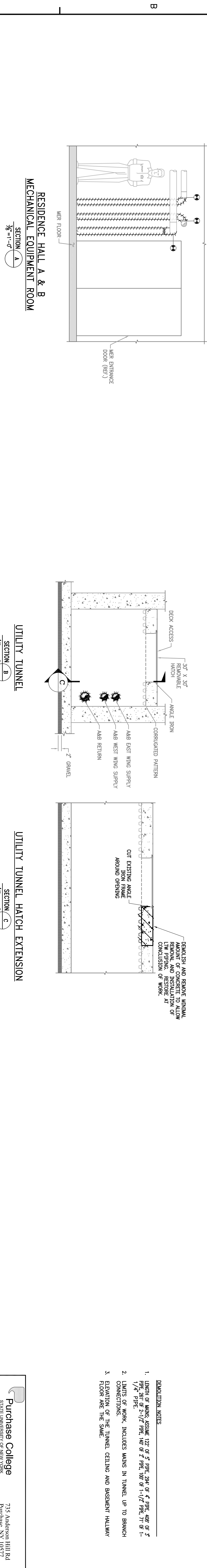
APPROVED	DATE
WJW	4/16/2013



LTW SYSTEM  
FLOW DIAGRAM



RESIDENCE HALLS A & B/UTILITY TUNNEL  
PLAN  
1/8"=1'-0"



UTILITY TUNNEL  
SECTION A  
1/8"=1'-0"

UTILITY TUNNEL HATCH EXTENSION  
SECTION B  
1/8"=1'-0"

- DEMOLITION NOTES:
1. LENGTH OF MAINS ASSUME 120' OF 5" PPE, 24" OF 4" PPE, 48" OF 3" PPE, 20' OF 2-1/2" PPE, 140' OF 2" PPE, 100' OF 1-1/2" PPE, 71' OF 1-1/4" PPE.
  2. LIMITS OF WORK INCLUDE MAINS IN TUNNEL UP TO BRANCH CONNECTIONS.
  3. ELEVATION OF THE TUNNEL CEILING AND BASEMENT HALLWAY FLOOR ARE THE SAME.

Purchase College		735 Anderson Hill Rd
STATE UNIVERSITY OF NEW YORK		Purchase, NY 10577
SCHUYLER ENGINEERING, P.C.		
RESIDENCE HALLS ZONES A & B, E & F REPLACE LTW PIPING		

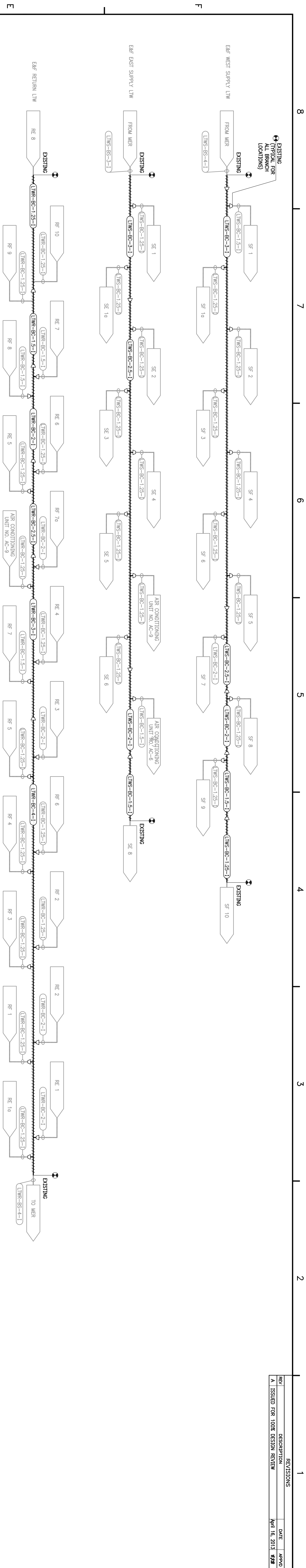
LOW TEMPERATURE WATER DEMOLITION  
ZONES A & B

SCALE	PROJECT	DESIGN NUMBER	REVISION
As Noted	RB	0843	M-1
DATE	DATE	DATE	DATE
6/3/2013	April 16, 2013		A

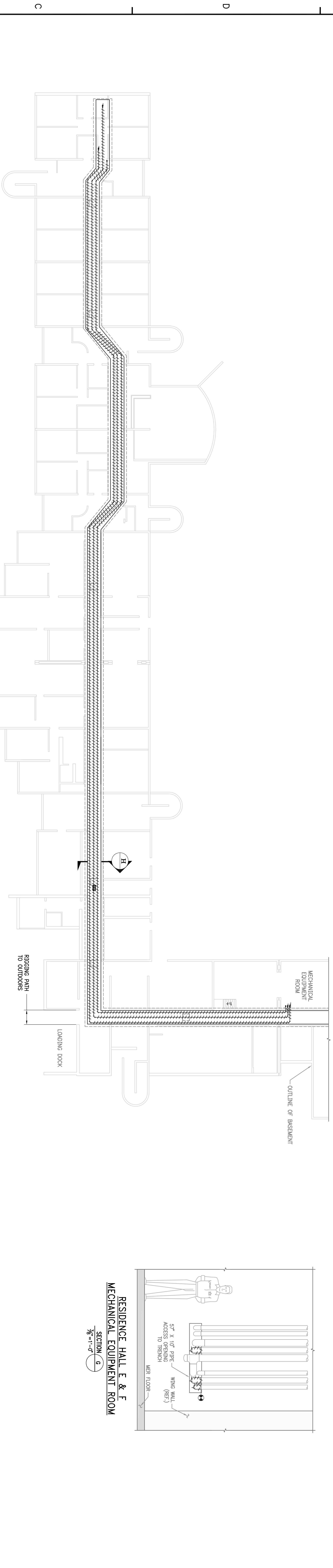




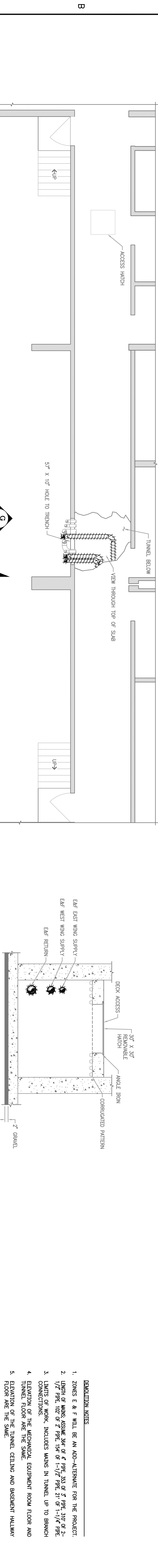
REVISIONS			DATE	APPROVED
REV	DESCRIPTION			
A	ISSUED FOR 100% DESIGN REVIEW		April 16, 2013	WJS



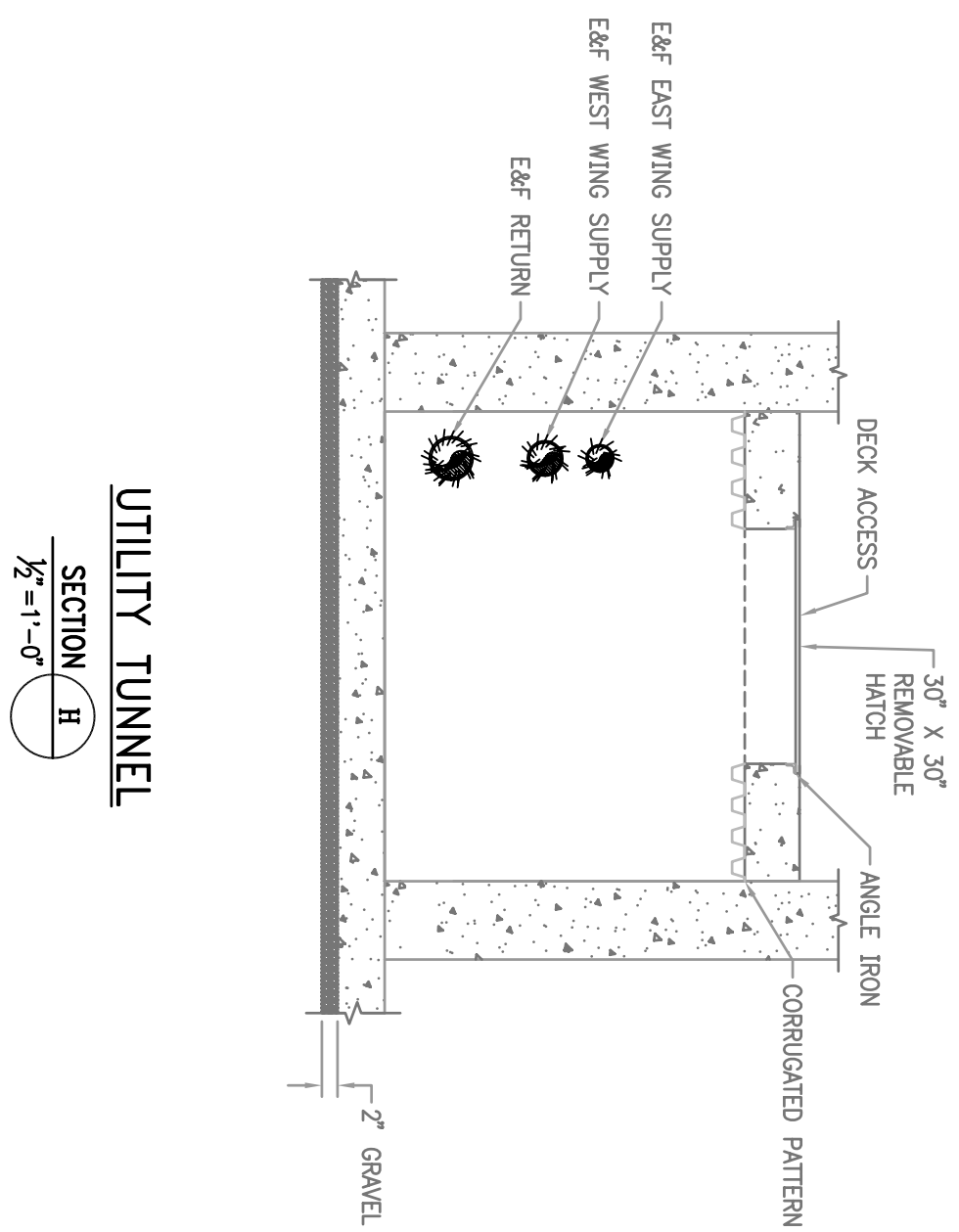
LTV SYSTEM  
FLOW DIAGRAM



RESIDENCE HALL E & F  
MECHANICAL EQUIPMENT ROOM  
SECTION G  
1/8"=1'-0"

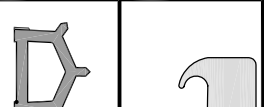


RESIDENCE HALLS E & F/UTILITY TUNNEL  
PLAN  
1/8"=1'-0"



UTILITY TUNNEL  
SECTION B  
1/2"=1'-0"

- DEMOLITION NOTES:
1. ZONES E & F WILL BE AN AD-ALTERNATE FOR THE PROJECT.
  2. LENGTH OF WINGS ASSUME 304' OF F PIPE, 353.5' OF F PIPE, 307' OF 2-1/2" PIPE, 102' OF 2" PIPE, 154' OF 1-1/2" PIPE, 21' OF 1-1/4" PIPE CONNECTIONS.
  3. LIMITS OF WORK, INCLUDES WINGS IN TUNNEL UP TO BRANCH CONNECTIONS.
  4. ELEVATION OF THE MECHANICAL EQUIPMENT ROOM FLOOR AND TUNNEL FLOOR ARE THE SAME.
  5. ELEVATION OF THE TUNNEL CEILING AND BASEMENT HALLWAY FLOOR ARE THE SAME.




Purchase College

STATE UNIVERSITY OF NEW YORK

735 Anderson Hill Rd

Purchase, NY 10577



SCHUYLER ENGINEERING, P.C.

RESIDENCE HALLS ZONES A & B, E & F REPLACE LTV PIPING

LOW TEMPERATURE WATER DEMOLITION  
ZONES E & F

SCALE	PROJECT	DRAWING NUMBER	REVISION
AS NOTED	0843	AL-1	A
DATE	APRIL 16, 2013		

