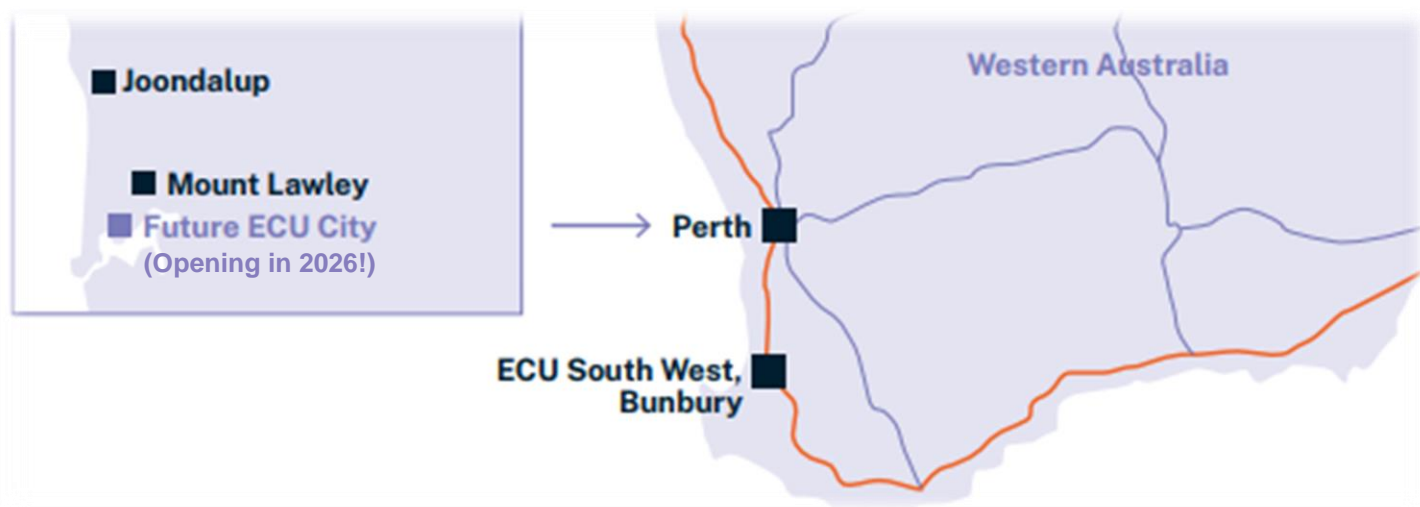


# Edith Cowan University

## Long-term Accommodation Guide

### Perth, Western Australia

*\*Please note, this document is a guide only – we recommend conducting your own research before finalising a booking.*



The above map demonstrates where ECU campuses are located in Western Australia.

**ECU Mount Lawley Campus** is a 20-minute bus ride from Perth City.

- If studying at our Mount Lawley Campus, we would suggest accommodation in Mount Lawley or Perth City / Central.

**ECU Joondalup Campus** is a 30-minute direct train ride from Perth City.

- If studying at our Joondalup Campus, we would suggest accommodation in Joondalup or Perth City / Central.

**ECU Bunbury Campus** is a 2-hour car drive from Perth city with no direct public transport links.

- If studying at our Bunbury Campus, we would suggest accommodation in Bunbury / Perth Southwest.

*\*Rates are indicative and correct at time of publish. Rates are subject to change and may vary depending upon season and availability.*

## Contents

Perth Central / City	Page 3
Perth North / Joondalup	Page 5
Perth Southwest / Bunbury	Page 7
Other Resources	Page 8

## Perth Central / City

### **ECU Village Mount Lawley** (Mount Lawley) - **Waitlist only**

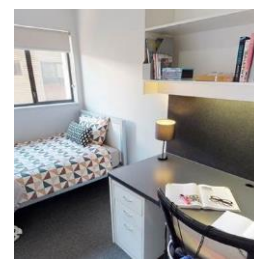
Looking for semester length accommodation near ECU Mount Lawley? The all-inclusive ECU Village Mount Lawley is the place for you. Please note, ECU Mount Lawley is currently at capacity, and you will be placed on a waitlist.

Website: <https://campuslivingvillages.com/australia/perth/ecu-village-mount-lawley/>

Indicative rates\*:

- Twin share apartment: from \$288pp per week\*\*
- Private studio room: from \$295pp per week\*\*

\*\*based on one semester duration



### **Beatty Lodge** (West Perth)

Beatty Lodge provides quality accommodation for international and domestic students including schools, sports and community groups. Centrally located just 3km (10 mins via bus) from Perth city and 3km (20 mins via bus) to ECU Mount Lawley Campus, Beatty Lodge is ideal for students studying at Mount Lawley or in the city. Stay a week, a semester or even a year with a range of budget conscious rooms that are available for short and long-term stays.

Website: <https://beattylodge.com.au/>

Indicative rates\*:

- Four-person shared dorm: from \$250pp per week.
- Twin share: from \$300pp per week.



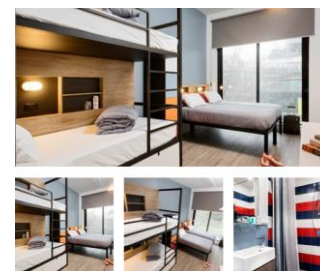
### **Hostel G** (Northbridge)

In the heart of Perth's CBD, Hostel G is a trendy hostel that blends art, design, cuisine and community, bringing you next level Perth accommodation that's as comfortable and cool as it is affordable and accessible. There are a number of rooms options to choose from to suit your needs and duration.

Website: <https://www.hostelgperth.com/>

Indicative rates\*:

- Four-person shared dorm: from \$62 per bed/per night
- Twin share: from \$160 per room/per night.



### **Yugo student accommodation (Northbridge)**

*In the heart of Perth's CBD, Yugo student housing is more than just a place to live and learn. It's a holistic living experience with spaces across the Globe, Yugo give students a supportive place to grow, on and off campus.*

Website: <https://yugo.com/en-gb/global/australia/perth/perth-city>

Indicative rates\*:

- Five-person shared apartment: from \$459pp per week



### **Campus Perth (Northbridge)**

*Student specific accommodation in the heart of downtown Perth. Stay in your own sweet space complete with cool decor, the hottest technology and fresh furniture. Along with your own room, you can also choose to have your own bathroom. You'll also have access to the shared facilities, complete with a study space, theatre, community garden, gym, rooftop, communal kitchens, yoga studio and gaming station.*

Website: <https://www.campusperth.com/#about-us>

Indicative rates\*:

- Double/twin studio: from \$392pp\*\* per week
- Four-person shared rooms: from \$280pp\*\* per week

\*\* Discount Available for stays longer than 13 weeks



### **QUEST Luxury Apartments – (West Perth)**

*Located in West Perth, Quest on Rheola offers the best of Perth's CBD as well as the city's notable natural surroundings. Quest on Rheola contains 20 serviced apartments, including 1- and 2-bedroom accommodation.*

Website: [www.questonrheola.com.au](http://www.questonrheola.com.au)

Indicative rates\*:

- Two-bedroom apartment based on triple share: from \$338 per room/per night



## Perth North / Joondalup

### **ECU Village Joondalup (Joondalup)** – Waitlist only

*Embrace on-campus life at ECU Village Joondalup. Explore affordable all-inclusive Joondalup student semester length accommodation options. Please note, ECU Joondalup is currently at capacity, and you will be placed on a long waitlist.*

Website: <https://campuslivingvillages.com/australia/perth/ecu-village-joondalup/>

Indicative rates\*:

- Four-person shared apartment: from \$266pp per week\*\*
- Private studio room: from \$392pp per week\*\*

*\*\*based on one semester duration*



### **Joondalup Guest House (Joondalup)** – Ideal for shorter stays

*Conveniently located close to ECU Joondalup campus and local attractions and amenities, the Joondalup Guest House is an ideal budget option. With basic shared catering amenities such as fridge, kettle, toaster and microwave.*

Website: <https://www.booking.com/hotel/au/joondalup-guest-house.en-gb.html>

Indicative rates\*:

- Twin share room (shared bathroom): from \$207 per room/per night or \$1,064 per room/per week



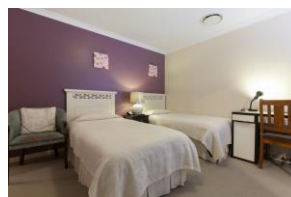
### **Arcadian Bed & Breakfast (Warwick, near Joondalup)**

*Built in 2011, Arcadian Bed & Breakfast offers motel-style B&B accommodation with private entrances. Each room includes an ensuite toilet and shower, flat-screen TV, a DVD player, a refrigerator, a toaster, a microwave and tea/coffee making facilities. Situated directly next to Warwick train station on a direct line centrally located between Joondalup and Perth city (25 mins either way by train).*

Website: <https://www.facebook.com/arcadianbb/>

Indicative rates\*:

- Twin share room: from \$164 per room/per night Or \$1,080 per room/per week



**QUEST Apartments Joondalup (Joondalup)**

a 12-minute walk to the train station and major shopping centre and plenty of local parks just minutes away, Quest Joondalup has all you need to live like a local. ECU Joondalup is just a 15-minute walk away or a 5-minute bus ride. All room types have self-catering facilities and apartments boasting a full kitchen.

Website: <https://www.questapartments.com.au/properties/wa/joondalup/quest-joondalup>

Indicative rates\*:

- Studio room with kitchenette (twin-share): from \$230per night
- One bedroom apartment (max 2 people): from \$280 per night
- Two-bedroom apartment (max 4 people): from \$490per night

*(Discount may apply for group and long-term bookings)*





## Perth Southwest / Bunbury

### ECU Village Bunbury (Bunbury) - Waitlist only

Looking for semester length accommodation on campus? Discover the freedom and support on offer at ECU Village Bunbury. It's the best of both world with all-inclusive rooms, on campus experiences and 24/7 support.

Website: <https://campuslivingvillages.com/australia/perth/ecu-village-bunbury/>

Indicative rates\*:

- One bedroom apartment: from \$274pp per week\*\*
- Six bedroom / Three bathroom apartment: from \$227pp per week\*\*

\*\*based on one semester duration



### Bunbury Hotel

Offering modern studio rooms to suit singles, couples, families, and groups. All rooms are equipped with modern conveniences including air conditioning. Rooms include daily buffet breakfast and are well equipped with cooking facilities for added convenience.

Website:

<https://www.bunburyhotelkoombanabay.com.au/rooms/>

Indicative rates\*:

- Twin-share room: from \$220 per room/per night



### Bunbury Seaview Apartments

Bunbury Seaview Apartments is brand new Bunbury accommodation designed with the perfect holiday in mind. With self-catering facilities to suit your every need.

Website: <https://www.bunburyseaview.com.au/>

Indicative rates\*:

- One Bedroom Apartment with limited/no view **Queen bed only**: ECU rate from \$265 per night (normally \$295 per night)
- One Bedroom Apartments ground floor. **Twin Rooms** available: ECU rate from \$265 per night (normally \$295 per night)
- Larger Two / Three bedroom size apartments available.



## Other Resources

### **ECU Accommodation listings:**

Edith Cowan University (ECU) Accommodation Listings platform connects students with housing providers and housemates to assist students to secure housing.

This platform has been established for the exclusive use of ECU students as tenants. You can search for housing opportunities or connect with other ECU students looking for housing.

[Visit the Accommodation Listings](#)

### **Student Accommodation listings:**

- [Student.com](#)
- [Study Perth](#)

### **Homestay Providers:**

You can live in a private home with a Western Australian family through Homestay providers. This is a unique way for students, studying in Australian education institutions, to find safe and comfortable accommodation at very affordable rates.

- [Australian Homestay Network](#)

### **House Sharing**

One affordable approach to securing accommodation is to share with other people. Living in a share house can be a great way to save rent, make new friends, learn to cook and more.

- [ECU Accommodation Listings](#)
- [Flatmates.com.au](#)
- [Share Abode](#)
- [Sharehouse](#)
- [The Room Xchange](#)
- [Gumtree](#)

**Warning to students:** We suggest you do not pay an accommodation provider before you have seen the accommodation in person. Be aware of scams and unethical behaviour. Ensure you sign an agreement or contract before moving into a share house.

You might also want to check out our [Tip Sheet](#) on Living in Shared Accommodation.