	<b>ACT: ONE</b>	<b>SCENE: 1</b>
	<b>PAGE(S): 1</b>	
	<b>COSTUME NOTES: N/A</b>	
	<b>PROP NOTES: N/A</b>	
	<b>EXTRA NOTES:</b> Ent. cued by Kylie	

*SUBJECT TO CHANGE*

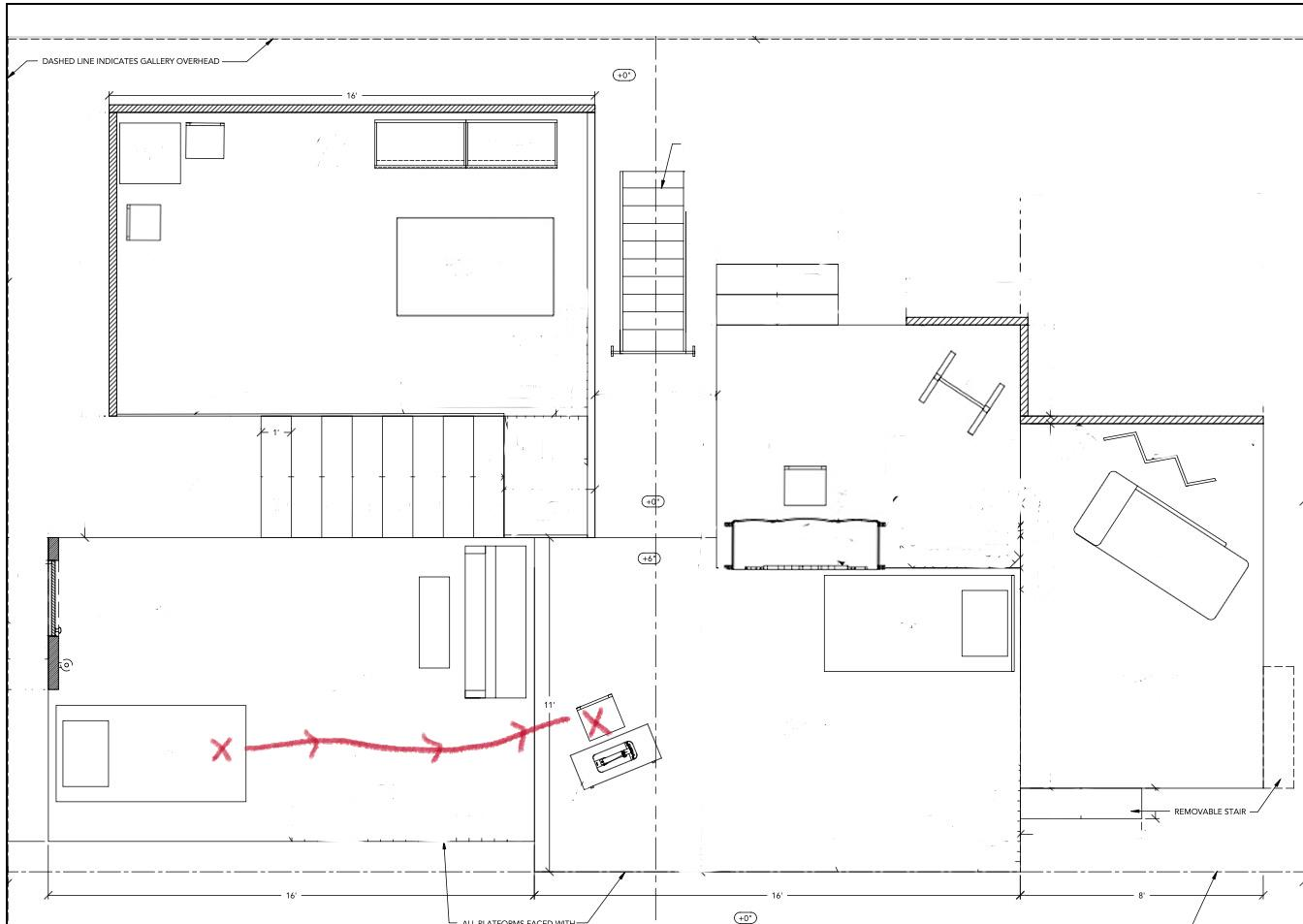
<p>DASHED LINE INDICATES GALLERY OVERHEAD</p> <p>18'</p> <p>10'</p> <p>11'</p> <p>16'</p> <p>16'</p> <p>8'</p> <p>REMOVABLE STAIR</p> <p>ALL PLATFORMS FACED UNTIL</p>	<b>ACT: ONE</b>	<b>SCENE: 1-2</b>
	<b>PAGE(S): 4-5</b>	
	<p><b>COSTUME NOTES:</b> Add <i>apron</i> - preset on sewing table by SM (TIE IN FRONT)</p>	
<p><b>EXTRA NOTES:</b></p>	<p><b>PROP NOTES:</b> EXIT WITH <i>sewing basket</i> &amp; <i>carpetbag</i> SET <i>Letter #1</i> - in apron pocket SET <i>carpetbag</i> - SL of Van Buren vanity SET <i>sewing basket</i> - top right of Van Buren vanity</p>	

SUBJECT TO CHANGE

	<p><b>ACT: ONE</b></p>	<p><b>SCENE: 2-3</b></p>
<p><b>EXTRA NOTES:</b></p>	<p><b>PAGE(S): 9-10</b></p>	
	<p><b>COSTUME NOTES:</b> Wardrobe will Remove <i>apron</i> &amp; Add <i>shawl</i></p>	
	<p><b>PROP NOTES:</b> EXIT WITH <i>carpetbag</i> &amp; <i>sewing basket</i> HAND-OFF <i>carpetbag</i> &amp; <i>sewing basket</i> to Morgan SR RECEIVE <i>purse</i> from Morgan SR</p>	

SUBJECT TO CHANGE

*SUBJECT TO CHANGE*

	<b>ACT: ONE</b>	<b>SCENE: 4-5</b>
	<b>PAGE(S): 19-20</b>	
	<b>COSTUME NOTES:</b> N/A	
	<b>PROP NOTES:</b> EXIT WITH <i>carpetbag</i> & <i>sewing basket</i> SET <i>carpetbag</i> - coat rack SET <i>sewing basket</i> - sewing machine lid	
	<b>EXTRA NOTES:</b>	

SUBJECT TO CHANGE

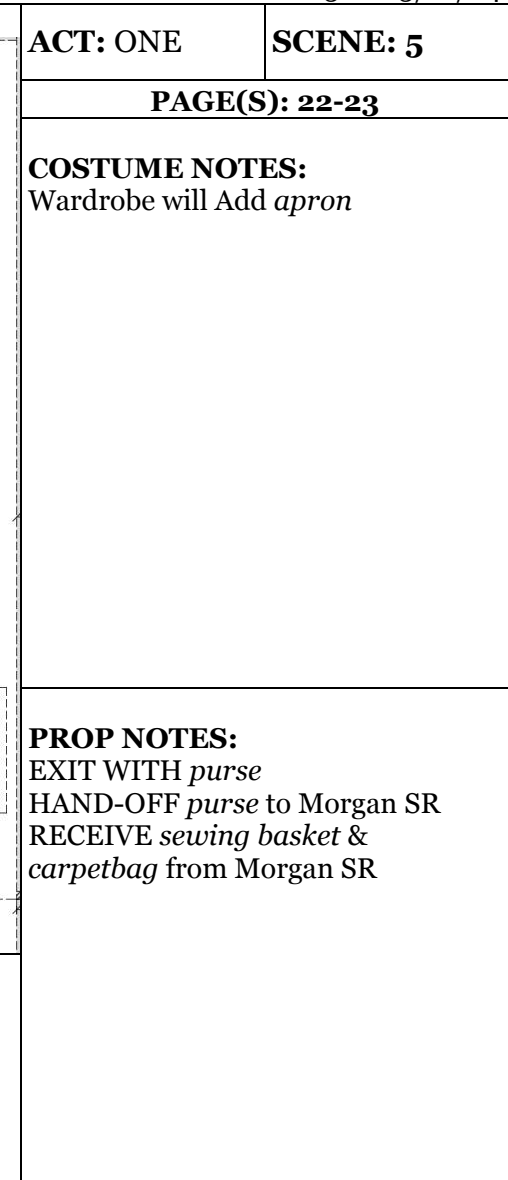


**PAGE(S): 21**

N/A

EXIT WITH *sewing basket, carpetbag, & pieces of letter*  
HAND-OFF *sewing basket & carpetbag* to Morgan SR  
RECEIVE *purse* from Morgan SR

*SUBJECT TO CHANGE*



*SUBJECT TO CHANGE*

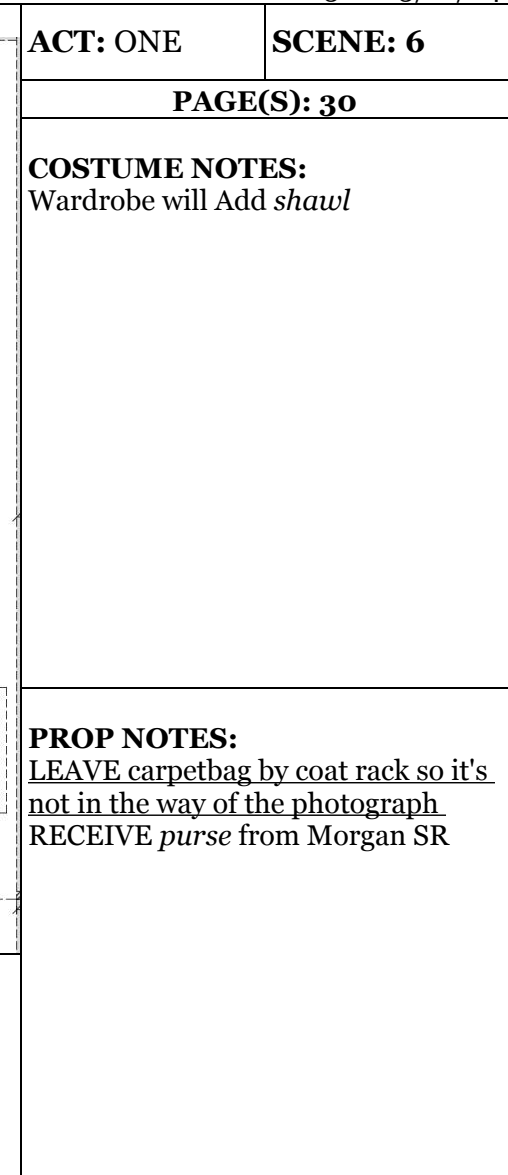
	<b>ACT: ONE</b>	<b>SCENE: 5-6</b>
	<b>PAGE(S): 25-26</b>	
	<b>COSTUME NOTES:</b> Remove <i>apron</i> - leave on sewing table	
<b>EXTRA NOTES:</b>	<b>PROP NOTES:</b> EXIT WITH <i>sewing basket</i> & <i>carpetbag</i> SET <i>sewing basket</i> - <u>sewing table with apron</u> SET <i>carpetbag</i> - US of Mayme bed post <i>Letter #5</i> will be preset in <i>carpetbag</i>	

SUBJECT TO CHANGE

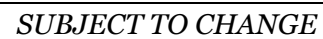


<p>DASHED LINE INDICATES GALLERY OVERHEAD</p> <p>16'</p> <p>10'</p> <p>11'</p> <p>16'</p> <p>8'</p> <p>REMOVABLE STAIR</p> <p>ALL PLATFORMS FACED UNTIL</p>	<b>ACT: ONE</b>	<b>SCENE: 6</b>
	<b>PAGE(S): 28</b>	
	<b>COSTUME NOTES:</b> N/A	
<p><b>EXTRA NOTES:</b></p>	<p><b>PROP NOTES:</b>  EXIT WITH carpetbag  SET carpetbag - coat rack  GRAB <i>materials bag</i> - coat rack  (pack fabric in)</p>	

SUBJECT TO CHANGE

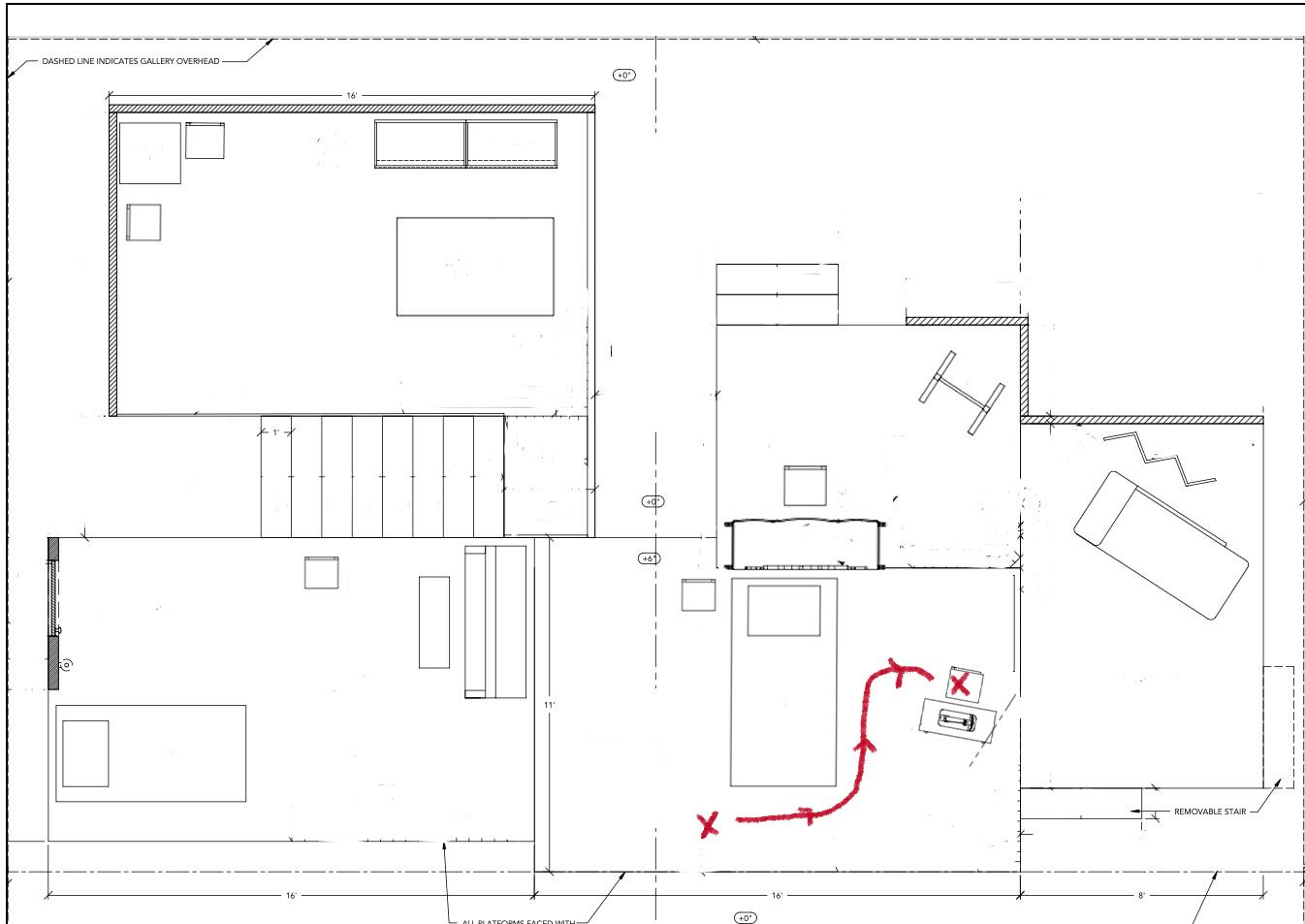


*SUBJECT TO CHANGE*



	<b>ACT: TWO</b>	<b>SCENE: 1</b>
	<b>PAGE(S): 33</b>	
	<b>COSTUME NOTES:</b> Add <i>Wedding Corset</i> and <i>Wedding Shoes</i> during intermission	
<b>EXTRA NOTES:</b> Top of Act entrance - Enter DSR (cued by Morgan)	<b>PROP NOTES:</b> N/A	

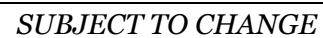
*SUBJECT TO CHANGE*

	<b>ACT: TWO</b>	<b>SCENE: 1-2</b>
	<b>PAGE(S): 35-36</b>	
	<b>COSTUME NOTES:</b> Change from <i>Wedding Dress</i> to <i>Act 2 Dress</i> onstage with help from Leanora and Em. Lace shoes before LX comes up on Scene 2	
<b>EXTRA NOTES:</b>	<b>PROP NOTES:</b> N/A	

SUBJECT TO CHANGE

	<p><b>ACT: TWO</b></p> <p><b>SCENE: 2</b></p>
<p><b>EXTRA NOTES:</b> Remember to walk behind black masking.</p>	<p><b>PAGE(S): 40</b></p> <p><b>COSTUME NOTES:</b> Wardrobe will Add <i>shawl</i></p> <p><b>PROP NOTES:</b> EXIT WITH <i>carpetbag</i> &amp; <b><i>Smoking Jacket</i></b> HAND-OFF <b><i>Smoking Jacket</i></b> &amp; <i>carpetbag</i> to Morgan RECEIVE <i>purse</i> from Morgan</p>

SUBJECT TO CHANGE

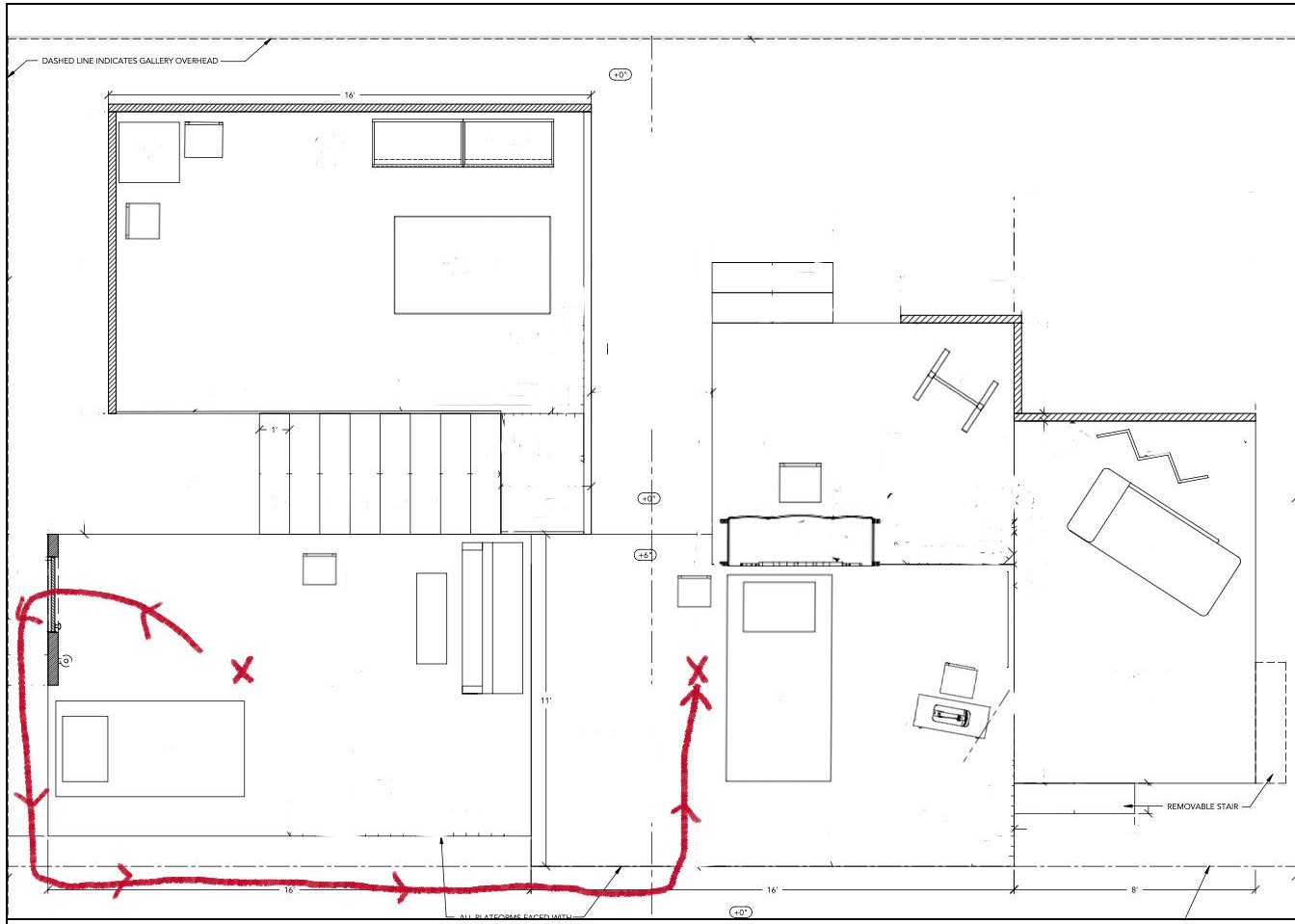


*SUBJECT TO CHANGE*

	<p><b>ACT: TWO</b></p>	<p><b>SCENE: 3-4</b></p>
	<p><b>PAGE(S): 44-45</b></p>	
	<p><b>COSTUME NOTES:</b> QUICK CHANGE to remove <i>Wedding Corset</i> &amp; <i>apron</i></p>	
<p><b>EXTRA NOTES:</b> Cued to ent. after Quick Change by Morgan</p>	<p><b>PROP NOTES:</b> EXIT WITH <i>purse</i> HAND-OFF <i>purse</i> to Morgan SR RECEIVE <i>carpetbag</i> from Morgan SR SET <i>carpetbag</i> - US of Mayme's bed</p>	

SUBJECT TO CHANGE

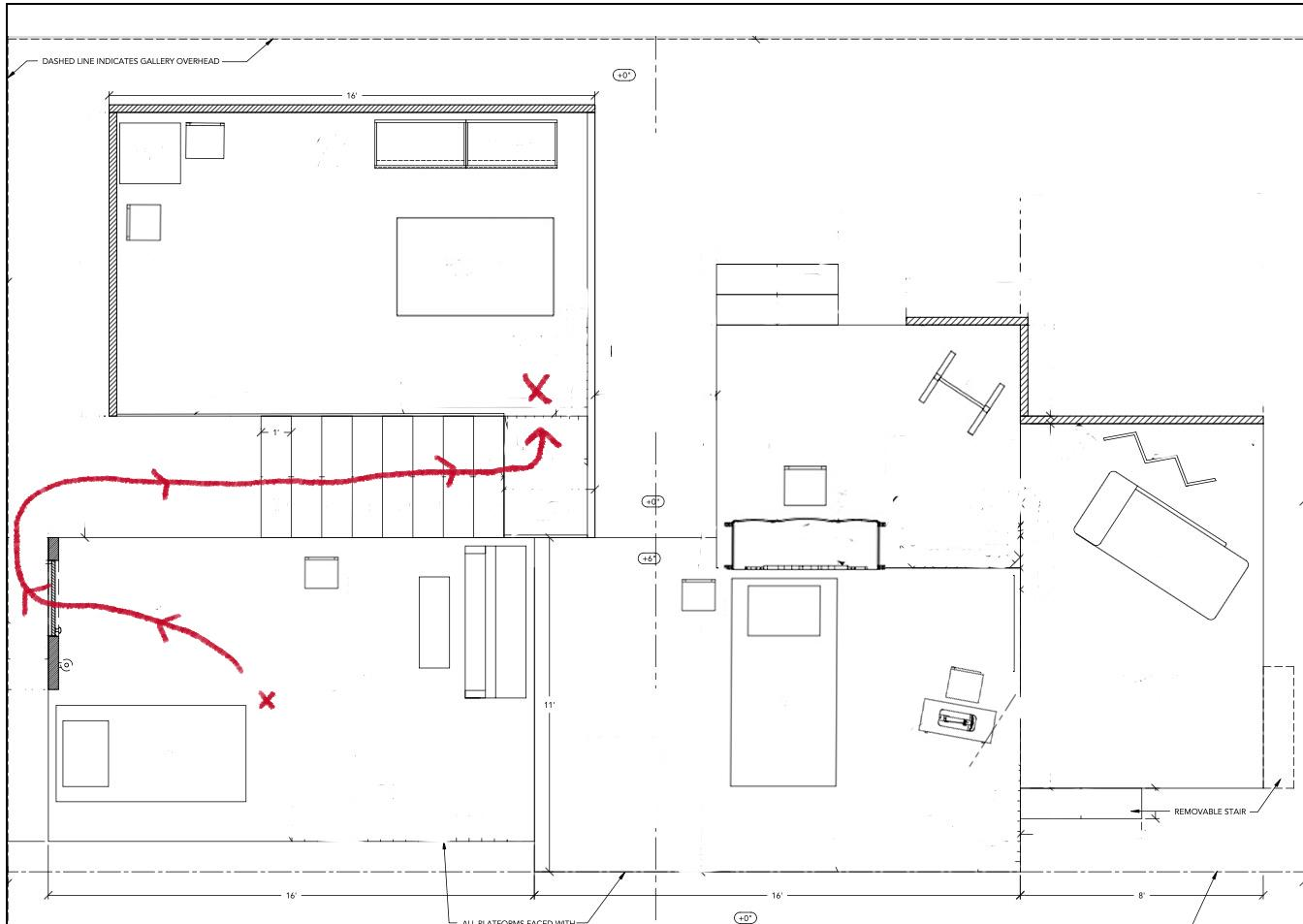


	<b>ACT: TWO</b>	<b>SCENE: 4</b>
	<b>PAGE(S): 47</b>	
	<b>COSTUME NOTES: N/A</b>	
	<b>PROP NOTES:</b> EXIT WITH <i>carpetbag</i> SET <i>carpetbag</i> - under sewing machine lid	
<b>EXTRA NOTES:</b>		

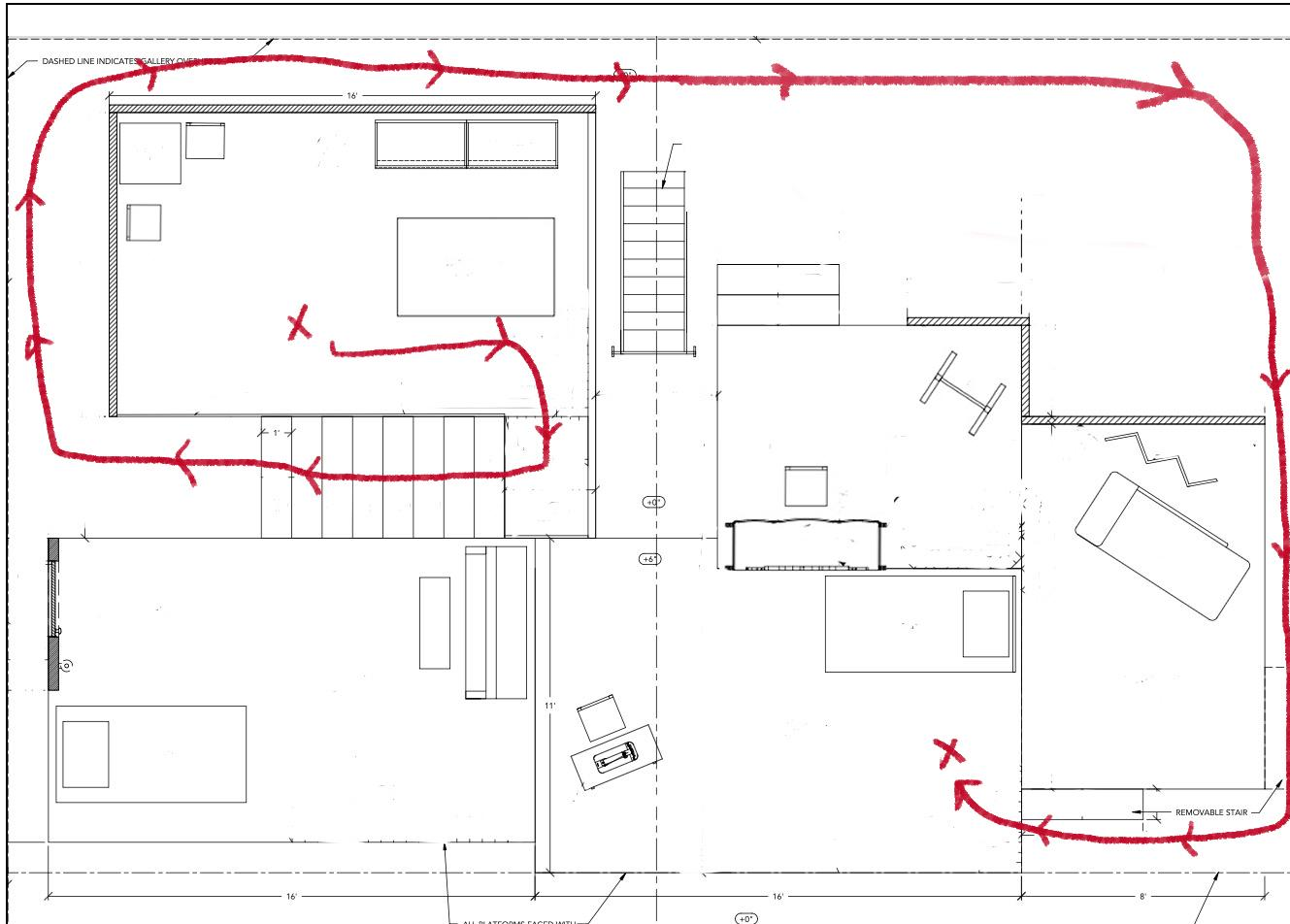
SUBJECT TO CHANGE

	<b>ACT: TWO</b>	<b>SCENE: 4-5</b>
	<b>PAGE(S): 51-52</b>	
	<p><b>COSTUME NOTES:</b> EXIT WITH <i>shirt off SR</i> to re-button before entrance Make sure to remove the flower!</p>	
<p><b>EXTRA NOTES:</b></p>	<p><b>PROP NOTES:</b> GRAB &amp; EXIT w/ <i>sewing basket</i> (scissors preset inside) GRAB <i>scissors</i> out of <i>sewing basket</i> OSR <u>SET scissors on top of Mayme side table during scene</u></p>	

SUBJECT TO CHANGE

	<b>ACT: TWO</b>	<b>SCENE: 5-6</b>
	<b>PAGE(S): 54-55</b>	
	<b>COSTUME NOTES:</b> Wardrobe will Add <i>shawl</i>	
	<b>PROP NOTES:</b> EXIT WITH <i>Smoking Jacket</i> RECEIVE <i>purse</i> from Morgan SR	
<b>EXTRA NOTES:</b>		

SUBJECT TO CHANGE



**ACT: TWO**

**SCENE: 6-7**

**PAGE(S): 56-57**

**COSTUME NOTES:**

Remove *shawl* & hand-off to Morgan

**PROP NOTES:**

EXIT w/ *purse*

HAND-OFF *purse* to Morgan SR

RECEIVE *carpetbag* from Kylie SL  
before ent.

**EXTRA NOTES:** Remember to walk behind black masking.

*SUBJECT TO CHANGE*