

GENERAL NOTES

- FOR CONTROL OF EMERGENCY L.T.G. SEE WIRING DIAGRAM DWG. "E-10"
- INDIVIDUAL SECONDARY FEEDS TO COLD CATHODE TRANSFORMERS (N.V.C. P.V.C. CONDUIT-REFER TO SPECIFICATIONS).
- ALL FLUORESCENT LIGHTING FIXTURES ON THIS DWG. SHALL BE TYPE "F-1" UNLESS OTHERWISE NOTED.
- COORDINATE LOCATION AND MOUNTING OF FIXTURE TYPE "F-1" WITH HORIZONTAL 3/4" X 3/4" STEEL MEMBER IN VESTIBULE CEILING.
- CONTROL UNIT SHALL BE CENTURY CAT # 31004 OR EQUAL. (SEE 3)
- CONTROL STATION SHALL HOUSE 1 POTENTIOMETER.
- WHERE GANGED SWITCHING IS INDICATED FOR 277 VOLT LIGHTING CIRCUITS, PROVIDE BARRIERS BETWEEN SWITCHES (PHASES) WHERE MORE THAN ONE PHASE LEG ENTERS BOX.
- FOR EXACT LOCATION OF LIGHT FIXTURES, REFER TO ARCHITECTURAL REFLECTED CEILING PLANS.
- TIE LIKE CIRCUITS TOGETHER AT PANEL.
- LIGHTING FIXTURES IN MECH. AREAS SHALL BE MOUNTED 10'-0" A.F.F. WHERE POSSIBLE. ELECTRICAL CONTRACTOR SHALL COORDINATE LOCATION OF FIXTURES WITH MECH. WORK AND SHALL MOUNT FIXTURES AFTER ALL MECH. WORK HAS BEEN INSTALLED. FIXTURES SHALL BE MOUNTED SO AS NOT TO INTERFERE WITH WORK OF OTHER TRADES, NOR BE RENDERED INACCESSIBLE OR INOPERABLE.
- SEE DRAWING E-14 FOR LIGHTING FIXTURE SCHEDULE.
- SEE THIS DWG. FOR DETAILS OF REMOTE BALLAST ENCL.

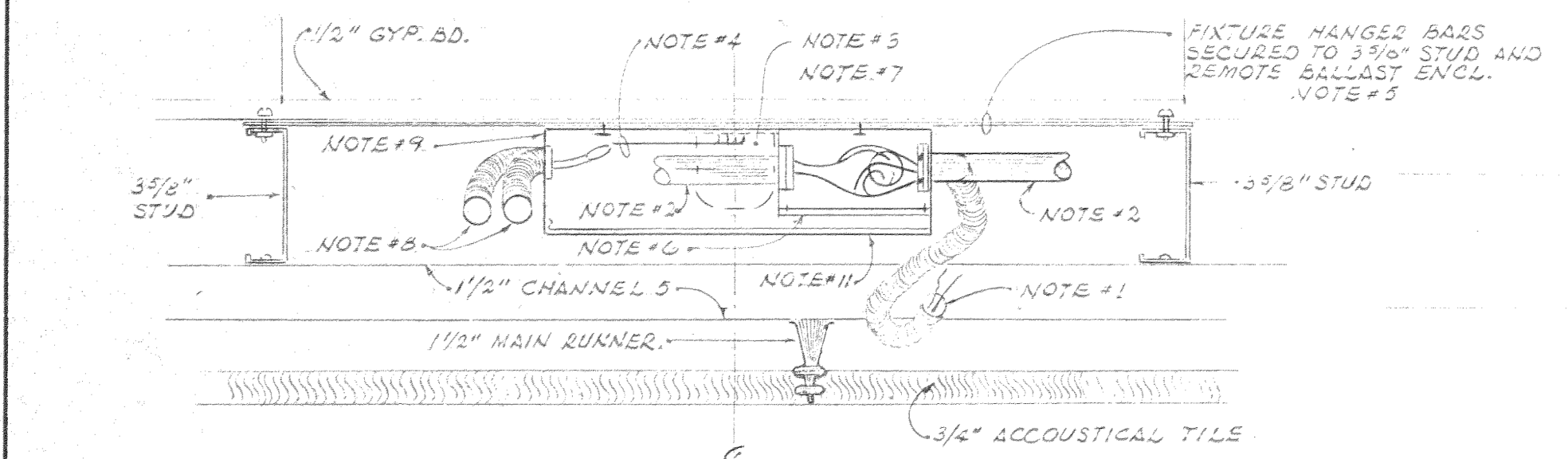
RECITAL HALL DIMMER SCHEDULE (RD)

LIGHTS CONTROLLED	QTY. NOS. CONTROLLED	DIMMER ASSY. NO. CENTURY CAT. NO.	DIMMER SIZE	CONTROLLED FROM (H=MASTER)	PRIMARY CB (MIN)	SECONDARY CB (MIN)	REMARKS
STAGE REAR WALL ELIPSOIDAL SPOTS	1, 2, 3	1	91304-10CB	4 KW (2) CS-2 (H)	35A	4-20A	
ELIPSOIDAL SPOTS	20, 21			4 KW (2) CS-2 (H)	35A	3-20A	
HOUSE L.T.G.	6, 7, 8, 9	2	91306-15CB	6 KW (2) CS-2 (H)	50A	5-20A	
	10, 11, 12, 13			6 KW (2) CS-2 (H)	50A	5-20A	
	14, 15, 16, 17			6 KW (2) CS-2 (H)	50A	5-20A	
STAGE DOWNLIGHTS	4, 5	3	91304-5CB	4 KW (2) CS-2 (H)	35A	3-20A	
ORGAN STUDIO	22, 23			4 KW (2) CS-2 (H)	35A	3-20A	
	24, 25			4 KW (2) CS-2 (H)	35A	3-20A	

COLLEGIUM MUSIC DIMMER SCHEDULE (CD)

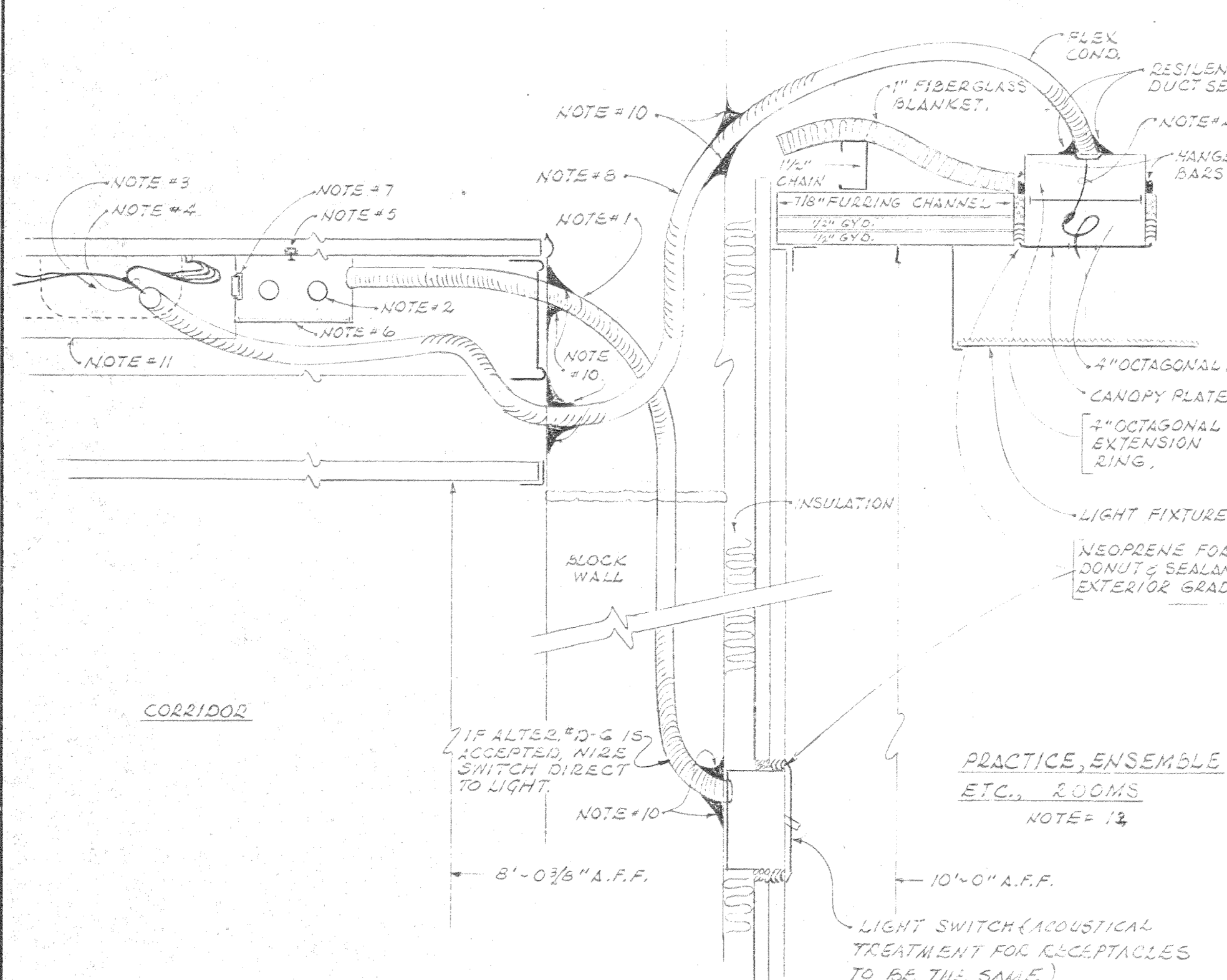
LIGHTS CONTROLLED	QTY. NOS. CONTROLLED	DIMMER ASSY. NO. CENTURY CAT. NO.	DIMMER SIZE	CONTROLLED FROM (H=MASTER)	PRIMARY CB (MIN)	SECONDARY CB (MIN)	REMARKS
COVE PLUG/OLD	1, 2, 3, 4	1	91306-17CB	6 KW CS-3 (H)	50A	5-20A	
CLC, CASE LIGHTS	5, 6, 7, 8, 9, 10			6 KW CS-3 (H)	50A	6-20A	
COLD CATHODE COVE	11, 12, 13, 14			6 KW CS-3 (H)	50A	6-20A	

FIXED REMOTE CONTROL STATION FOR "R-2" HOUSING & POTENTIOMETERS IN 3 GROUPS OF 2 AND UNIFIED VERTICALLY; 1 MASTER TO CONTROL ALL THREE GROUPS; 1 TRAIL CONTROLLER.



LONG SECTION THROUGH CORRIDOR

NO SCALE



CROSS SECTION THROUGH CORRIDOR

4 PRACTICE ENSEMBLE ETC.

TYPICAL REMOTE BALLAST DETAILS

NO SCALE



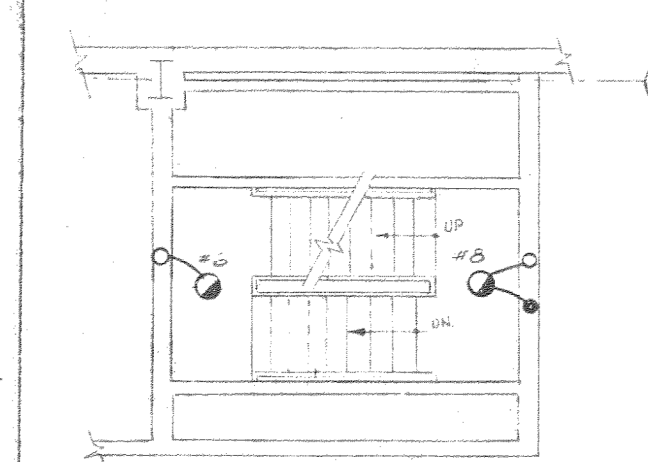
TYPICAL REMOTE BALLAST DETAILS/NOTES

- THW WIRE NO. 12 AWG MIN. IN FLEXIBLE CONDUIT FROM J.B. AT REMOTE BALLAST ENCLOSURE TO LIGHT SWITCH VIA BLOCK WALL.
- RIGID STEEL CONDUIT WITH THW WIRE NO. 12 AWG. MIN. POWER FEED TO J.B. AT REMOTE BALLAST ENCLOSURE.
- SUPER PREVIEW FLUORESCENT BALLAST (2LAMP) WITH COLOR CODED LFADS. MOUNTED IN REMOTE BALLAST ENCLOSURE.
- RHH (WITHOUT OUTER COVERING) WIRE NO. 14 AWG. MIN. COLOR CODED TO MATCH COLOR CODING OF BALLAST LEADS. SPLICE TO BALLAST LEADS (DETAIL SHOWS ONE TWO LAMP BALLAST-REPEAT AS REQUIRED PER CONDITION) AND RUN TO LIGHT FIXTURE AS SHOWN IN DETAIL.
- FIXTURE HANGER BARS TO STRADLE 1-5/8" CHANNELS. SECURE HANGER BARS TO CHANNELS, JUNCTION BOX, AND BALLAST ENCLOSURE IN AN APPROVED FASHION.
- 4" SQUARE X 2-1/8" DEEP STANDARD JUNCTION BOX KNOCK OUTS AS REQUIRED SUPPORT BY HANGER BARS AND NIPPLED TO REMOTE BALLAST ENCLOSURE.
- NIPPLE TO REMOTE BALLAST ENCLOSURE FROM JUNCTION BOX.

8. FLEXIBLE CONDUIT WITH COLOR CODED WIRES (NOTE 4) FROM REMOTE BALLAST ENCLOSURE VIA BLOCK WALL TO LIGHT FIXTURE.

9. REMOTE BALLAST ENCLOSURE 4'-0" X 6'-0" X 10-5/8" X 2-3/4" MODIFIED FIXTURE HOUSING WITH BOTTOM ACCESS.
10. WHERE FLEXIBLE CONDUIT PASSES THROUGH BLOCK WALL: FILL OPENING AFTER INSTALLATION OF FLEX CONDUIT WITH NOISE RETARDANT COMPOUND.
11. REMOTE BALLAST HOUSING ACCESS COVER.
12. GENERAL: COORDINATE LOCATION OF REMOTE BALLAST ENCLOSURE, J.B., FLEX CONDUITS, RIGID CONDUITS, ECT. WITH INCANDESCENT CORRIDOR LIGHT. REHEAT COIL ACCESS INTO AIR PLENUM AND ANY OTHER MECHANICAL OR ARCHITECTURAL STRUCTURE IN CORRIDOR CEILING.

STAIR #4 - PLAN



INTERMEDIATE LANDING

BETWEEN BASEMENT AND PLAZA

AND PLAZA

BALLAST HOUSING SCHEDULE

SUPPLIES	Nº OF BALLASTS IN ENCLOSURE	LENGTH 2'-0"	W-0"	BALLAST SPACING	REMARKS
2-TYPE "F-1"	2	X		NOTE #1	
3-TYPE "F-1"	3	X		NOTE #2	
5-TYPE "F-1"	5		X	NOTE #3	
6-TYPE "F-1"	6		X	NOTE #4	
2-TYPE "F-2"	3	X		NOTE #5	
3-TYPE "F-2"	5		X	NOTE #6	2-LAMP BALLAST

BALLAST NOTES

- 1'-0" FROM END 1'-0" ON CENTER.
- 9" FROM END 1'-3" ON CENTER.
- 9" FROM END 1'-1/2" ON CENTER.
- 6" FROM END 1'-0" ON CENTER.
- SAME AS NOTE #2
- SAME AS NOTE #3

4-1-74 CONFORMED DWGS

No. DATE REVISION

STATE UNIVERSITY OF NEW YORK COLLEGE AT PURCHASE

STATE UNIVERSITY CONSTRUCTION FUND PROJECT NUMBER 2922

MUSIC

EDWARD LARRABEE BARNES FALLA architect

PETER C. BOLLAND landscape architect

WERNER AND PETER NORTH consulting engineers

SEIGNER AND DALTON consulting engineers

PLAN BASEMENT SOUTH L.T.G.

M

SCALE DRAWN DATE

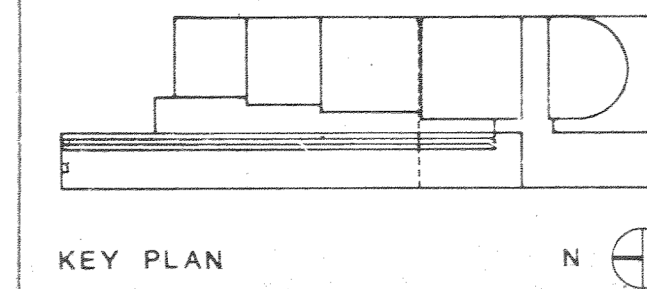
E-4

SU-081523 - Upgrades to Campus Security Project

Visual Arts Building Basement Level - North End

Reflected Ceiling Plan

FOR REFERENCE ONLY



KEY PLAN

GENERAL NOTES

1. SEE DWG. "E-4" FOR DETAILS OF REMOTE BALLAST ENCLOSURE.

2. FOR CONTROL OF EMERG. LIG. SEE WIRING DIAGRAM DWG. "E-10".

3. ALL FLUORESCENT LIGHTING FIXTURES ON THIS DWG. SHALL BE TYPE "F-1" UNLESS OTHERWISE NOTED.

4. COORDINATE LOCATION AND MOUNTING OF FIXTURES TYPE "F-3" WITH HORIZONTAL 3"x3" STEEL MEMBER IN VESTIBULE CEILING.

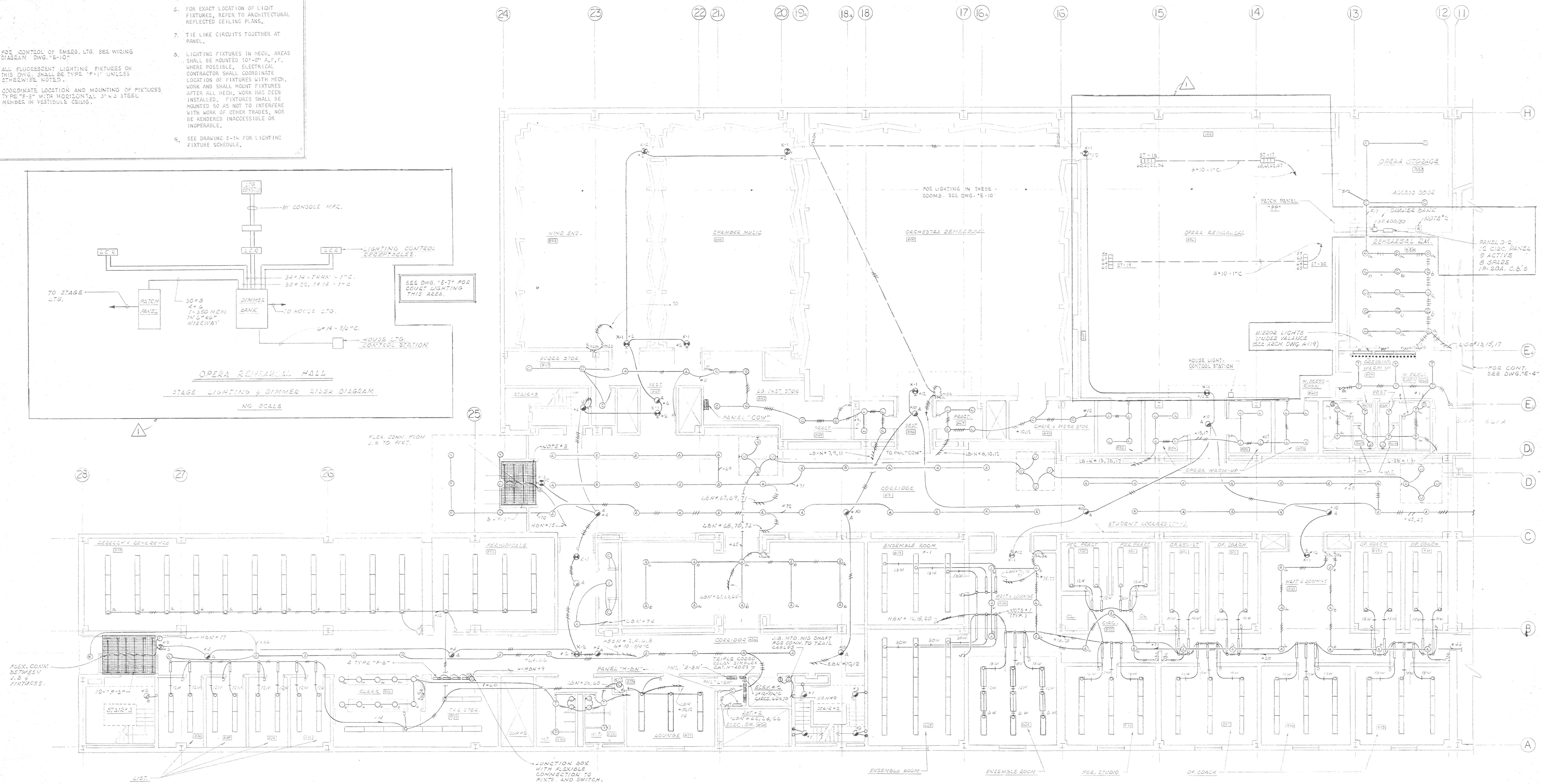
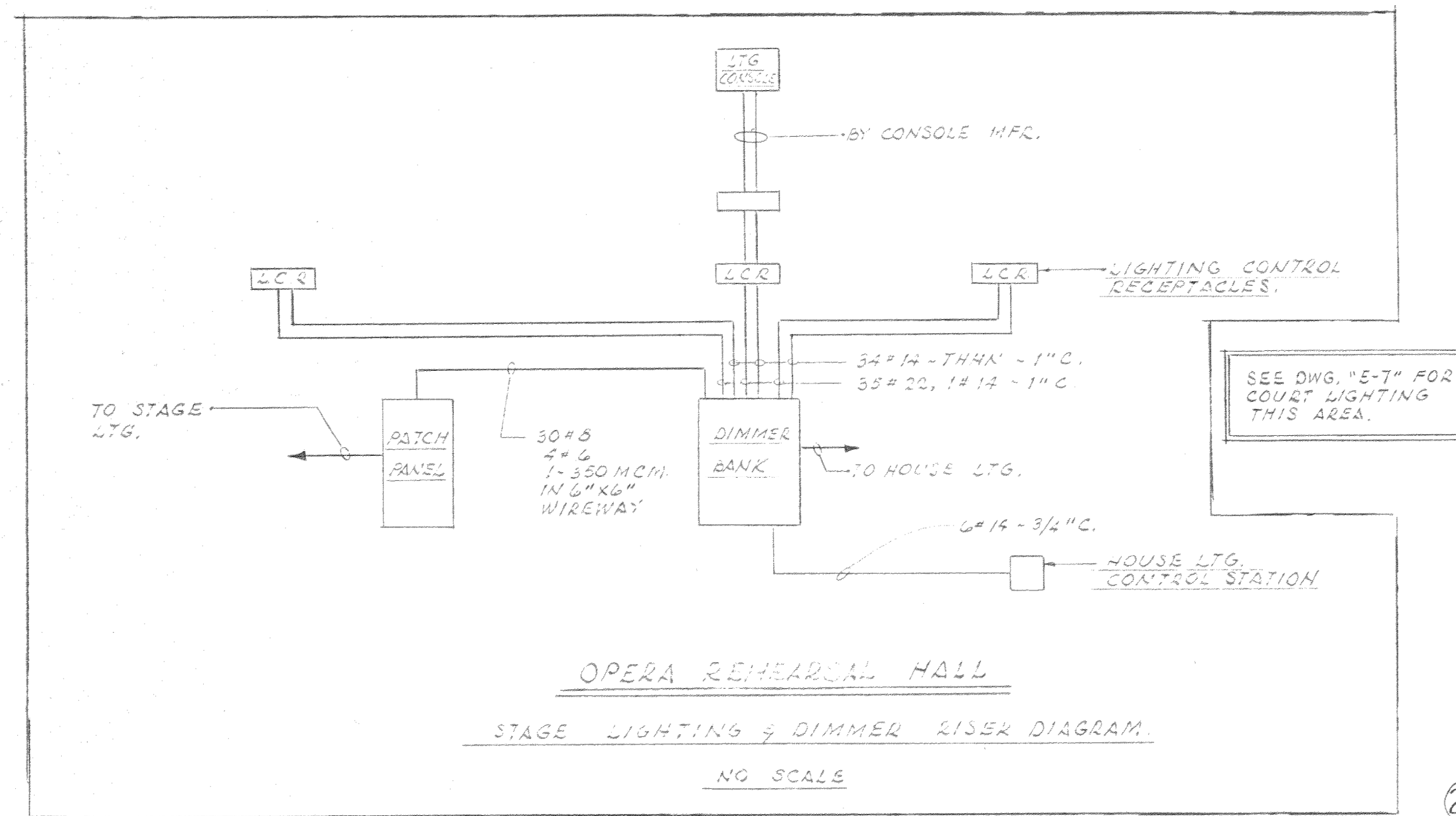
5. WHERE GANGED SWITCHING IS INDICATED FOR 277 VOLT LIGHTING CIRCUITS, PROVIDE BARRIERS BETWEEN SWITCHES (PHASES) WHERE MORE THAN ONE PHASE LEG ENTER BOX.

6. FOR EXACT LOCATION OF LIGHT FIXTURES, REFER TO ARCHITECTURAL REFLECTED CEILING PLANS.

7. TIE LIKE CIRCUITS TOGETHER AT PANEL.

8. LIGHTING FIXTURES IN MECH. AREAS SHALL BE MOUNTED 10'-0" A.F.F. WHERE POSSIBLE. ELECTRICAL CONTRACTOR SHALL COORDINATE LOCATION OF FIXTURES WITH MECH. WORK AND SHALL MOUNT FIXTURES AFTER ALL MECH. WORK HAS BEEN INSTALLED. FIXTURES SHALL BE MOUNTED SO AS NOT TO INTERFERE WITH WORK OF OTHER TRADES, NOR BE RENDERED INACCESSIBLE OR INOPERABLE.

9. SEE DRAWING E-14 FOR LIGHTING FIXTURE SCHEDULE.

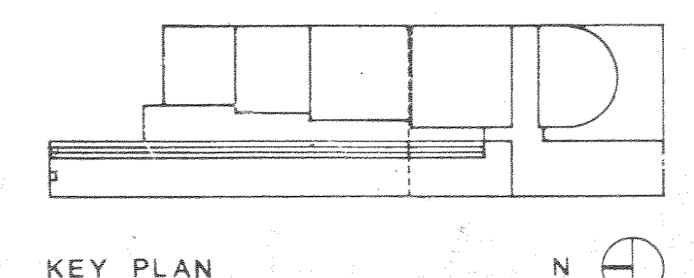


SU-081523 - Upgrades to Campus Security Project

Visual Arts Building Basement Level - North End

Reflected Ceiling Plan

FOR REFERENCE ONLY

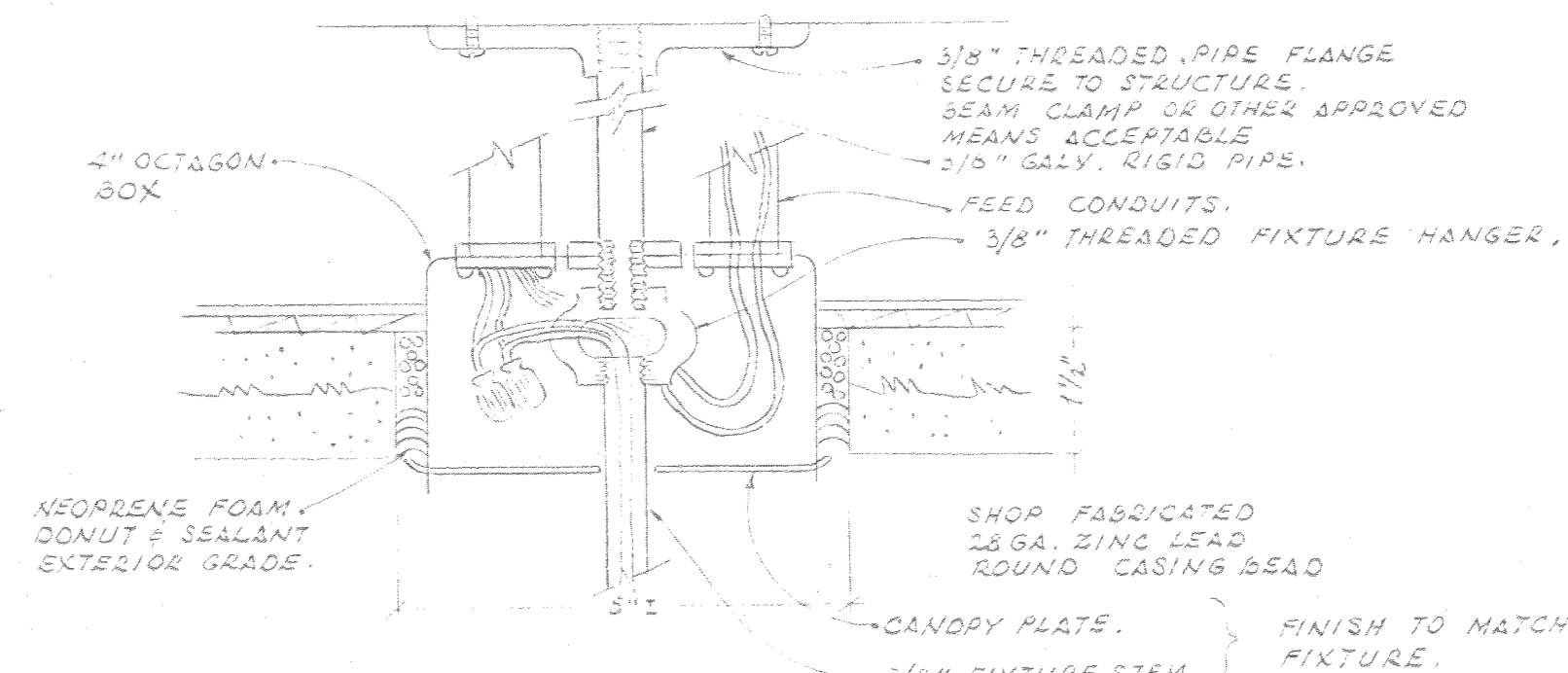
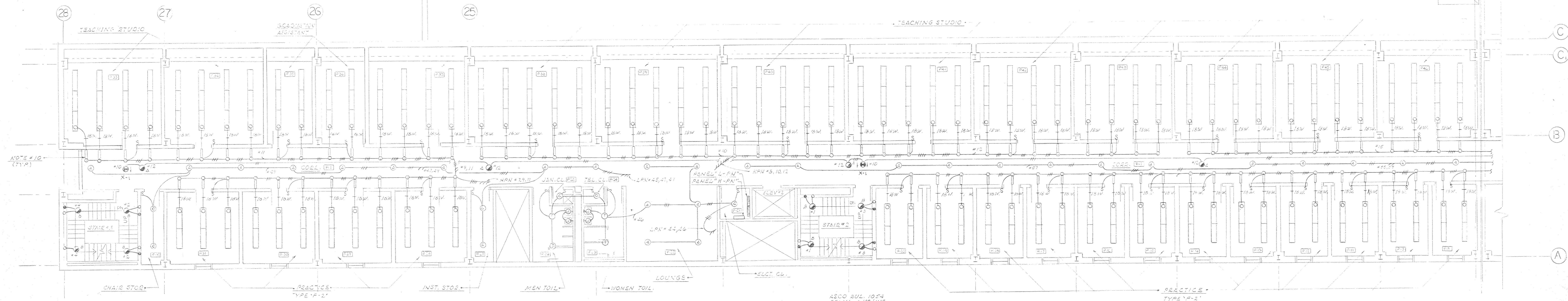
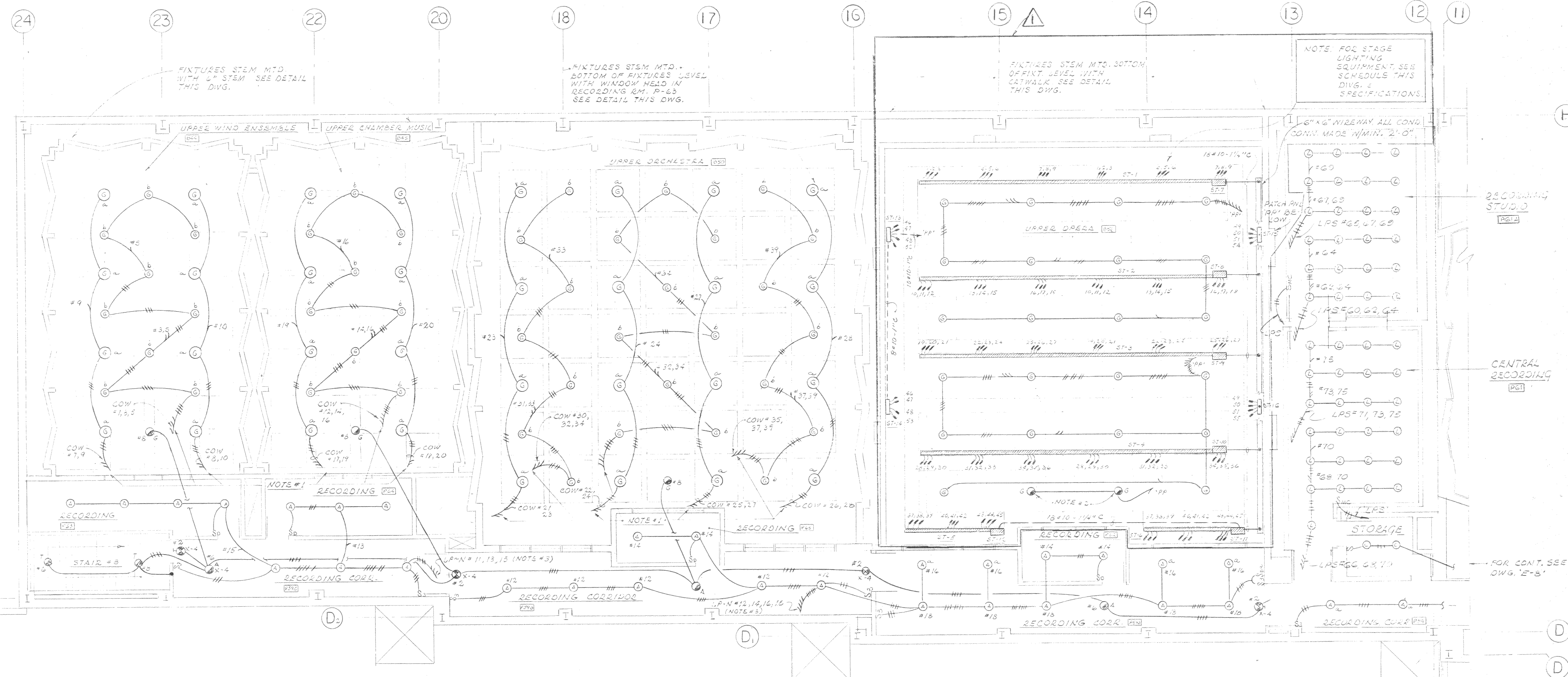


4-1-74	CONFORMED DWGS.
DATE	REVISION
STATE UNIVERSITY OF NEW YORK COLLEGE AT PURCHASE	
STATE UNIVERSITY CONSTRUCTION FUND PROJECT NUMBER 2922	
MUSIC	
EDWARD LARABEE BARNES F.A.A. architect	
PETER G. ROLLAND landscape architect	
VERAHOFF AND PRAKOWORTH consulting engineers	
SENNER AND DALTON consulting engineers	
PLAN BASEMENT NORTH LIG.	
M	E-6
SCALE	DATE OCT 78

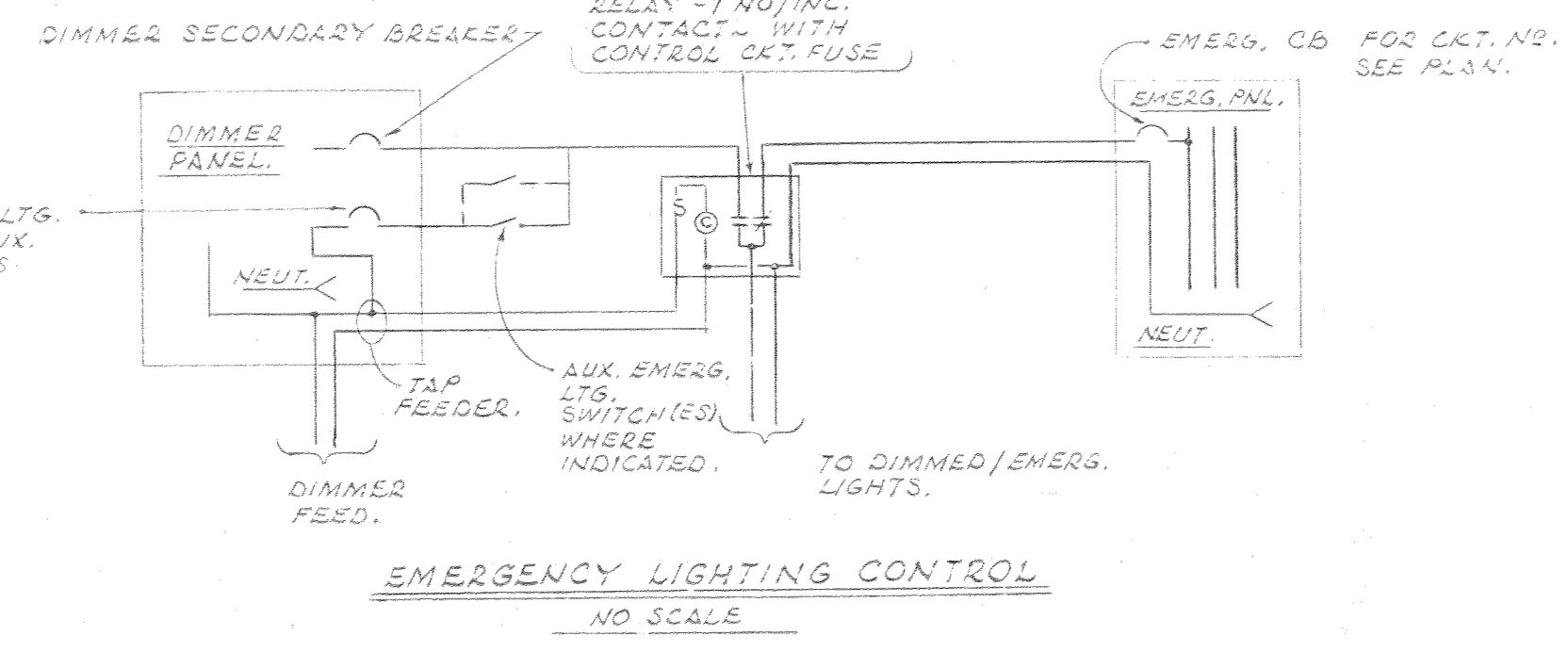
GENERAL NOTES

1. ON TO PNL "CON" IN ROOM 8-142
2. FOR CONTROL OF EMERGENCY LIGHTING SEE WIRING DIAGRAM THIS DWG.
3. VIA BASEMENT CEILING OR PLAZA SLAB.
4. ALL FLUORESCENT FIXTURES SHOWN ON THIS DWG. SHALL BE TYPE "F-1" UNLESS OTHERWISE NOTED.
5. LIGHTING FIXTURES IN MECH. AREAS SHALL BE MOUNTED 10'-0" A.F.F. WHERE POSSIBLE. ELECTRICAL CONTRACTOR SHALL COORDINATE LOCATION OF FIXTURES WITH MECH. WORK AND SHALL MOUNT FIXTURES AFTER ALL MECH. WORK HAS BEEN INSTALLED. FIXTURES SHALL BE MOUNTED SO AS NOT TO INTERFERE WITH WORK OF OTHER TRADES, NOR BE RENDERED INACCESSIBLE OR INOPERABLE.
6. SEE DRAWING E-14 FOR LIGHTING FIXTURE SCHEDULE.
7. WHERE CHANGED SWITCHING IS INDICATED FOR 277 VOLT LIGHTING CIRCUITS, PROVIDE BARRIERS BETWEEN SWITCHES (PHASES) WHERE MORE THAN ONE PHASE LEC ENTERS BOX.
8. FOR EXACT LOCATION OF LIGHT FIXTURES, REFER TO ARCHITECTURAL REFLECTED CEILING PLANS.
9. TIE LIKE CIRCUITS TOGETHER AT PANEL.
10. SEE DWG. "E-4" FOR DETAIL OF REMOTE BALLAST END.

EQUIP. NO.	DESCRIPTION	CENTURY CAT. NO.	CIRCUIT NOS.	REMARKS
ST-1	CONNECTOR STRIP	62-41-6P/SP	1-9	MTD. ON CATWALK VERT. PIPE RAILS BRACKETS 6 FT. O.C. 9 CIRCUITS, 18'-0" LONG PIGTAILS, 20A, 3W GROUNDED PIN CONNS.
ST-2	CONNECTOR STRIP	62-41-6P/SP	10-18	"
ST-3	CONNECTOR STRIP	62-41-6P/SP	19-27	"
ST-4	CONNECTOR STRIP	62-41-6P/SP	28-36	"
ST-5	CONNECTOR STRIP	62-13-6P/SP	37-45	9 CIRCUITS, 9 - 4'-0" PIGTAILS, 20A, 3W GROUNDED PIN CONNS.
ST-6	CONNECTOR STRIP	62-13-6P/SP	37-45	"
ST-7	GRID IRON JUNCTION BOX	5430	1-9	CLG. MOUNTING - 1-1/4" GREENFIELD CONNECTIONS IN; 1-1/4" ENT OUT.
ST-8	GRID IRON JUNCTION BOX	5430	10-18	"
ST-9	GRID IRON JUNCTION BOX	5430	19-27	"
ST-10	GRID IRON JUNCTION BOX	5430	28-36	"
ST-11	GRID IRON JUNCTION BOX	5430	37-45	"
ST-12	GRID IRON JUNCTION BOX	5460	37-45	"
ST-13	PIGTAIL JUNCTION BOX	6035/SP	46,47,48,52	WALL MOUNTED, 4 CIRCUITS, 4'-0" PIGTAILS, 20A, 3W, GROUNDED P14 CONNS.
ST-14	PIGTAIL JUNCTION BOX	6039/SP	46,47,48,52	"
ST-15	PIGTAIL JUNCTION BOX	6035/SP	49,50,51,54	"
ST-16	PIGTAIL JUNCTION BOX	6035/SP	49,50,51,55	"
ST-17	FLOOR POCKET	6031	60,61,62,56	FLUSH FLOOR MOUNTED
ST-18	FLOOR POCKET	6031	60,61,62,57	FLUSH FLOOR MOUNTED
ST-19	FLOOR POCKET	6031	63,64,65,58	FLUSH FLOOR MOUNTED
ST-20	FLOOR POCKET	6031	63,64,65,59	FLUSH FLOOR MOUNTED



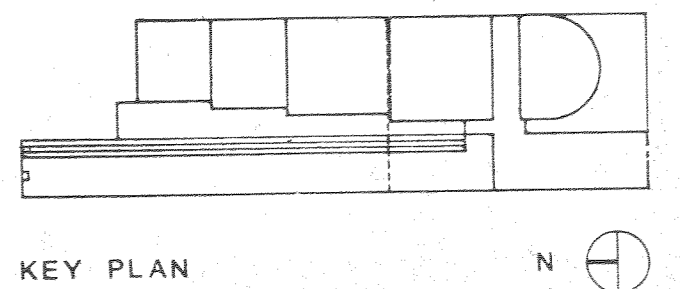
TYPICAL STEM DETAIL - ACOUSTIC PLASTER CLGS.
SCALE: 1/2" = 1'



EMERGENCY LIGHTING CONTROL
NO SCALE

1. RELAY SHOWN DEENERGIZED
2. ALL CIRCUIT CONNECTIONS SHALL BE MADE FROM THE SAME PHASE.

SU-081523 - Upgrades to Campus Security Project
Visual Arts Building Basement Level - North End
Reflected Ceiling Plan
FOR REFERENCE ONLY



KEY PLAN

4-174 CONFORMED DWGS
DATE REVISION
STATE UNIVERSITY OF NEW YORK COLLEGE AT PURCHASE
STATE UNIVERSITY CONSTRUCTION FUND
project number 2922
MUSIC
EDWARD LARSEN & EARNES FALLA
PETER C. BOLLAND
WEISSHOFF AND PICKWORTH
SENER AND DALTON
PLAN PLAZA NORTH LIGHTING
M
SCALE
DRAWN
E-10
DATE
9 OCT. 73

GENERAL NOTES

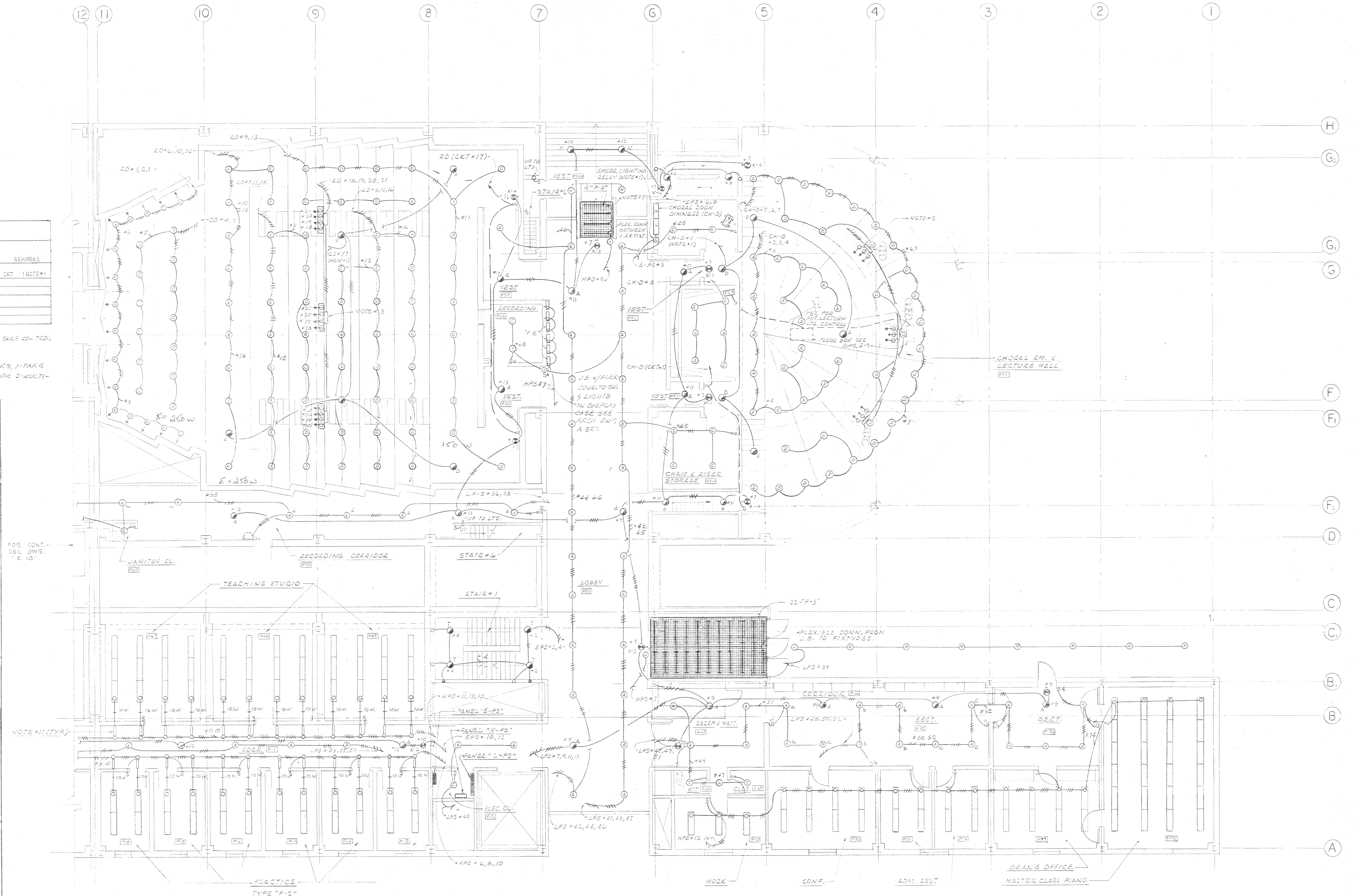
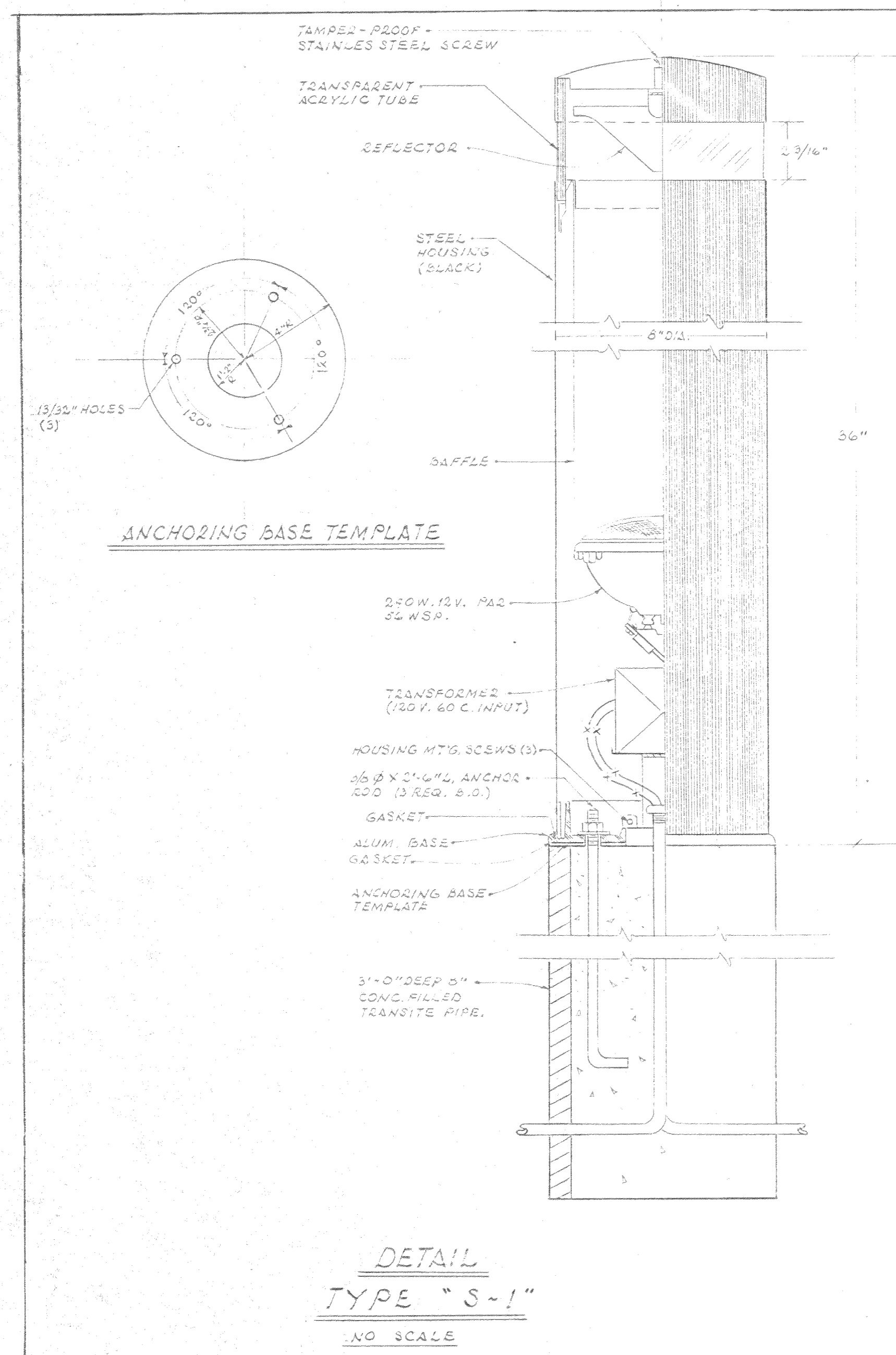
- FOR CONTROL OF EMERGENCY L.T.G. SEE WIRING DIAGRAM DWG "E-10".
- 3 GANG FLUSH PLUG-IN BOX (3500) M.T.O. IN ARCHITECTURAL RECESS - CENTURY CAT. NO. 4015 OR APP'D. EQUAL.
- 4 GANG FLUSH PLUG-IN BOX (3500) M.T.O. IN ARCHITECTURAL RECESS - CENTURY CAT. NO. 4035 OR APP'D. EQUAL.
- ALL FLUORESCENT LIGHTING FIXTURES SHOWN ON THIS DWG. SHALL BE TYPE "F-1" UNLESS OTHERWISE NOTED.
- COORDINATE LOCATION AND MOUNTING OF FIXTURE TYPE "F-1" WITH HORIZONTAL 3"X3" STEEL MEMBER IN VESTIBULE CEILING.
- WHERE GANGED SWITCHING IS INDICATED FOR 277 VOLT LIGHTING CIRCUITS, PROVIDE BARRIERS BETWEEN SWITCHES (PHASES) WHERE MORE THAN ONE PHASE LEC ENTER BOX.
- FOR EXACT LOCATION OF LIGHT FIXTURES, REFER TO ARCHITECTURAL REFLECTED CEILING PLANS.
- TIE LINE CIRCUITS TOGETHER AT PANEL.
- LIGHTING FIXTURES IN MECH. AREAS SHALL BE MOUNTED 10'-0" A.F.F. WHERE POSSIBLE. ELECTRICAL CONTRACTOR SHALL COORDINATE LOCATION OF FIXTURES WITH MECH. WORK AND SHALL MOUNT FIXTURES AFTER ALL MECH. WORK HAS BEEN INSTALLED. FIXTURES SHALL BE MOUNTED SO AS NOT TO INTERFERE WITH WORK OF OTHER TRADES, NOR BE RENDERED INACCESSIBLE OR INOPERABLE.
- SEE DRAWING E-14 FOR LIGHTING FIXTURE SCHEDULE.
- SEE DWG "E-1" FOR DETAIL OF REMOTE BALLAST ENCL.

CHORAL ROOM DIMMER SCHEDULE (CH-D)

LIGHTS CONTROLLED	CKT. NOS. CONTROLLED	DIMMER ASSY. NO. 1 CENTURY CAT. NO.	DIMMER SIZE	CONTROLLED FROM (W/M MASTER)	PRIMARY CB (MIN)	SECONDARY CB's	REMARKS
HOUSE LIGHTING	1, 2, 5	1	2150-1-100B	4 KW	CS-4 (M)	35 A	4-20 A
	3, 6			4 KW	35 A	3-20 A	
	4, 7			4 KW	35 A	3-20 A	
STAGE DOWNLIGHTS	8	2	2150-1-100B	4 KW	CS-4 (M)	35 A	3-20 A
ELLIPSOIDAL SPOT LOTS, 9, 10				4 KW	CS-4 (M)	35 A	3-20 A
ELLIPSOIDAL SPOT LOTS, 11				4 KW	CS-4 (M)	35 A	3-20 A

FILED REMOTE CONTROL STATION FOR "CH-D" - 100W/1, 4-POTENTIOMETERS, 1-MASTER FOR 4 DIMMERS, 1-TAKE CONTROL SWITCH.

PORTABLE REMOTE CONTROL STATION FOR "CH-D" - 100W/1, 4-POTENTIOMETERS, 1-MASTER FOR 4 DIMMERS, 1-TAKE CONTROL SWITCH, 1-MULTI-POLE PLUG W/ 6'-0" OF MULTI-CONDUCTOR CONTROL CABLE - ALSO PROVIDE 2-MULTI-POLE MATCHING RECEPTACLES.

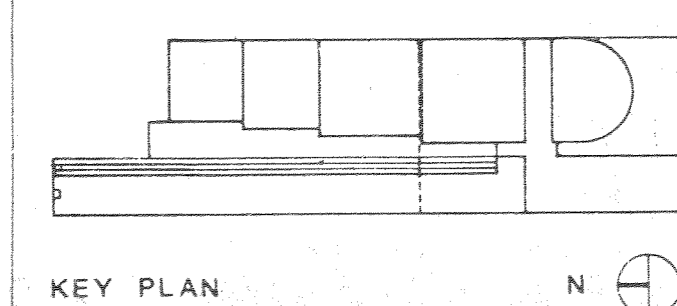


SU-081523 - Upgrades to Campus Security Project

Visual Arts Building Basement Level - North End

Reflected Ceiling Plan

FOR REFERENCE ONLY



KEY PLAN

N

4-1-74	CONFORMED DWGS.
DATE	REVISION
STATE UNIVERSITY OF NEW YORK PURCHASE STATE UNIVERSITY CONSTRUCTION FUND project number 2922 MUSIC EDWARD LARRABEE BARNES FALA. PETER C. BOLLAND WENKHOFF AND PENNORTH SINGER AND DALTON architect landscape architect consulting engineers consulting engineers	
PLAN PLAZA SOUTH LIGHTING M SCALE DRAWN DATE 9 OCT, 73	