

SUCF #29409



Purchase College
STATE UNIVERSITY OF NEW YORK

CANNONDESIGN

360 Madison Ave, Suite 1100
New York, New York 10017
T: 212.972.9800 F: 212.972.9191

Boston ■ New York ■ Baltimore ■ Washington DC ■ Buffalo
Toronto ■ Chicago ■ St. Louis ■ Calgary ■ Vancouver ■ Victoria
San Francisco ■ Los Angeles ■ Shanghai

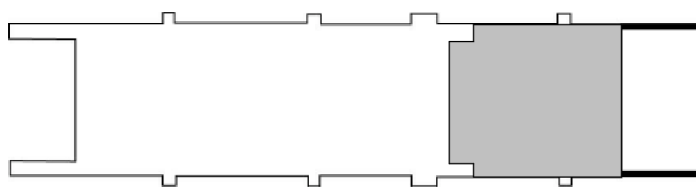
Consultants:

**CLINE BETTRIDGE BERNSTEIN LIGHTING
DESIGN INC.**
30 West 22nd Street, 4th Floor
New York, NY 10010
T: 212.741.3280
F: 212.741.3112

LALLY ACOUSTICAL CONSULTING
611 Broadway #907h
New York, NY 10012
T: 212.614.3280

WATTS ARCHITECTURE & ENGINEERING, P.C.
South Side Innovation Center
2610 South Salina Street, Suite 2B
Syracuse, NY 13205
T: 315.443.8611
F: 315.443.8605

YAS - YSRAEL SEINUK, P.C.
228 East 45th Street, 2nd Floor
New York, NY 10017
T: 212.687.2233
F: 646.487.5555



KEYPLAN

SU-081523 - Upgrades to Campus Security Project

Visual Arts Building Basement Level
- North End

Reflected Ceiling Plan

FOR REFERENCE ONLY

	Pre-Bid Set	07/26/2013
	Design Manual Set	04/23/2012
*	Schematic Design Set	12/08/2011
No.	Description	Date

Drawing Title:

BASEMENT LEVEL
REFLECTED CEILING PLAN
- LIU TENANT SPACE

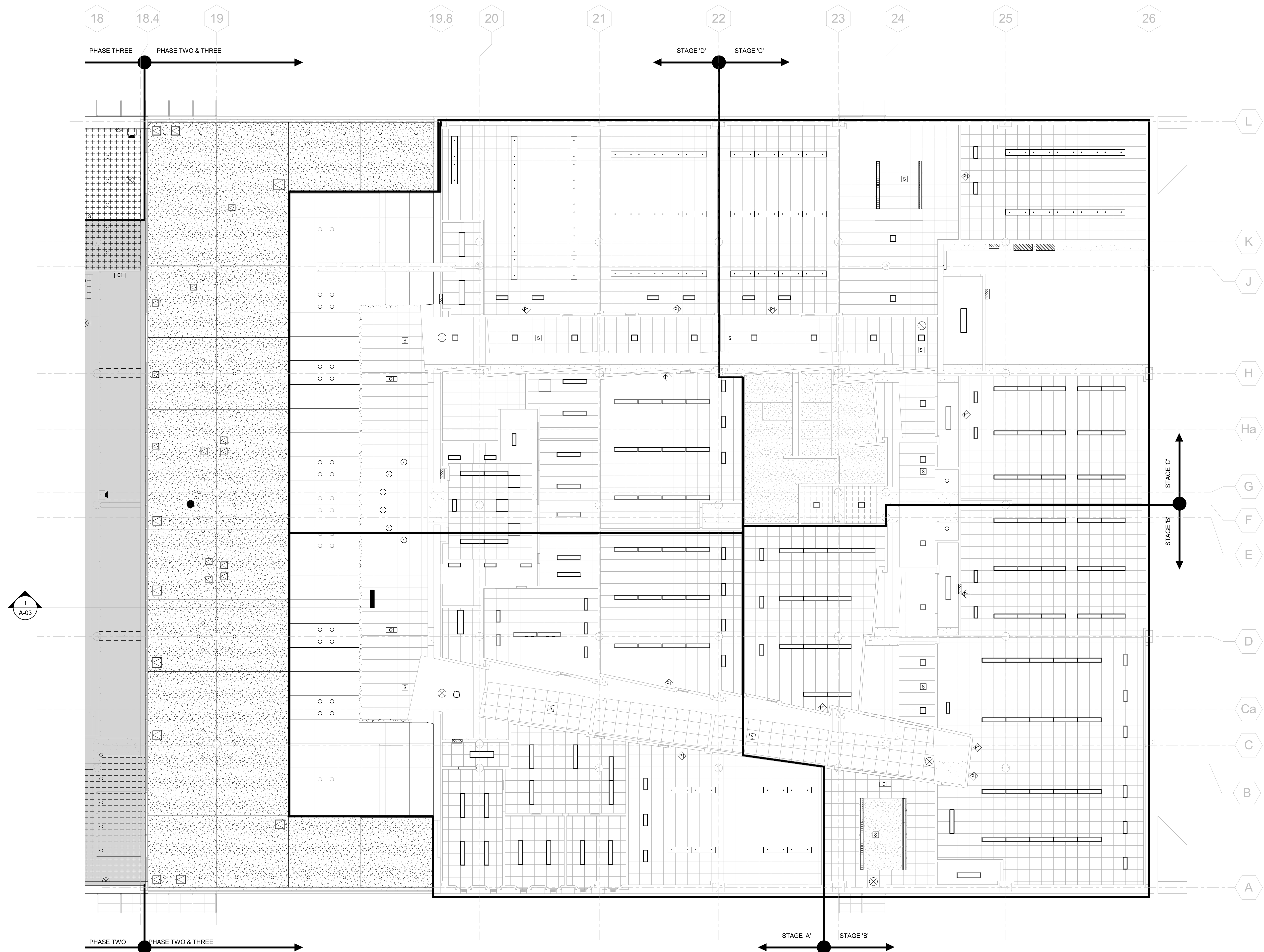
Issue Date:	7/26/13
Drawn by: Author	Checked by: Checker
Project No.: 03569.00	Scale: As indicated

A0700A.4

© Canon Design 2011

CEILING HEIGHT		HEIGHT OF CEILING ABOVE FINISHED FLOOR
LAY IN PANEL		
ACCESS DOOR		
LINEAR		
LUMINAIRE		
EXIT LUMINAIRE		
SPRINKLER HEAD		
AIR DEVICES - SUPPLY		

TYPE	DESCRIPTION
APC - 1	ACOUSTICAL PANEL CEILING TYPE 1
APC - 2	ACOUSTICAL PANEL CEILING TYPE 2
APC - 3	ACOUSTICAL PANEL CEILING TYPE 3
MPC-1	METAL PANEL CEILING TYPE 1
PGB-1	PAINTED GYPSUM BOARD TYPE 1
EPGB	EPOXY PAINTED GYPSUM BOARD
EXP	EXPOSED



1 BASEMENT LEVEL LIU REFLECTED CEILING PLAN
1/8" = 1'-0"

© Cannon Design 2011
All rights reserved. No part of this document may be reproduced or utilized in any form, without prior written authorization by The Cannon Corporation.
7/26/2013 1:47:11 PM

SUCF #29409



Purchase College
STATE UNIVERSITY OF NEW YORK

CANNONDESIGN

360 Madison Ave, Suite 1100
New York, New York 10017
T: 212.972.9800 F: 212.972.9191

Boston ■ New York ■ Baltimore ■ Washington DC ■ Buffalo
Toronto ■ Chicago ■ St. Louis ■ Calgary ■ Vancouver ■ Victoria
San Francisco ■ Los Angeles ■ Shanghai

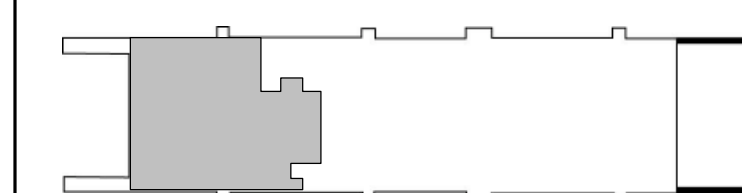
Consultants:

**CLINE BETTRIDGE BERNSTEIN LIGHTING
DESIGN INC.**
30 West 22nd Street, 4th Floor
New York, NY 10010
T: 212.741.3280
F: 212.741.3112

LALLY ACOUSTICAL CONSULTING
611 Broadway #907h
New York, NY 10012
T: 212.614.3280

WATTS ARCHITECTURE & ENGINEERING, P.C.
South Side Innovation Center
2610 South Salina Street, Suite 2B
Syracuse, NY 13205
T: 315.443.8611
F: 315.443.8605

YAS - YSRAEL SEINUK, P.C.
228 East 45th Street, 2nd Floor
New York, NY 10017
T: 212.687.2233
F: 646.487.5555



KEYPLAN

SU-081523 Upgrades to Campus Security Project

**Part Plan of Dance Bldg.
Basement Level South
Reflected Ceiling Plan**

For Reference Only

Pre-Bid Set	07/26/2013
Design Manual Set	04/23/2012
* Schematic Design Set	12/08/2011
No.	Description
Drawing Title:	

BASEMENT LEVEL
REFLECTED CEILING PLAN
- PHASE 1

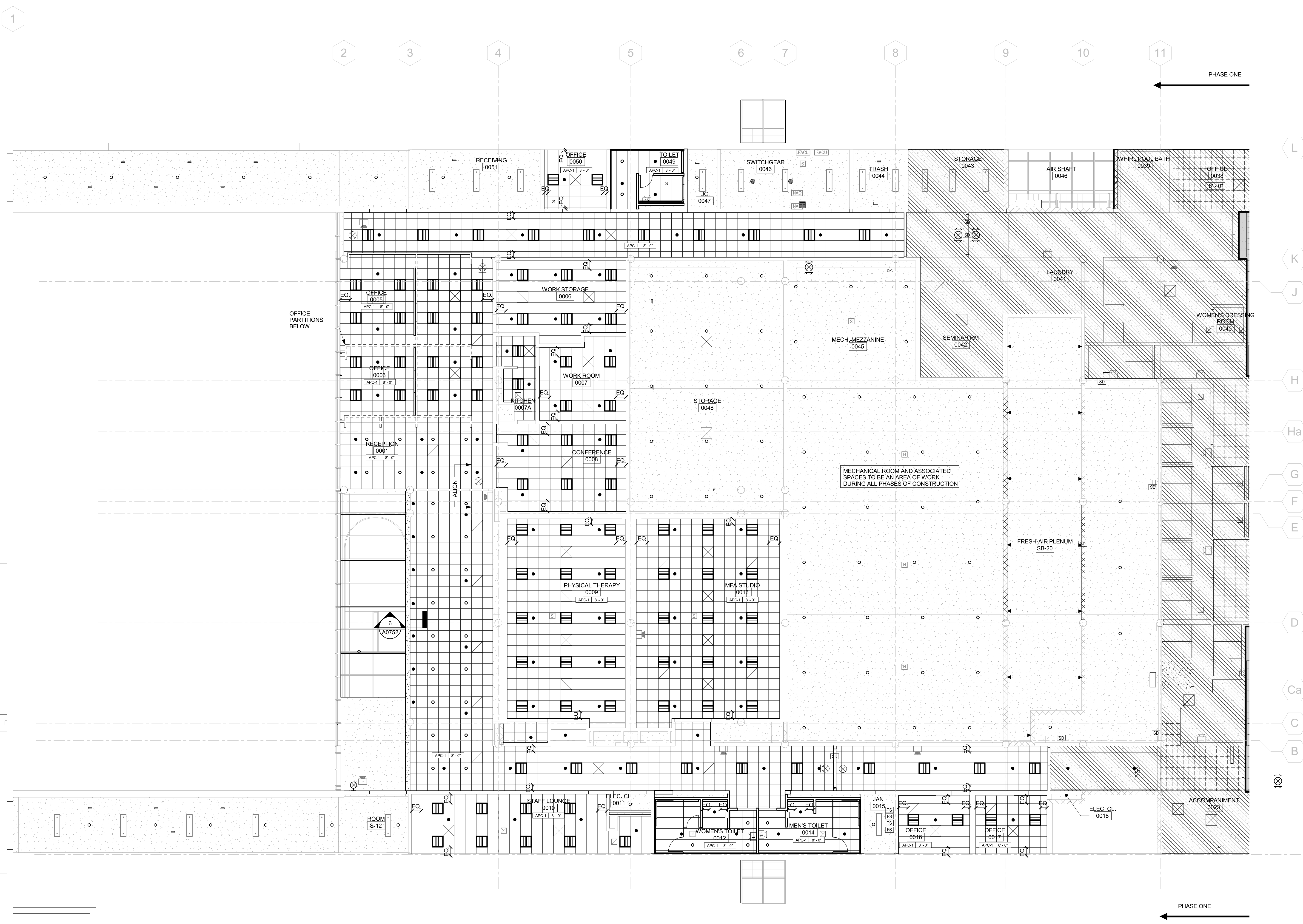
Issue Date:	7/26/13
Drawn by: AP	Checked by: CK
Project No.: 03569.00	Scale: As indicated

A0700A.1

© Cannon Design 2011

CEILING HEIGHT		HEIGHT OF CEILING ABOVE FINISHED FLOOR
LAY IN PANEL		
ACCESS DOOR		
LINEAR		
LUMINAIRE		
EXIT LUMINAIRE		
SPRINKLER HEAD		
AIR DEVICES - SUPPLY		

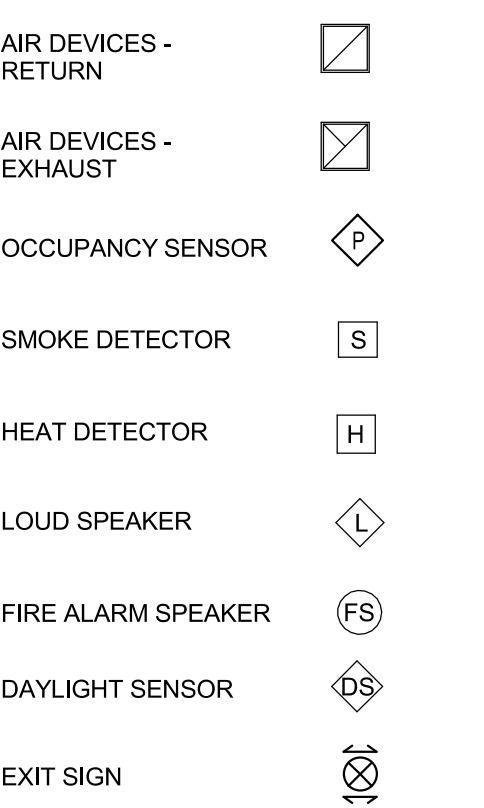
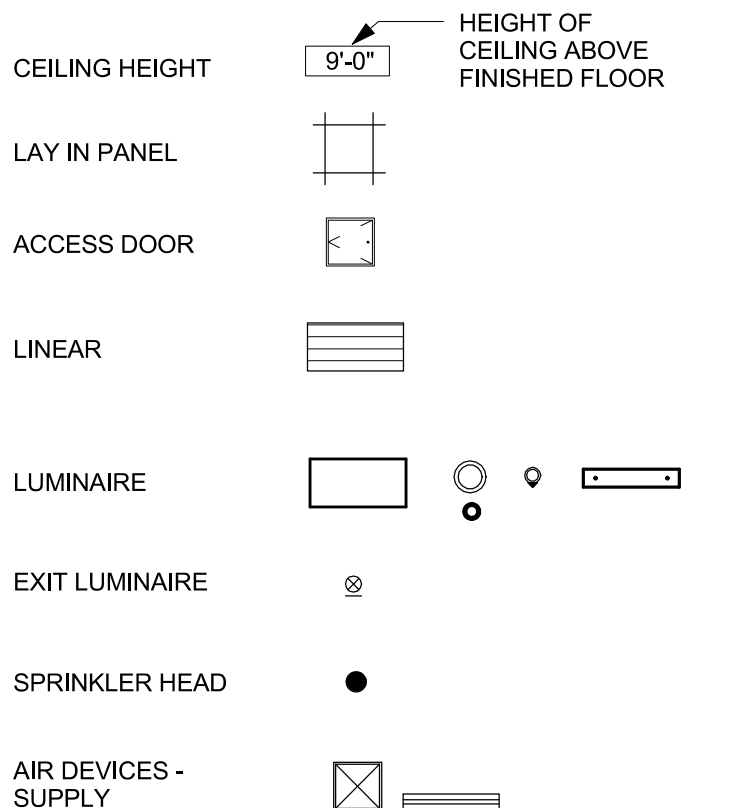
TYPE	DESCRIPTION
APC - 1	ACOUSTICAL PANEL CEILING TYPE 1
APC - 2	ACOUSTICAL PANEL CEILING TYPE 2
APC - 3	ACOUSTICAL PANEL CEILING TYPE 3
MPC-1	METAL PANEL CEILING TYPE 1
PGB-1	PAINTED GYPSUM BOARD TYPE 1
EPGB	EPOXY PAINTED GYPSUM BOARD
EXP	EXPOSED



1 BASEMENT LEVEL REFLECTED CEILING PLAN - PHASE 1
1/8" = 1'-0"

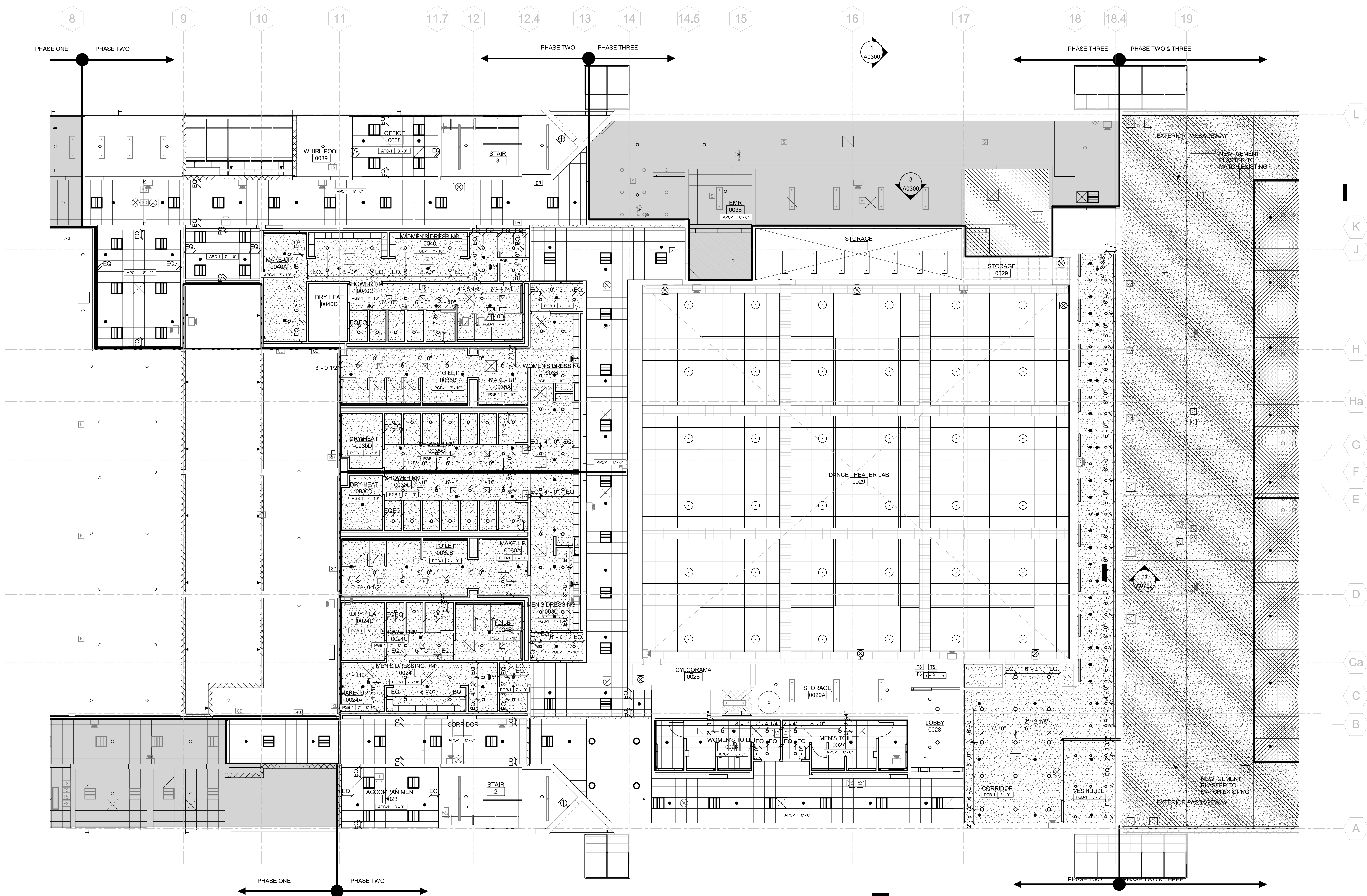
© Cannon Design 2011
All rights reserved. No part of this document may
be reproduced or utilized in any form, without prior
written authorization by The Cannon Corporation.
7/26/2013 1:46:48 PM

REFLECTED CEILING PLAN SYMBOLS



REFLECTED CEILING PLAN LEGEND

TYPE	DESCRIPTION
APC-1	ACOUSTICAL PANEL CEILING TYPE 1
APC-2	ACOUSTICAL PANEL CEILING TYPE 2
APC-3	ACOUSTICAL PANEL CEILING TYPE 3
MPC-1	METAL PANEL CEILING TYPE 1
PGB-1	PAINTED GYPSUM BOARD TYPE 1
EPOB	EPOXY PAINTED GYPSUM BOARD
EXP	EXPOSED



1 BASEMENT LEVEL REFLECTED CEILING PLAN - PHASE 2
1/8" = 1'-0"

HVAC RENOVATIONS
DANCE BUILDING

SUCF #29409



Purchase College
STATE UNIVERSITY OF NEW YORK

CANNON DESIGN

360 Madison Ave, Suite 1100
New York, New York 10017
T: 212.972.9800 F: 212.972.9191

Boston ■ New York ■ Baltimore ■ Washington DC ■ Buffalo
Toronto ■ Chicago ■ St. Louis ■ Calgary ■ Vancouver ■ Victoria
San Francisco ■ Los Angeles ■ Shanghai

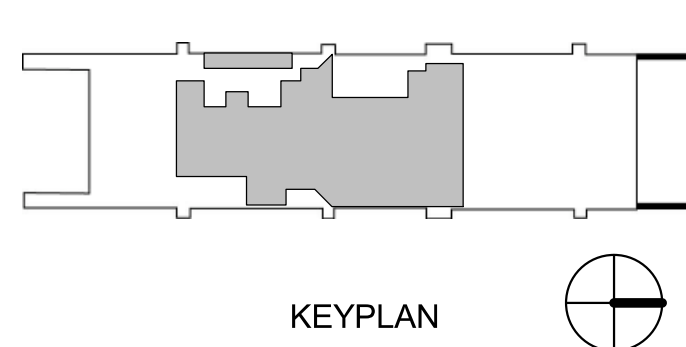
Consultants:

**CLINE BETTRIDGE BERNSTEIN LIGHTING
DESIGN INC.**
30 West 22nd Street, 4th Floor
New York, NY 10010
T: 212.741.3280
F: 212.741.3112

LALLY ACOUSTICAL CONSULTING
611 Broadway #507n
New York, NY 10012
T: 212.614.3280

WATTS ARCHITECTURE & ENGINEERING, P.C.
South Side Innovation Center
2610 South Salina Street, Suite 28
Syracuse, NY 13205
T: 315.443.8511
F: 315.443.8605

YAS - YSRAEL SEINUK, P.C.
228 East 45th Street, 2nd Floor
New York, NY 10017
T: 212.687.2233
F: 646.487.5555



**SU-081523 Upgrades to
Campus Security Project**

**Part Plan of Dance Bldg.
Basement Level Middle
Reflected Ceiling Plan**

For Reference Only

	Pre-Bid Set	07/26/2013
	Design Manual Set	04/23/2012
*	Schematic Design Set	12/08/2011
No.	Description	Date

Drawing Title:

Drawing Title:

BASEMENT LEVEL
REFLECTED CEILING PLAN
- PHASE 2

Issue Date:	7/26/13		
Drawn by:	AP	Checked by:	CK
Project No.:	03569.00	Scale:	As indicated

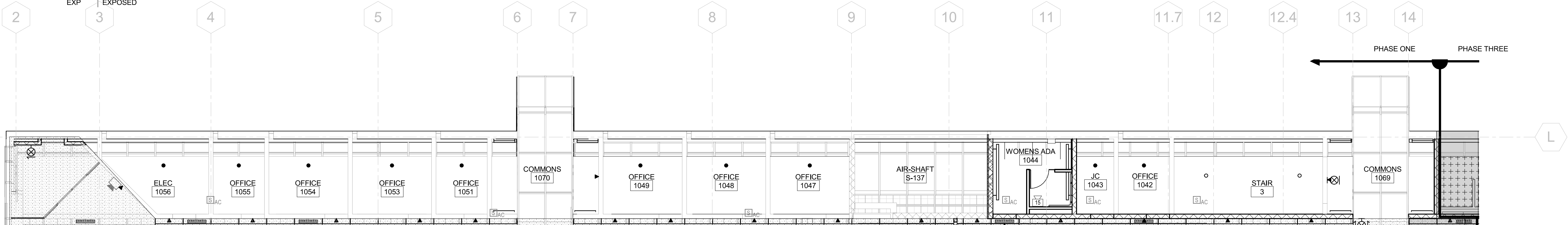
A0700A.2

REFLECTED CEILING PLAN SYMBOLS

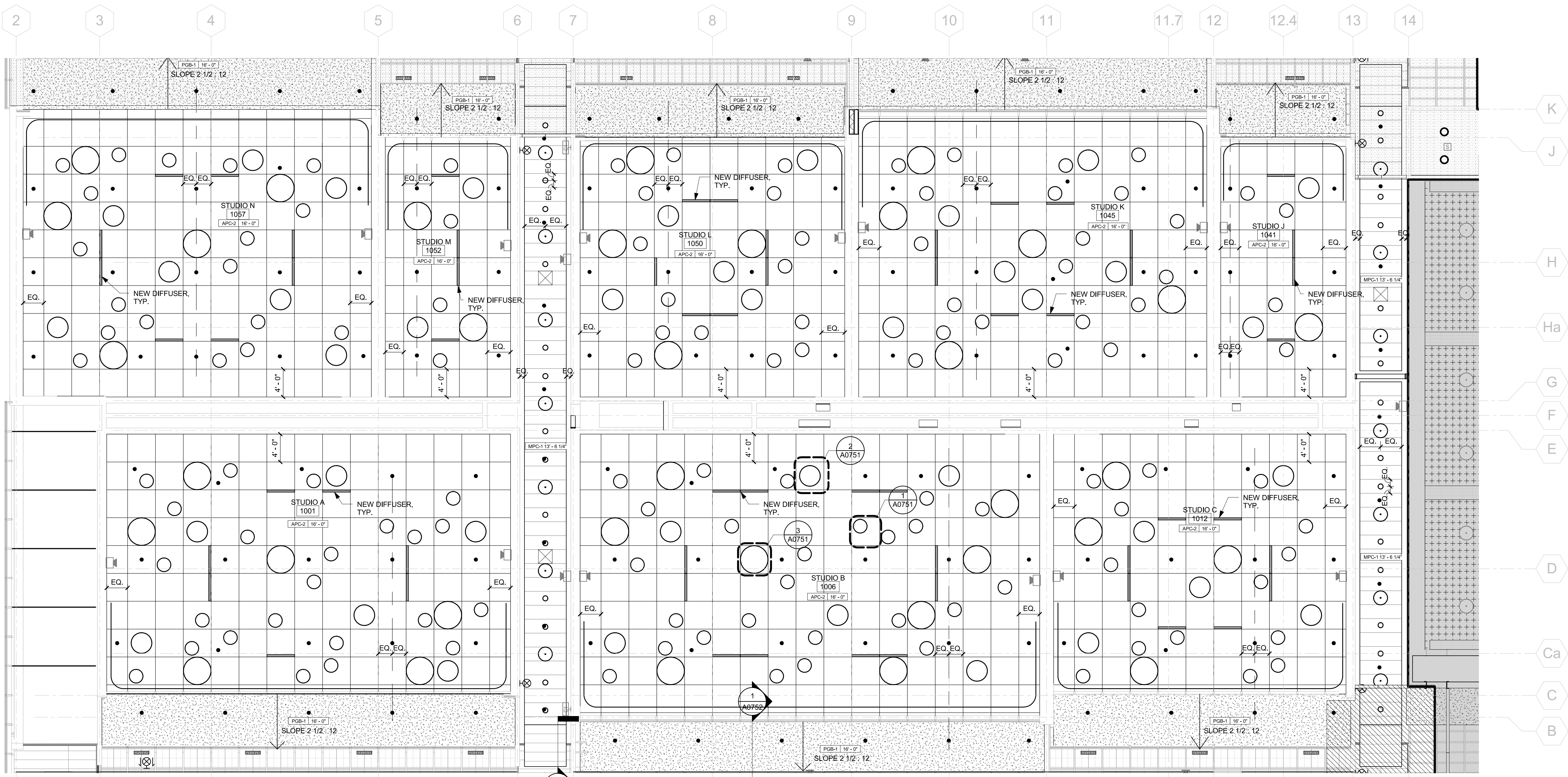
CEILING HEIGHT	9'-0"	HEIGHT OF CEILING ABOVE FINISHED FLOOR	AIR DEVICES - RETURN	
LAY IN PANEL			AIR DEVICES - EXHAUST	
ACCESS DOOR			OCCUPANCY SENSOR	
LINEAR			SMOKE DETECTOR	
LUMINAIRE			HEAT DETECTOR	
EXIT LUMINAIRE			LOUD SPEAKER	
SPRINKLER HEAD			FIRE ALARM SPEAKER	
AIR DEVICES - SUPPLY			DAYLIGHT SENSOR	
			EXIT SIGN	

REFLECTED CEILING PLAN LEGEND

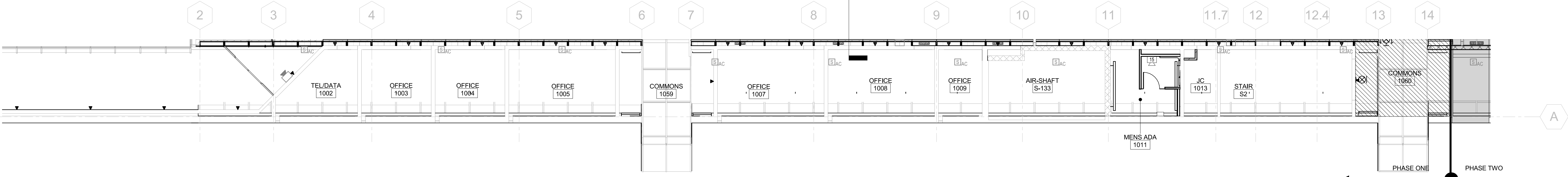
TYPE	DESCRIPTION
APC-1	ACOUSTICAL PANEL CEILING TYPE 1
APC-2	ACOUSTICAL PANEL CEILING TYPE 2
APC-3	ACOUSTICAL PANEL CEILING TYPE 3
MPC-1	METAL PANEL CEILING TYPE 1
PSB-1	PAINTED GYPSUM BOARD TYPE 1
EPGB	EPOXY PAINTED GYPSUM BOARD
EXP	EXPOSED



3 FIRST LEVEL REFLECTED CEILING PLAN - PHASE 1 _N Offices
1/8" = 1'-0"



1 FIRST LEVEL REFLECTED CEILING PLAN - PHASE 1
1/8" = 1'-0"



2 FIRST LEVEL REFLECTED CEILING PLAN - PHASE 1 - S. OFFICES
1/8" = 1'-0"

HVAC RENOVATIONS
DANCE BUILDING

SUCF #29409



Purchase College
STATE UNIVERSITY OF NEW YORK

CANNON DESIGN

360 Madison Ave, Suite 1100
New York, New York 10017
T: 212.972.9800 F: 212.972.9191

Boston ■ New York ■ Baltimore ■ Washington DC ■ Buffalo
Toronto ■ Chicago ■ St. Louis ■ Calgary ■ Vancouver ■ Victoria
San Francisco ■ Los Angeles ■ Shanghai

Consultants:

CLINE BETTRIDGE BERNSTEIN LIGHTING

DESIGN INC.
30 West 22nd Street, 4th Floor
New York, NY 10010
T: 212.741.3280
F: 212.741.3112

LALLY ACOUSTICAL CONSULTING

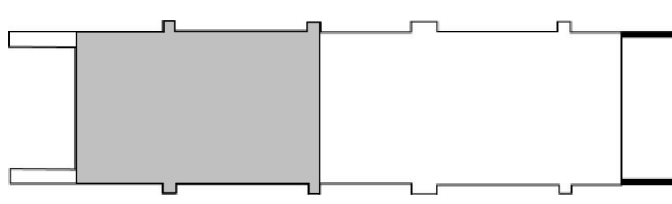
611 Broadway #507n
New York, NY 10012
T: 212.614.3280

WATTS ARCHITECTURE & ENGINEERING, P.C.

South Side Innovation Center
2610 South Salina Street, Suite 28
Syracuse, NY 13205
T: 315.443.8611
F: 315.443.8605

YAS - YISRAEL SEINUK, P.C.

228 East 45th Street, 2nd Floor
New York, NY 10017
T: 212.687.2530
F: 646.487.5555



KEYPLAN

SU-081523 - Upgrades to Campus
Security Project

Visual Arts Building Basement Level -
North End

Reflected Ceiling Plan

FOR REFERENCE ONLY

	Pre-Bid Set	07/26/2013
	Design Manual Set	04/23/2012
-	Schematic Design Set	12/08/2011
No.	Description	Date

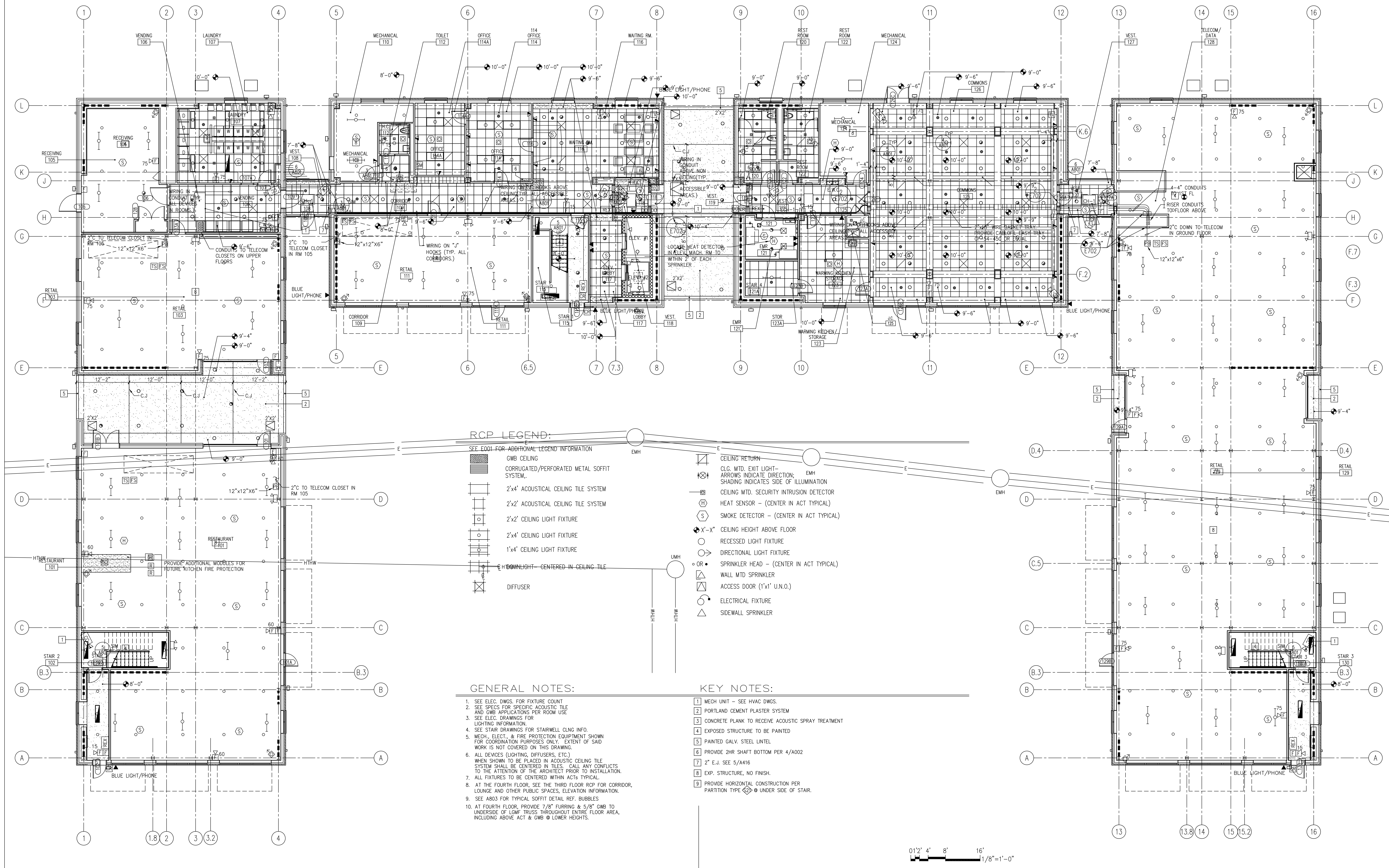
Drawing Title:

FIRST FLOOR LEVEL
REFLECTED CEILING PLAN
- PHASE 1

Issue Date:	7/26/13		
Drawn by:	AP	Checked by:	CK
Project No.:	03569.00	Scale:	As indicated

A0701.1

© Cannon Design 2011



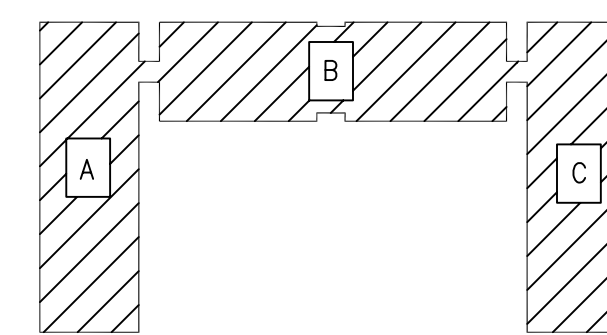
Einhorn Yaffee Prescott
Architecture & Engineering, P.C.
412 Broadway
P.O. Box 617
Albany, NY 12201-0617
Telephone: 518.431.3300
Fax: 518.431.3333
eyppae.com

EYP/

CONSULTANTS:

SU-081523 - Upgrades to Campus Security Project
Visual Arts Building Basement Level - North End
Reflected Ceiling Plan
FOR REFERENCE ONLY

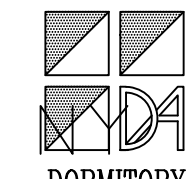
KEY PLAN:



"FINAL AS-BUILT SUBMISSION"

01/19/07

Purchase College
State University of

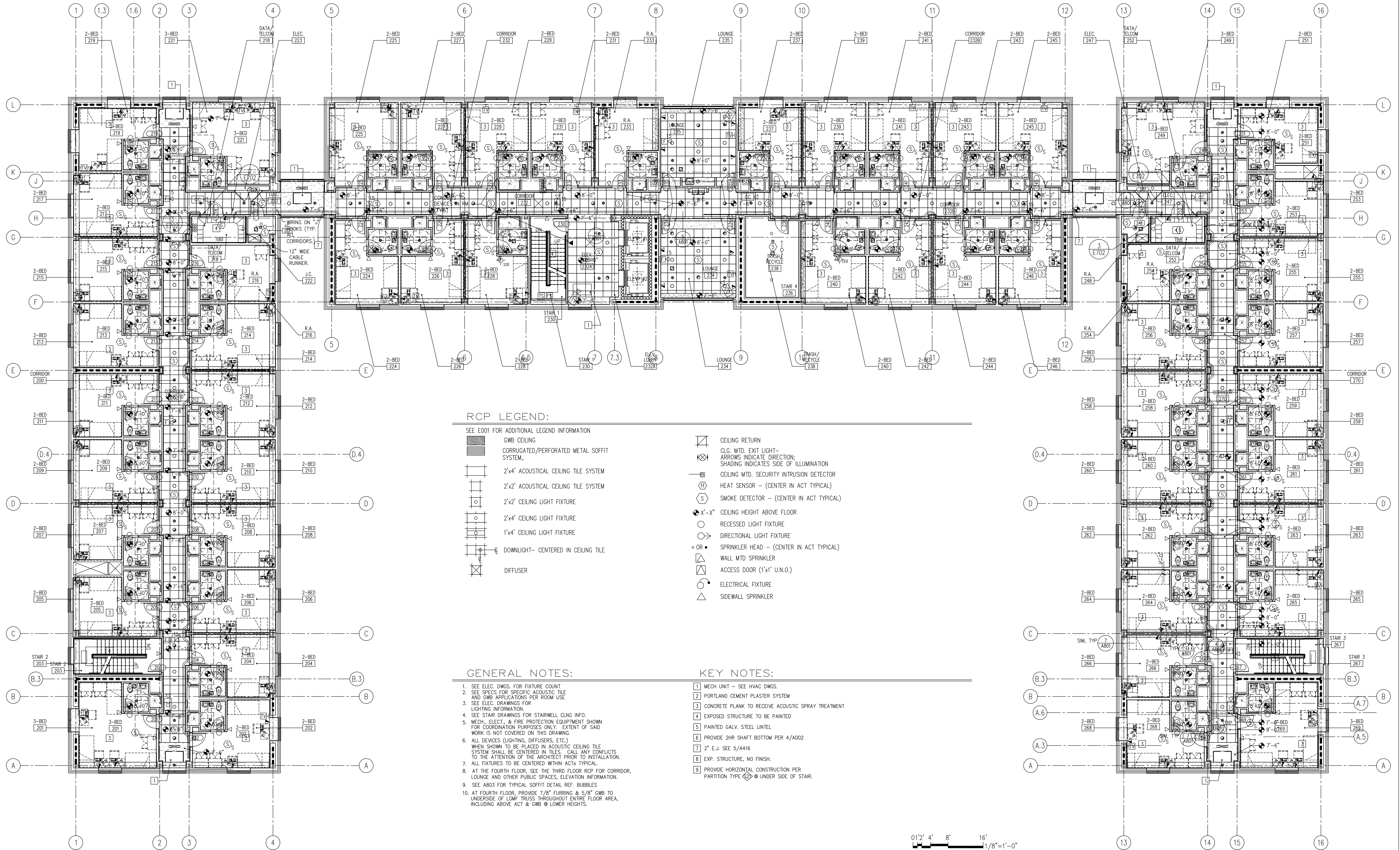


New Residence Hall
DASNY Project No. 24366
735 Anderson Hill Road, Purchase, New York 10577

DATE: 03.03.2005
SCALE: 1/8" = 1' - 0"
EYP PROJECT NO. 03044.00
DESIGNED BY: DH
DRAWN BY: ERM
CHECKED BY: DLC

OVERALL FIRST FLOOR
REFLECTED CEILING
PLAN

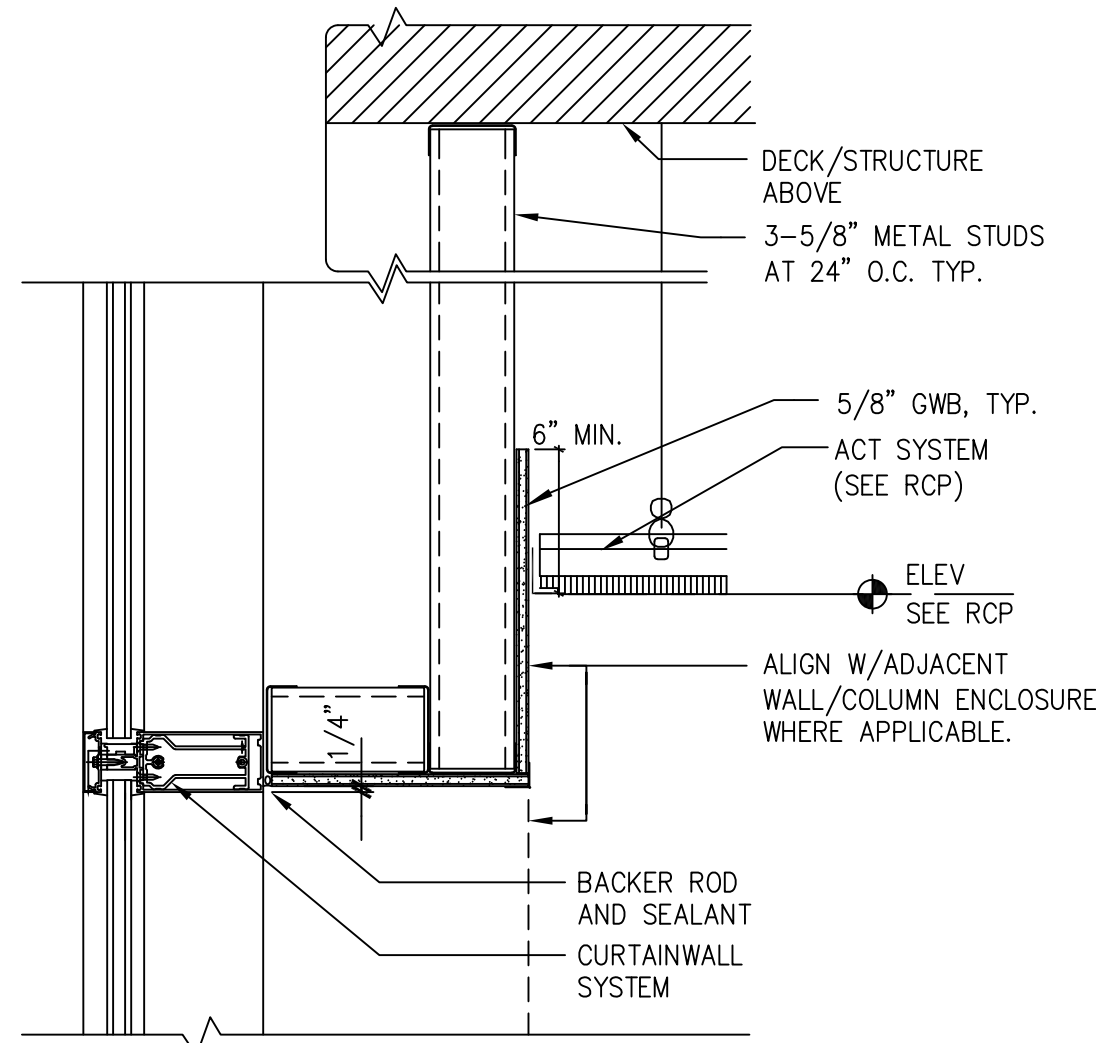
A802
BID SET DOCUMENT



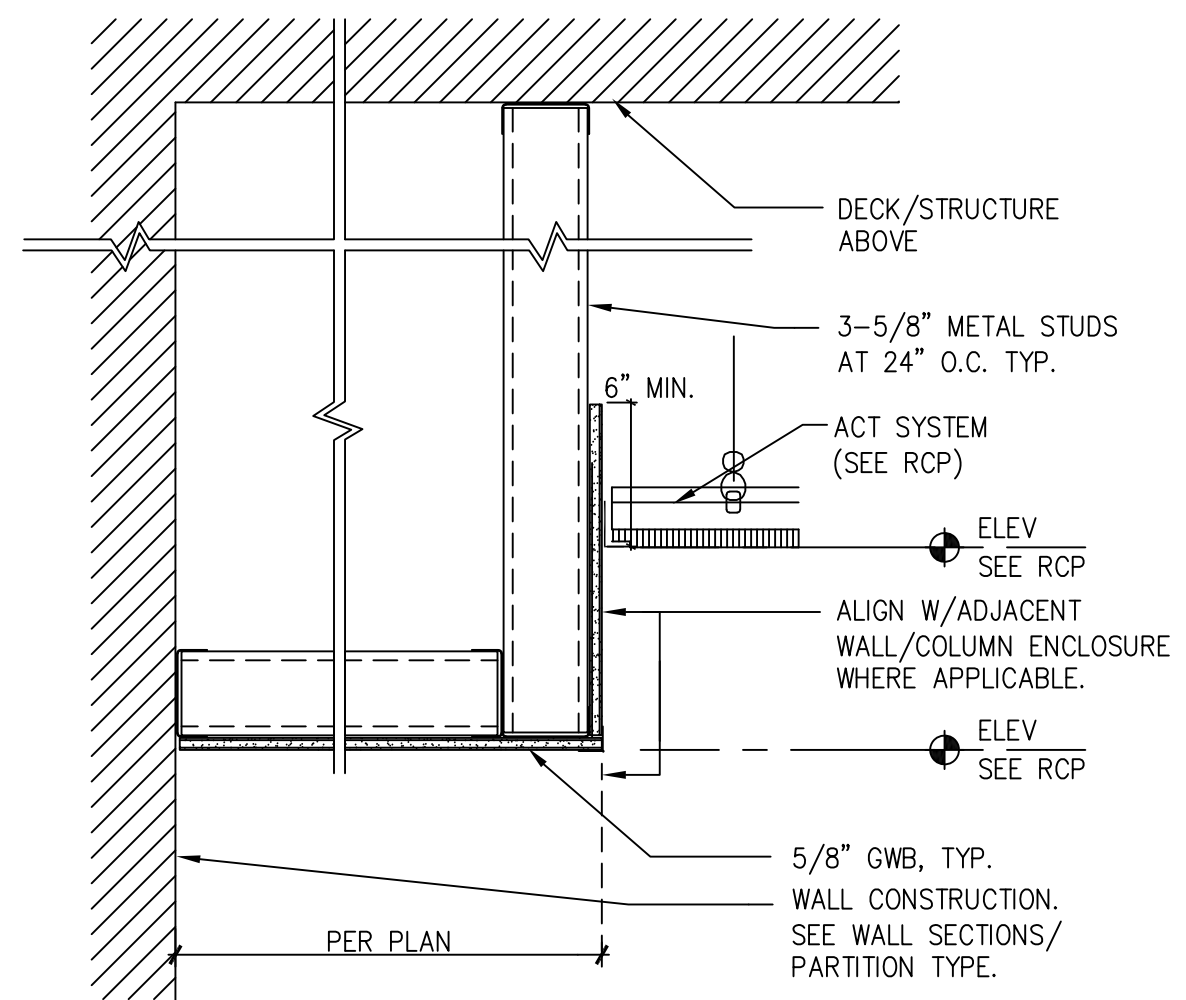
Einhorn Yaffee Prescott
 Architecture & Engineering, P.C.
 412 Broadway
 P.O. Box 617
 Albany, NY 12201-0617
 Telephone: 518.431.3300
 Fax: 518.431.3333
 eypae.com

EYP/

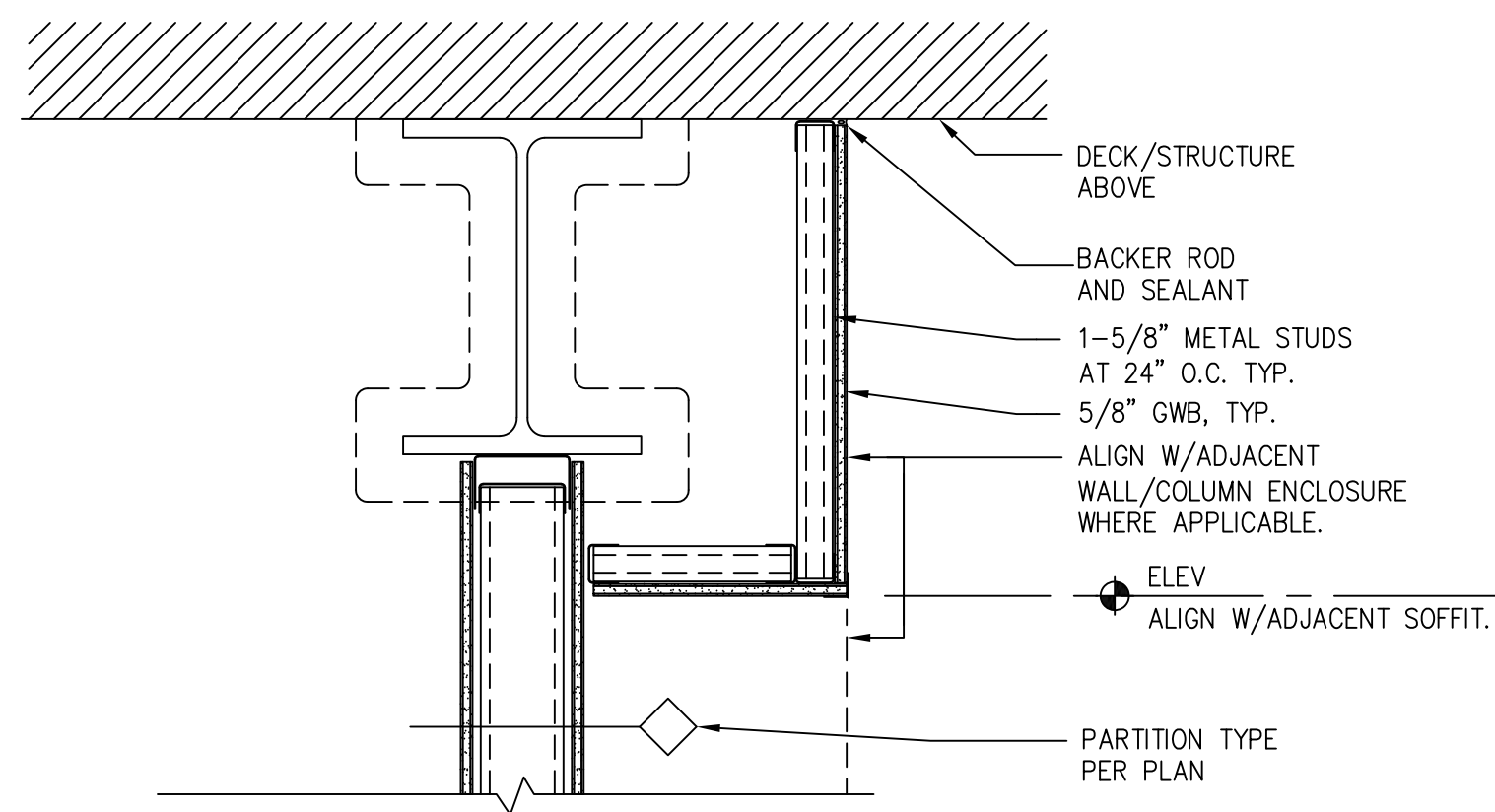
10 | SOFFIT/CLNG. DTL. 1-1/2" = 1'-0"



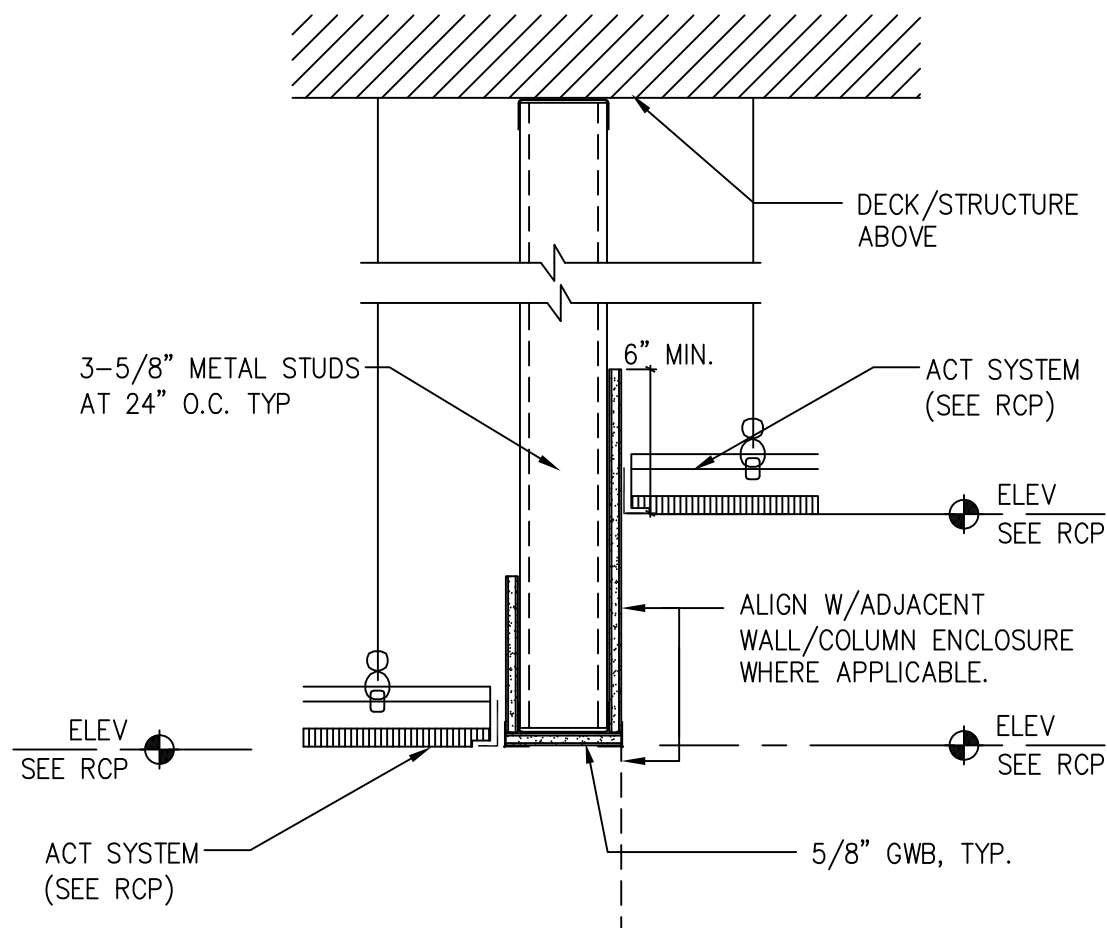
9 | SOFFIT/CLNG. DTL. 1-1/2" = 1'-0"



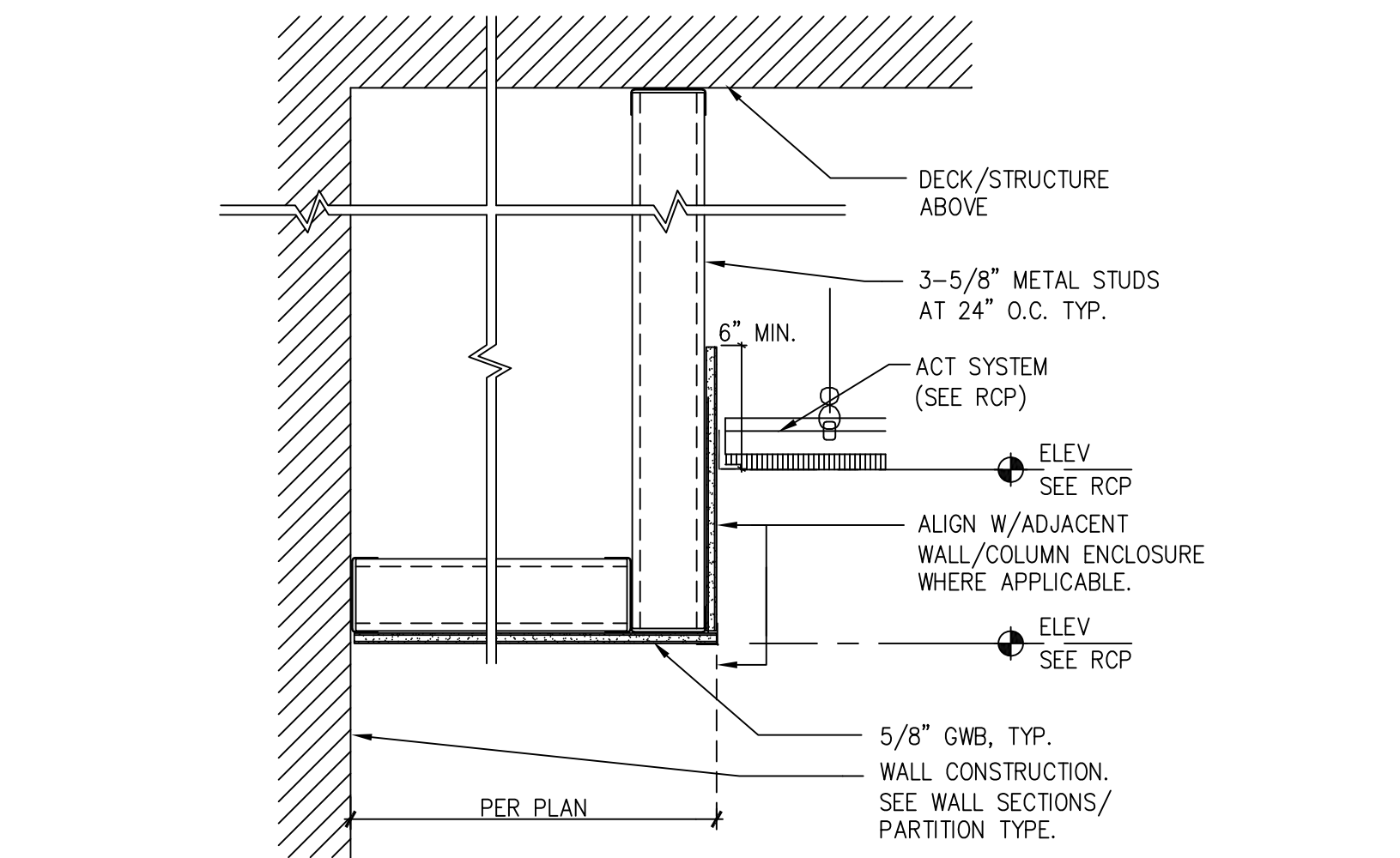
8 | SOFFIT/CLNG. DTL. 1-1/2" = 1'-0"



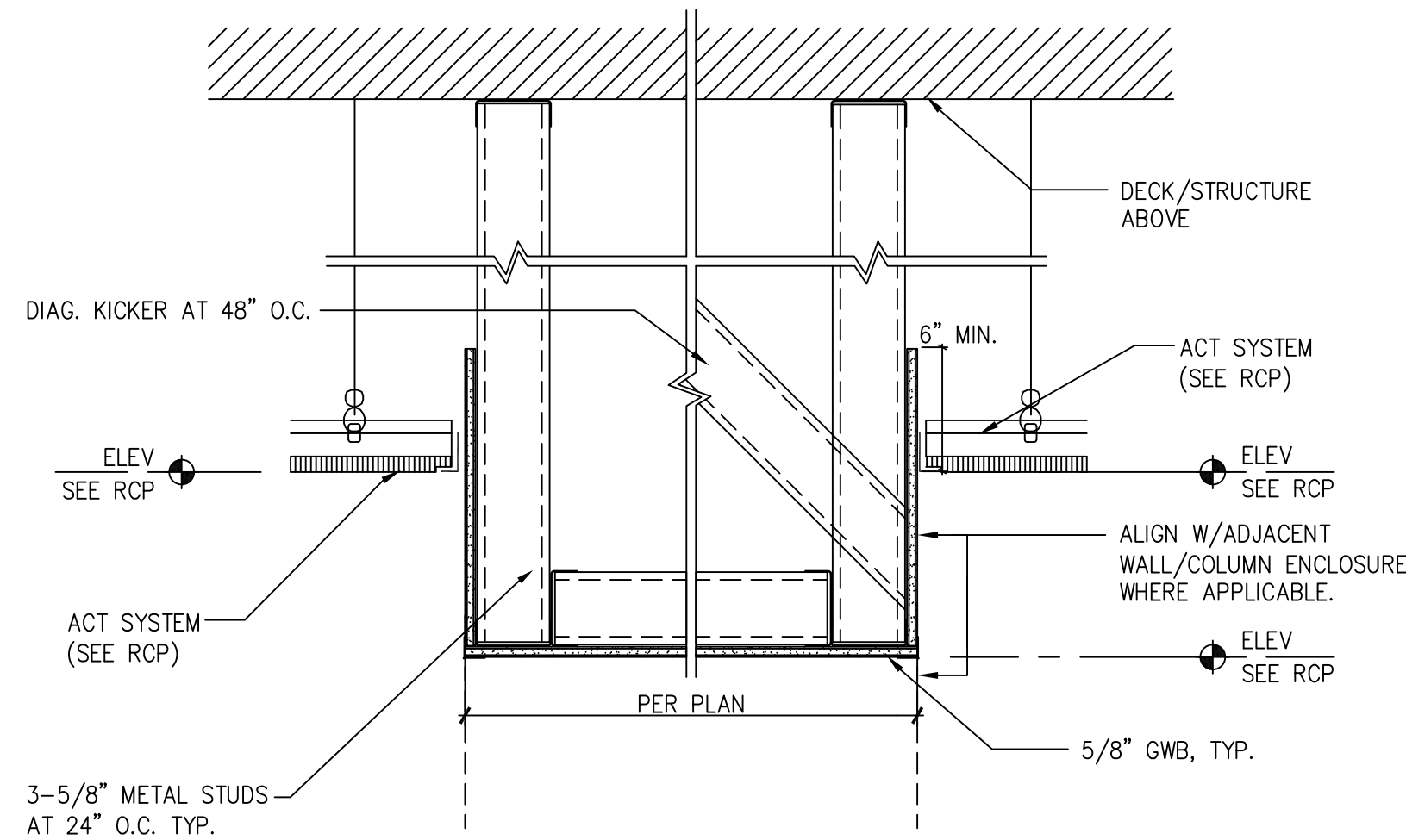
7 | SOFFIT/CLNG. DTL. 1-1/2" = 1'-0"



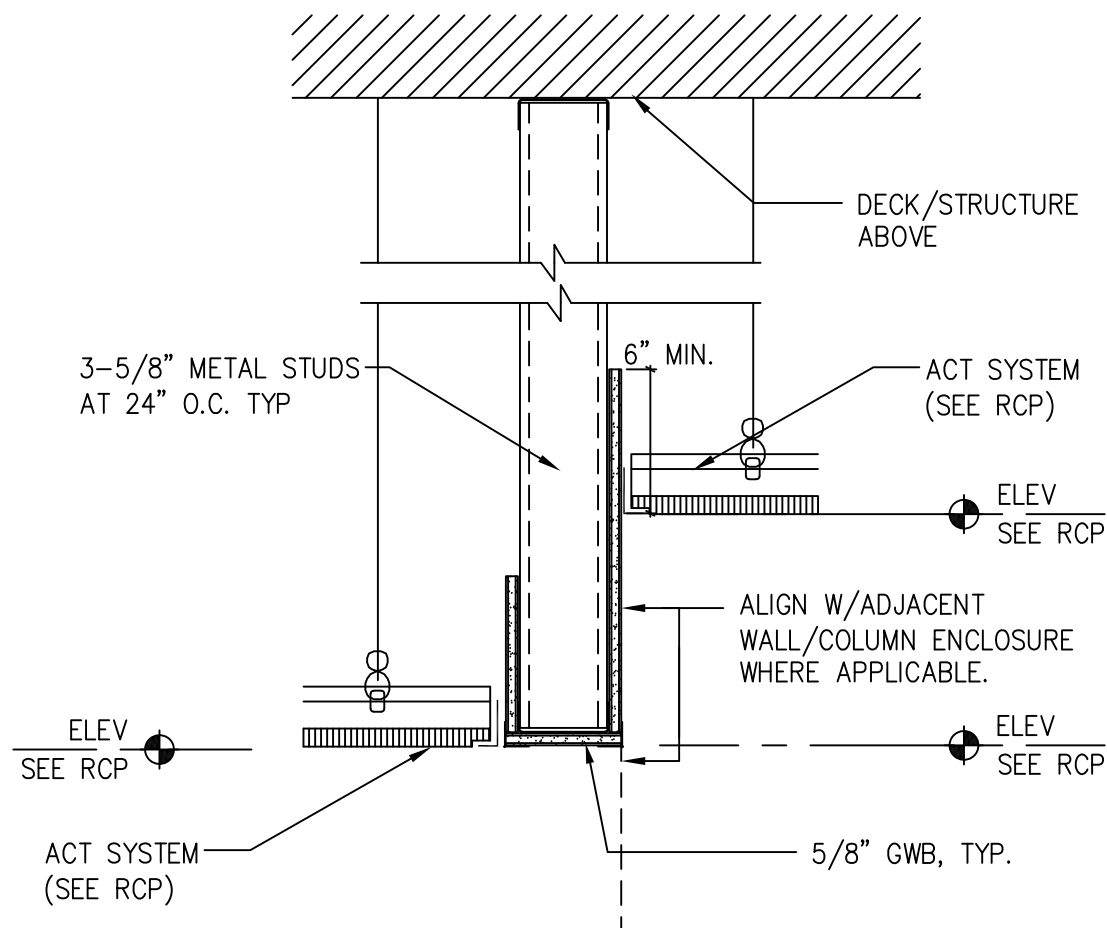
6 | SOFFIT/CLNG. DTL. 1-1/2" = 1'-0"



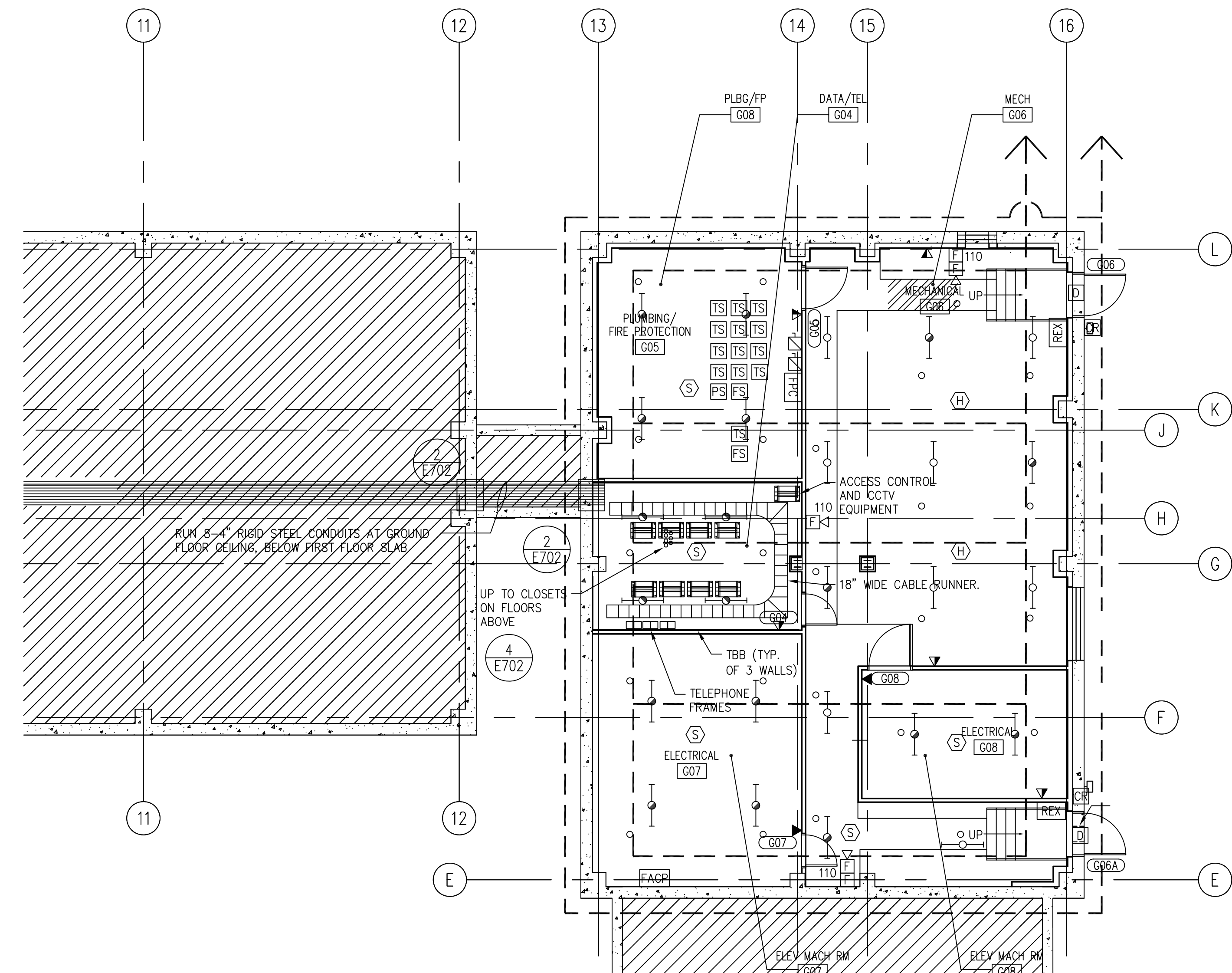
5 | SOFFIT/CLNG. DTL. 1-1/2" = 1'-0"



4 | SOFFIT/CLNG. DTL. 1-1/2" = 1'-0"



3 | SOFFIT/CLNG. DTL. 1-1/2" = 1'-0"



0'1'2' 4' 8' 16' 1/8"=1'-0"

2 | BASEMENT RCP

1/8" = 1'-0"

RCP LEGEND:

- SEE E001 FOR ADDITIONAL LEGEND INFORMATION
- EMH GWB CEILING
- CORRUGATED/PERFORATED METAL SOFFIT SYSTEM.
- 2'x4' ACOUSTICAL CEILING TILE SYSTEM
- 2'x2' ACOUSTICAL CEILING TILE SYSTEM
- 2'x2' CEILING LIGHT FIXTURE
- 2'x4' CEILING LIGHT FIXTURE
- 1'x4' CEILING LIGHT FIXTURE
- DOWNLIGHT - CENTERED IN CEILING TILE
- DIFFUSER
- CEILING RETURN
- CEILING AND EXIT LIGHT
- ARROWS INDICATE DIRECTION OF ILLUMINATION
- SHADING INDICATES SIDE OF ILLUMINATION
- CEILING AND SECURITY INTRUSION DETECTOR
- HEAT SENSOR - (CENTER IN ACT TYPICAL)
- SMOKE DETECTOR - (CENTER IN ACT TYPICAL)
- 2'x4' CEILING HEIGHT ABOVE FLOOR
- RECESSED LIGHT FIXTURE
- DIRECTIONAL LIGHT FIXTURE
- SPRINKLER HEAD - (CENTER IN ACT TYPICAL)
- WALL MTD SPRINKLER
- ACCESS DOOR (1'x1' U.N.O.)
- ELECTRICAL FIXTURE
- SIDEWALL SPRINKLER

GENERAL NOTES:

- SEE ELEC. DWGS. FOR FIXTURE COUNT
- SEE SPECS FOR SPECIFIC ACOUSTIC TILE AND GWB APPLICATIONS PER ROOM USE
- SEE ELEC. DRAWINGS FOR LIGHTING INFORMATION
- SEE STAIR DRAWINGS FOR STAIRWELL CLNG INFO.
- MECH., ELEC., & FIRE PROTECTION EQUIPMENT SHOWN FOR COORDINATION PURPOSES ONLY. EXTENT OF SAID WORK IS NOT COVERED ON THIS DRAWING.
- ALL DEVICES (LIGHTING, DIFFUSERS, ETC.) WHEN SHOWN TO BE PLACED IN ACOUSTIC CEILING TILE SYSTEM SHALL BE CENTERED IN TILES. CALL ANY CONFLICTS TO THE ATTENTION OF THE ARCHITECT PRIOR TO INSTALLATION.
- ALL FIXTURES TO BE CENTERED WITHIN ACTs TYPICAL
- AT THE FOURTH FLOOR, SEE THE THIRD FLOOR RCP FOR CORRIDOR, LOUNGE AND OTHER PUBLIC SPACES, ELEVATION INFORMATION.
- SEE AB03 FOR TYPICAL SOFFIT DETAIL REF. BUBBLES
- AT FOURTH FLOOR, PROVIDE 7/8" FURRING & 5/8" GWB TO UNDERSIDE OF LOAF TRUSS THROUGHOUT ENTIRE FLOOR AREA, INCLUDING ABOVE ACT & GWB @ LOWER HEIGHTS.

KEY NOTES:

- MECH UNIT - SEE HVAC DWGS.
- PORTLAND CEMENT PLASTER SYSTEM
- CONCRETE PLANK TO RECEIVE ACOUSTIC SPRAY TREATMENT
- EXPOSED STRUCTURE TO BE PAINTED
- PAINTED GALV. STEEL LINTEL
- PROVIDE 2HR SHAFT BOTTOM PER 4/A002
- 2" E.J. SEE 5/A416
- EXP. STRUCTURE, NO FINISH.
- PROVIDE HORIZONTAL CONSTRUCTION PER PARTITION TYPE UNDER SIDE OF STAIR.

1 | RCP LEGEND, GENERAL NOTES AND KEY NOTES

NO SCALE

Einhorn Yaffee Prescott
Architecture & Engineering, P.C.
412 Broadway
P.O. Box 617
Albany, NY 12201-0617
Telephone: 518.431.3300
Fax: 518.431.3333
eypae.com

EYP/

CONSULTANTS:

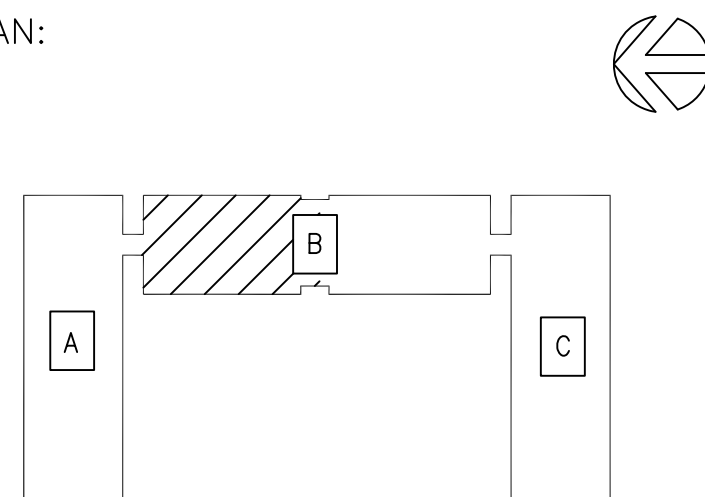
SU-081523 - Upgrades to Campus Security Project

Visual Arts Building Basement Level - North End

Reflected Ceiling Plan

FOR REFERENCE ONLY

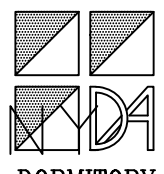
KEY PLAN:



"FINAL AS-BUILT SUBMISSION"

01/19/07

Purchase College
State University of

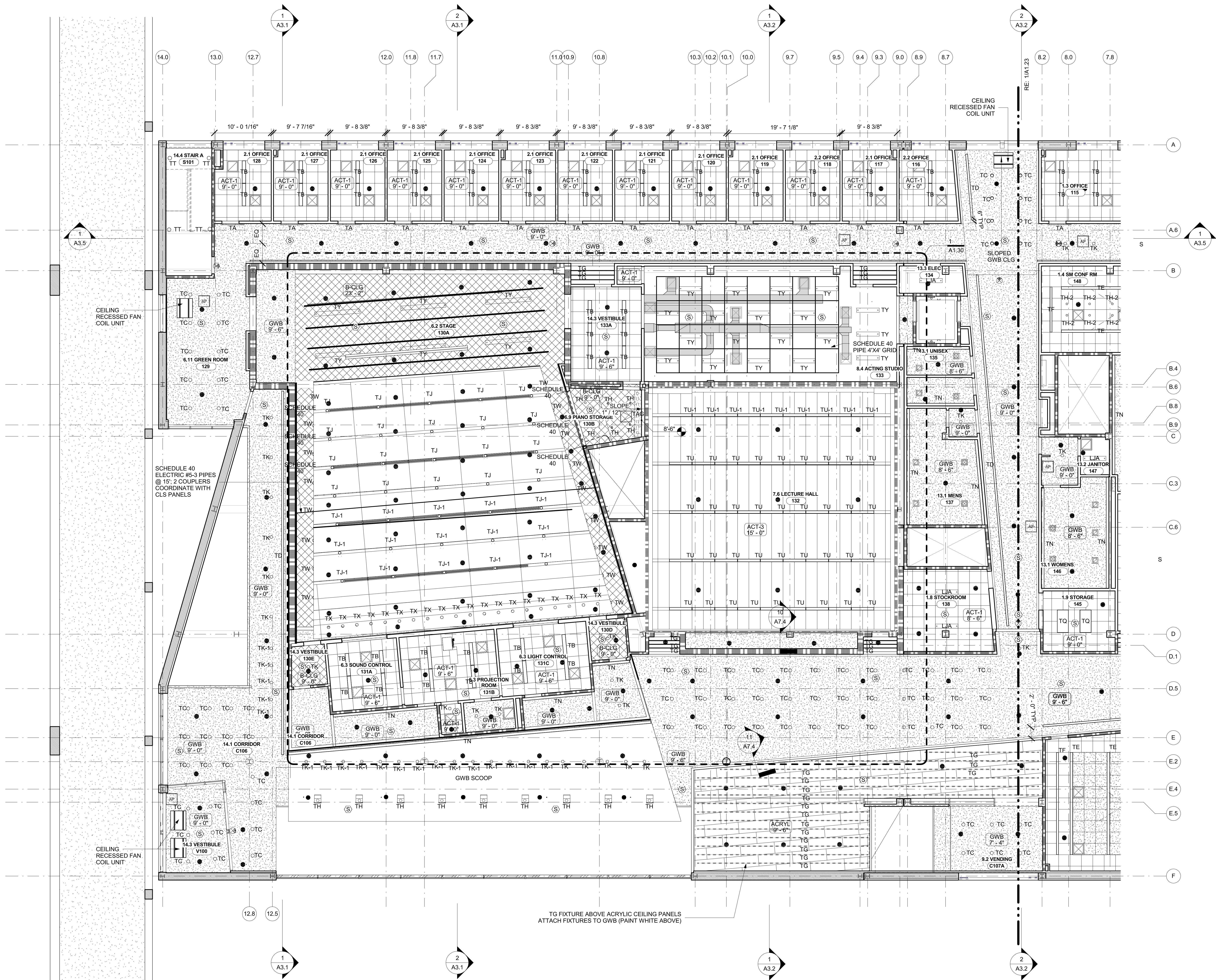


New Residence Hall
DASNY Project No. 24366
735 Anderson Hill Road, Purchase, New York 10577

DATE: 03.03.2005
SCALE: 1/8" = 1' - 0"
EYP PROJECT NUMBER: 03044.00
DESIGNED BY: DH
DRAWN BY: ERM
CHECKED BY: DLC

OVERALL BASEMENT
FLOOR REFLECTED
CEILING PLAN & DETAILS

A801
BID SET DOCUMENT



- NOTE:**
1. FOR ELECTRICAL LIGHTING INFORMATION SEE E201-E206.
 2. FOR SCHEDULE AND DESCRIPTION OF LIGHTING TYPES REFER TO TECHNICAL SPECIFICATION 265100

LEGEND

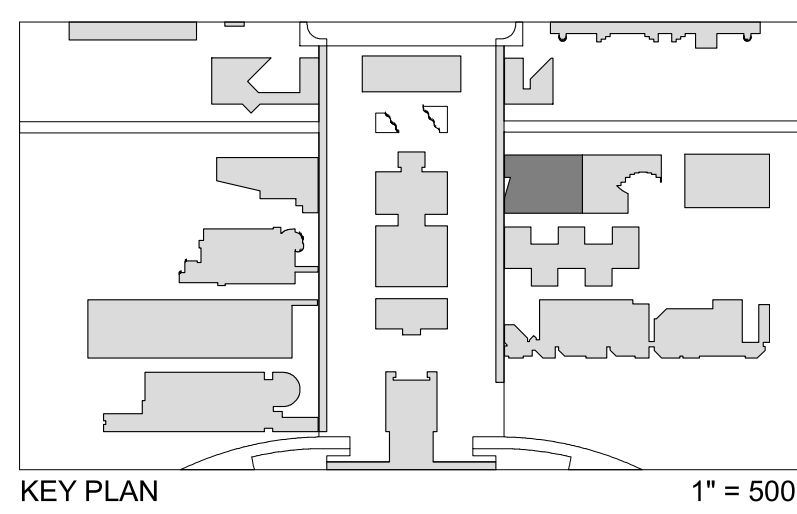
- ACT-1
- ACT-2
- ACT-3
- GWB - GYPSUM WALL BOARD
- B-CLG - BARRIER CEILING - 3 LAYERS GYPSUM WALL BOARD WITH INSULATION ABOVE
- TCP - WOOD THEATER CEILING PANEL
- HINGED ACCESS PANEL
- ACCESS PANEL
- ACRYLIC CEILING PANEL
- LINEAR DIFFUSER
- SQUARE DIFFUSER SUPPLY
- SQUARE DIFFUSER RETURN
- SPRINKLER HEAD
- DOUBLE SIDED EXIT SIGN
- SINGLE SIDED EXIT SIGN
- LIGHTING FIXTURE
- LIGHTING FIXTURE
- PROJECTOR
- SMOKE DETECTOR
- CEILING RECESSED FAN COIL UNIT

SU-081523 - Upgrades to Campus Security Project

Visual Arts Building Basement Level - North End

Reflected Ceiling Plan

FOR REFERENCE ONLY



BID DOCUMENTS
PARTIAL FIRST FLOOR RCP - NORTH

A1.22

Scale: As indicated
3 OCTOBER 2011

SUCF Project No. 29401
Humanities Building Renovation
SUNY Purchase College
735 Anderson Hill Road, Purchase, New York 10577

Kliment Halsband Architects
322 Eighth Avenue, New York, NY 10001
Robert Silman Associates, PC
88 University Place, New York, NY 10003

Lakhani & Jordan Engineers
315 Madison Avenue Suite 1001, New York, NY 10017
CHA
111 Winners Circle, Albany, NY 12205

Mathews Nielsen Landscape Architects, PC
120 Broadway Suite 1040, New York, NY 10021
Tilston Design Associates
40 Worth Street Suite 1680, New York, NY 10013

Sustainable Performance Consulting, INC
Webster Woods #206 807 Ridge Road, Webster, NY 14580
TM Technology Partners, Inc.
250 West 39th Street 5th FL, New York, NY 10018

Kirkegaard Associates
801 West Adams Street, Chicago, IL 60607
Adelaide Environmental Health Associates, Inc.
1511 Route 22 Suite C24 Brewster, NY, 10509

Argus Architecture & Preservation, P.C.
297 River Street Suite 303, Troy, NY 12180



- NOTE:**
- FOR ELECTRICAL LIGHTING INFORMATION
SEE E201-E206.
 - FOR SCHEDULE AND DESCRIPTION OF LIGHTING TYPES REFER TO
TECHNICAL SPECIFICATION 265100

LEGEND

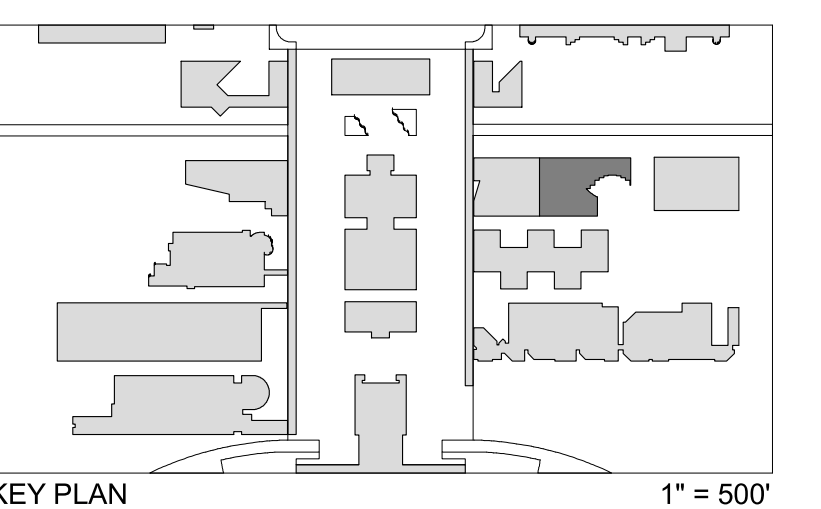
- ACT-1
- ACT-2
- ACT-3
- GWB - GYPSUM WALL BOARD
- B-CLG - BARRIER CEILING -
3 LAYERS GYPSUM WALL BOARD WITH
INSULATION ABOVE
- TCP - WOOD THEATER CEILING PANEL
- HINGED ACCESS PANEL
- ACCESS PANEL
- ACRYLIC CEILING PANEL
- LINEAR DIFFUSER
- SQUARE DIFFUSER SUPPLY
- SQUARE DIFFUSER RETURN
- SPRINKLER HEAD
- DOUBLE SIDED EXIT SIGN
- SINGLE SIDED EXIT SIGN
- LIGHTING FIXTURE
- LIGHTING FIXTURE
- PROJECTOR
- SMOKE DETECTOR
- CEILING RECESSED FAN COIL UNIT

SU-081523 - Upgrades to Campus
Security Project

Visual Arts Building Basement Level -
North End

Reflected Ceiling Plan

FOR REFERENCE ONLY



BID DOCUMENTS
**PARTIAL FIRST FLOOR RCP -
SOUTH**

A1.23

Scale: As Indicated
3 OCTOBER 2011
SUCF Project No. 29401
Humanities Building Renovation
SUNY Purchase College
735 Anderson Hill Road, Purchase, New York 10577

Kliment Halsband Architects
322 Eighth Avenue, New York, NY 10001
Robert Silman Associates, PC
86 University Place, New York, NY 10003

Lakhani & Jordan Engineers
315 Madison Avenue Suite 1001, New York, NY 10017

CHA
111 Winners Circle, Albany, NY 12205

**Mathews Nielsen Landscape
Architects, PC**
120 Broadway Suite 1040, New York, NY 10271

Tillostson Design Associates
40 Worth Street Suite 1680, New York, NY 10013

**Sustainable Performance
Consulting, INC**
Webster Woods #206 807 Ridge Road, Webster, NY 14580

TM Technology Partners, Inc.
250 West 39th Street 5th FL, New York, NY 10018

Kirkegaard Associates
801 West Adams Street, Chicago, IL 60607

**Adelaide Environmental Health
Associates, Inc.**
1511 Route 22 Suite C24 Brewster, NY, 10509

Argus Architecture & Preservation, P.C.
297 River Street Suite 303, Troy, NY 12180



1 FIRST FLOOR REFLECTED CEILING PLAN - SOUTH
1/8" = 1'-0"

NOTE:
1. FOR ELECTRICAL LIGHTING INFORMATION
SEE E201-E206.
2. FOR SCHEDULE AND DESCRIPTION OF LIGHTING TYPES REFER TO
TECHNICAL SPECIFICATION 265100

- LEGEND**
- ACT-1
 - ACT-2
 - ACT-3
 - GWB - GYPSUM WALL BOARD
 - B-CLG - BARRIER CEILING -
3 LAYERS GYPSUM WALL BOARD WITH
INSULATION ABOVE
 - TCF - WOOD THEATER CEILING PANEL
 - HINGED ACCESS PANEL
 - ACCESS PANEL
 - ACRYLIC CEILING PANEL
 - LINEAR DIFFUSER
 - SQUARE DIFFUSER SUPPLY
 - SQUARE DIFFUSER RETURN
 - SPRINKLER HEAD
 - DOUBLE SIDED EXIT SIGN
 - SINGLE SIDED EXIT SIGN
 - LIGHTING FIXTURE
 - LIGHTING FIXTURE
 - PROJECTOR
 - SMOKE DETECTOR
 - CEILING RECESSED FAN COIL UNIT

SU-081523 - Upgrades to Campus Security
Project

Visual Arts Building Basement Level -
North End

Reflected Ceiling Plan

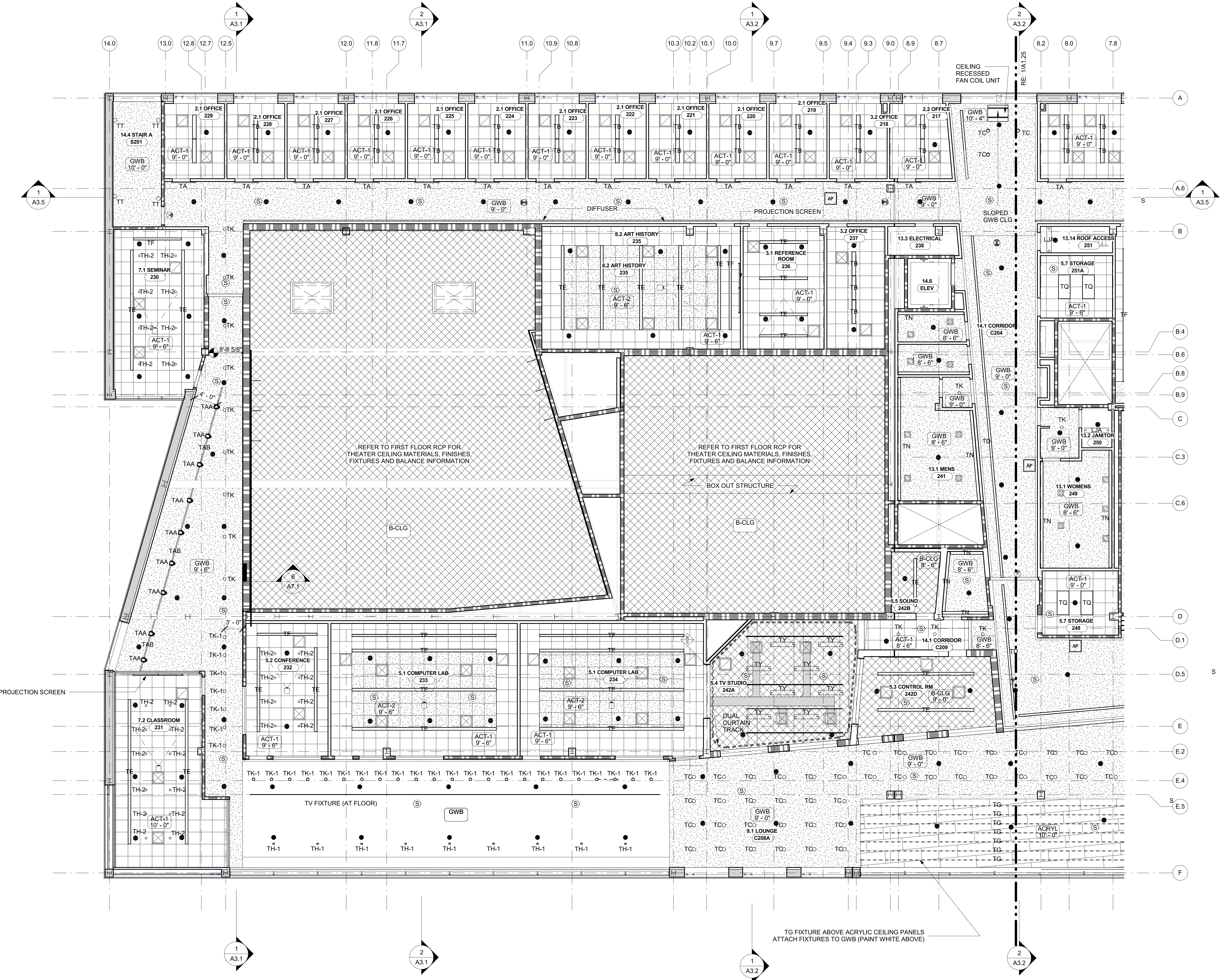
FOR REFERENCE ONLY



BID DOCUMENTS
**PARTIAL SECOND FLOOR RCP -
NORTH**

Scale: As Indicated
3 OCTOBER 2011
SUCF Project No. 29401
Humanities Building Renovation
SUNY Purchase College
735 Anderson Hill Road, Purchase, New York 10577
Kliment Halsband Architects
322 Eighth Avenue, New York, NY 10001
Robert Silman Associates, PC
85 University Place, New York, NY 10003
Lakhani & Jordan Engineers
315 Madison Avenue Suite 1001, New York, NY 10017
CHA
111 Winners Circle, Albany, NY 12205
Mathews Nielsen Landscape
Architects, PC
120 Broadway Suite 1040, New York, NY 10271
Tilloston Design Associates
40 Worth Street Suite 1680, New York, NY 10013
Sustainable Performance
Consulting, INC
Webster Woods #206 807 Ridge Road, Webster, NY 14580
TM Technology Partners, Inc.
250 West 39th Street 5th FL, New York, NY 10018
Kirkegaard Associates
801 West Adams Street, Chicago, IL 60607
Adelaide Environmental Health
Associates, Inc.
1511 Route 22 Suite C24 Brewster, NY, 10509
Argus Architecture & Preservation, P.C.
297 River Street Suite 303, Troy, NY 12180

A1.24



1 SECOND FLOOR REFLECTED CEILING PLAN - NORTH
1/8" = 1'-0"



- NOTE:**
1. FOR ELECTRICAL LIGHTING INFORMATION SEE E201-E206.
 2. FOR SCHEDULE AND DESCRIPTION OF LIGHTING TYPES REFER TO TECHNICAL SPECIFICATION 265100

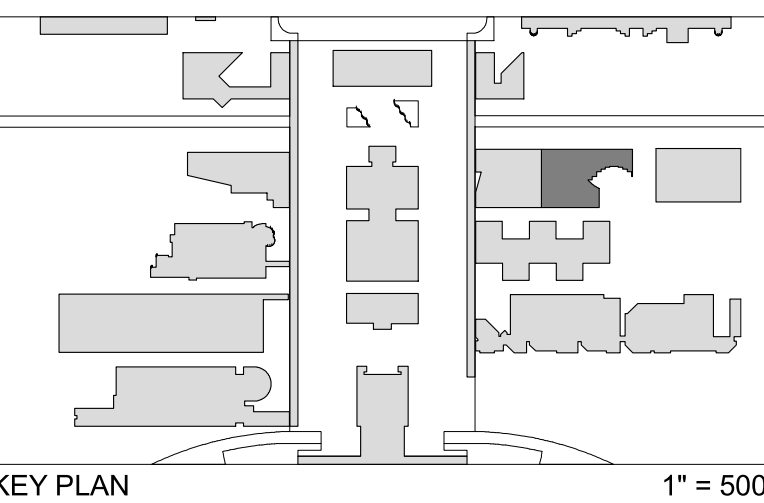
- LEGEND**
- ACT-1
 - ACT-2
 - ACT-3
 - GWB - GYPSUM WALL BOARD
 - B-CLG - BARRIER CEILING - 3 LAYERS GYPSUM WALL BOARD WITH INSULATION ABOVE
 - TCF - WOOD THEATER CEILING PANEL
 - HINGED ACCESS PANEL
 - ACCESS PANEL
 - ACRYLIC CEILING PANEL
 - LINEAR DIFFUSER
 - SQUARE DIFFUSER SUPPLY
 - SQUARE DIFFUSER RETURN
 - SPRINKLER HEAD
 - DOUBLE SIDED EXIT SIGN
 - SINGLE SIDED EXIT SIGN
 - LIGHTING FIXTURE
 - LIGHTING FIXTURE
 - PROJECTOR
 - SMOKE DETECTOR
 - CEILING RECESSED FAN COIL UNIT

SU-081523 - Upgrades to Campus Security Project

Visual Arts Building Basement Level - North End

Reflected Ceiling Plan

FOR REFERENCE ONLY



BID DOCUMENTS
PARTIAL SECOND FLOOR RCP - SOUTH

A1.25

Scale: As indicated
3 OCTOBER 2011

SUCF Project No. 29401
Humanities Building Renovation
SUNY Purchase College
735 Anderson Hill Road, Purchase, New York 10577

Kliment Halsband Architects
322 Eighth Avenue, New York, NY 10001
Robert Silman Associates, PC
88 University Place, New York, NY 10003

Lakhani & Jordan Engineers
315 Madison Avenue Suite 1001, New York, NY 10017

CHA
111 Winners Circle, Albany, NY 12205

Mathews Nielsen Landscape Architects, PC
120 Broadway Suite 1040, New York, NY 10021

Tilloston Design Associates
40 Worth Street Suite 1680, New York, NY 10013

Sustainable Performance Consulting, INC
Webster Woods #206 807 Ridge Road, Webster, NY 14580

TM Technology Partners, Inc.
250 West 39th Street 9th FL, New York, NY, 10018

Kirkegaard Associates
801 West Adams Street, Chicago, IL, 60607

Adelaide Environmental Health Associates, Inc.
1511 Route 22 Suite C24 Brewster, NY, 10509

Argus Architecture & Preservation, P.C.
297 River Street Suite 303, Troy, NY 12180

- NOTE:**
- FOR ELECTRICAL LIGHTING INFORMATION
SEE E201-E206.
 - FOR SCHEDULE AND DESCRIPTION OF LIGHTING TYPES REFER TO
TECHNICAL SPECIFICATION 265100

LEGEND

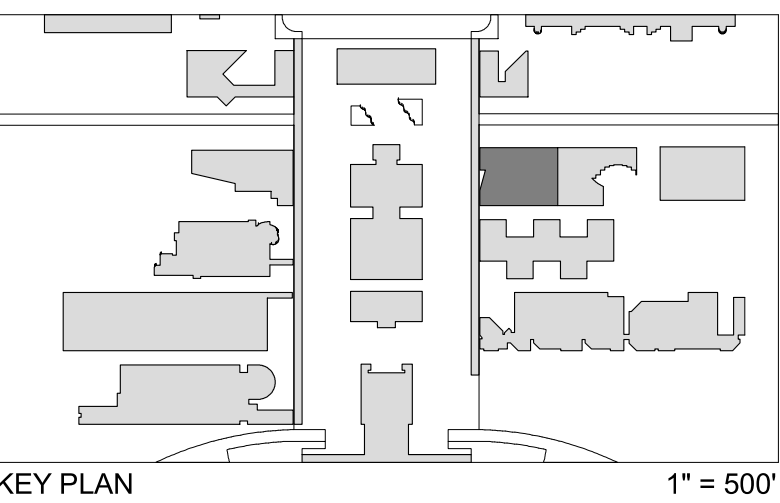
- ACT-1
- ACT-2
- ACT-3
- GWB - GYPSUM WALL BOARD
- B-CLG - BARRIER CEILING -
3 LAYERS GYPSUM WALL BOARD WITH
INSULATION ABOVE
- TCP - WOOD THEATER CEILING PANEL
- HINGED ACCESS PANEL
- ACCESS PANEL
- ACRYLIC CEILING PANEL
- LINEAR DIFFUSER
- SQUARE DIFFUSER SUPPLY
- SQUARE DIFFUSER RETURN
- SPRINKLER HEAD
- DOUBLE SIDED EXIT SIGN
- SINGLE SIDED EXIT SIGN
- LIGHTING FIXTURE
- LIGHTING FIXTURE
- PROJECTOR
- SMOKE DETECTOR
- CEILING RECESSED FAN COIL UNIT

SU-081523 - Upgrades to Campus
Security Project

Visual Arts Building Basement Level -
North End

Reflected Ceiling Plan

FOR REFERENCE ONLY



BID DOCUMENTS
PARTIAL BASEMENT RCP - NORTH

A1.20

Scale: As indicated
3 OCTOBER 2011

SUCF Project No. 29401
Humanities Building Renovation
SUNY Purchase College
735 Anderson Hill Road, Purchase, New York 10577

Kliment Halsband Architects
322 Eighth Avenue, New York, NY 10001
Robert Silman Associates, PC
88 University Place, New York, NY 10003

Lakhani & Jordan Engineers
315 Madison Avenue Suite 1001, New York, NY 10017

CHA
111 Winners Circle, Albany, NY 12205

Mathews Nielsen Landscape
Architects, PC
120 Broadway Suite 1040, New York, NY 10021

Tilloston Design Associates
40 Worth Street Suite 1680, New York, NY 10013

Sustainable Performance
Consulting, INC
Webster Woods #206 807 Ridge Road, Webster, NY 14580

TM Technology Partners, Inc.
250 West 39th Street 5th FL, New York, NY, 10018

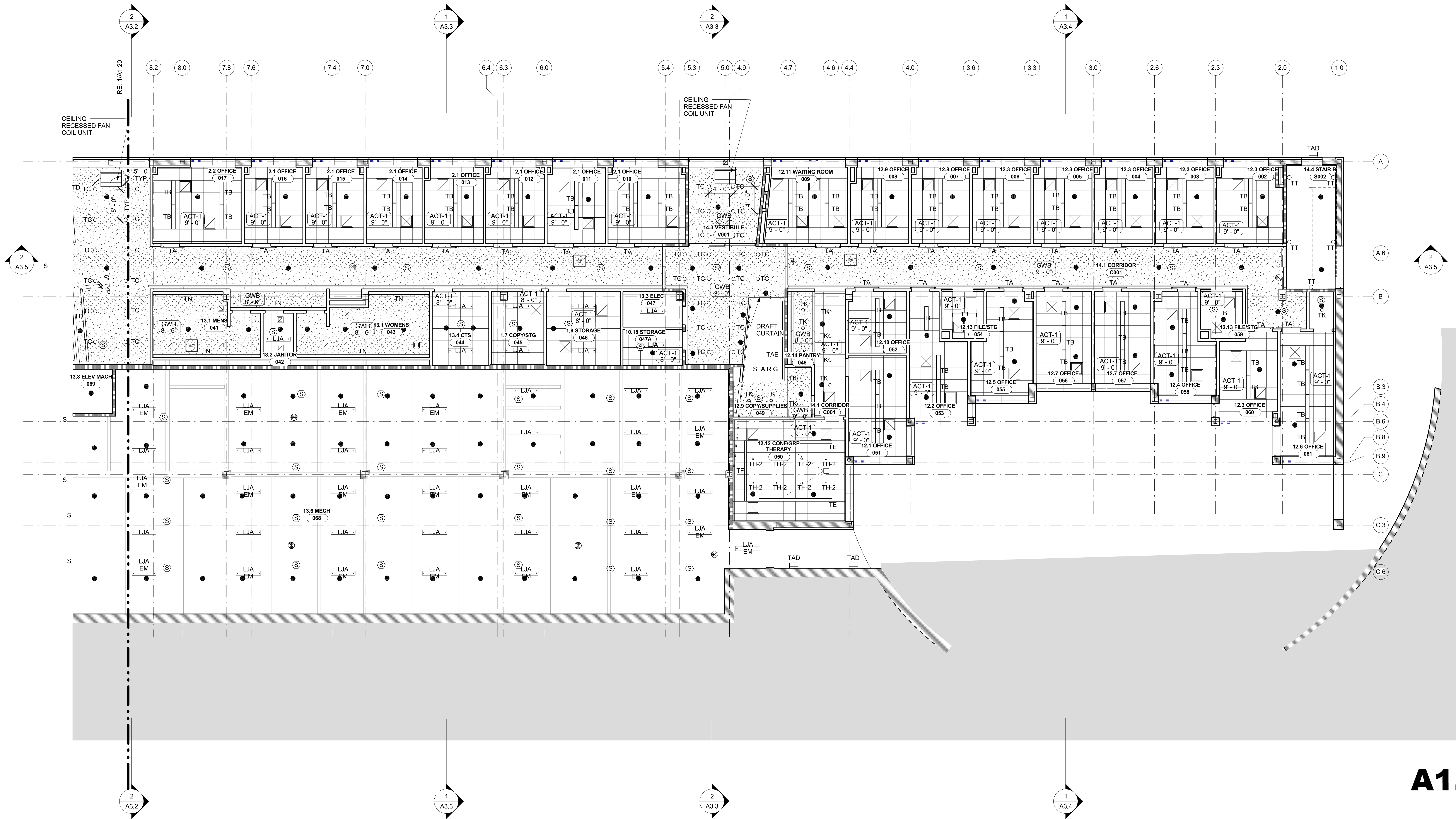
Kirkegaard Associates
801 West Adams Street, Chicago, IL, 60607

Adelaide Environmental Health
Associates, Inc.
1511 Route 22 Suite C24 Brewster, NY, 10509

Argus Architecture & Preservation, P.C.
297 River Street Suite 303, Troy, NY 12180



1 BASEMENT REFLECTED CEILING PLAN - NORTH
1/8" = 1'-0"



1 BASEMENT REFLECTED CEILING PLAN - SOUTH
1/8" = 1'-0"

- NOTE:**
- FOR ELECTRICAL LIGHTING INFORMATION SEE E201-E206.
 - FOR SCHEDULE AND DESCRIPTION OF LIGHTING TYPES REFER TO TECHNICAL SPECIFICATION 265100

LEGEND

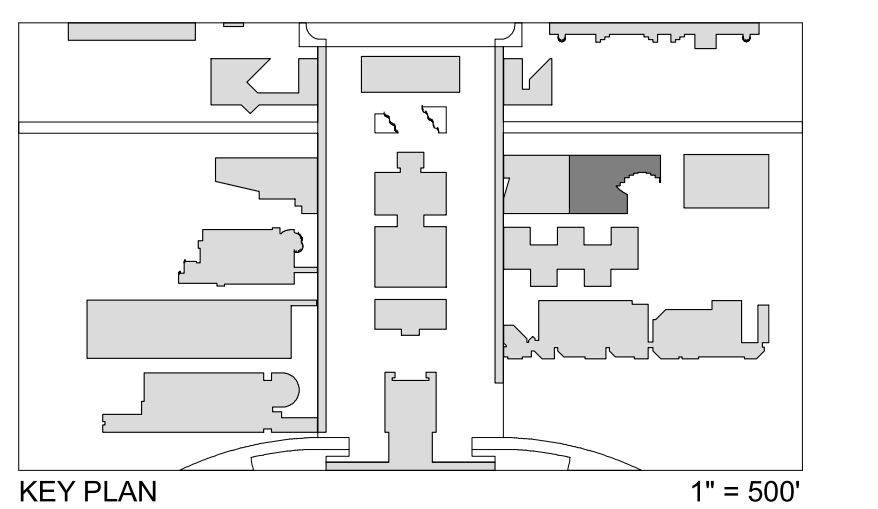
- ACT-1
- ACT-2
- ACT-3
- GWB - GYPSUM WALL BOARD
- B-CLG - BARRIER CEILING - 3 LAYERS GYPSUM WALL BOARD WITH INSULATION ABOVE
- TCP - WOOD THEATER CEILING PANEL
- HINGED ACCESS PANEL
- ACCESS PANEL
- ACRYLIC CEILING PANEL
- LINEAR DIFFUSER
- SQUARE DIFFUSER SUPPLY
- SQUARE DIFFUSER RETURN
- SPRINKLER HEAD
- DOUBLE SIDED EXIT SIGN
- SINGLE SIDED EXIT SIGN
- LIGHTING FIXTURE
- LIGHTING FIXTURE
- PROJECTOR
- SMOKE DETECTOR
- CEILING RECESSED FAN COIL UNIT

SU-081523 - Upgrades to Campus Security Project

Visual Arts Building Basement Level - North End

Reflected Ceiling Plan

FOR REFERENCE ONLY



BID DOCUMENTS
PARTIAL BASEMENT RCP - SOUTH

A1.21

Scale: As indicated
3 OCTOBER 2011

SUCF Project No. 29401
Humanities Building Renovation
SUNY Purchase College
735 Anderson Hill Road, Purchase, New York 10577

Kliment Halsband Architects
322 Eighth Avenue, New York, NY 10001
Robert Silman Associates, PC
88 University Place, New York, NY 10003
Lakhani & Jordan Engineers
315 Madison Avenue Suite 1001, New York, NY 10017

CHA
111 Winners Circle, Albany, NY 12205
Mathews Nielsen Landscape Architects, PC
120 Broadway Suite 1040, New York, NY 10021
Tilloston Design Associates
40 Worth Street Suite 1680, New York, NY 10013

Sustainable Performance Consulting, INC
Webster Woods #206 807 Ridge Road, Webster, NY 14580
TM Technology Partners, Inc.
250 West 39th Street 5th FL, New York, NY, 10018

Kirkegaard Associates
801 West Adams Street, Chicago, IL, 60607
Adelaide Environmental Health Associates, Inc.
1511 Route 22 Suite C24 Brewster, NY, 10509
Argus Architecture & Preservation, P.C.
297 River Street Suite 303, Troy, NY 12180

