
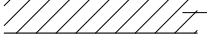
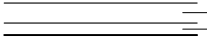





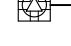




SYMBOLS

-  SECTION OR ELEVATION DESIGNATION
REFER TO PAGE
-  EXISTING BUILDING DEMISING WALL
-  EXISTING PARTITION TO REMAIN
-  NEW FURRING AND GYP. BOARD
-  DETAIL DESIGNATION
REFER TO PAGE
- KINETICS KIP PAD
-  WIRE TROUGH IN FLOOR SYSTEM
-  REMOVABLE COVER OVER
WIRE TROUGH IN FLOOR SYSTEM
-  OPEN UNCOVERED AREA OF
WIRE TROUGH
-  FLR. MTD QUAD IG RECEPTACLE
SEE ELECTRICAL PLAN
- INDICATES WIRE RUN DIRECTION
-  I.G. GROUND BUSS BOX.
SEE ELECTRICAL PLAN
-  PIPE (EMT OR PVC) FROM FLOOR
TROUGH SYSTEM. SEE NOTES.

Revisions

REVISION #	DATE	REVISION	APPROVED
01	07/13/21	100% CD	GM
02	11/19/21	Addendum 3	GM

These Drawings are the Property & Copyright of

**FRANCIS
MANZELLA
DESIGN
LIMITED**

914.248.7680 Voice
914.248.7780 Fax
fmdesign@fmdesign.com
www.FMDesign.com

961 Route 6
Mahopac NY, 10541

Acoustic Consulting
and Studio Design

ARCHITECT

**LYNN FRITZLEN
ARCHITECT**

Office: The Yard 33 W 60th St. 2nd Floor
New York, NY 10023
Mailing: 140 Riverside Drive Suite 6E,
New York, NY 10024

PROJECT

Purchase College
Studio A
Renovations

Purchase, NY

DRAWING NAME

AUDIO TROUGH & PIPING PLAN

SEAL & SIGNATURE

SCALE **1/4"=1'-0"**

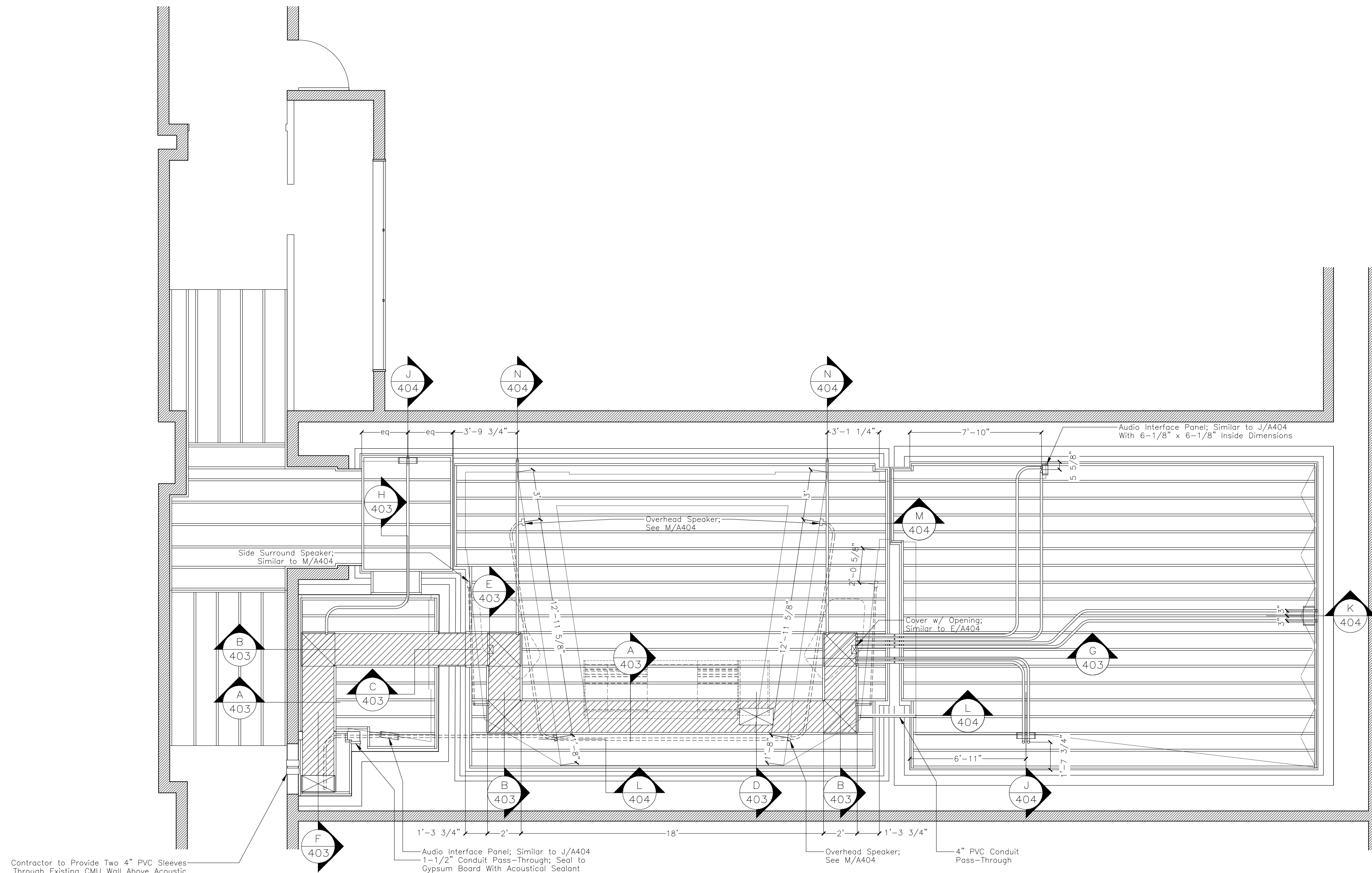
DATE **11/19/2021**

CAD FILE#

DRAWING NUMBER

A-103.00

SHEET



SYMBOLS

	STANDARD DUPLEX RECEPTACLE
	GROUND FAULT INDICATING DUPLEX RECEPTACLE
	ISOLATED GROUND DUPLEX RECEPTACLE
	ISOLATED GROUND L5-20 TWISTLOCK RECEPTACLE
	ISOLATED GROUND L5-20 TWISTLOCK RECEPTACLE MOUNTED OVERHEAD IN CEILING
	30AMP ISOLATED GROUND CIRCUIT, USE #10 WIRE AND 30AMP BREAKER AT PANEL.
	ISOLATED GROUND QUAD RECEPTACLE
	FLOOR MTD ISOLATED GROUND QUAD RECEPT.
	DIRECTION OF WIRE RUN TO RECEPT.
	GROUND J-BOX
	TELCO/DATA JACK NUMBER OF CAT6 WIRES TO EACH
	HOMERUN CIRCUITING
	CKT X — CIRCUIT DESIGNATION

TECH POWER PANEL TPA									
SERVICE	PHASE	POLES	WIRES	SIZE	ISOLATED GROUND	BALANCED POWER			
120/208V	3	3	5	100A	YES	NO			
CKT #	DESIGNATION	BREAKER TRIP POLE VOLT	KVA LOAD	WIRE SIZE	CKT #	DESIGNATION	BREAKER TRIP POLE VOLT	KVA LOAD	WIRE SIZE
TPA-1	MON/SUB LEFT	20A 1 120 1.1	#12 A	TPA-2	MON STR/DISPLAY	20A 1 120 0.8	#12		
TPA-3	MON/SUB RIGHT	20A 1 120 1.1	#12 B	TPA-4	CREDENZA LEFT	20A 1 120 0.8	#12		
TPA-5	CREDENZA RIGHT	20A 1 120 0.8	#12 C	TPA-6	CONTROL RM CONV	20A 1 120 0.3	#12		
TPA-7	SDUND LOCK/ISO	20A 1 120 0.3	#12 A	TPA-8	ISO BOOTH	20A 1 120 0.3	#12		
TPA-9	LIVE RM CONV 2	20A 1 120 0.3	#12 B	TPA-10	LIVE RM CONV 2	20A 1 120 0.3	#12		
TPA-11	LIVE RM CONV 3	20A 1 120 0.3	#12 C	TPA-12	LIVE RM CONV 4	20A 1 120 0.3	#12		
TPA-13	EQUIP RACK 1	20A 1 120 1.7	#12 A	TPA-14	--spare--	20A 1 120			
TPA-15	--spare--	20A 1 120		TPA-16	EQUIP RACK 2	20A 1 120 1.7	#12		
TPA-17	EQUIP RACK 3	20A 1 120 1.3	#12 C	TPA-18	EQUIP RACK 4	20A 1 120 1.3	#12		
TPA-19				TPA-20					
TPA-21				TPA-22					
TPA-23				TPA-24					
TPA-25				TPA-26					
TPA-27				TPA-28					
TPA-29				TPA-30					

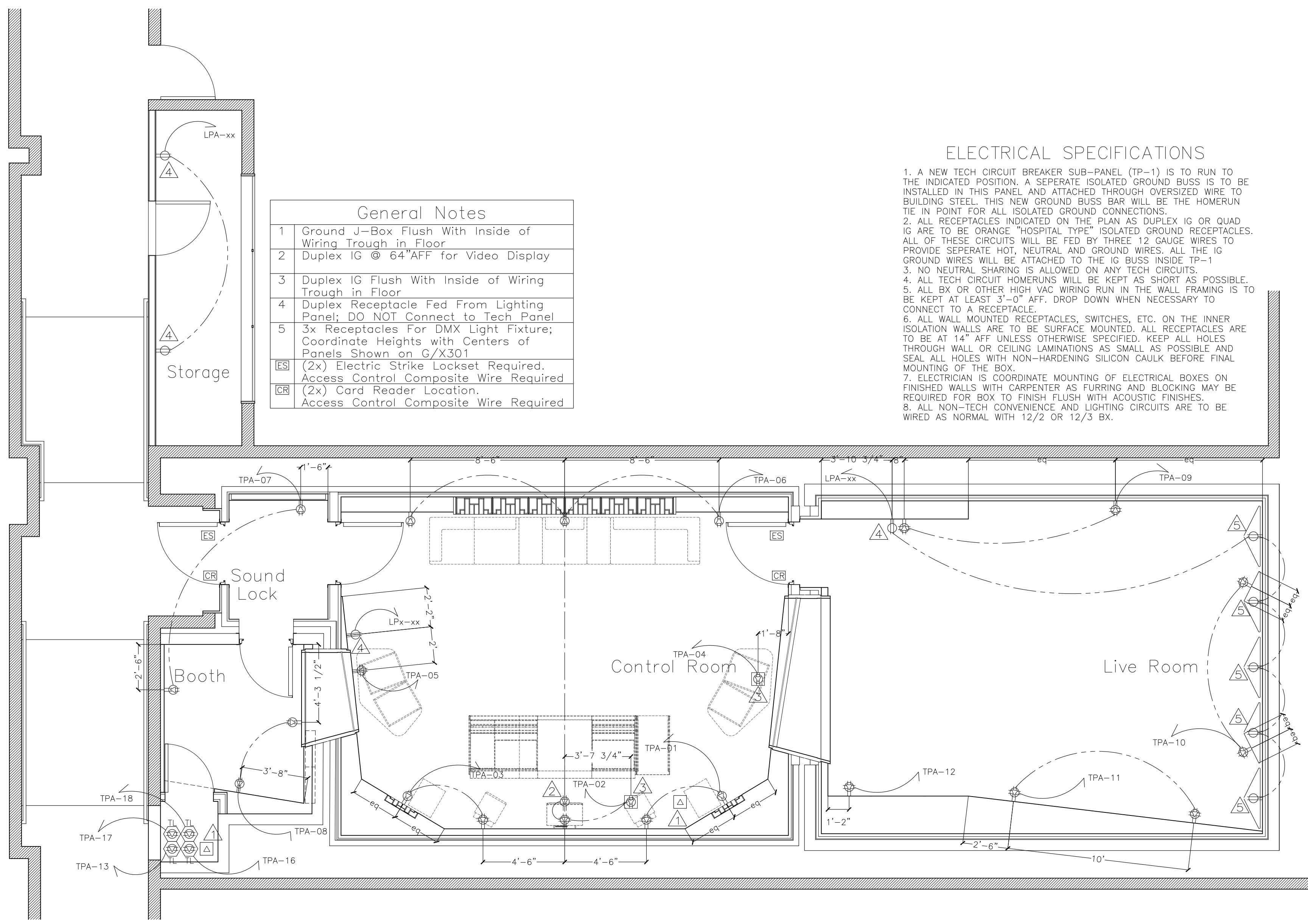
A = 4.2 KVA B = 4.2 KVA C = 4.3 KVA TOTAL KVA FOR PANEL = 12.7 KVA

ELECTRICAL SPECIFICATIONS

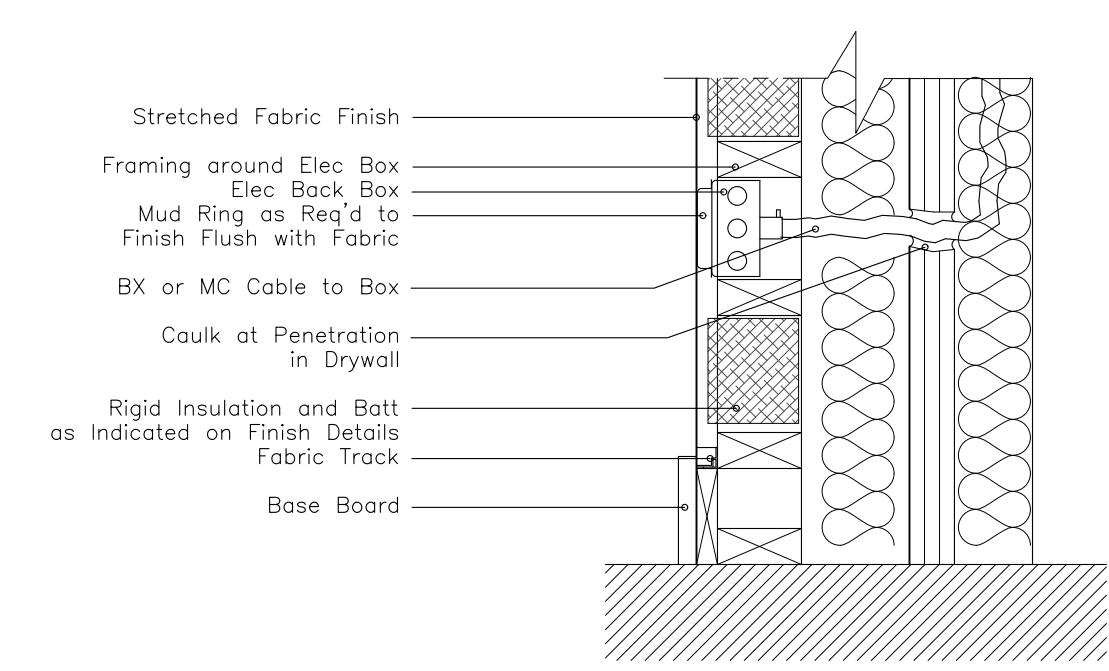
1. A NEW TECH CIRCUIT BREAKER SUB-PANEL (TP-1) IS TO RUN TO THE INDICATED POSITION. A SEPERATE ISOLATED GROUND BUSS IS TO BE INSTALLED IN THIS PANEL AND ATTACHED THROUGH OVERSIZED WIRE TO BUILDING STEEL. THIS NEW GROUND BUSS BAR WILL BE THE HOMERUN TIE IN POINT FOR ALL ISOLATED GROUND CONNECTIONS.
2. ALL RECEPTACLES INDICATED ON THE PLAN AS DUPLEX IG OR QUAD IG ARE TO BE ORANGE "HOSPITAL TYPE" ISOLATED GROUND RECEPTACLES. ALL OF THESE CIRCUITS WILL BE FED BY THREE 12 GAUGE WIRES TO PROVIDE SEPERATE HOT, NEUTRAL AND GROUND WIRES. ALL THE IG GROUND WIRES WILL BE ATTACHED TO THE IG BUSS INSIDE TP-1
3. NO NEUTRAL SHARING IS ALLOWED ON ANY TECH CIRCUITS.
4. ALL TECH CIRCUIT HOMERUNS WILL BE KEPT AS SHORT AS POSSIBLE.
5. ALL BX OR OTHER HIGH VAC WIRING RUN IN THE WALL FRAMING IS TO BE KEPT AT LEAST 3'-0" AFF. DROP DOWN WHEN NECESSARY TO CONNECT TO A RECEPTACLE.
6. ALL WALL MOUNTED RECEPTACLES, SWITCHES, ETC. ON THE INNER ISOLATION WALLS ARE TO BE SURFACE MOUNTED. ALL RECEPTACLES ARE TO BE AT 14" AFF UNLESS OTHERWISE SPECIFIED. KEEP ALL HOLES THROUGH WALL OR CEILING LAMINATIONS AS SMALL AS POSSIBLE AND SEAL ALL HOLES WITH NON-HARDENING SILICON CAULK BEFORE FINAL MOUNTING OF THE BOX.
7. ELECTRICIAN IS COORDINATE MOUNTING OF ELECTRICAL BOXES ON FINISHED WALLS WITH CARPENTER AS FURRING AND BLOCKING MAY BE REQUIRED FOR BOX TO FINISH FLUSH WITH ACOUSTIC FINISHES.
8. ALL NON-TECH CONVENIENCE AND LIGHTING CIRCUITS ARE TO BE WIRED AS NORMAL WITH 12/2 OR 12/3 BX.

General Notes

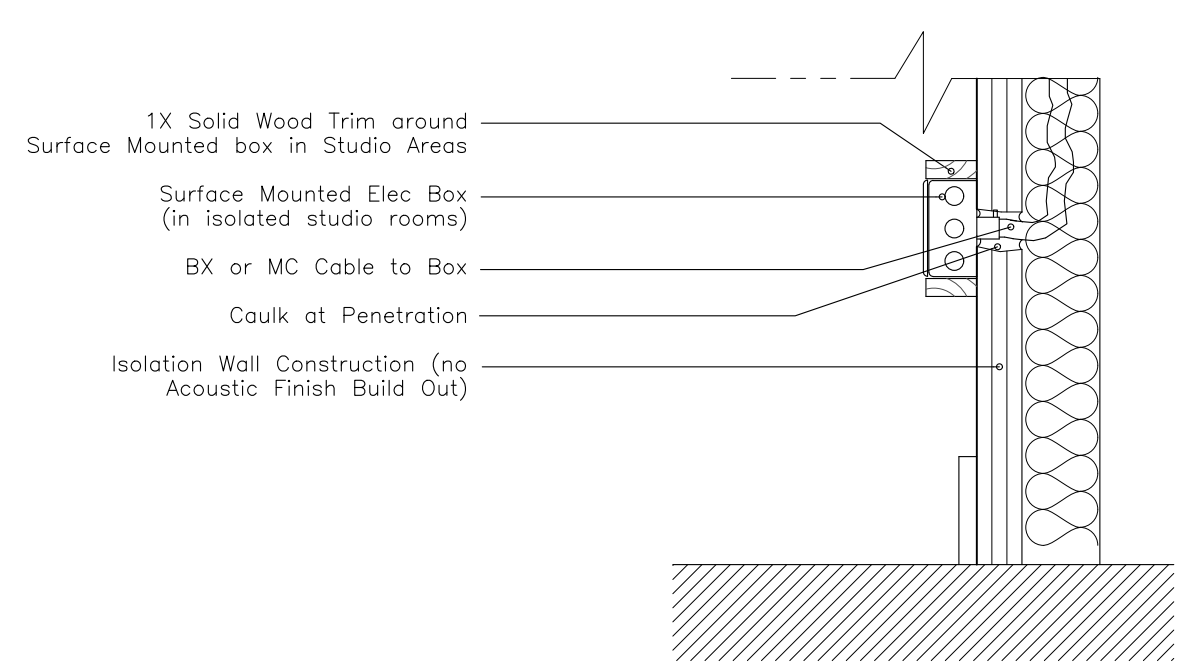
1. Ground J-Box Flush With Inside of Wiring Trough in Floor
 2. Duplex IG @ 64" AFF for Video Display
 3. Duplex IG Flush With Inside of Wiring Trough in Floor
 4. Duplex Receptacle Fed From Lighting Panel; DO NOT Connect to Tech Panel
 5. 3x Receptacles For DMX Light Fixture; Coordinate Heights with Centers of Panels Shown on G/X301
- ES (2x) Electric Strike Lockset Required. Access Control Composite Wire Required
- CR (2x) Card Reader Location. Access Control Composite Wire Required



ELECTRICAL RECEPTACLE IN FABRIC FINISH WALL
SCALE: 1 1/2" = 1'-0"



SURFACE MOUNTED ELECTRICAL RECEPTACLE
SCALE: 1 1/2" = 1'-0"



These Drawings are the Property & Copyright of

FRANCIS MANZELLA DESIGN LIMITED
 914.248.7680 Voice
 914.248.7780 Fax
 fmdesign@fmdesign.com
 www.FMDesign.com
 961 Route 6
 Mahopac NY, 10541

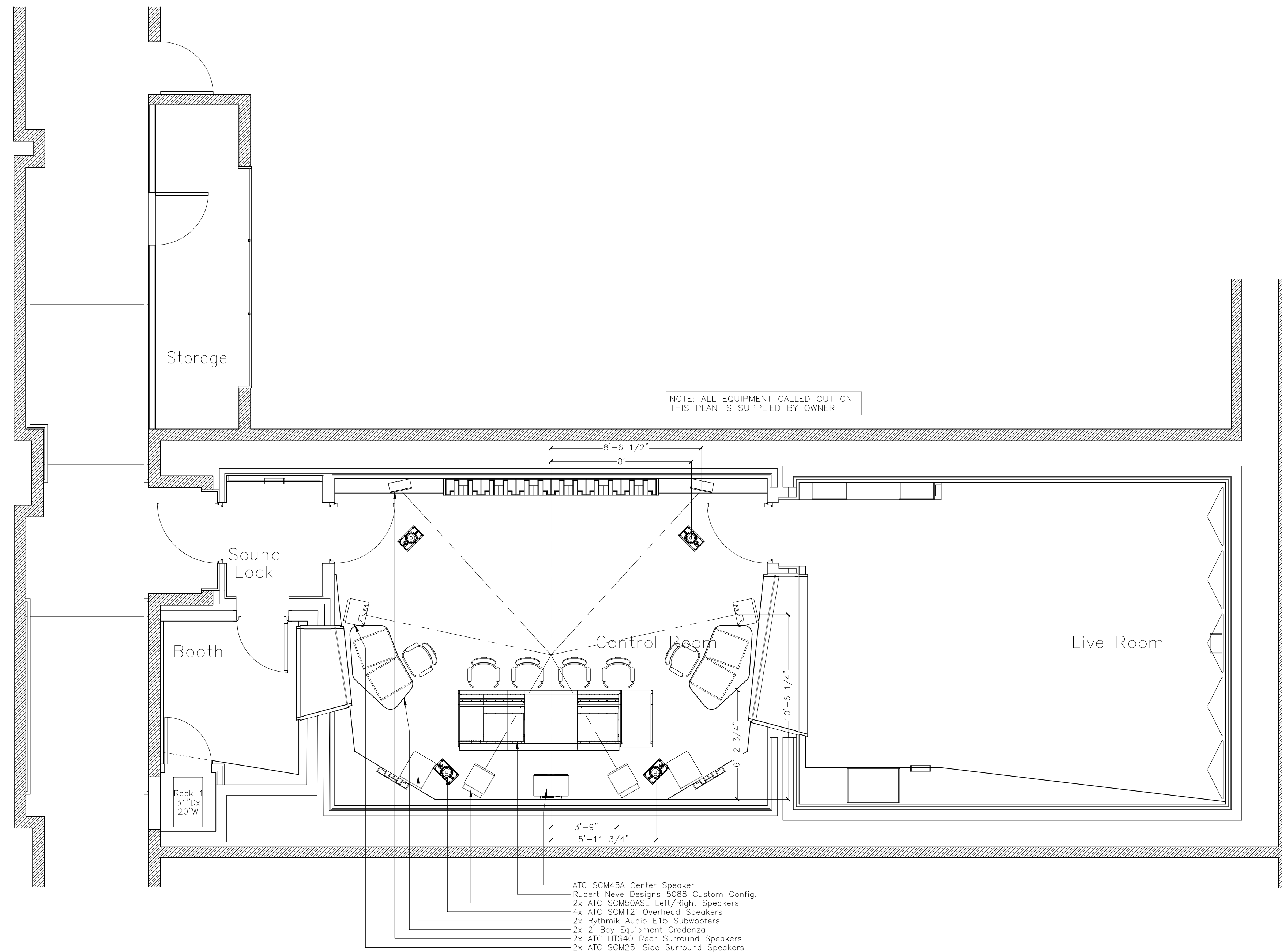
Acoustic Consulting and Studio Design

ARCHITECT
LYNN FRITZLEN ARCHITECT
 Office: The Yard 33 W 60th St. 2nd Floor
 New York, NY 10023
 Mailing: 140 Riverside Drive Suite 6E,
 New York, NY 10024

PROJECT
Purchase College Studio A Renovations
 Purchase, NY

DRAWING NAME
ELECTRICAL PLAN

SCALE: **1/4"=1'-0"**
 DATE: **11/19/2021**
 CAD FILE#
 DRAWING NUMBER
A-106.00
 SHEET



SYMBOLS

Revisions

REVISION #	DATE	REVISION	APPROVED
01	07/13/21	100% CD	GM
02	11/19/21	Addendum 3	GM

These Drawings are the Property & Copyright of

**FRANCIS
MANZELLA**
**DESIGN
LIMITED**

914.248.7680 Voice
914.248.7780 Fax
fmdesign@fmdesign.com
www.FMDesign.com

961 Route 6
Mahopac NY, 10541

Acoustic Consulting
and Studio Design

ARCHITECT

**LYNN FRITZLEN
ARCHITECT**

Office: The Yard 33 W 60th St. 2nd Floor
New York, NY 10023
Mailing: 140 Riverside Drive Suite 6E,
New York, NY 10024

PROJECT

Purchase College
Studio A
Renovations

Purchase, NY

DRAWING NAME

EQUIPMENT PLAN

SEAL & SIGNATURE

SCALE **1/4"=1'-0"**

DATE **11/19/2021**

CAD FILE#

DRAWING NUMBER

A-107.00

SHEET

SYMBOLS

NOTE: All Audio Wire Trough Construction to be Aligned in Plan and Section Through Wall Partitions.

3/8" Gap between Plywood Trough Construction & Floor Assembly; Seal With Acoustical Sealant
 Plywood Sleeve Through Existing Conc. Block Partition.
 1/2" Gap between Plywood Trough Construction
 Plywood Sleeve Through Existing Steel Stud Framed Partition.
 Held in Place with 2x Wood Blocking
 NO RIGID CONTACT Between Plywood Sleeve and Wall Laminations
 Acoustical Sealant Between Plywood Sleeve And W1 Wall Laminations.
 Audio Wire Trough
 Typical Floated Floor Construction

Kinetics IsoMax Clip Beyond.

Revisions			
REVISION #	DATE	REVISION	APPROVED
01	07/13/21	100% CD	GM
02	11/19/21	Addendum 3	GM

These Drawings are the Property & Copyright of

FRANCIS MANZELLA DESIGN LIMITED

914.248.7680 Voice
 914.248.7780 Fax
 fmdesign@fmdesign.com
 www.FMDesign.com

961 Route 6
 Mahopac NY, 10541

Acoustic Consulting and Studio Design

ARCHITECT
LYNN FRITZLEN ARCHITECT
 Office: The Yard 33 W 60th St. 2nd Floor
 New York, NY 10023
 Mailing: 140 Riverside Drive Suite 6E,
 New York, NY 10024

PROJECT
 Purchase College
 Studio A
 Renovations

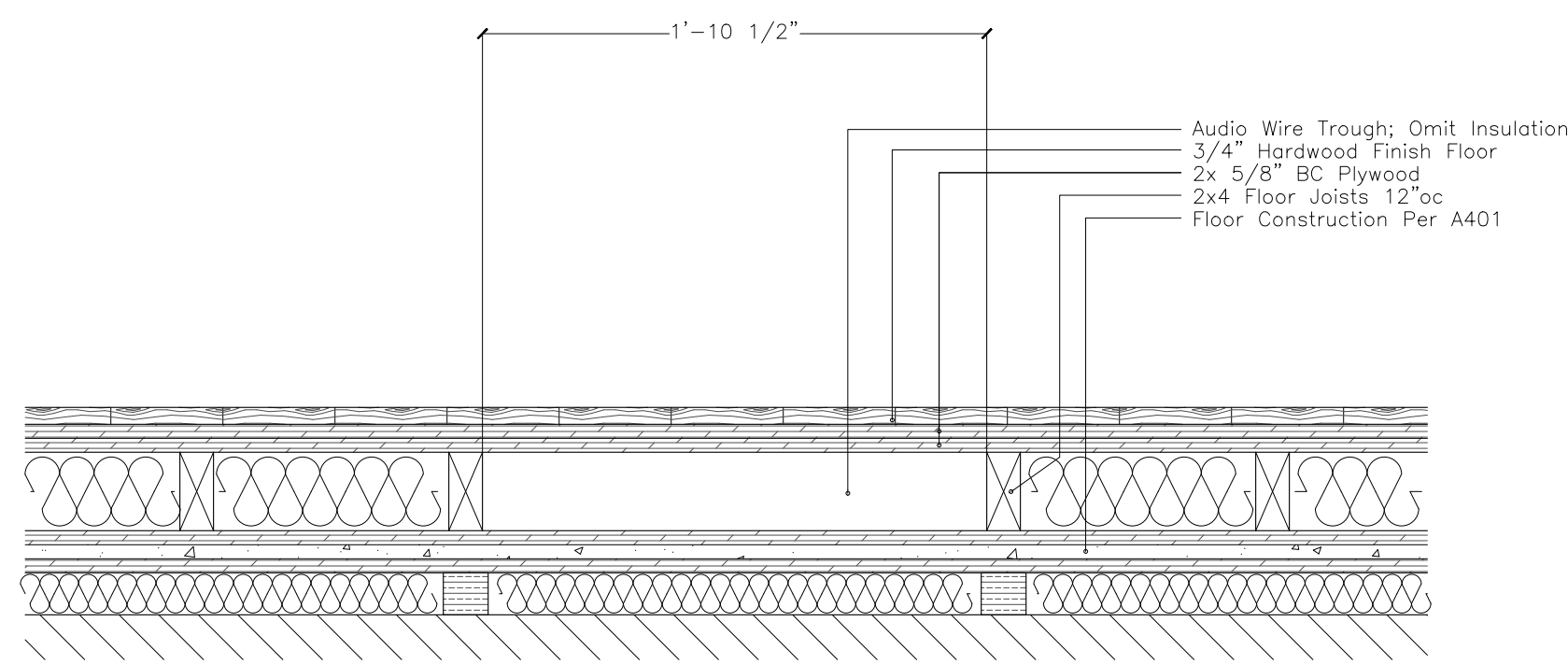
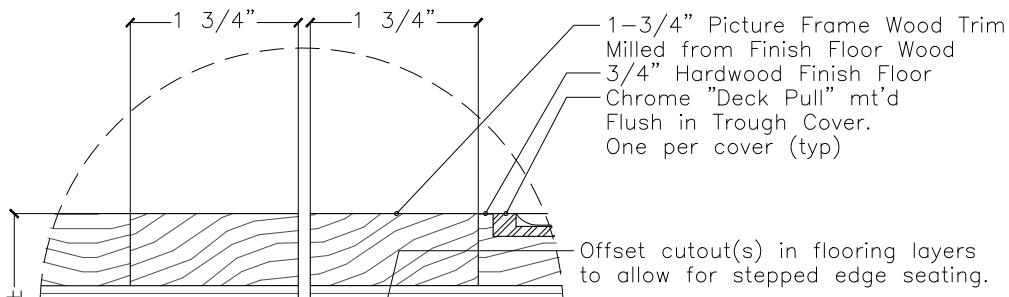
Purchase, NY

DRAWING NAME

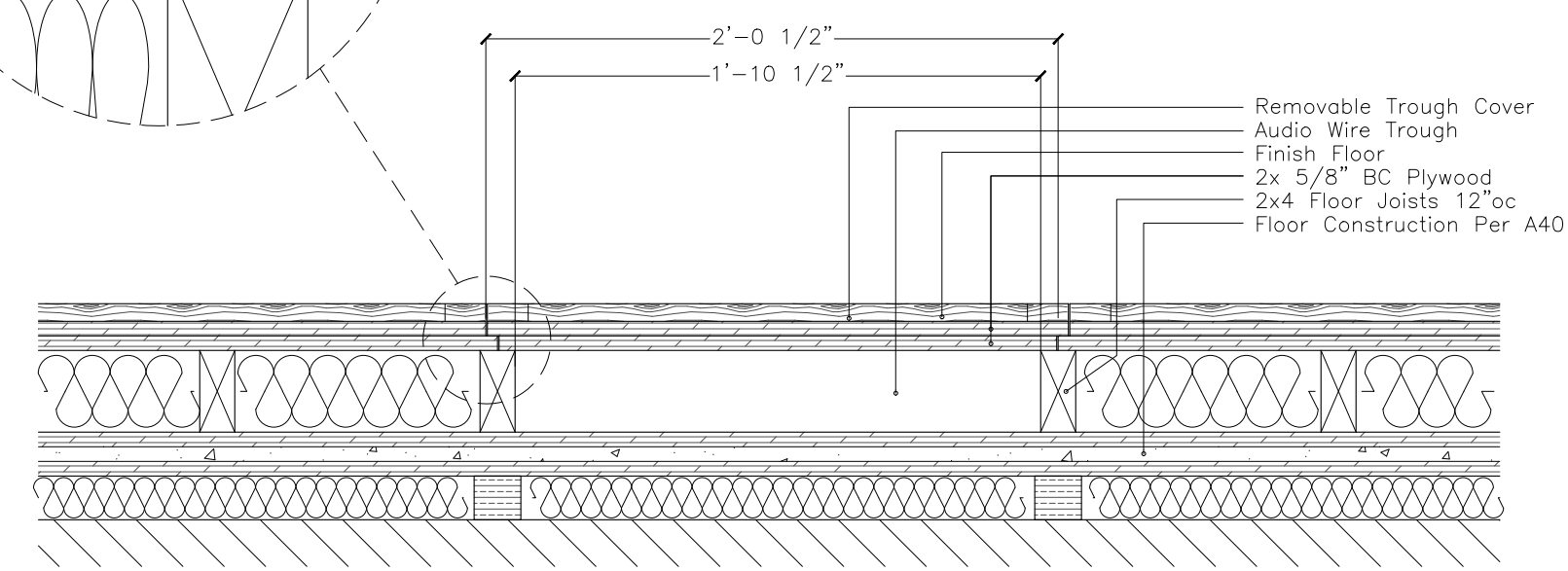
TROUGH & PIPING DETAILS

SEAL & SIGNATURE	SCALE	1/4"=1'-0"
	DATE	11/19/2021
	CAD FILE#	
	DRAWING NUMBER	A-403.00
	SHEET	

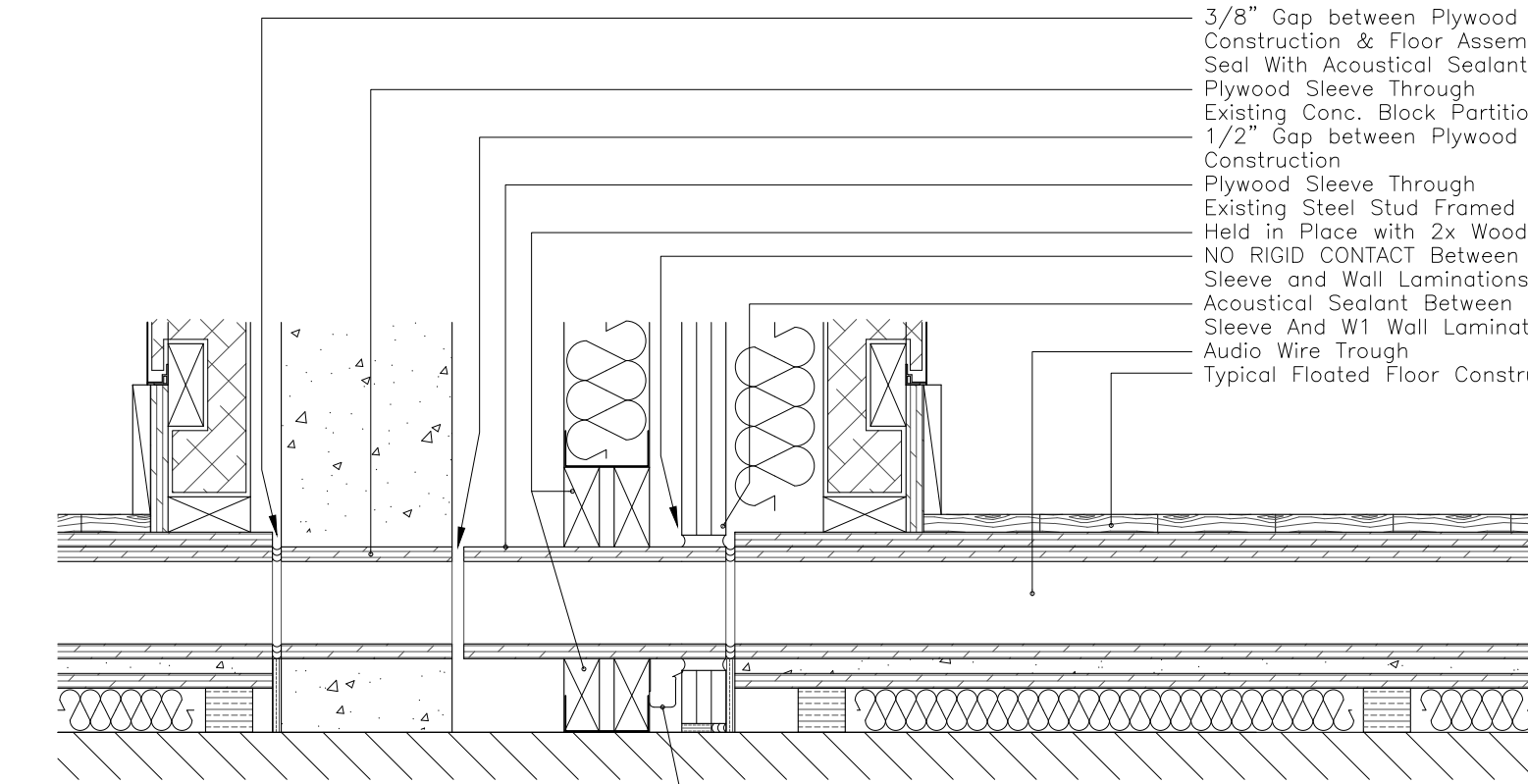
Typical Trim at Trough Cover



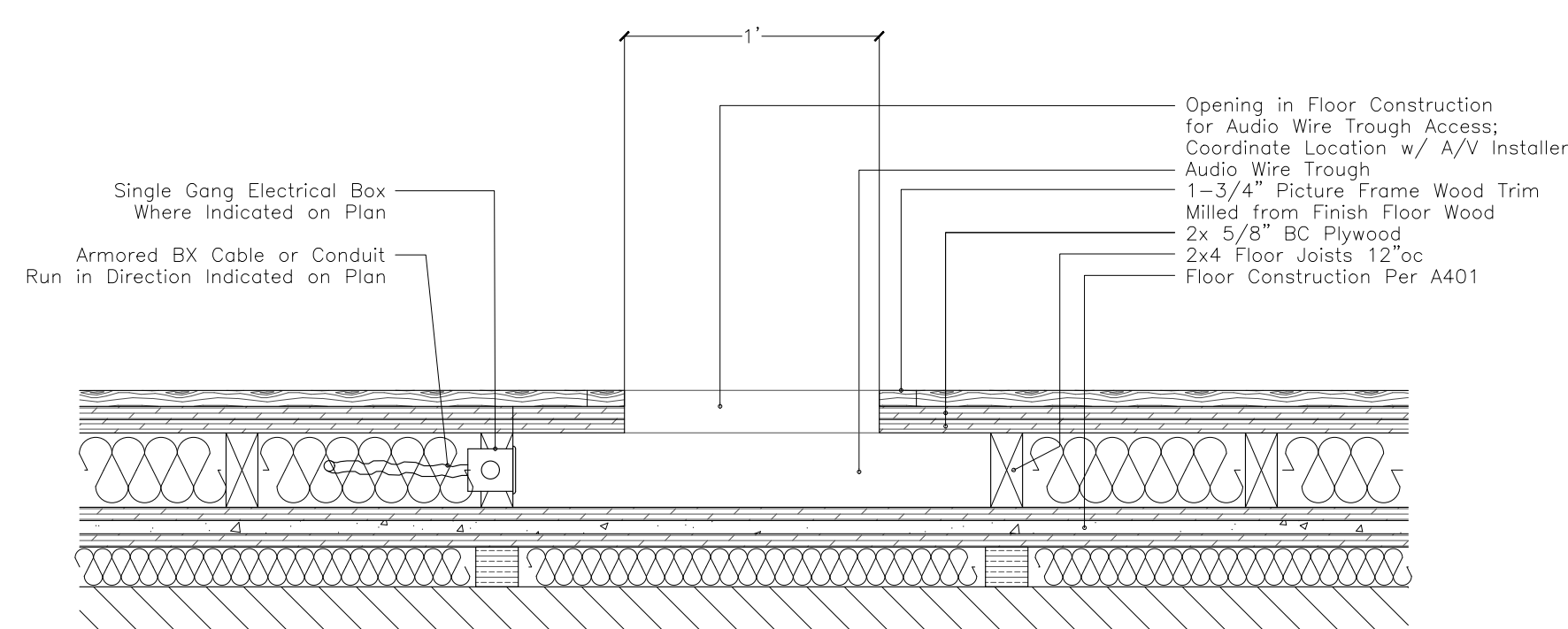
(A) Trough Detail



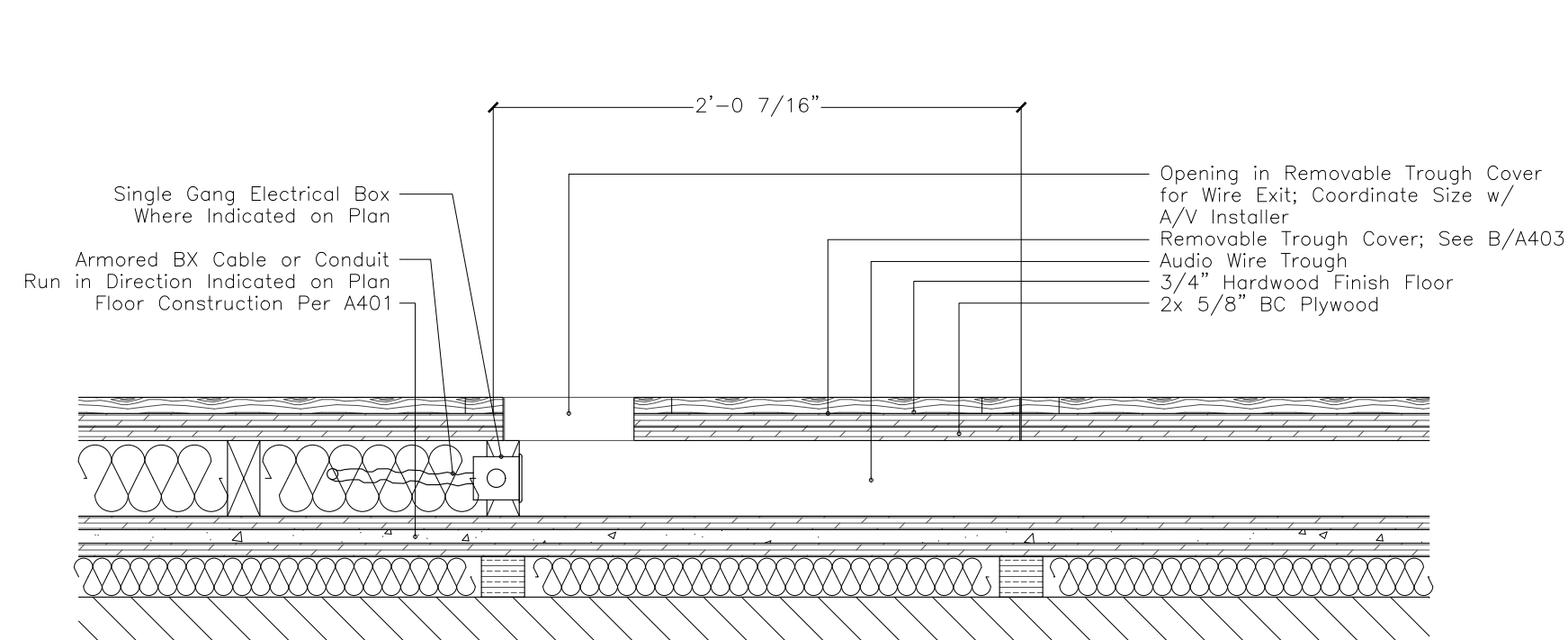
(B) Removable Trough Cover



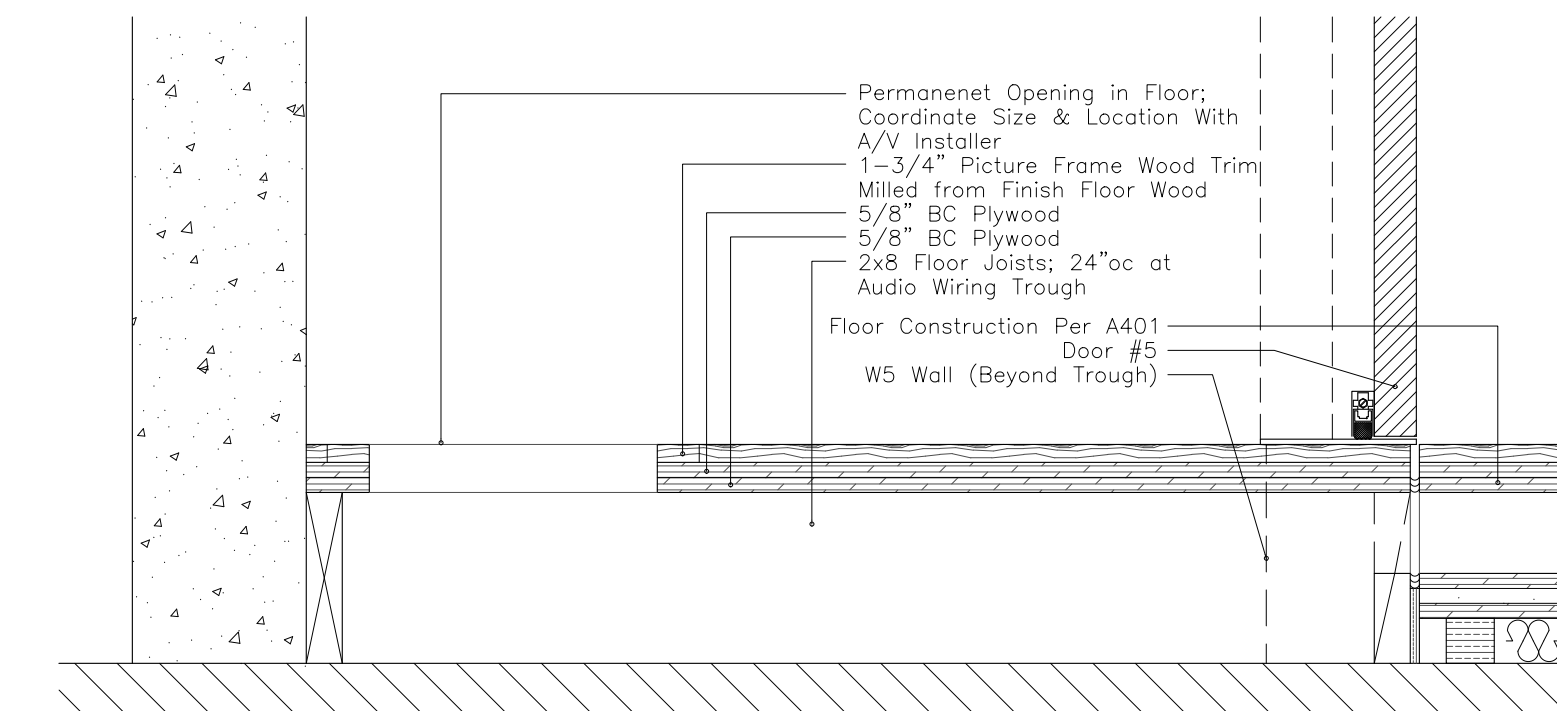
(C) Audio Trough Crossing Adjacent Floated Floors



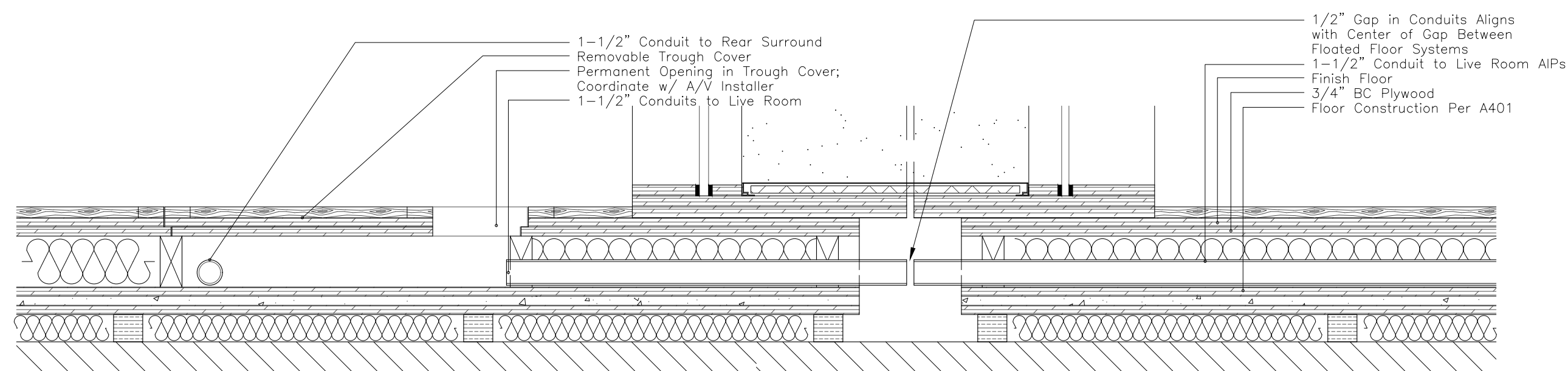
(D) Detail at Opening in Trough



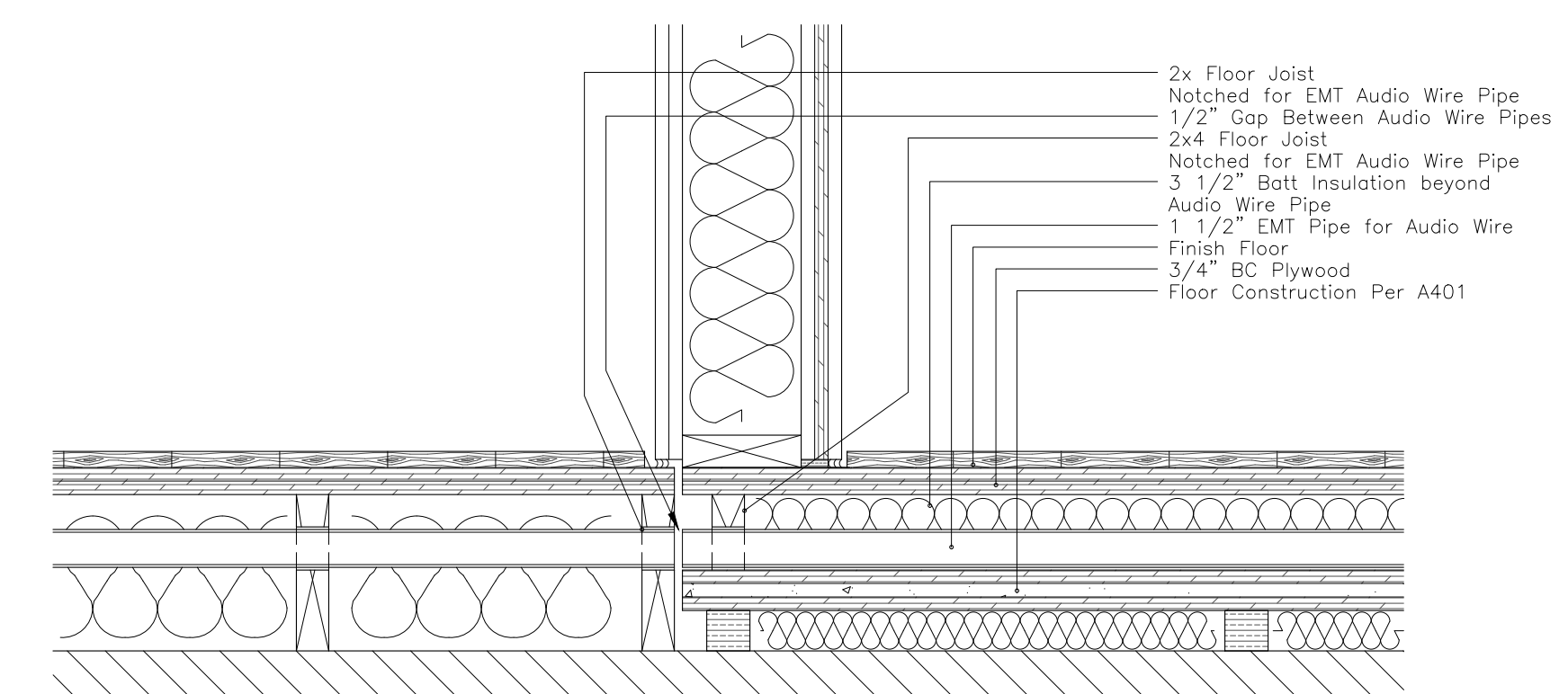
(E) Removable Trough Cover w/Wire Exit



(F) Detail at Opening in Trough

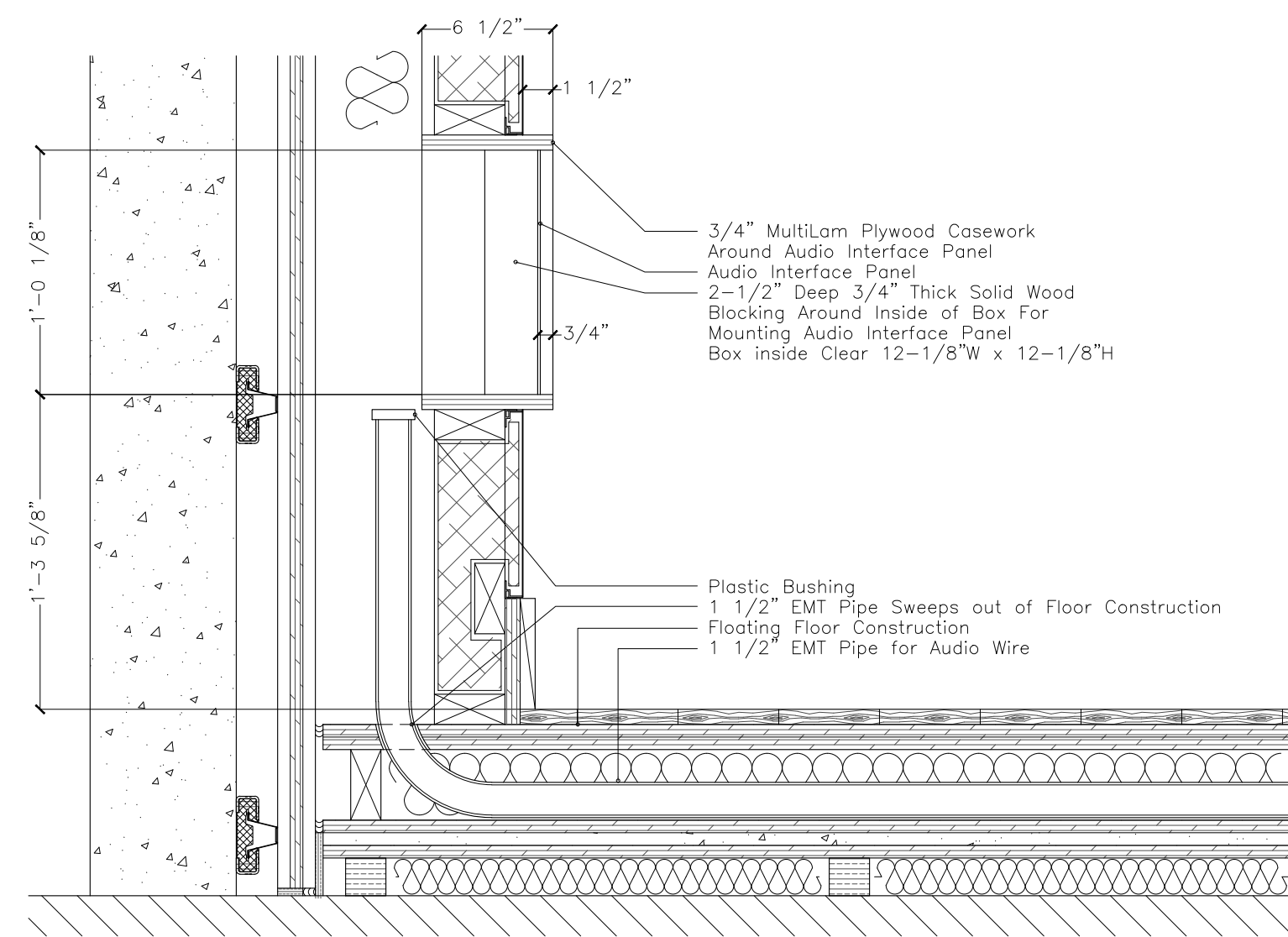


(G) Audio Pipes Exiting Trough at Removable Cover

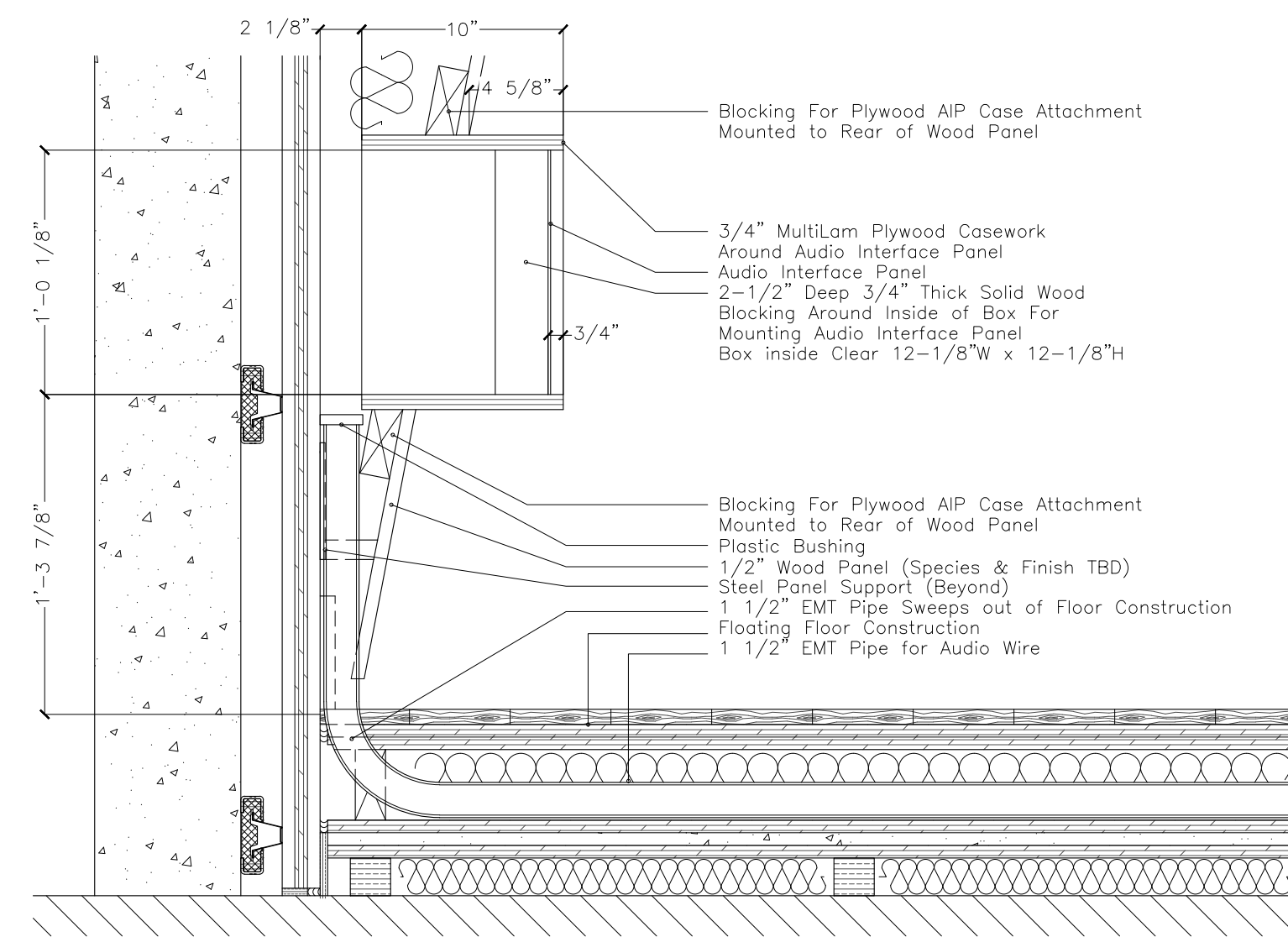


(H) Audio Pipe Exiting Isolated Floor

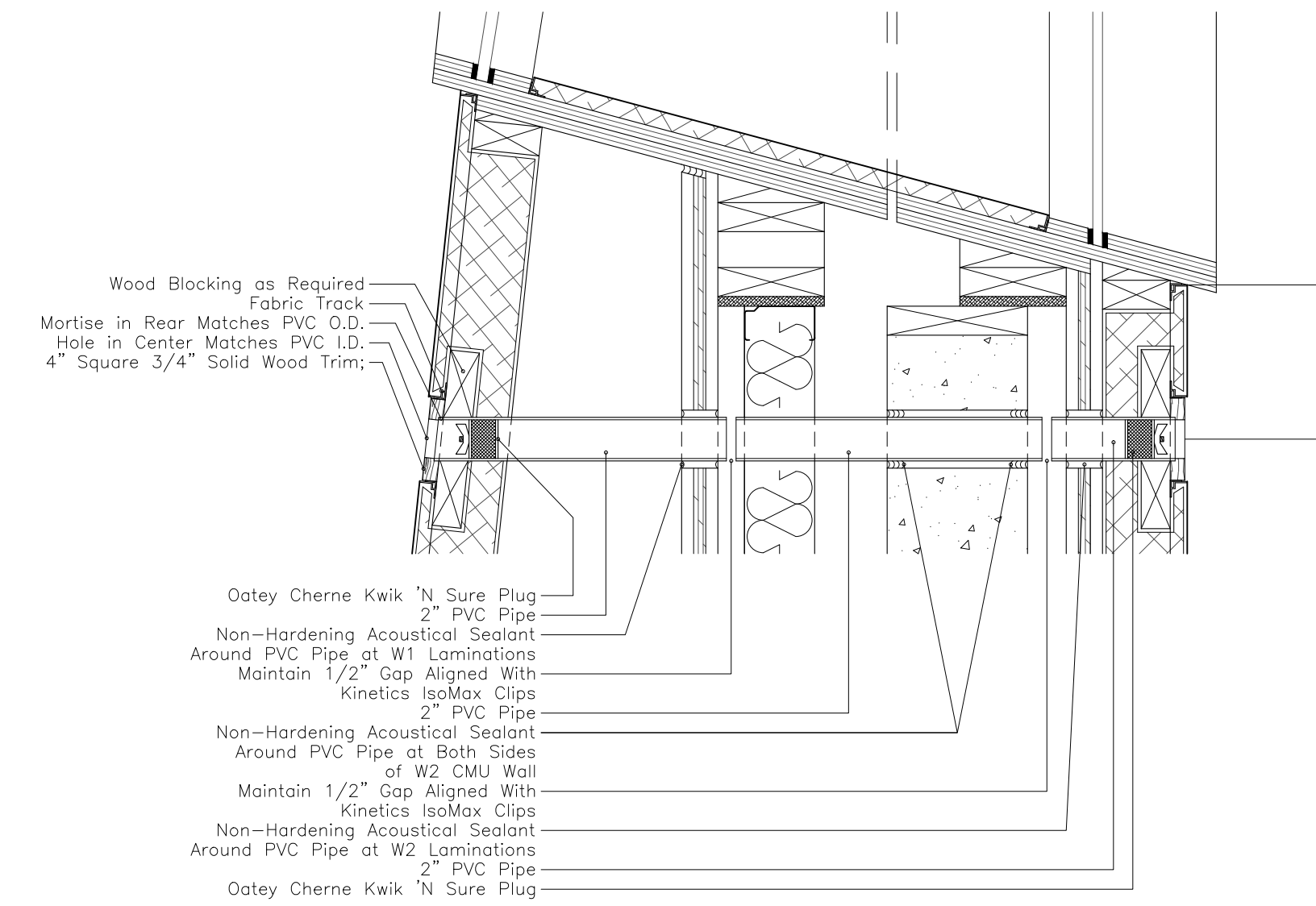
SYMBOLS



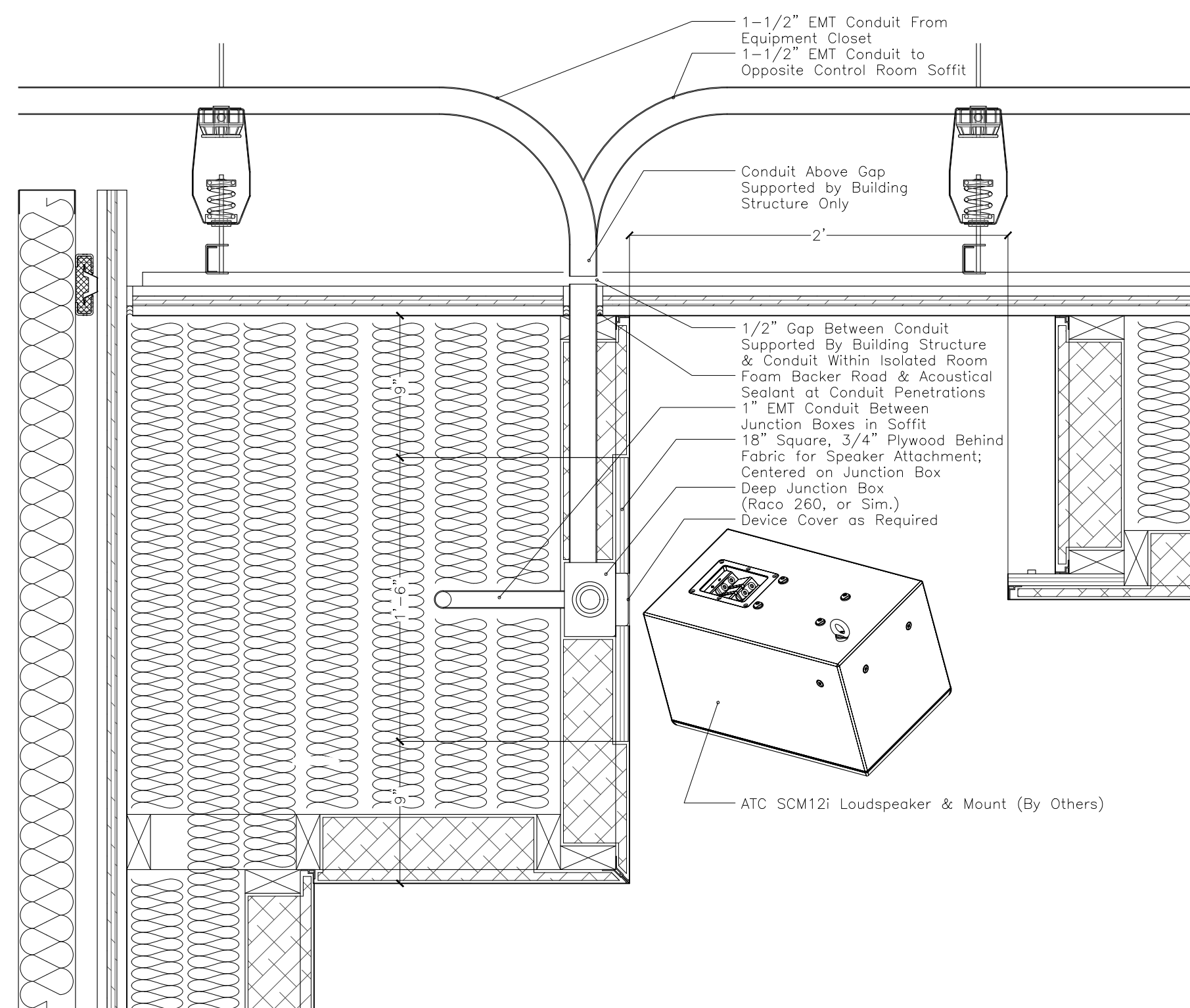
J Audio Interface Panel in Fabric Wall



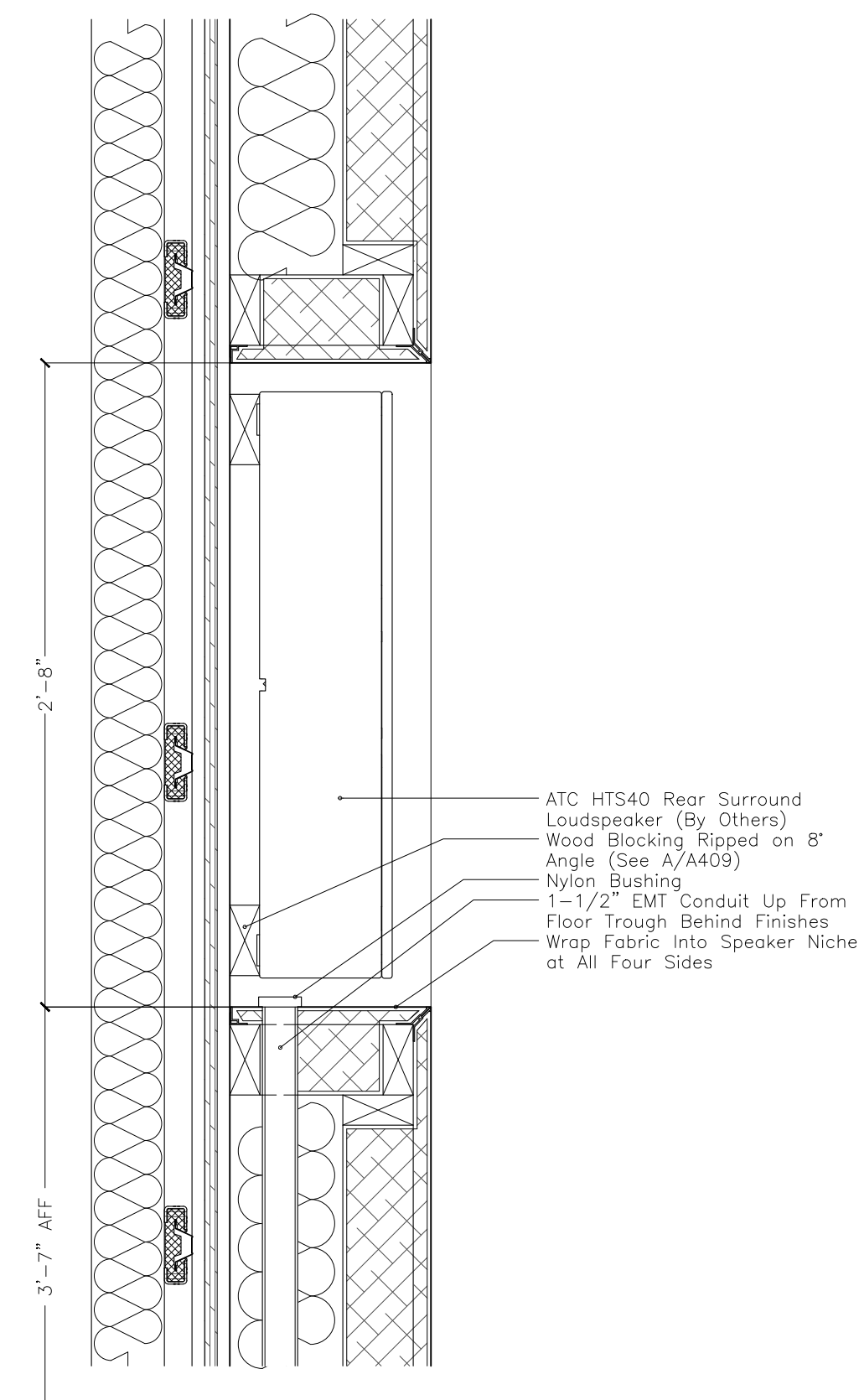
K Audio Interface Panel in T13 Wood Panel



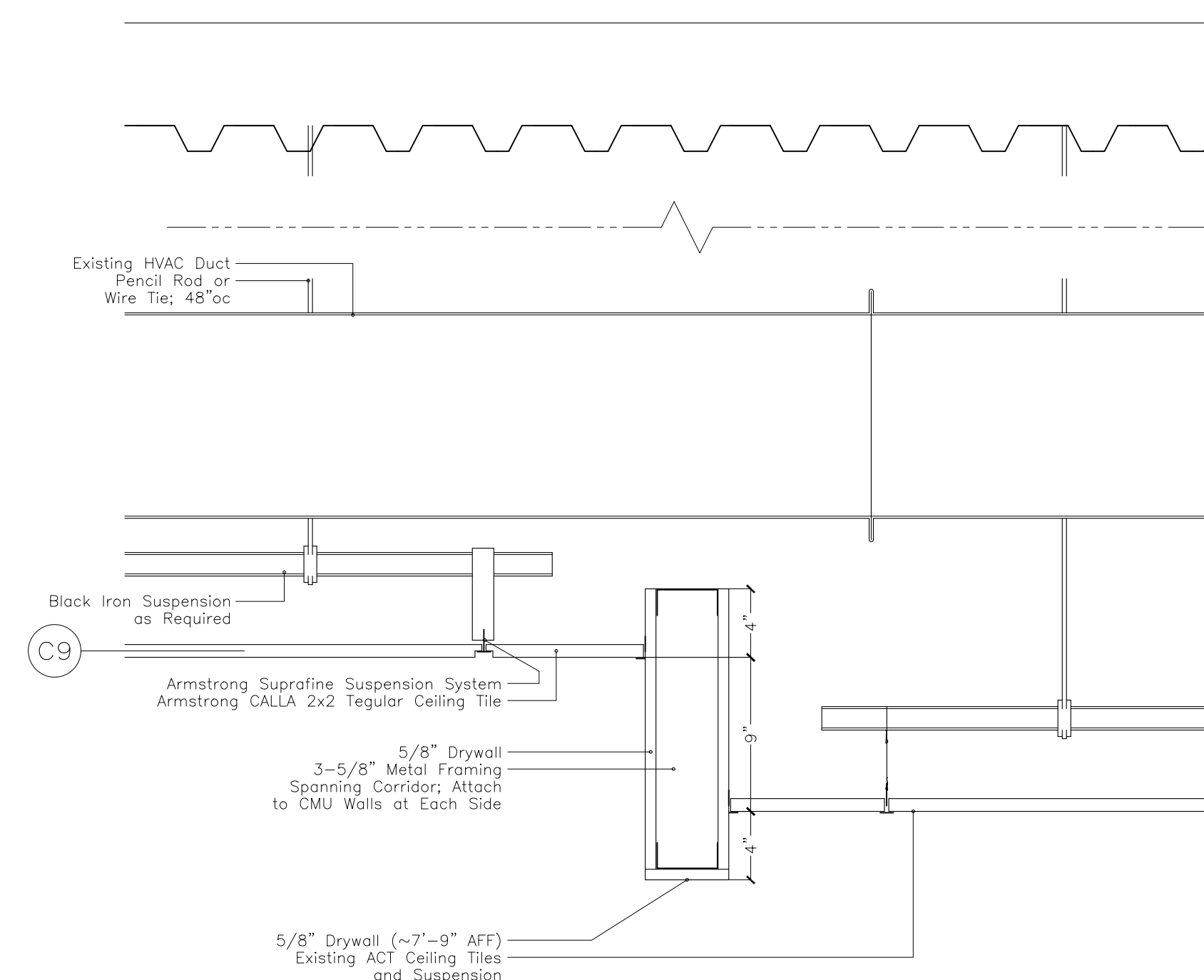
L Cable Pass-Through



M Detail at Overhead Speaker



N Detail at Rear Surround Speaker



P Section at Corridor Ceiling Transition

Revisions			
REVISION #	DATE	REVISION	APPROVED
01	07/13/21	100% CD	GM
02	11/19/21	Addendum 3	GM

These Drawings are the Property & Copyright of

FRANCIS MANZELLA DESIGN LIMITED
 Acoustic Consulting and Studio Design

914.248.7680 Voice
 914.248.7780 Fax
 fmdesign@fmdesign.com
 www.FMDesign.com

961 Route 6
 Mahopac NY, 10541

ARCHITECT

LYNN FRITZLEN ARCHITECT

Office: The Yard 33 W 60th St. 2nd Floor
 New York, NY 10023
 Mailing: 140 Riverside Drive Suite 6E,
 New York, NY 10024

PROJECT

Purchase College Studio A Renovations

Purchase, NY

DRAWING NAME

TROUGH & PIPING DETAILS

SEAL & SIGNATURE	SCALE	1/4"=1'-0"
	DATE	11/19/2021
	CAD FILE#	
	DRAWING NUMBER	A-404.00
	SHEET	