

I caught you exposed.

ALEX

I was in the middle of something.

WOLF



Right right.
So. Betcha know what time it is!

ALEX

Think so.

WOLF

Special delivery we might call it.
My mouth's been watering all day.
So. (6)

It must be exhausting for you, living with them.
They don't like you or your species.
There are too many of them.
I'm so lucky to be at the top of the food chain.
As are you.

ALEX

I know.

WOLF

Letting them reproduce unchecked could have terrible repercussions.
So. You about ready? (1)

ALEX

Well.
I mean I think so.

WOLF

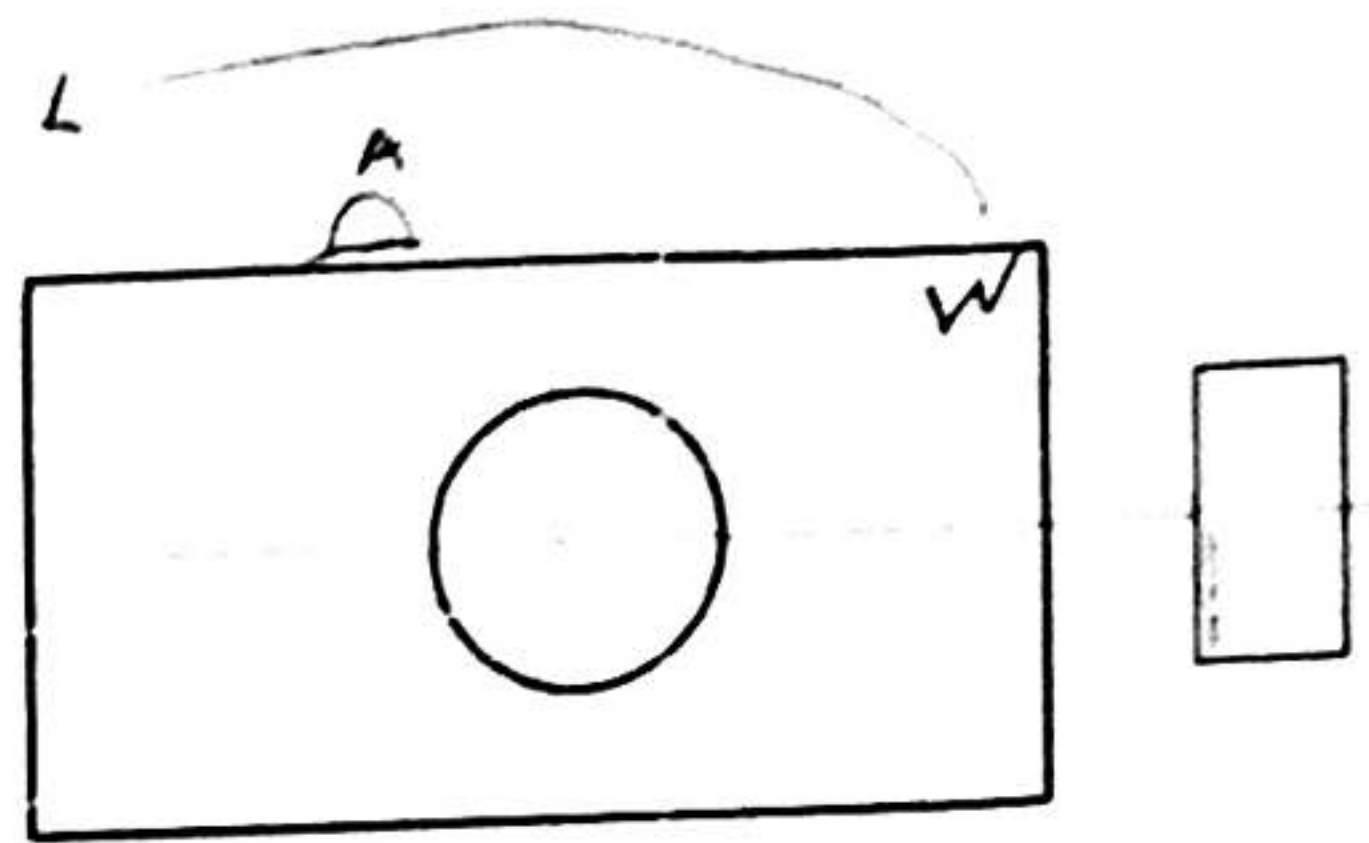
How about a game of cards?

(2)

They play.
It is tense.

ELK approach from behind.
They begin speaking softly.

(3)



.5) $W_0 \times W_N$

.6) W_0 points to Δ_N as A scrambles back to W_c

1) $W_0 \times$ to inbetween Δ_N & A

2) W_0 & A $\{$ in h_N & h_s respectively

3) Elk ent W_N : $Q \times$ to W_s , $G \times$ to W_c , $P \times$ to W_N

Oh yes.
Ahhem.

Lights up on the hospital room.
The bed is empty.

(1)

Should be able to find your way.

The wolf bows and disappears.

(2)

ALEX steps toward the hospital room.
ROSA enters it and sits down by the bed, she reads a magazine.
MICHAEL enters and sits down on the other side of the bed.
ALEX starts to move towards him.

ELK QUEEN and ELK GRANDMOTHER sing.
It's the song of the herd but incomplete.

ALEX slows.
As he moves toward the hospital room their song grows louder and more urgent.

ELK QUEEN and ELK GRANDMOTHER enter
They are holding ELK PAGE
They lower him onto the ground.

ALEX watches them.

ELK QUEEN and ELK GRANDMOTHER bury ELK PAGE.

They sing again.
ALEX approaches
They stop abruptly.

Stop watching, human.

ELK QUEEN

Wait.

ALEX

You betrayed us.

ELK QUEEN

What happened?

ALEX

ELK QUEEN

Can't be seen with you.
You're going to give our whereabouts to the wolf.

ALEX

I don't understand- how did he get to you so fast?

ELK QUEEN

Page was never careful.
Too eager to learn about the other species.
Now my work is protecting grandmother.

ALEX

I didn't know it would happen so quickly.

ELK QUEEN

You have always been naïve to the clock of the forest.

(5)

ALEX

I didn't-
This wasn't-
Oh god
I'm so sorry.

ELK QUEEN

We have no more use for you here. (1)

BLACK OUT

ELK exit.

(2)

Lights up
SCENE ELEVEN

Night.

MICHAEL sits beside ALEX' hospital bed in the dark.
MICHAEL tries to sing the song that ALEX taught him.

(3)

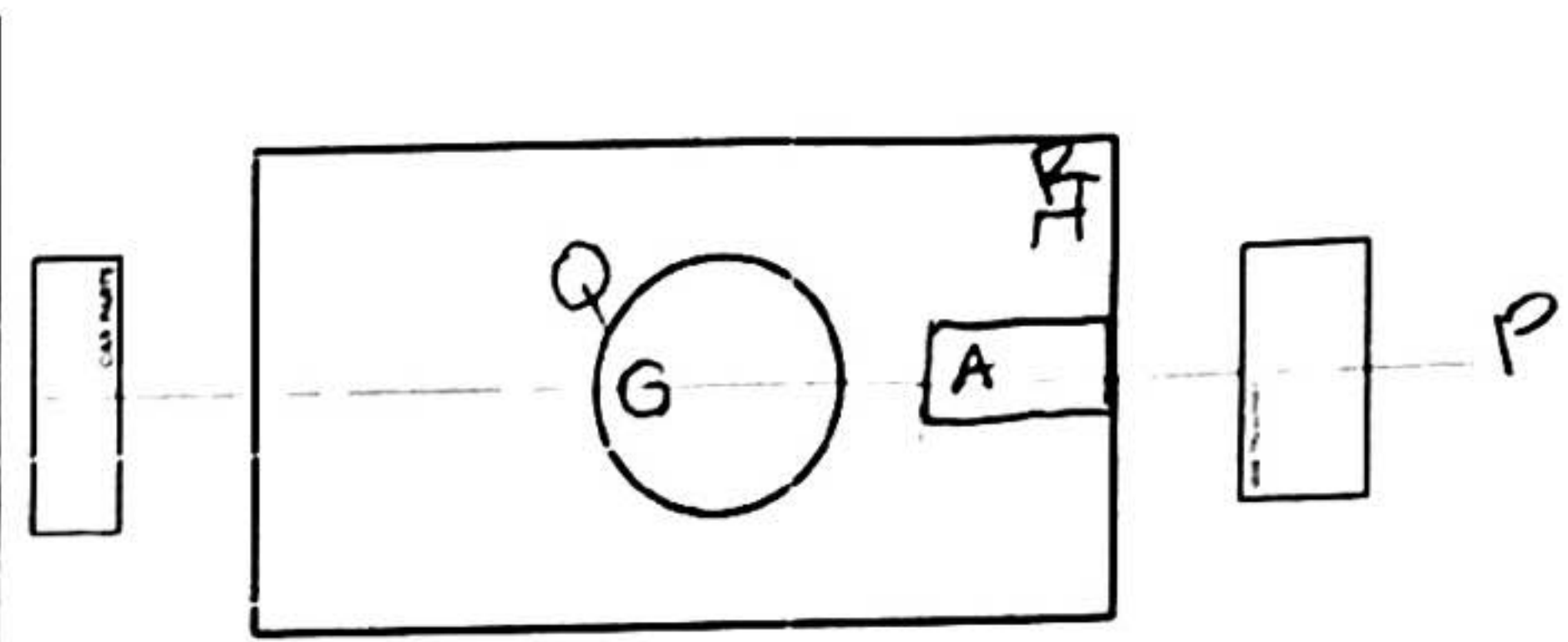
MICHAEL

Can't remember.
Shit.

He tries again.

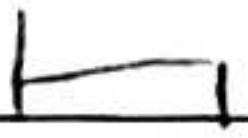
I suck at music.

ALEX sings it.



G R

.5) Q lays flowers over pelt

1) A lays back in 

2) Q : G ex W_N, R ex EN, M ENT

E_s stands East of bed

3) M X to S foot of bed w/
back to bed

@ blackout
check w/
Grace about bed
locks