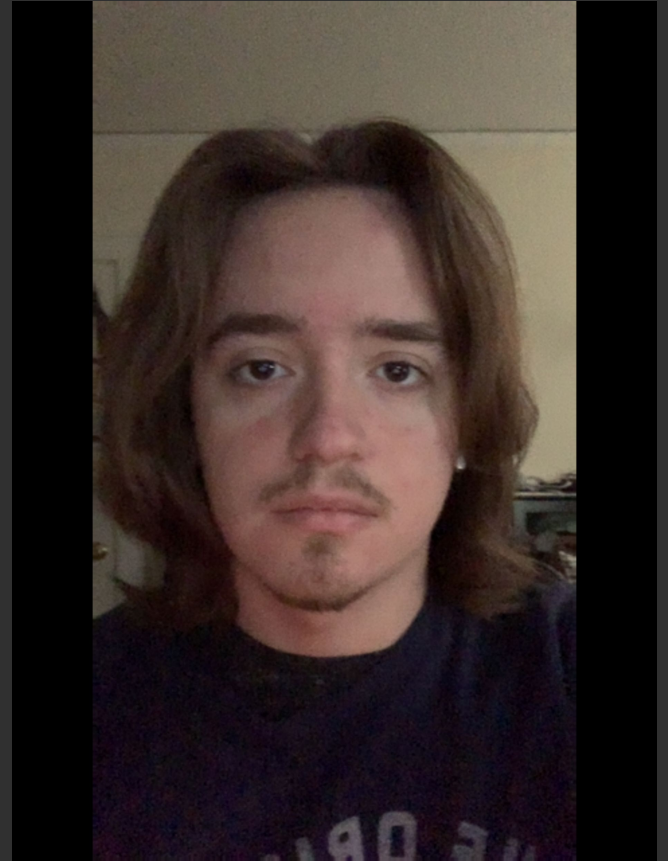


# Zoom Lighting Guide

By:Chris Heffelfinger

# No Lighting

- Only natural light
- Shadows on face
- No direction



# Front Light

-There are three easy ways you can achieve front lighting from home!



## Option 1

- Setting a light directly above your computer
- To lower intensity, place light further away from face



## Option 2

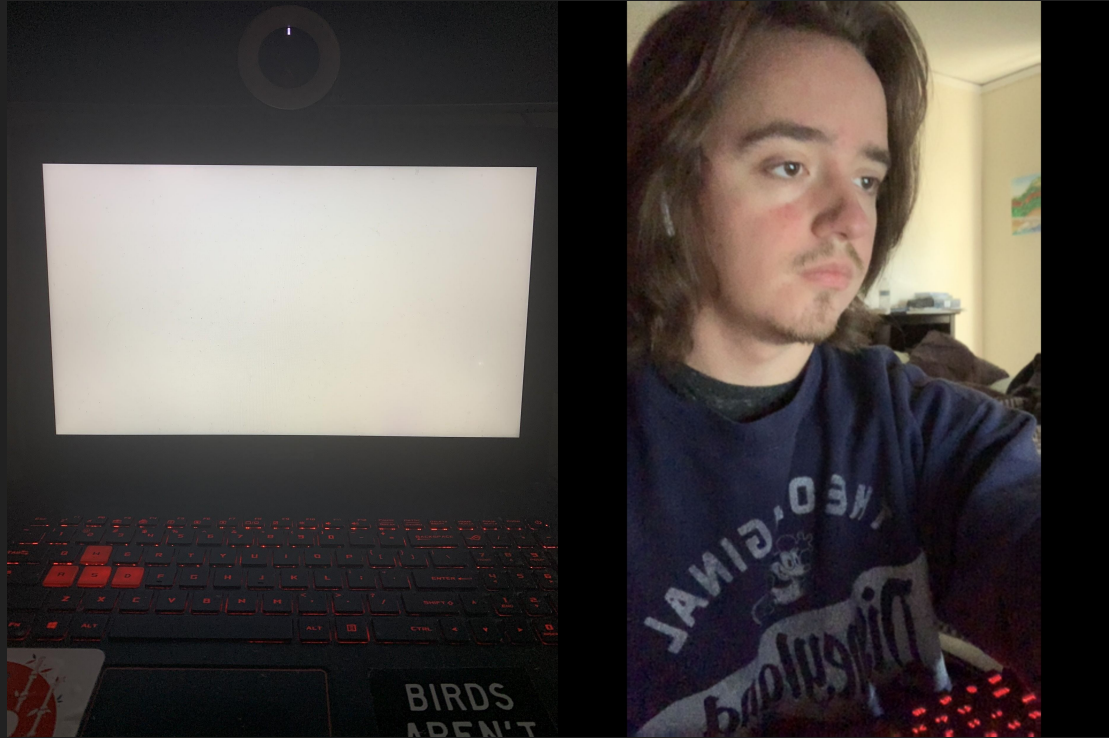
- Placing light behind camera

- To adjust intensity, play with it's height



## Option 3

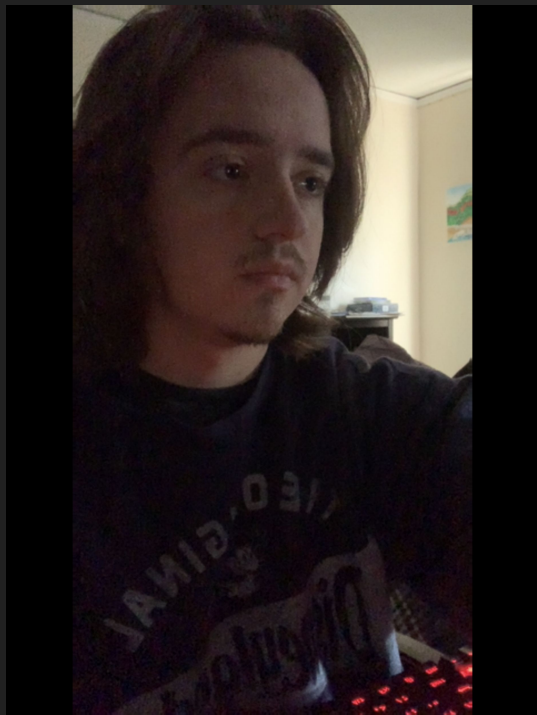
- Use a white background
- To adjust intensity, lower/raise screen brightness





# Even the white screen can make a big difference

## Before



## After



# Side Light

-Side light is very easy to achieve and can be very dramatic





## Side Light

- Place the light directly to your side
- To adjust intensity, play with distance
- Creates a shadow on half your face



# 45°/Beauty Lighting

-This lighting is commonly used for videos and cameras



## 45° Lighting

- Place the light above the camera and to a side
- The light should be in the corner of your eye
- Creates a low theatrical shadow



## Double 45° Lighting / Beauty Lighting

- Place the light above the camera and to a side (x2)
- The lights should be in the corner of your eye
- Creates a even glow on your face





# Don't Forget to Have Fun!

- Remember to have fun with your character
- Lighting is used to enhance your creation, not limit it
- I'm always here to help
- 914-888-6905
- [chris.heffelfinger@purchase.edu](mailto:chris.heffelfinger@purchase.edu)

