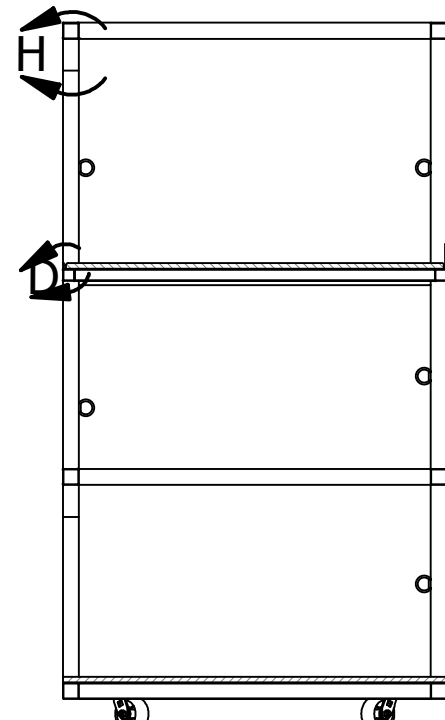
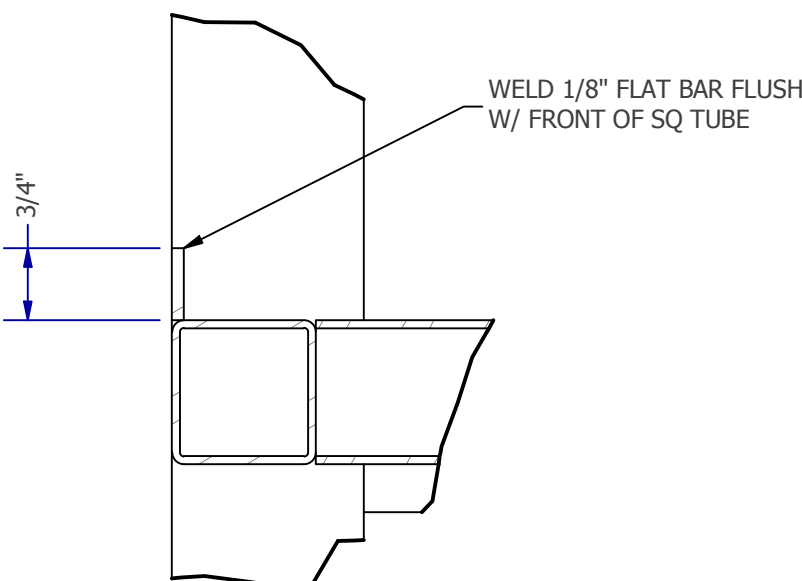
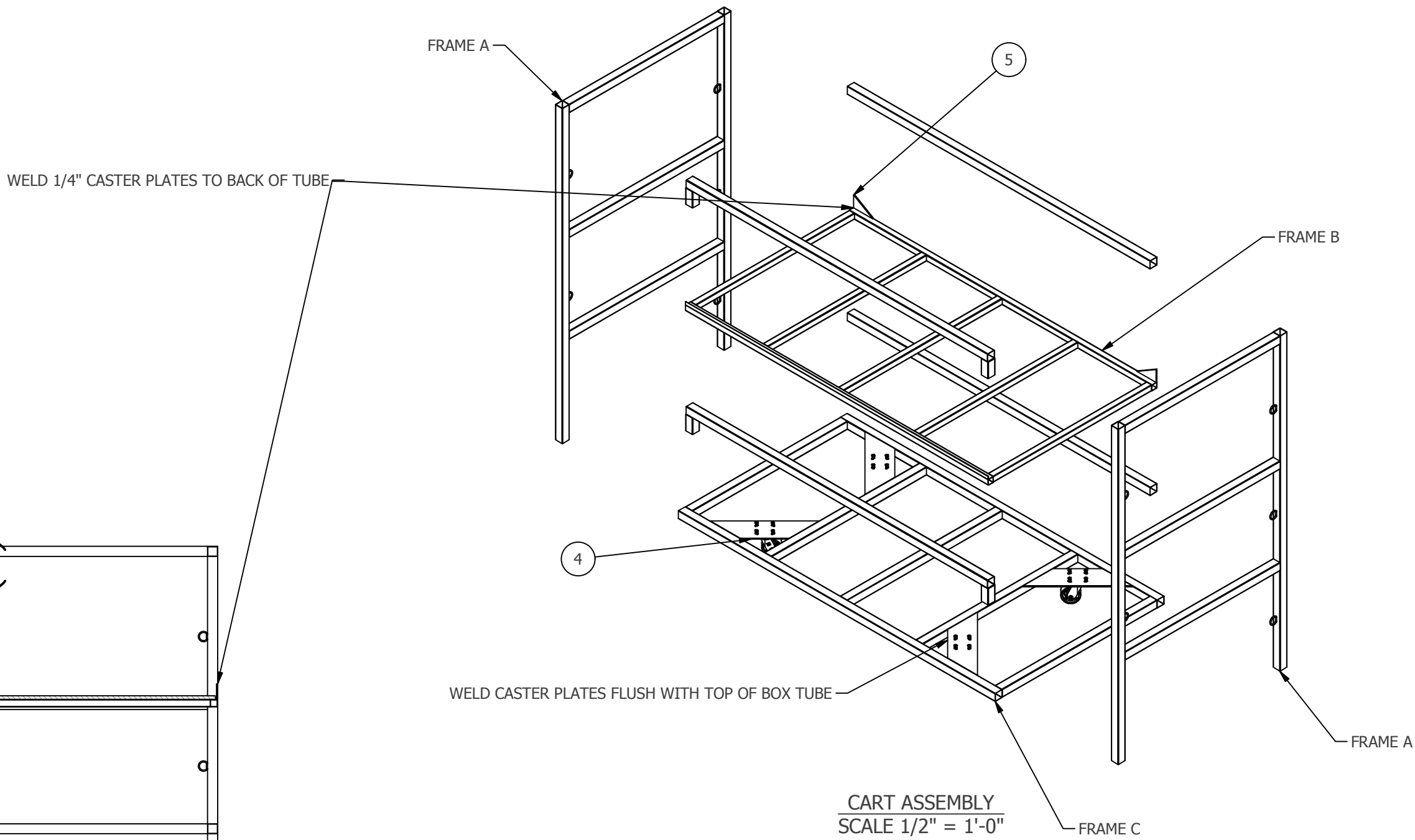


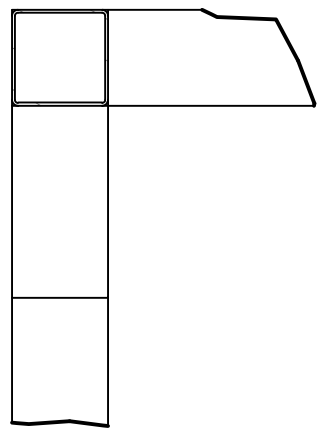
100315-KINGS THEATER-STORAGE CARTS  
SCALE 1/2" = 1'-0"



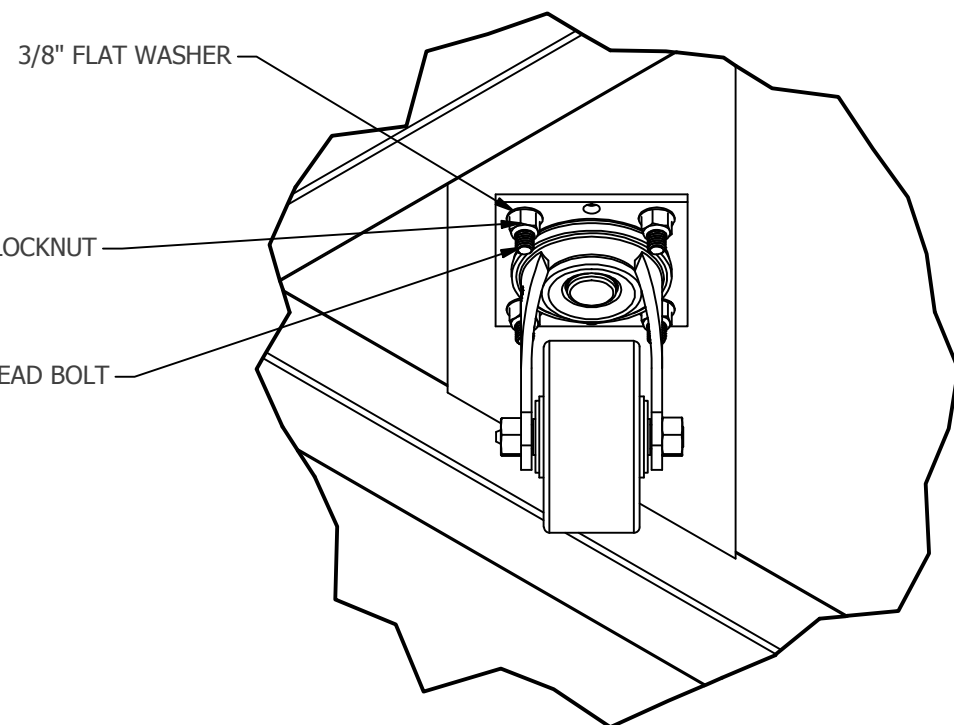
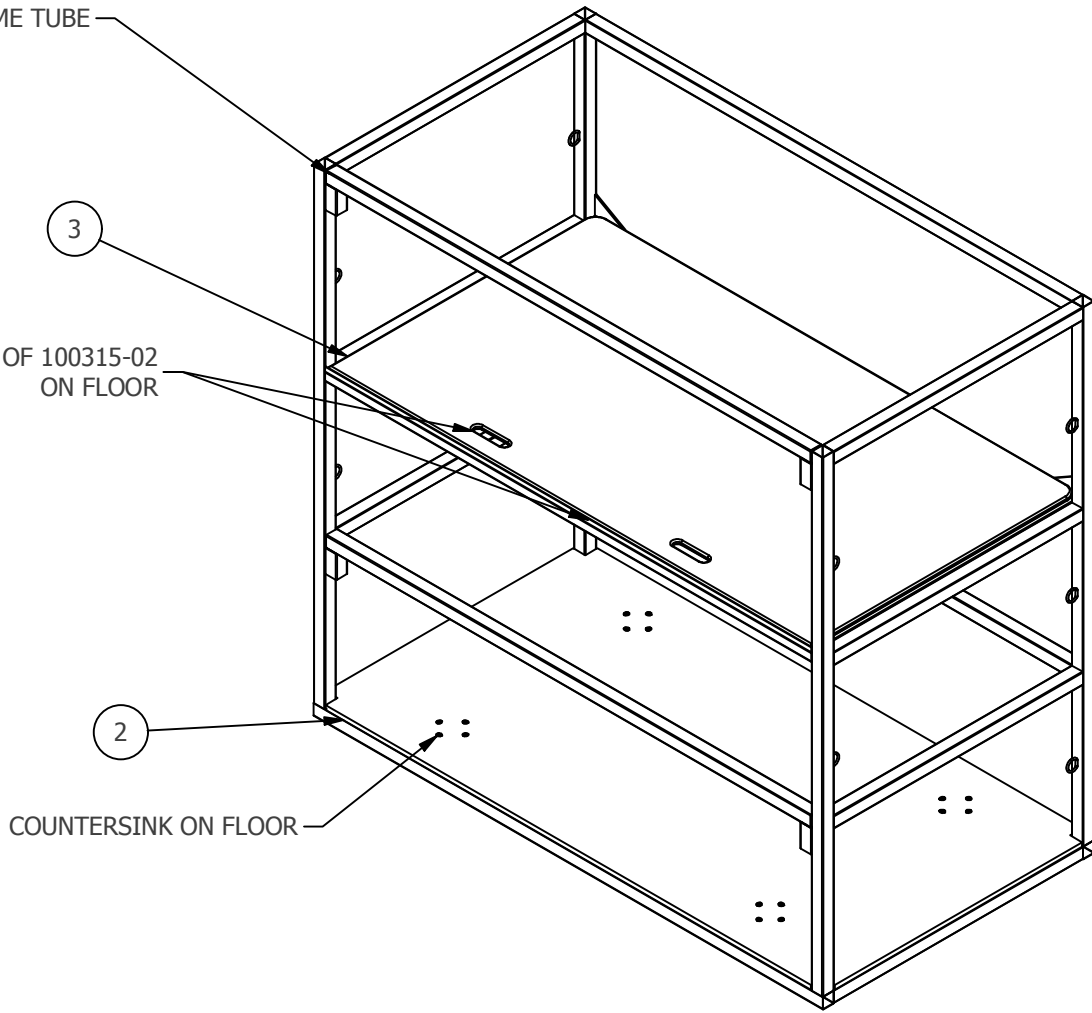
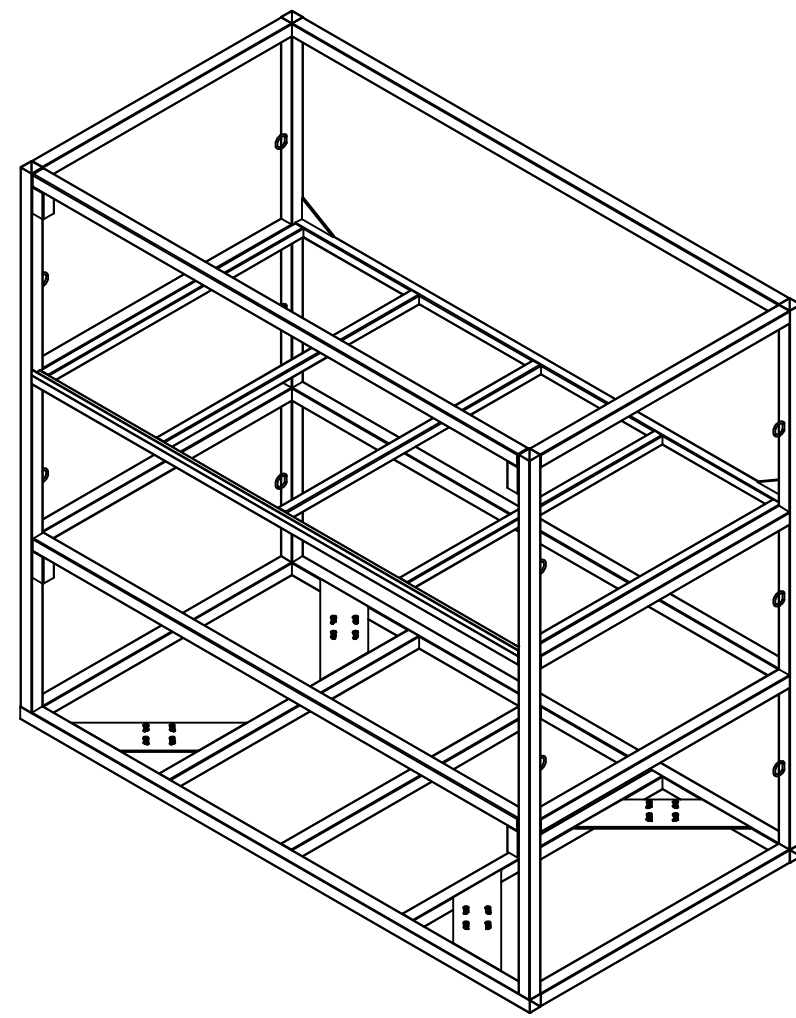
SECTION C-C  
SCALE 1/2" = 1'-0"



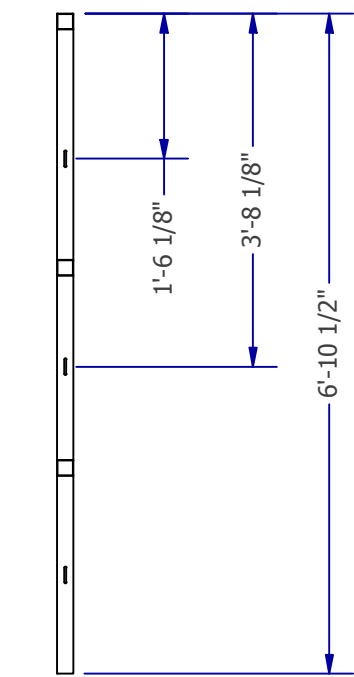
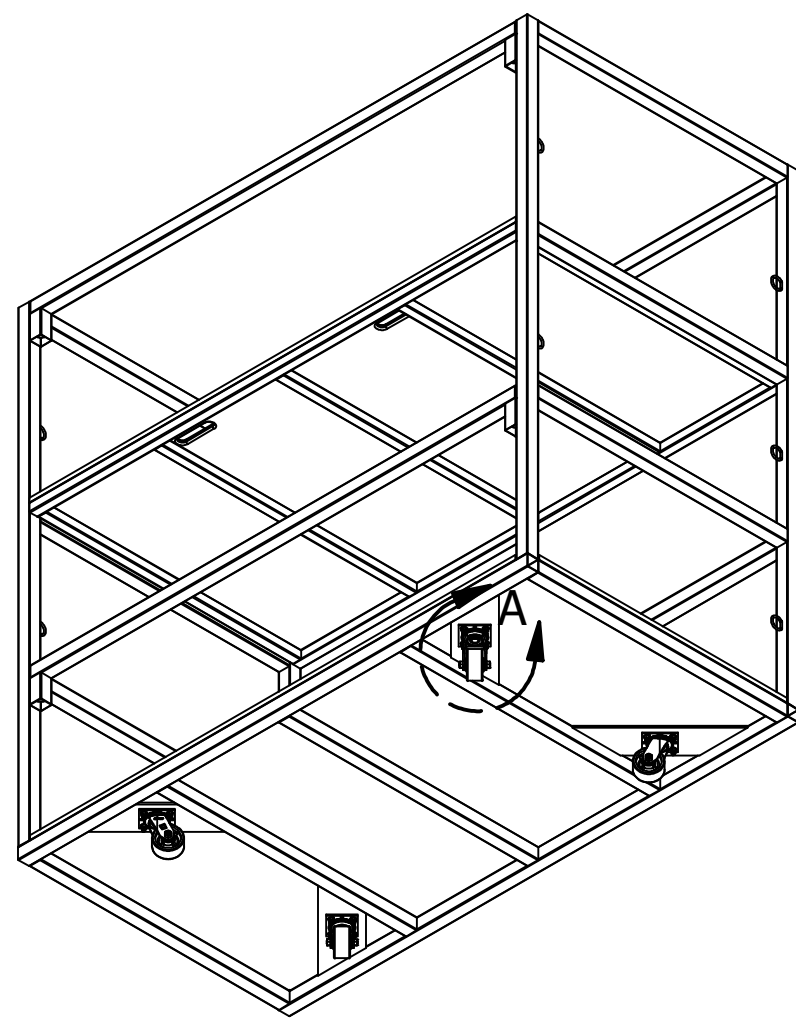
DETAIL D  
SCALE 6" = 1'-0"



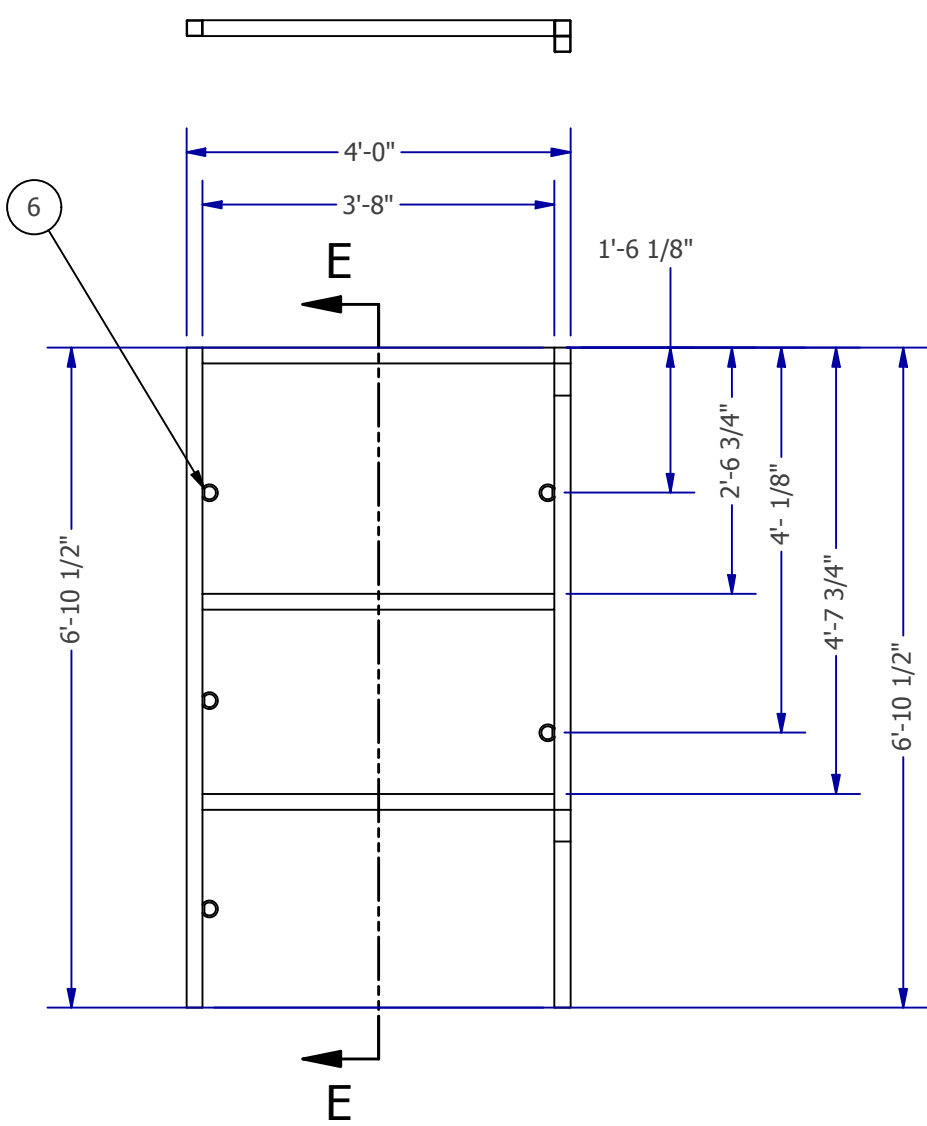
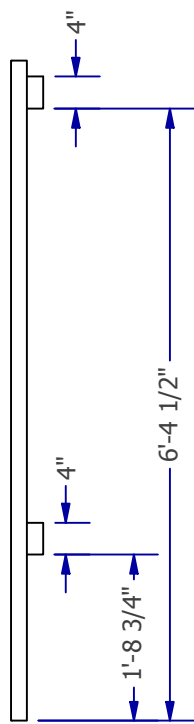
DETAIL H  
SCALE 3" = 1'-0"



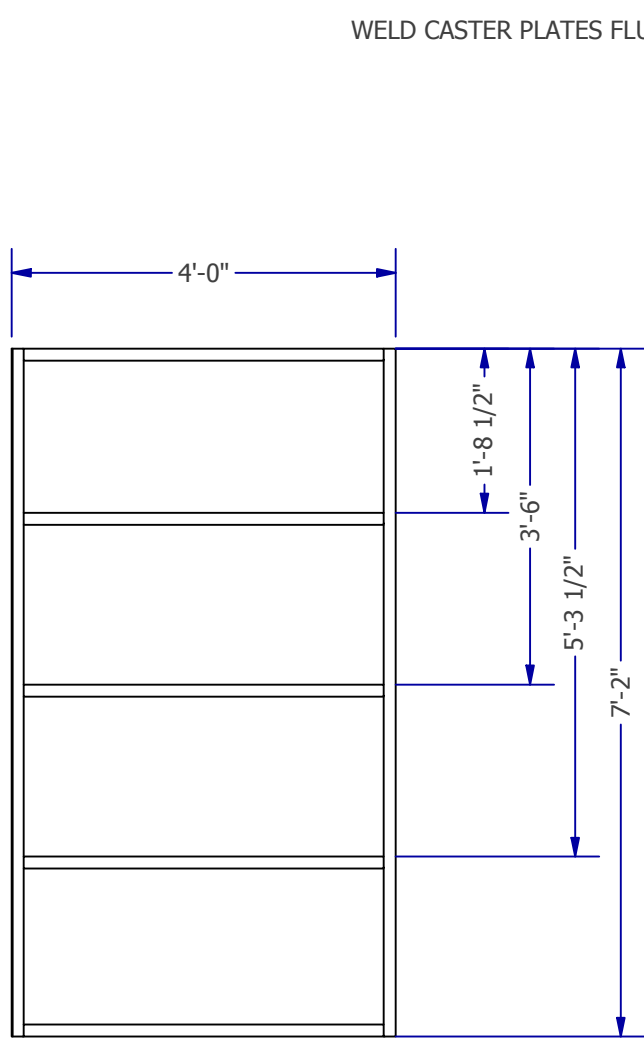
DETAIL A  
SCALE 3" = 1'-0"



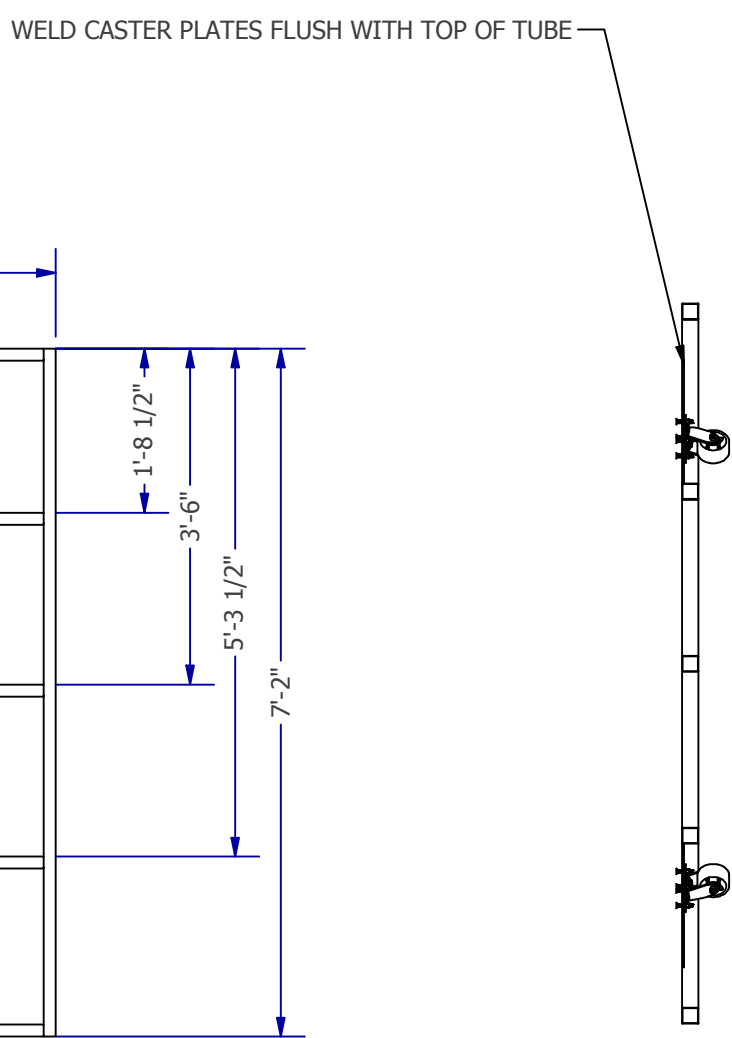
SECTION E-E  
SCALE 1/2" = 1'-0"



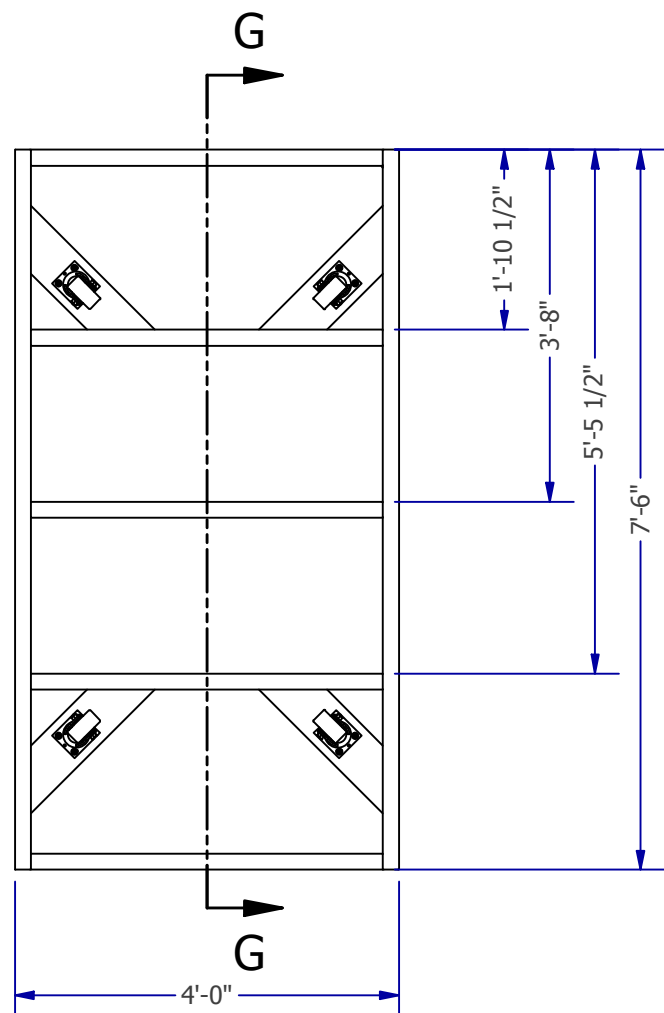
FRAME A  
SCALE 1/2" = 1'-0"  
BUILD (2) FROM 2"X2"X16GA SQ TUBE



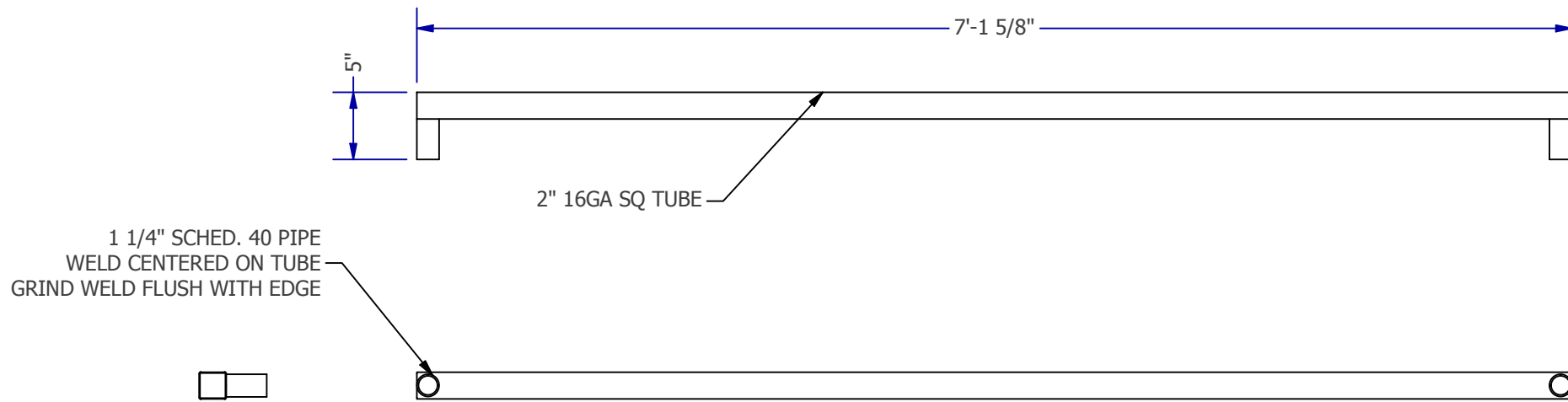
FRAME B  
SCALE 1/2" = 1'-0"  
BUILD (1) FROM 1 1/2"X1 1/2"X14GA SQ TUBE



SECTION G-G  
SCALE 1/2" = 1'-0"



FRAME C  
SCALE 1/2" = 1'-0"  
BUILD (1) FROM 2"X2"X16GA SQ TUBE



100315-KINGS THEATER-STORAGE CARTS  
SCALE 1" = 1'-0"  
QTY:2

NOTES:

- FRAME A AND C WELDED FROM 2"X2"X16GA SQ TUBE
- FRAME B WELDED FROM 1 1/2"X1 1/2"X14GA SQ TUBE

BILL OF MATERIALS				
ITEM	PART NUMBER	ITEM QTY	DESCRIPTION	MACHINE
2	100315-01	1	Plywood BC	AN
3	100315-02	1	Plywood BC	AN
4	100315-CASTER PLATE	4	Steel HR	PL
5	100315-GUSSET	2	Steel HR	PL
6	D RING	10	STOCK	N/A

KINGS THEATER STORAGE CARTS  
CHAIR STORAGE CARTS  
CONSTRUCTION

CONST. SCHEDULE	CONST. FINISH	TO PAINT	SHIP DATE	REVISIONS	DESIGNER DRAWING #
ON FLOOR				REV 3	100315-KINGS THEATER STORAGE CARTS
					1.1

THESE DRAWINGS & THE IDEAS REPRESENTED ARE THE PROPERTY OF SHOMAN FABRICATORS INC. ©COPYRIGHT 2017 BY SFI

CLIENT: KINGS THEATRE

DESIGN: SFI

PROJECT MANAGER: S MORGAN

LEAD CARPENTER: L HICKMAN

APPROVED

DRAWN BY: CNICKEL

SCALE: 1"=1'-0"

PRINTED ON: 8/13/2019

JOB NO.: 100315

148 EAST 5TH STREET  
BAYONNE, NJ 07002  
(718) 935-9899  
www.showfab.com

SHOMAN FABRICATORS