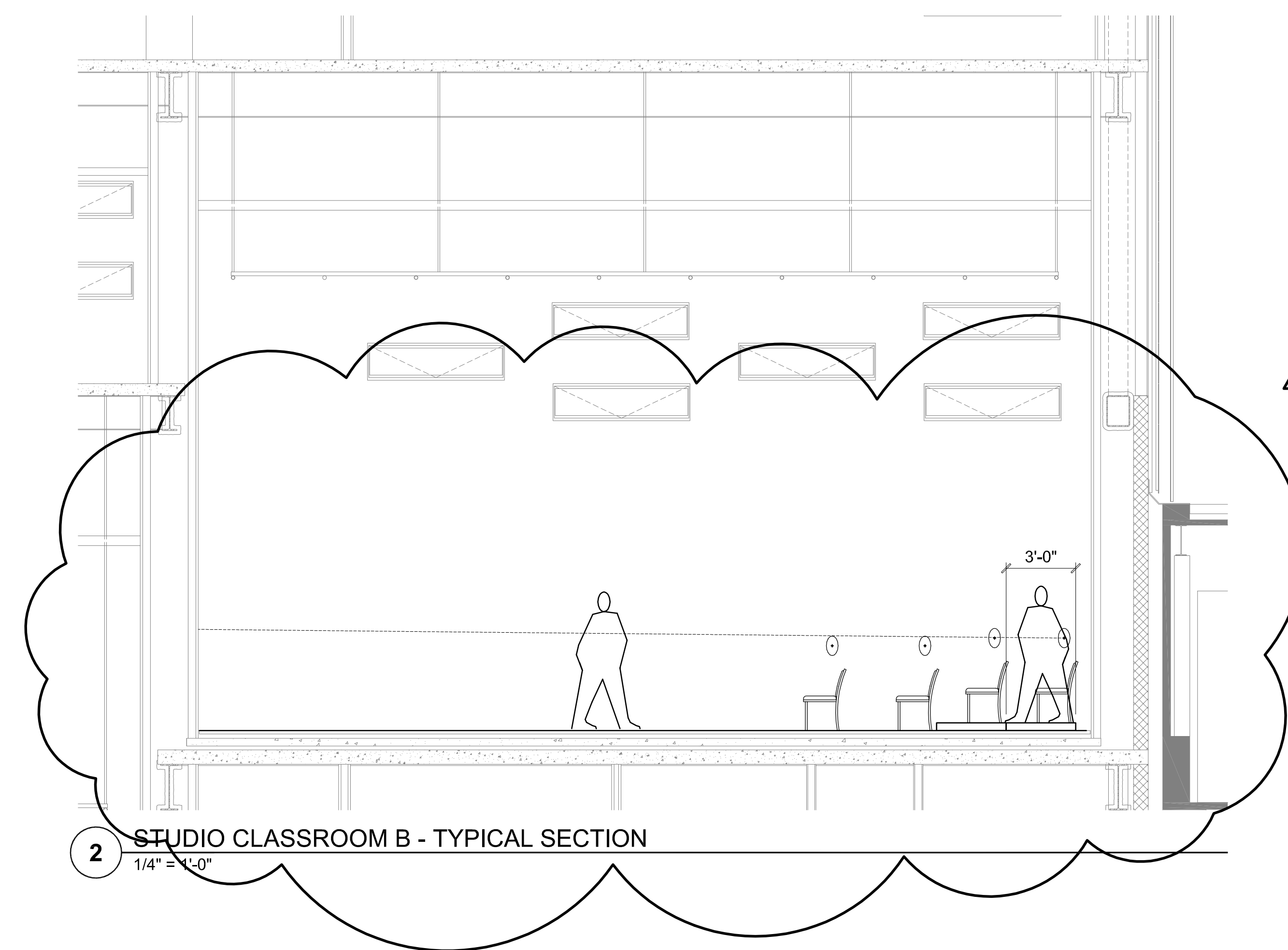
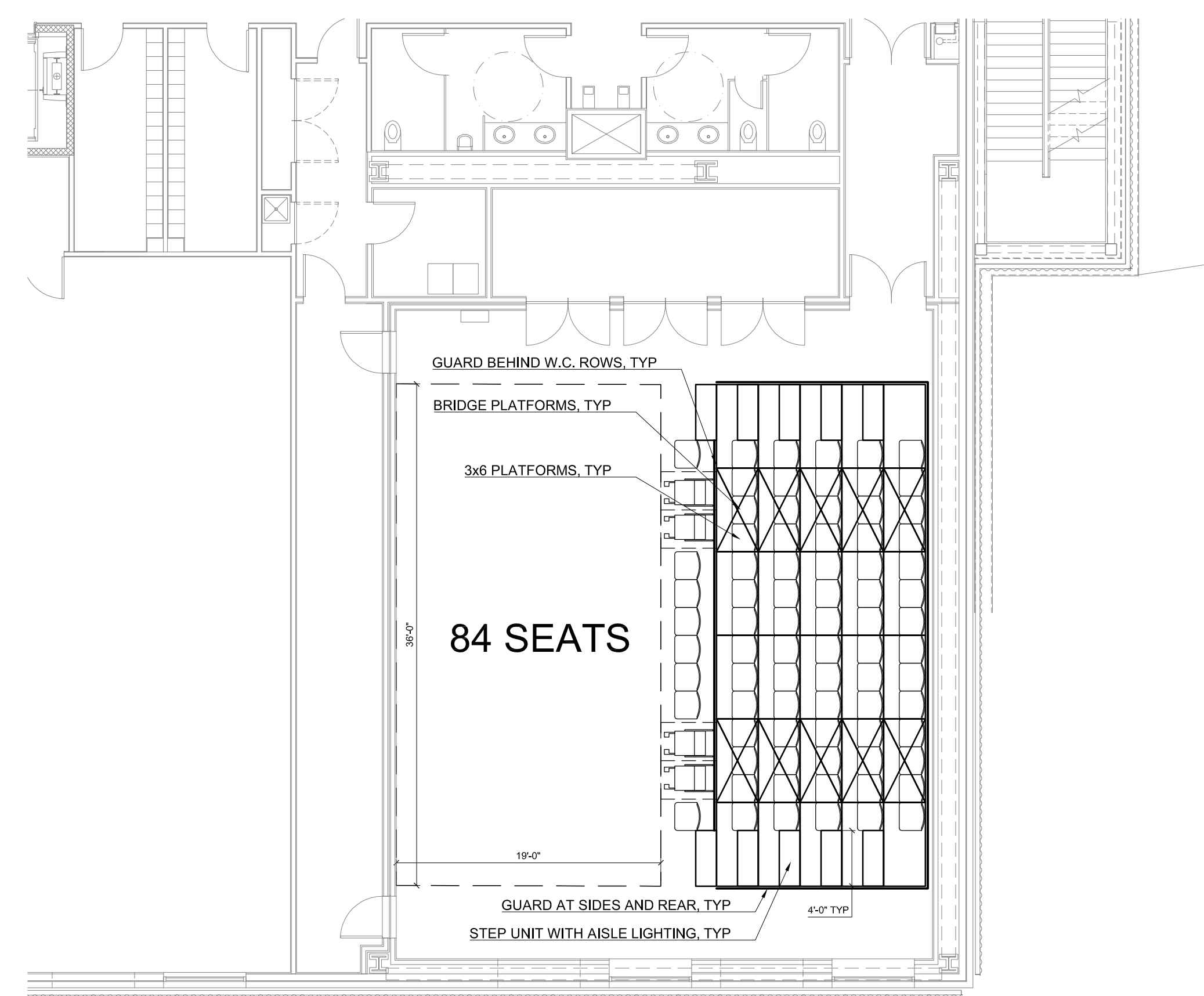


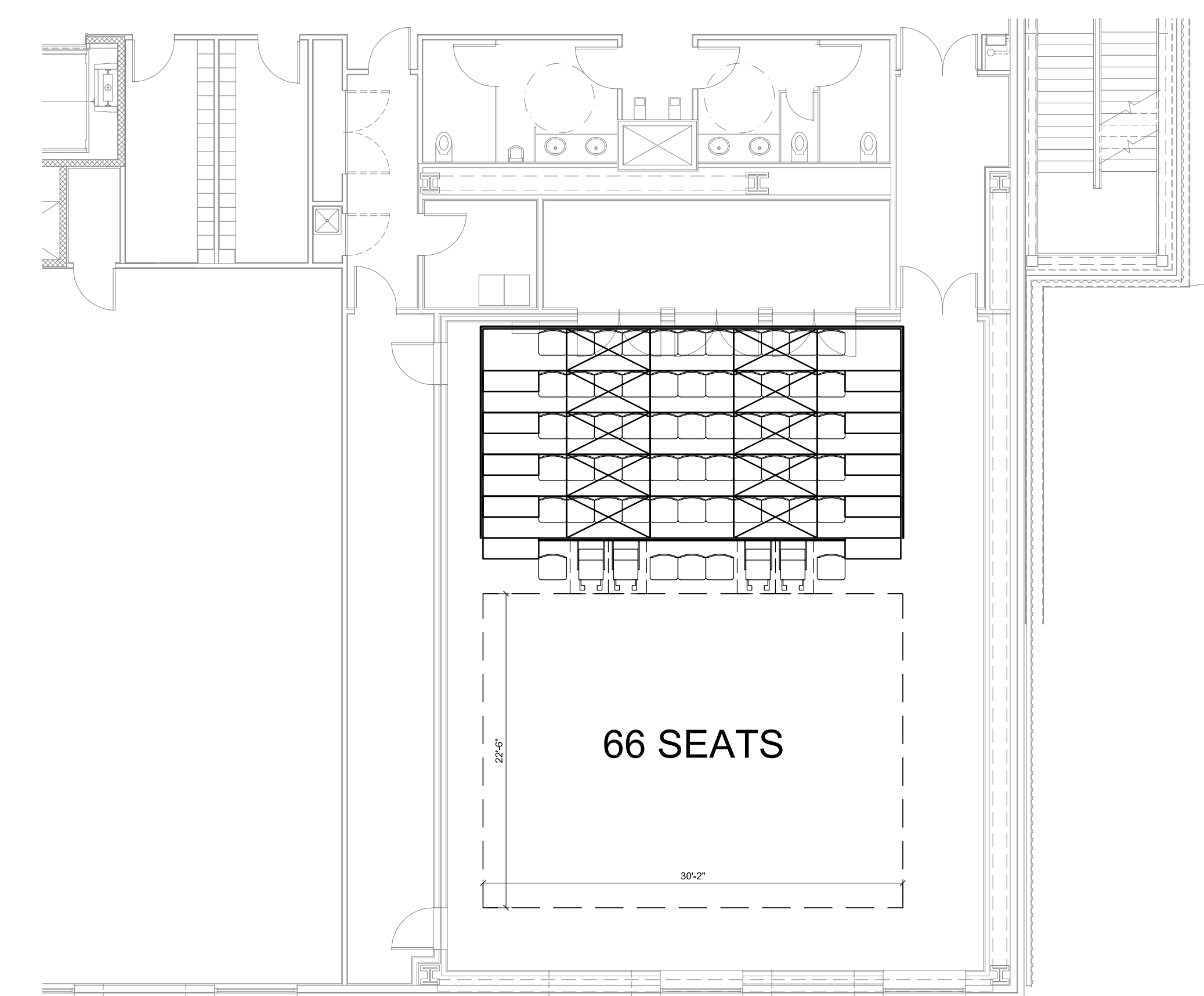
1 PERFORMANCE STUDIO - TYPICAL SECTION  
1/4" = 1'-0"



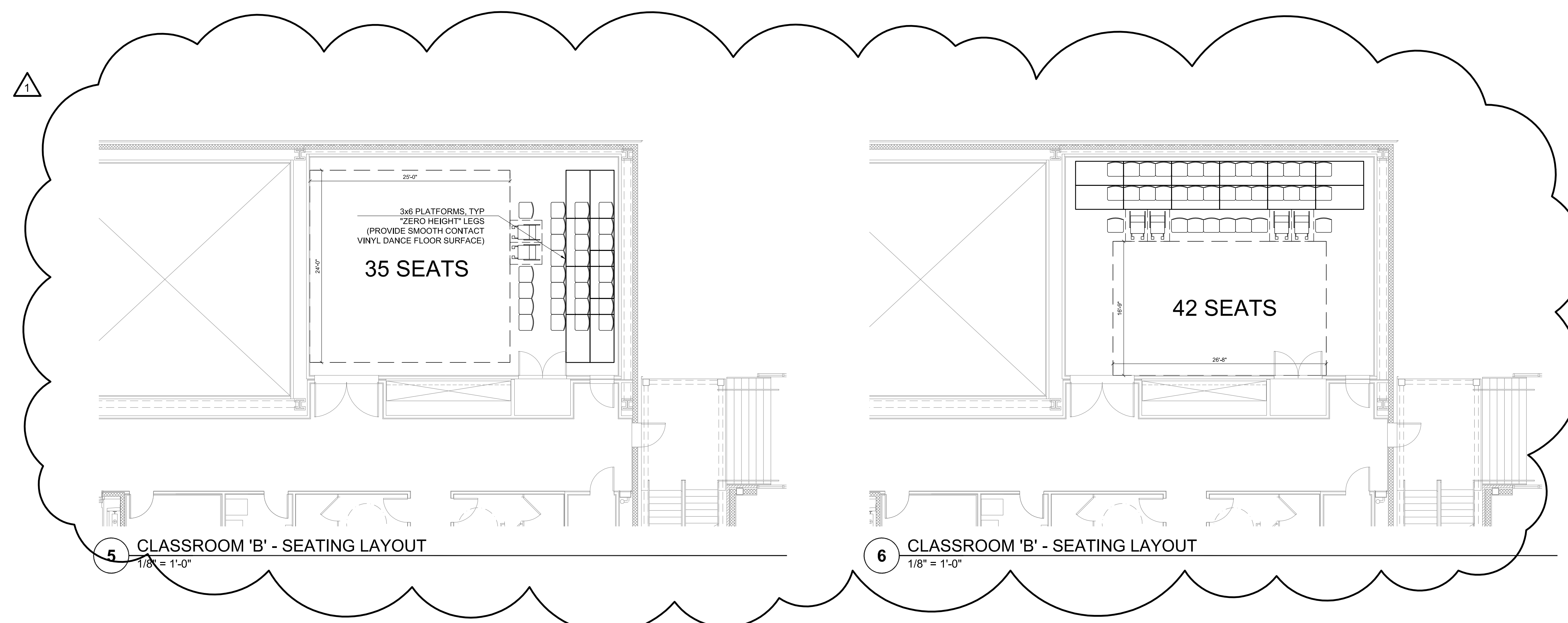
2 STUDIO CLASSROOM B - TYPICAL SECTION  
1/4" = 1'-0"



3 PERFORMANCE STUDIO - SEATING LAYOUT  
1/8" = 1'-0"



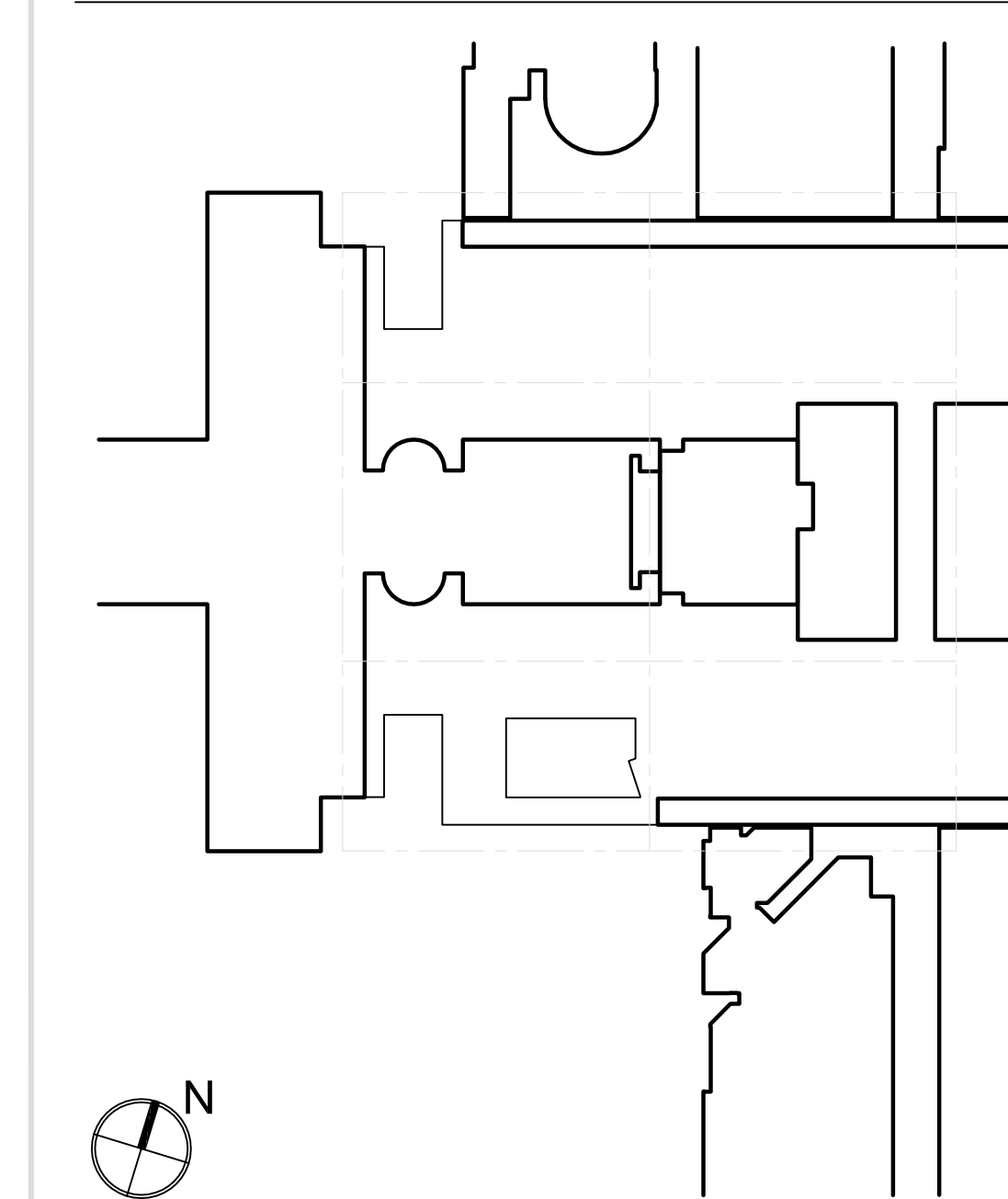
4 PERFORMANCE STUDIO - SEATING LAYOUT  
1/8" = 1'-0"



5 CLASSROOM 'B' - SEATING LAYOUT  
1/8" = 1'-0"

6 CLASSROOM 'B' - SEATING LAYOUT  
1/8" = 1'-0"

PRELIMINARY -  
NOT FOR CONSTRUCTION



KEY PLAN

NO.	REVISIONS / SUBMISSIONS	DATE
1	GROUP 3	9.14.2017

**FX FOWLE**

FX FOWLE ARCHITECTS, LLP 122 WEST 18TH STREET | NEW YORK, NY 10011 | 212.627.1900 | 212.452.8716 | WWW.FX FOWLE.COM

- STRUCTURAL ENGINEER  
DESIMONE CONSULTING ENGINEERS  
18 West 18th Street, 10th Floor, New York, NY 10011 212-532-2211
- MECHANICAL, ELECTRICAL, PLUMBING, FIRE PROTECTION ENGINEER  
COLLADO ENGINEERING  
115 South Broadway, Fairport, NY 10521 514-332-7658
- THEATER PLANNING CONSULTANT  
FISHER DACHS ASSOCIATES  
22 West 18th Street, 8th Floor, New York, NY 10011 212-691-3020
- ACoustics & AUDIO VISUAL CONSULTANT  
CERAMIC & ASSOCIATES  
404 Fifth Avenue, New York, NY 10018 212-376-1776
- LIGHTING CONSULTANT  
ILLUMINATION ARTS  
625 Broadway Avenue, Suite 101, Bloomfield NJ 07003 973-771-1506
- LANDSCAPE CONSULTANT  
W ARCHITECTURE & LANDSCAPE ARCHITECTURE, LLC  
155 Fifth Avenue Third Floor New York, NY 10019 P 212-691-3033 F 212-620-0756
- CIVIL ENGINEER  
LANGAN  
21 Penn Plaza 360 West 31st Street 8th Floor New York, NY 10001 212-479-5400 212-479-5444 (fax)
- ELEVATOR CONSULTANT  
VDA (VAN DEUSEN & ASSOCIATES)  
Seven Penn Plaza, Suite 401 New York, NY 10001 Phone: 212-668-9090 Fax: 212-668-9099
- COST ESTIMATING CONSULTANT  
TOSCANO CLEMENTS TAYLOR, LLC  
16 Oakwood Road Huntington, NY 11743 T 516.392.1601 F 516.392.1599

C.I.T.L. PROJ. # 29402  
SUNY PURCHASE COLLEGE  
735 ANDERSON HILL ROAD | PURCHASE, NY 10577

DRAWING TITLE:  
**SEATING PLATFORMS  
SEATING LAYOUTS**

Drawn:	Checked:	Reviewed:	Date:
MB	TP	AS	9.14.2017
Project No.:	Client File:	Drawing No.:	Scale:
			AS SHOWN

SEATS AND SEAT COUNTS SHOWN  
FOR REFERENCE ONLY

DP102.0