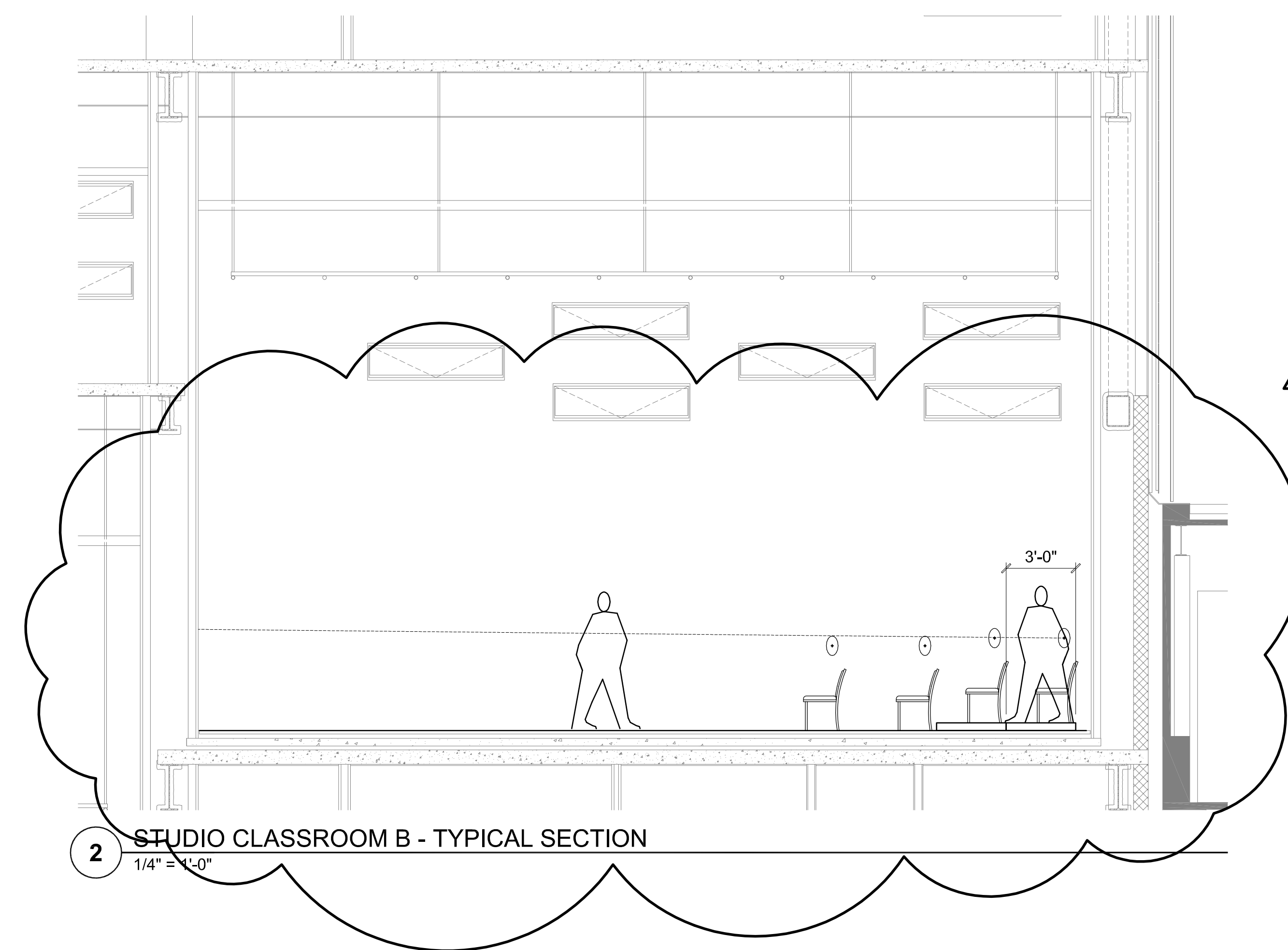
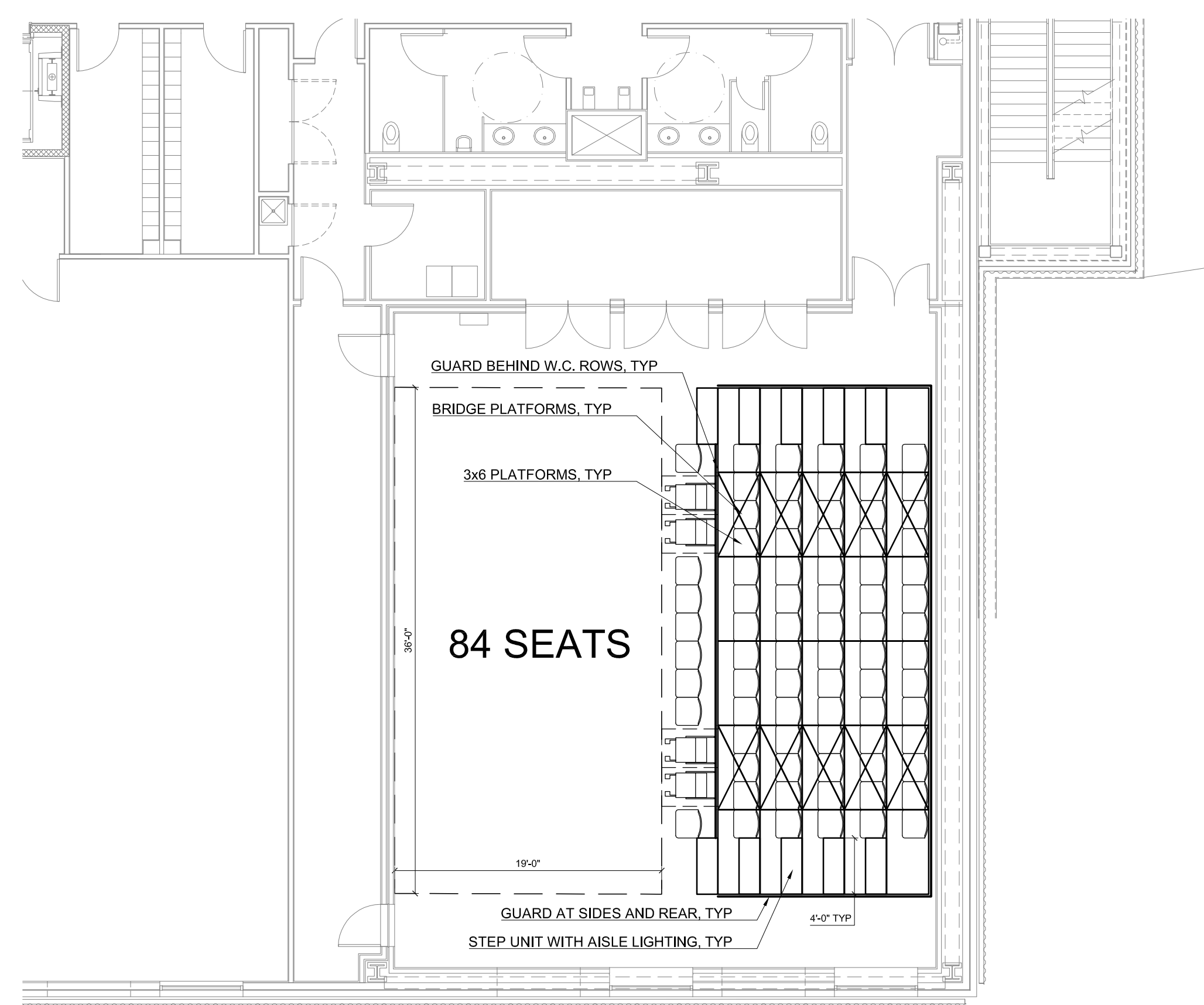


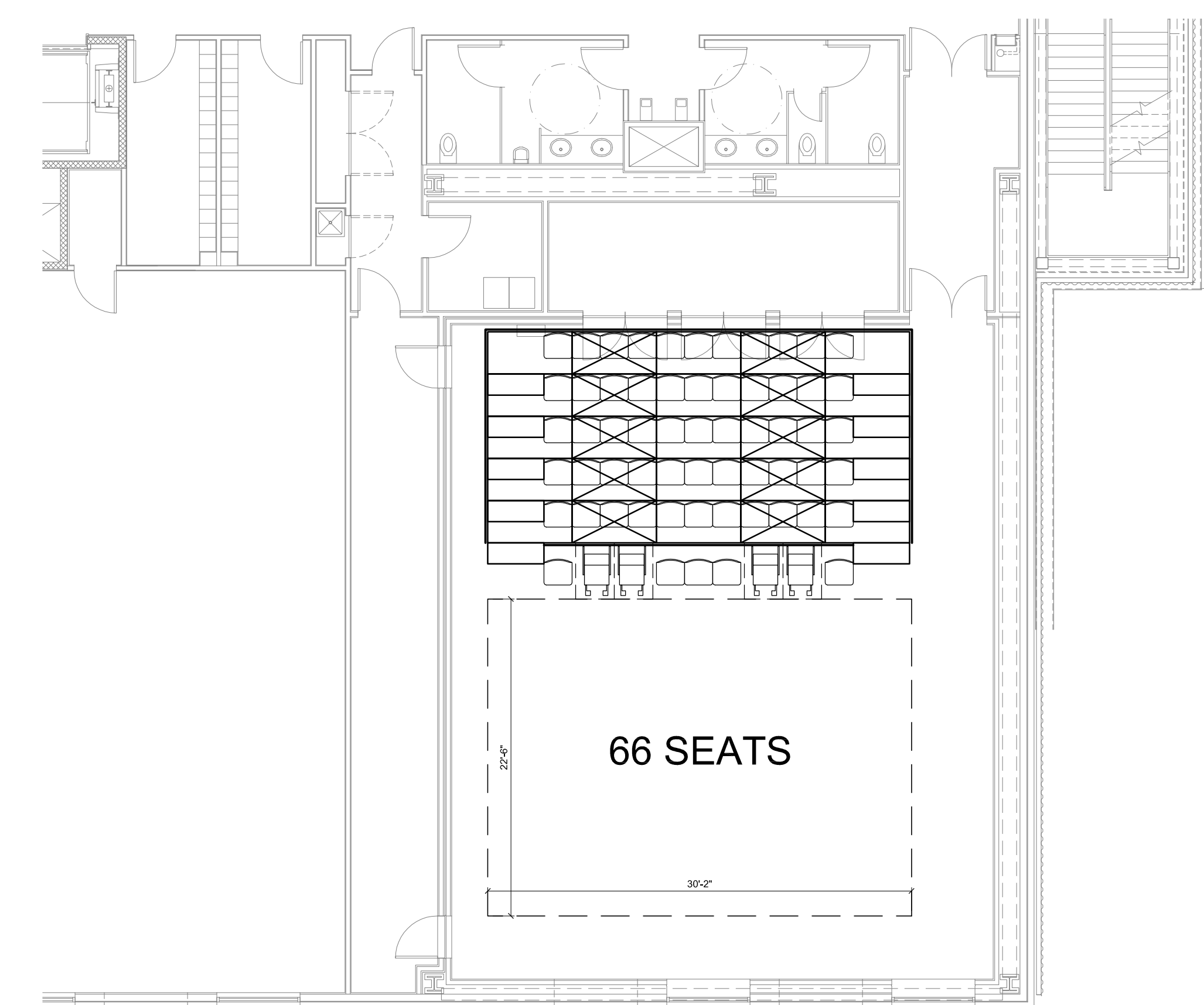
1 PERFORMANCE STUDIO - TYPICAL SECTION
1/4" = 1'-0"



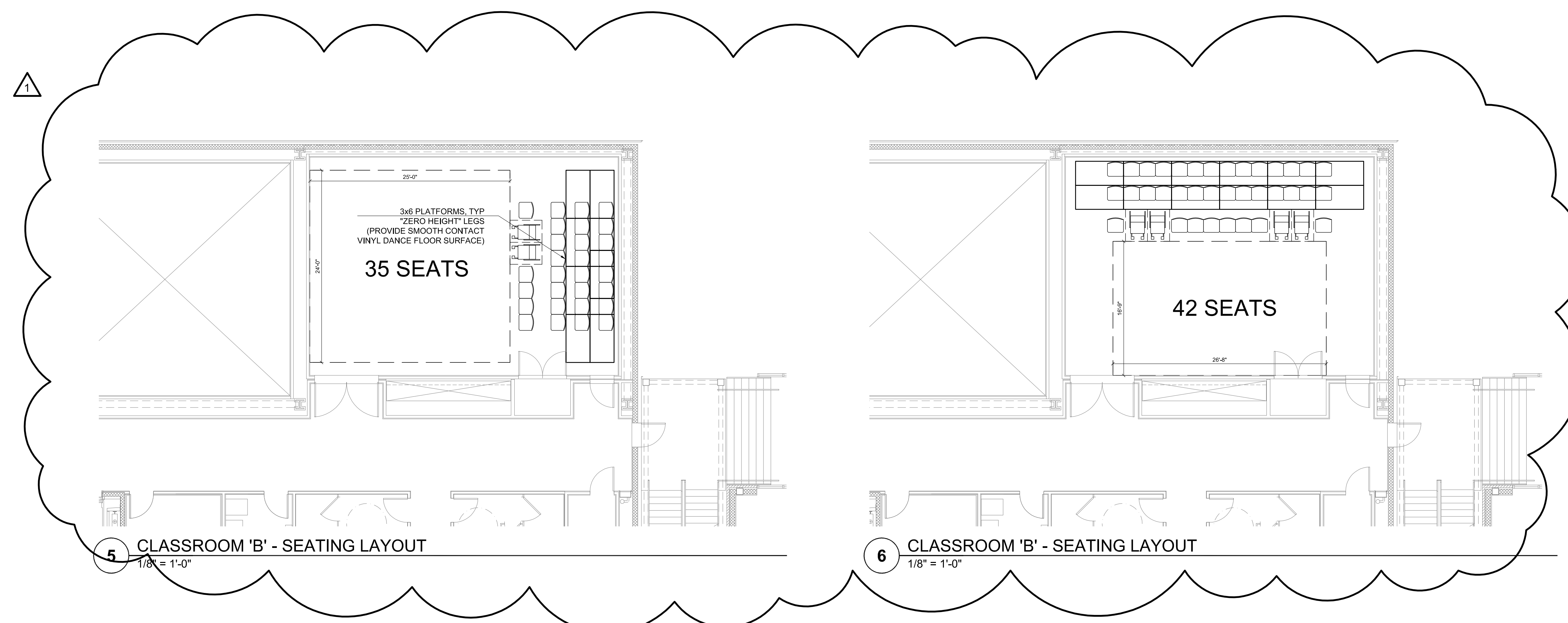
2 STUDIO CLASSROOM B - TYPICAL SECTION
1/4" = 1'-0"



3 PERFORMANCE STUDIO - SEATING LAYOUT
1/8" = 1'-0"



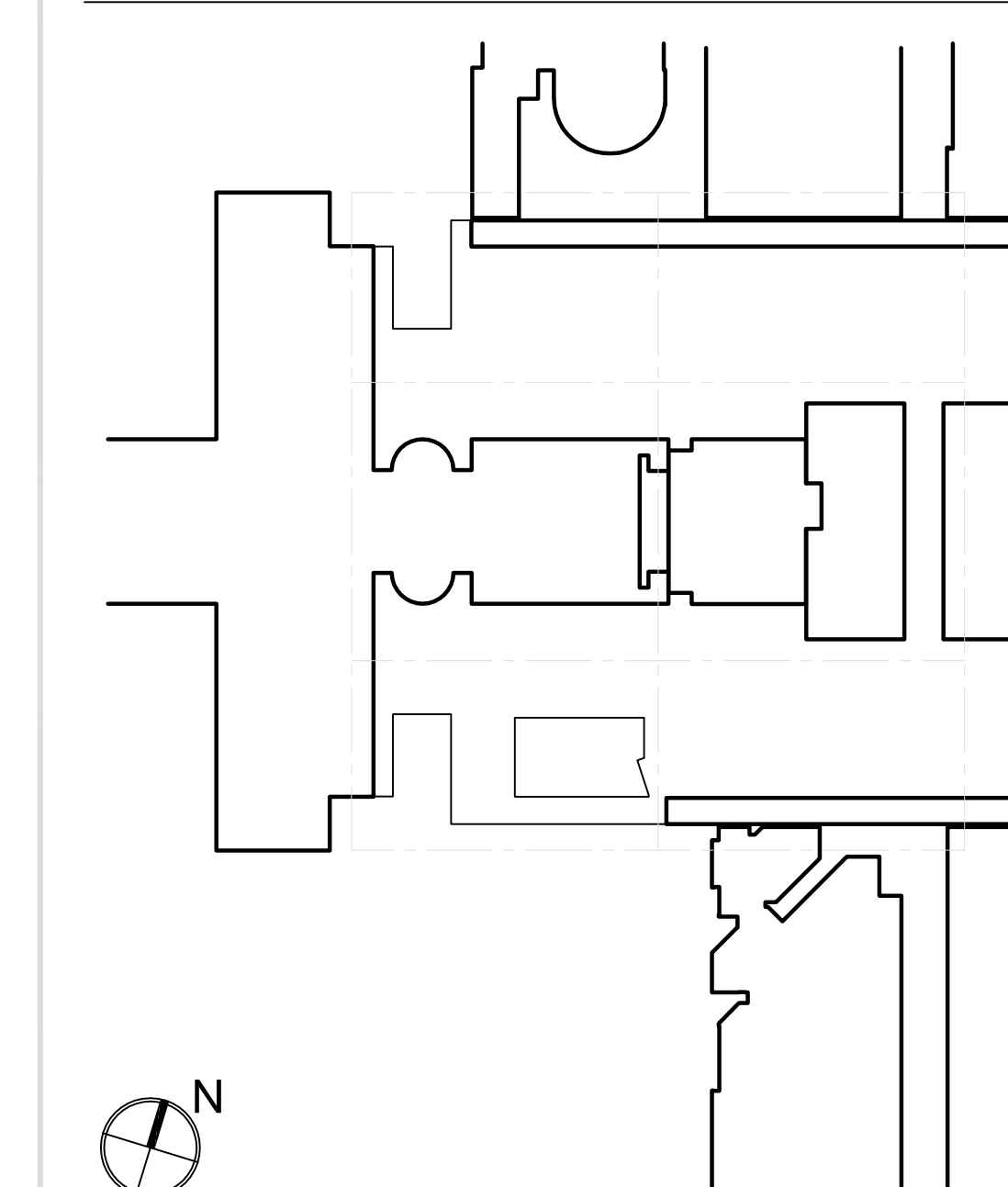
4 PERFORMANCE STUDIO - SEATING LAYOUT
1/8" = 1'-0"



5 CLASSROOM 'B' - SEATING LAYOUT
1/8" = 1'-0"

6 CLASSROOM 'B' - SEATING LAYOUT
1/8" = 1'-0"

PRELIMINARY -
NOT FOR CONSTRUCTION



KEY PLAN

NO.	REVISIONS / SUBMISSIONS	DATE
1	GROUP 3	9.14.2017

FX FOWLE

FX FOWLE ARCHITECTS, LLP 122 WEST 18TH STREET | NEW YORK, NY 10011 | 212.627.1900 | 212.452.8716 | WWW.FX FOWLE.COM

- STRUCTURAL ENGINEER
DESIMONE CONSULTING ENGINEERS
18 West 18th Street, 10th Floor, New York, NY 10011 212-532-2211
- MECHANICAL, ELECTRICAL, PLUMBING, FIRE PROTECTION ENGINEER
COLLADO ENGINEERING
115 South Broadway, Fairport, NY 10521 514-332-7658
- THEATER PLANNING CONSULTANT
FISHER DACHS ASSOCIATES
22 West 18th Street, 8th Floor, New York, NY 10011 212-691-3020
- ACoustics & AUDIO VISUAL CONSULTANT
CERAMIC & ASSOCIATES
404 Fifth Avenue, New York, NY 10018 212-376-1776
- LIGHTING CONSULTANT
ILLUMINATION ARTS
625 Broadway Avenue, Suite 101, Bloomfield NJ 07003 973-771-1506
- LANDSCAPE CONSULTANT
W ARCHITECTURE & LANDSCAPE ARCHITECTURE, LLC
155 Fifth Avenue Third Floor New York, NY 10019 P 212-691-3033 F 212-620-0756
- CIVIL ENGINEER
LANGAN
21 Penn Plaza 360 West 31st Street 8th Floor New York, NY 10001 212-479-5400 212-479-5444 (fax)
- ELEVATOR CONSULTANT
VDA (VAN DEUSEN & ASSOCIATES)
Seven Penn Plaza, Suite 401 New York, NY 10001 Phone: 212-668-9099 Fax: 212-668-9099
- COST ESTIMATING CONSULTANT
TOSCANO CLEMENTS TAYLOR, LLC
16 Oakwood Road Huntington, NY 11743 T 631.392.1400 F 631.392.1399

C.I.T.L. PROJ. # 29402
SUNY PURCHASE COLLEGE
735 ANDERSON HILL ROAD | PURCHASE, NY 10577

DRAWING TITLE:
**SEATING PLATFORMS
SEATING LAYOUTS**

Drawn:	Checked:	Project No.:
MB	TP	
Reviewed:	Drawn:	Checked:
Date:	Scale:	AS SHOWN
9.14.2017		

SEATS AND SEAT COUNTS SHOWN
FOR REFERENCE ONLY

DP102.0