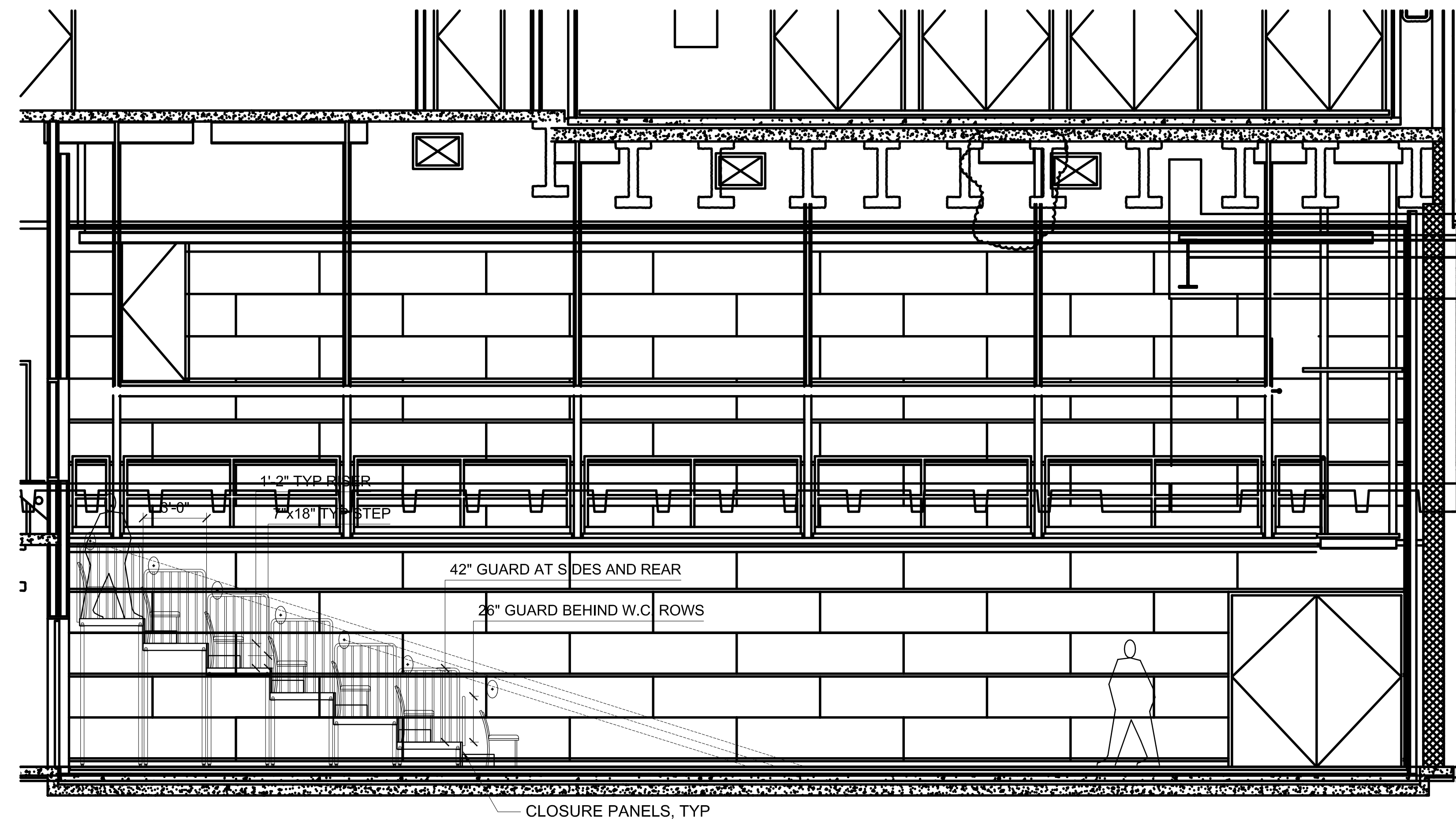
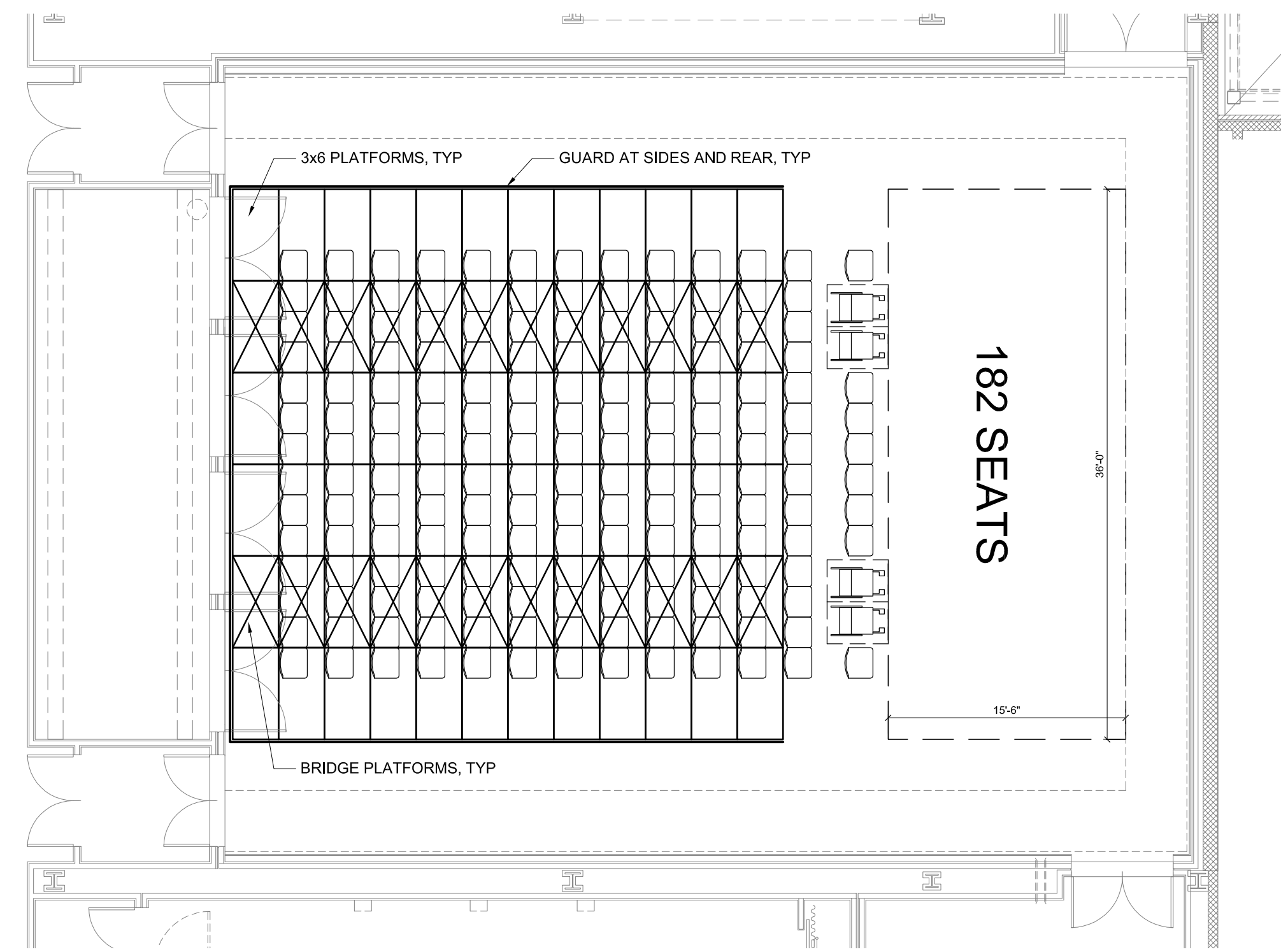


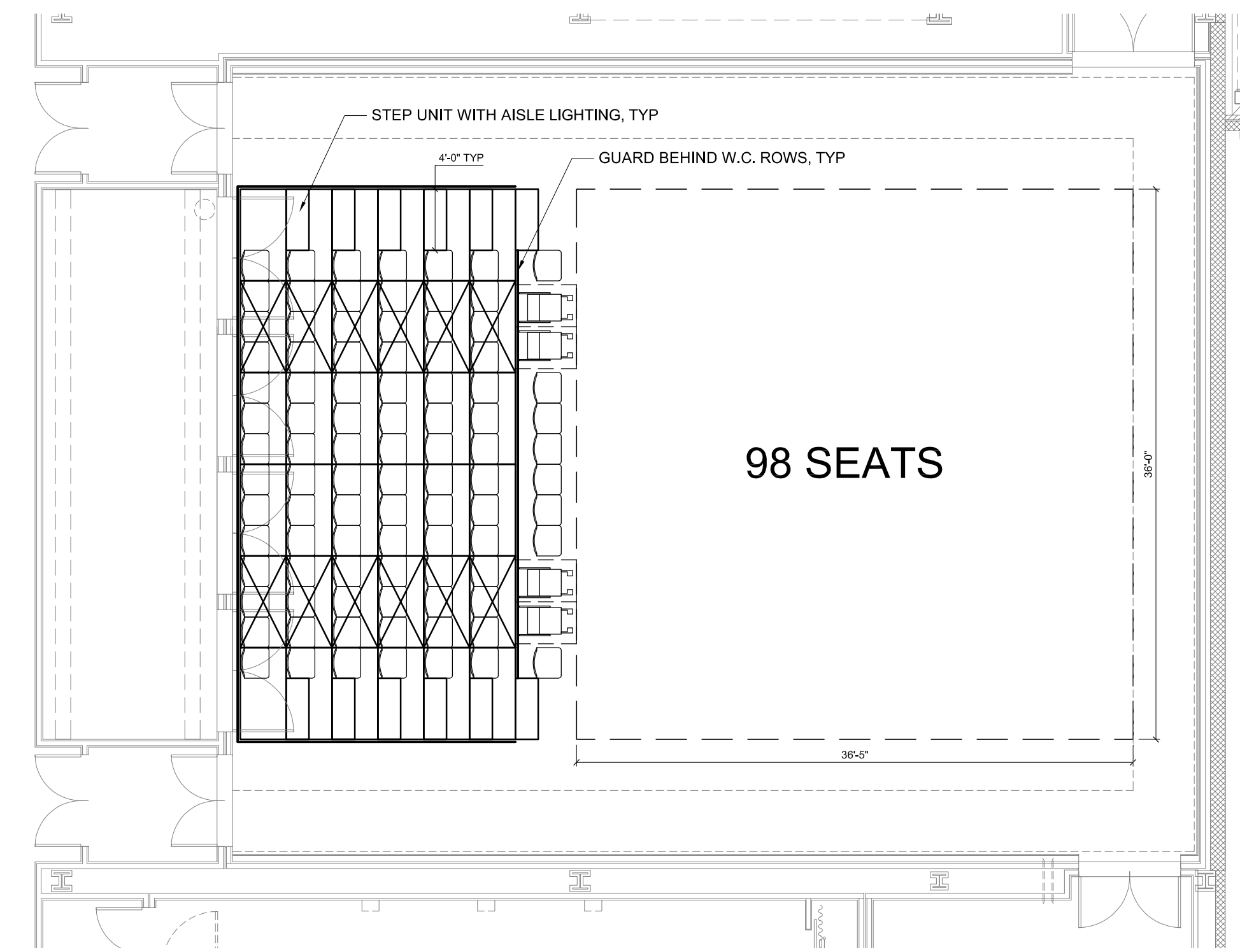
1 PERFORMANCE THEATRE - TYPICAL SECTION @ 10" RISERS  
1/4" = 1'-0"



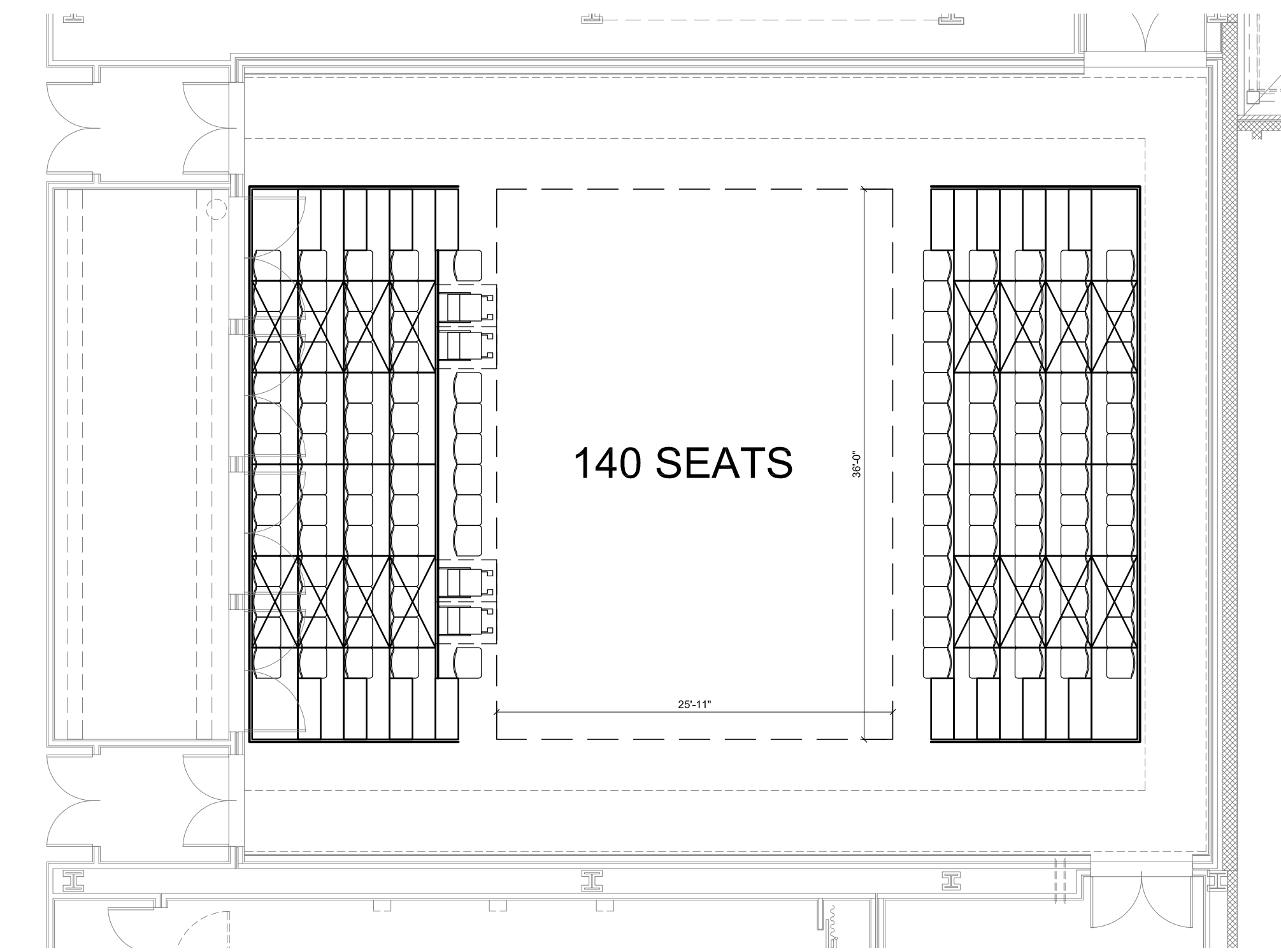
2 PERFORMANCE THEATRE - TYPICAL SECTION @ 20" RISERS  
1/4" = 1'-0"



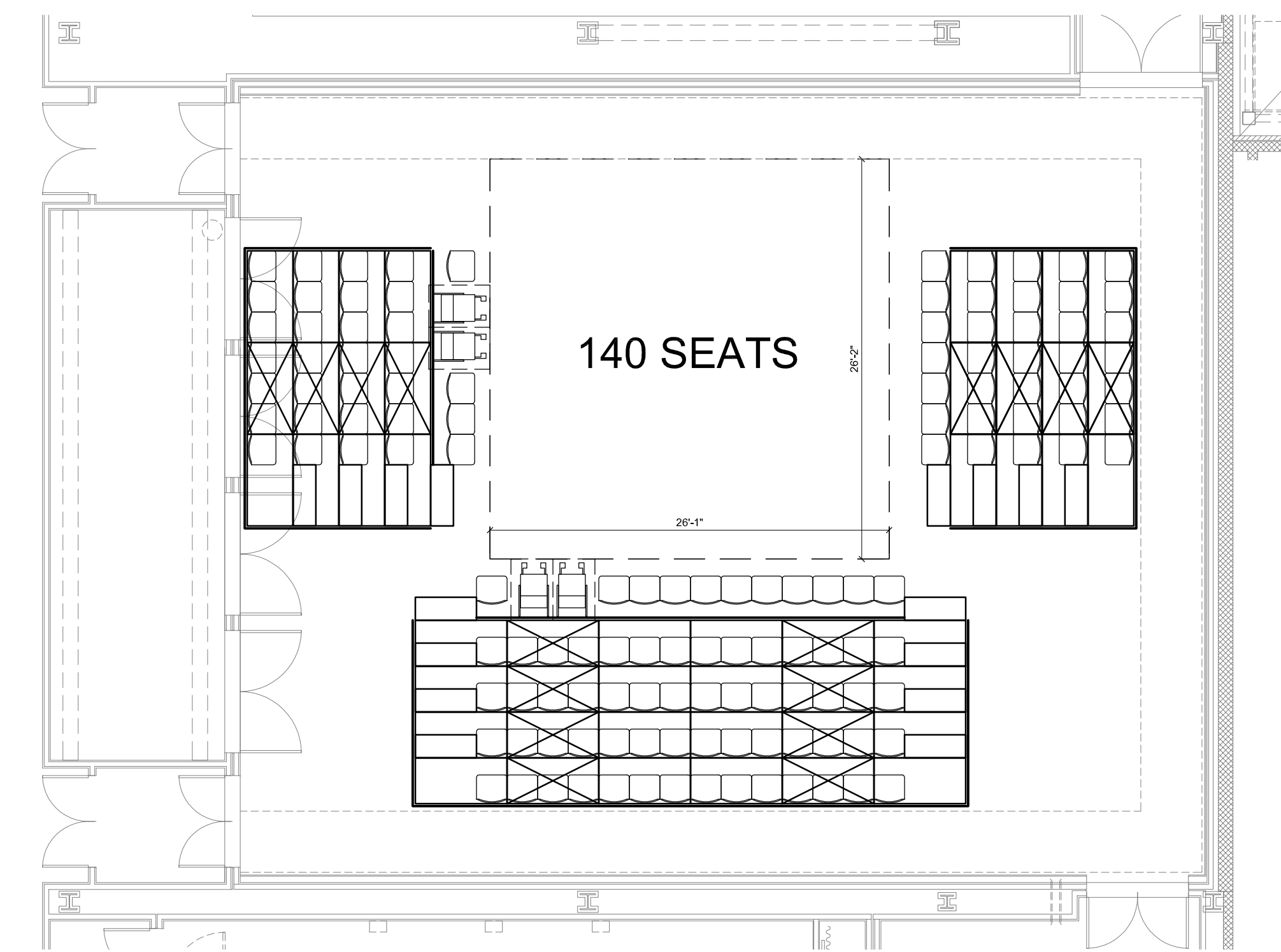
3 PERFORMANCE THEATRE - SEATING LAYOUT  
1/8" = 1'-0"



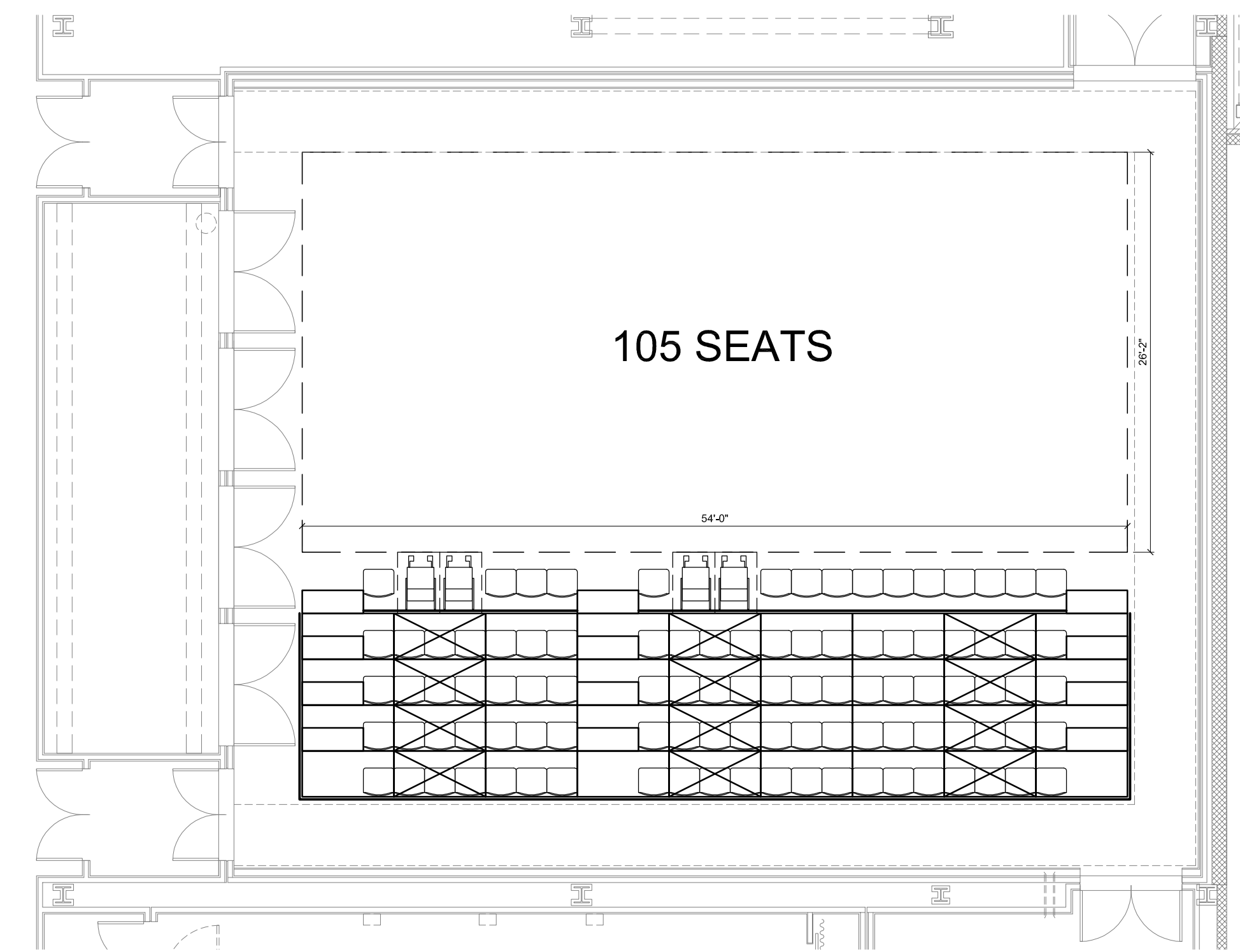
4 PERFORMANCE THEATRE - SEATING LAYOUT  
1/8" = 1'-0"



5 PERFORMANCE THEATRE - SEATING LAYOUT  
1/8" = 1'-0"

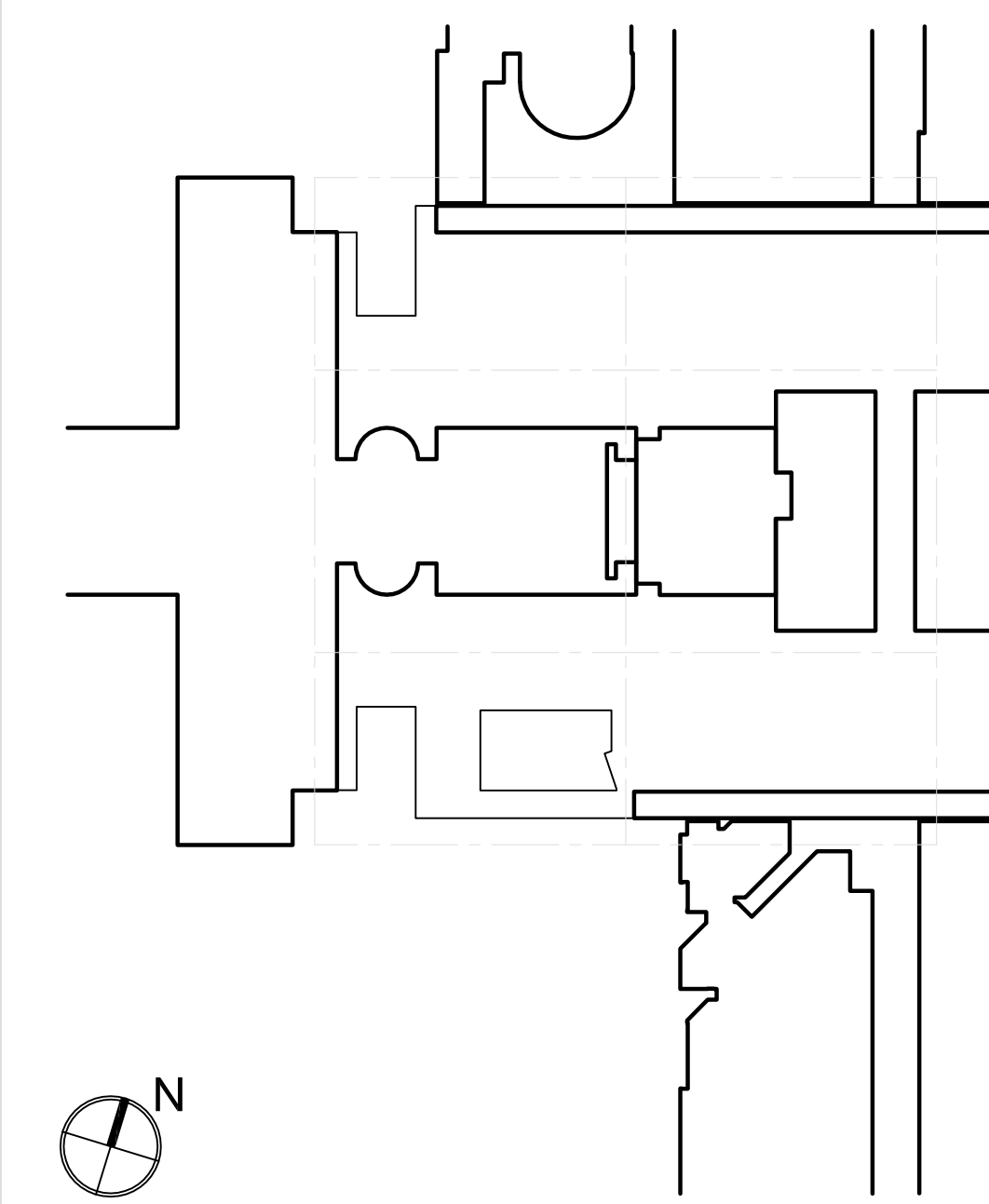


6 PERFORMANCE THEATRE - SEATING LAYOUT  
1/8" = 1'-0"



7 PERFORMANCE THEATRE - SEATING LAYOUT  
1/8" = 1'-0"

PRELIMINARY -  
NOT FOR CONSTRUCTION



KEY PLAN

NO.	REVISIONS / SUBMISSIONS	DATE
1	GROUP 3	9.14.2017

**FX FOWLE**  
FX FOWLE ARCHITECTS, LLP 122 WEST 18TH STREET | NEW YORK, NY 10011 | 212.627.1900 | 212.452.8716 | WWW.FXFOWLE.COM

- STRUCTURAL ENGINEER:  
DESIMONE CONSULTING ENGINEERS  
18 West 18th Street, 10th Floor, New York, New York 10011 212-532-2211
- MECHANICAL, ELECTRICAL, PLUMBING, FIRE PROTECTION ENGINEER:  
COLLADO ENGINEERING  
115 South Broadway, Fairport, NY 10521 514-332-7658
- THEATER PLANNING CONSULTANT:  
FISHER DACHS ASSOCIATES  
22 West 18th Street, 8th Floor, New York, NY 10011 212-691-3020
- ACoustics & AUDIO VISUAL CONSULTANT:  
CERAMI & ASSOCIATES  
404 Fifth Avenue, New York, NY 10018 212-376-1776
- LIGHTING CONSULTANT:  
ILLUMINATION ARTS  
628 Broadway Avenue, Suite 110, Bloomfield NJ 07003 973-771-1506
- LANDSCAPE ARCHITECT:  
W ARCHITECTURE & LANDSCAPE ARCHITECTURE, LLC  
155 Fifth Avenue Third Floor New York, NY 10019 P 212-691-3833 F 212-620-0756
- CIVIL ENGINEER:  
LANGAN  
21 Penn Plaza 360 West 31st Street 8th Floor New York, NY 10001 212-479-5400 212-479-5444 (fax)
- ELEVATOR CONSULTANT:  
VDA (VAN DEUSEN & ASSOCIATES)  
Seven Penn Plaza, Suite 601 New York, NY 10019 Phone: 212-668-9099 Fax: 212-668-9099
- COST ESTIMATING CONSULTANT:  
TOSCANO CLEMENTES TAYLOR, LLC  
16 Oakwood Road Huntington, NY 11743 T 631-392-1400 F 631-392-1399

C.I.T.L. PROJ. # 29402  
SUNY PURCHASE COLLEGE  
735 ANDERSON HILL ROAD | PURCHASE, NY 10577

DRAWING TITLE:  
**PERFORMANCE THEATRE  
SEATING PLATFORMS**

Soat	Drawn:	Project No.:
	MB	
	Checked:	Client No.:
	TP	
	Reviewed:	Drawing No.:
	Date:	
	9.14.2017	
	Scale:	
	AS SHOWN	

SEATS AND SEAT COUNTS SHOWN  
FOR REFERENCE ONLY

DP101.0