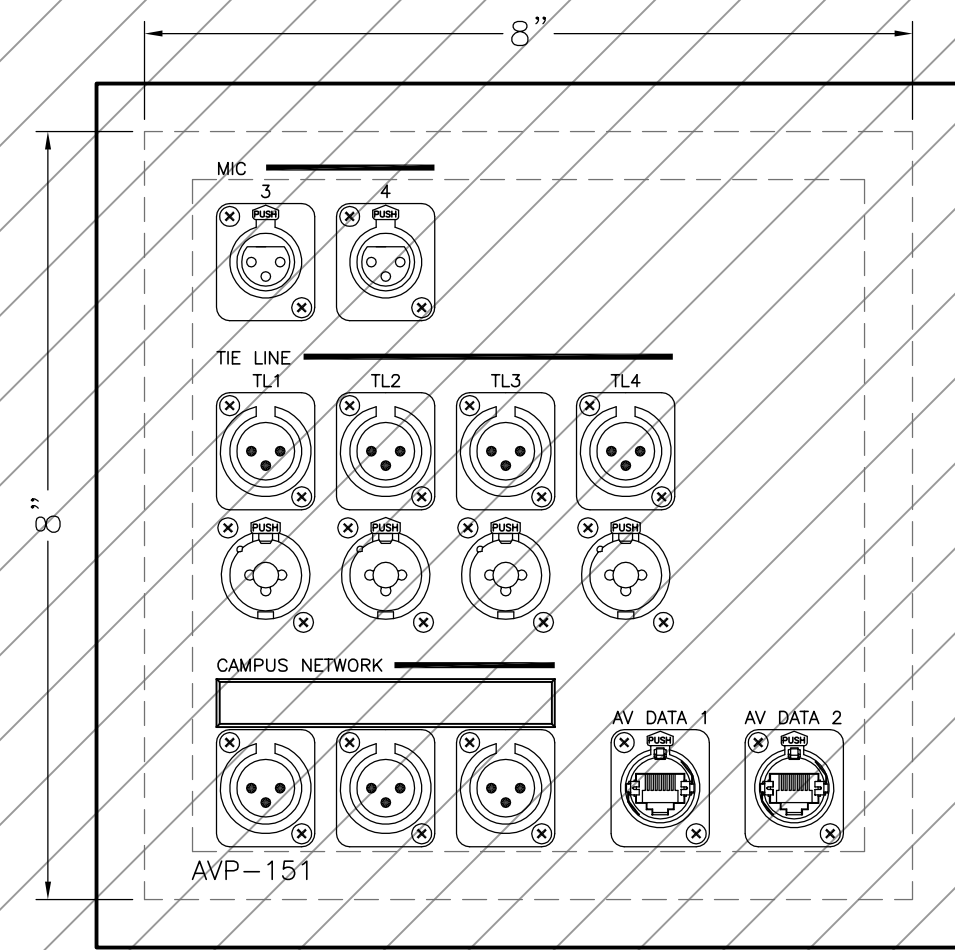
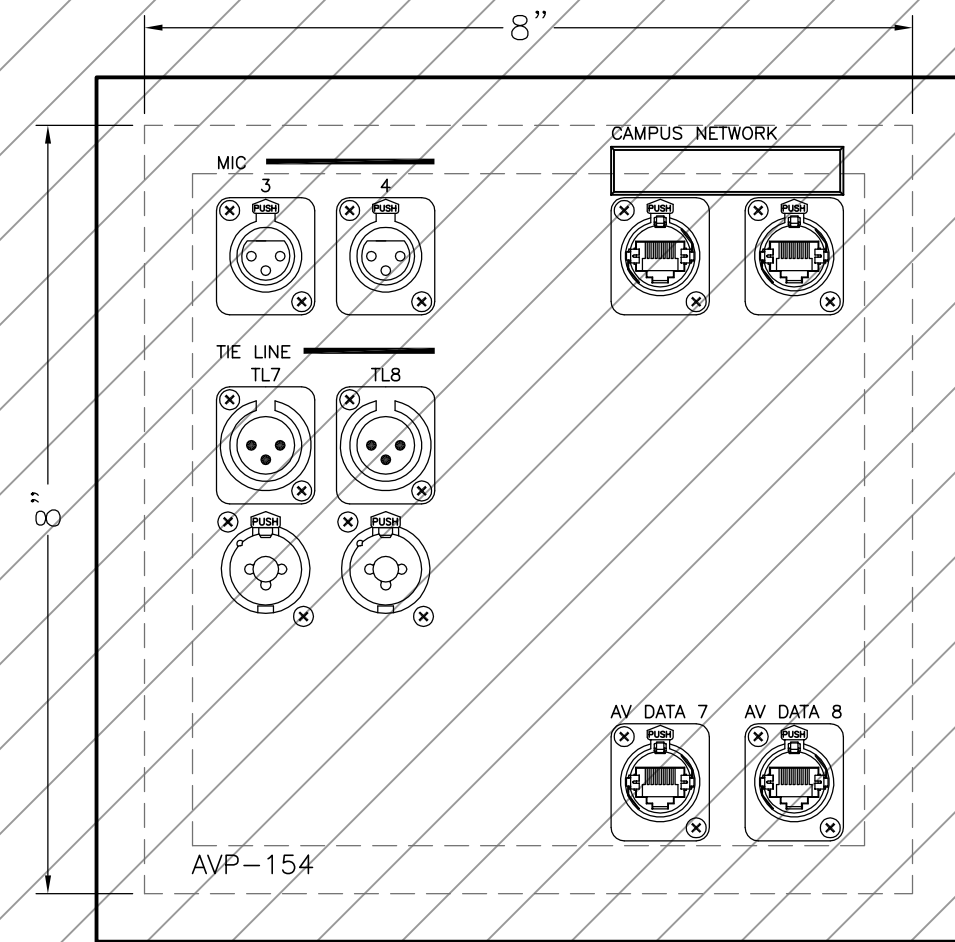


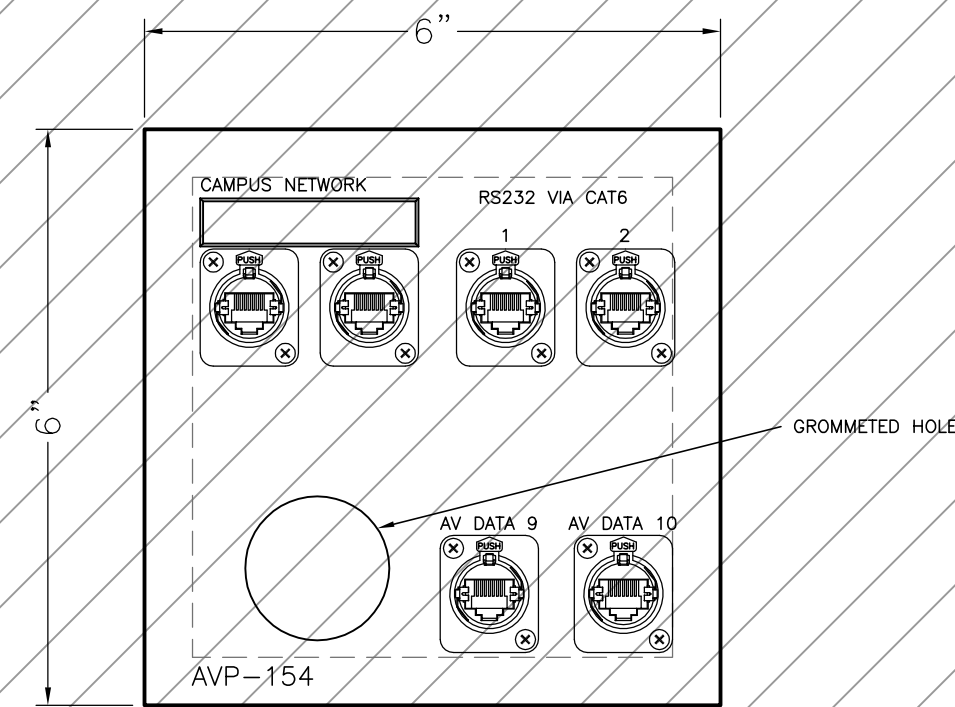
EQUIPMENT SHOWN WITH THIS BACKGROUND HATCH PATTERN IS PROVIDED PER BASE INFRASTRUCTURE CONTRACT (NOT INCLUDED IN GROUP III AV SYSTEMS OR EXTENDED AV INFRASTRUCTURE CONTRACT).



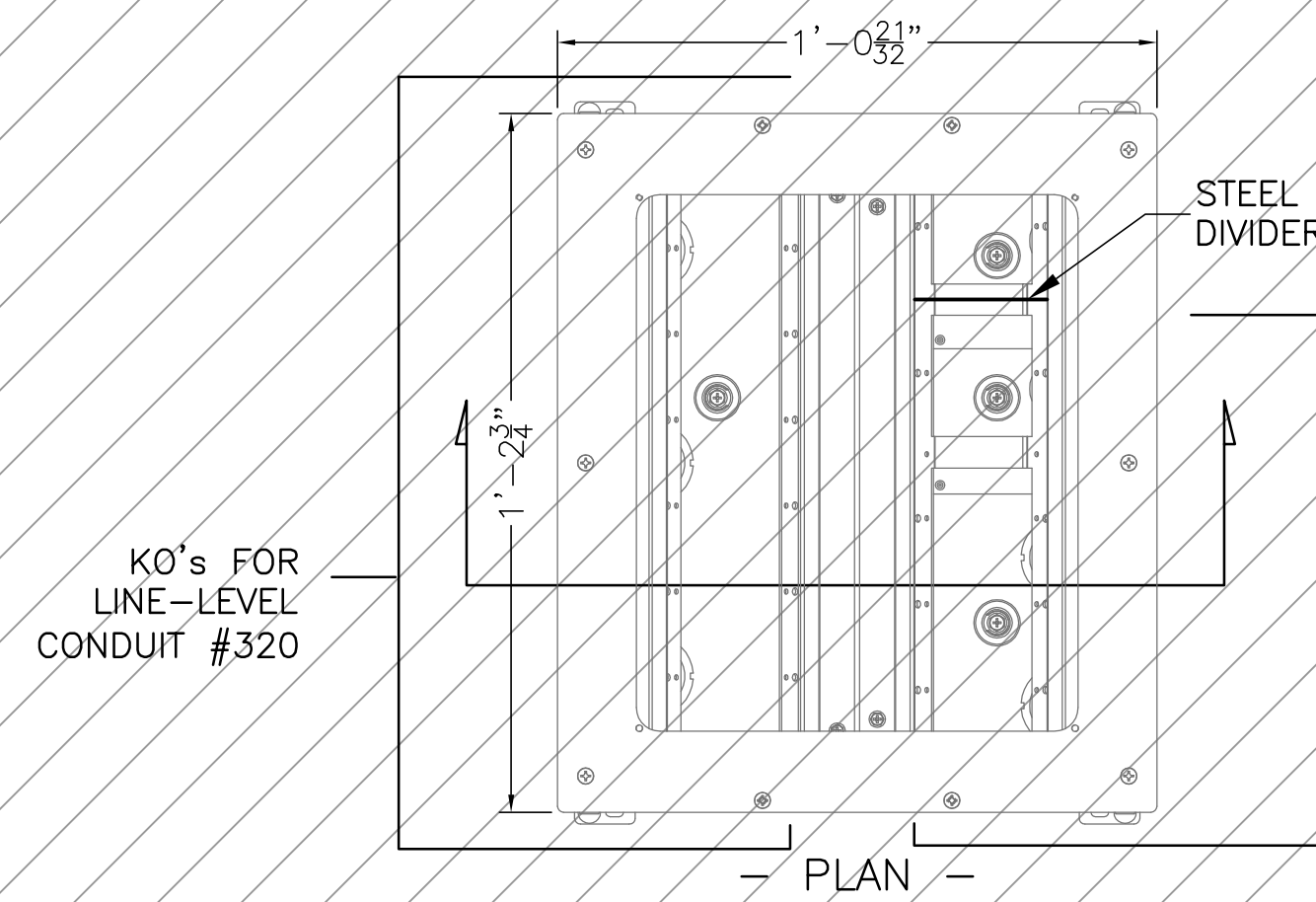
AVP-151 LECTURE HALL
Flush-Mount Box



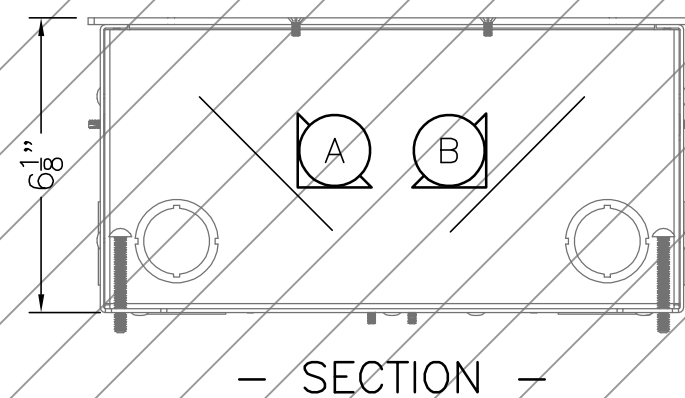
AVP-154 LECTURE HALL
Flush-Mount Box



AVP-155 LECTURE HALL
Surface-Mount Box
in Projector Niche

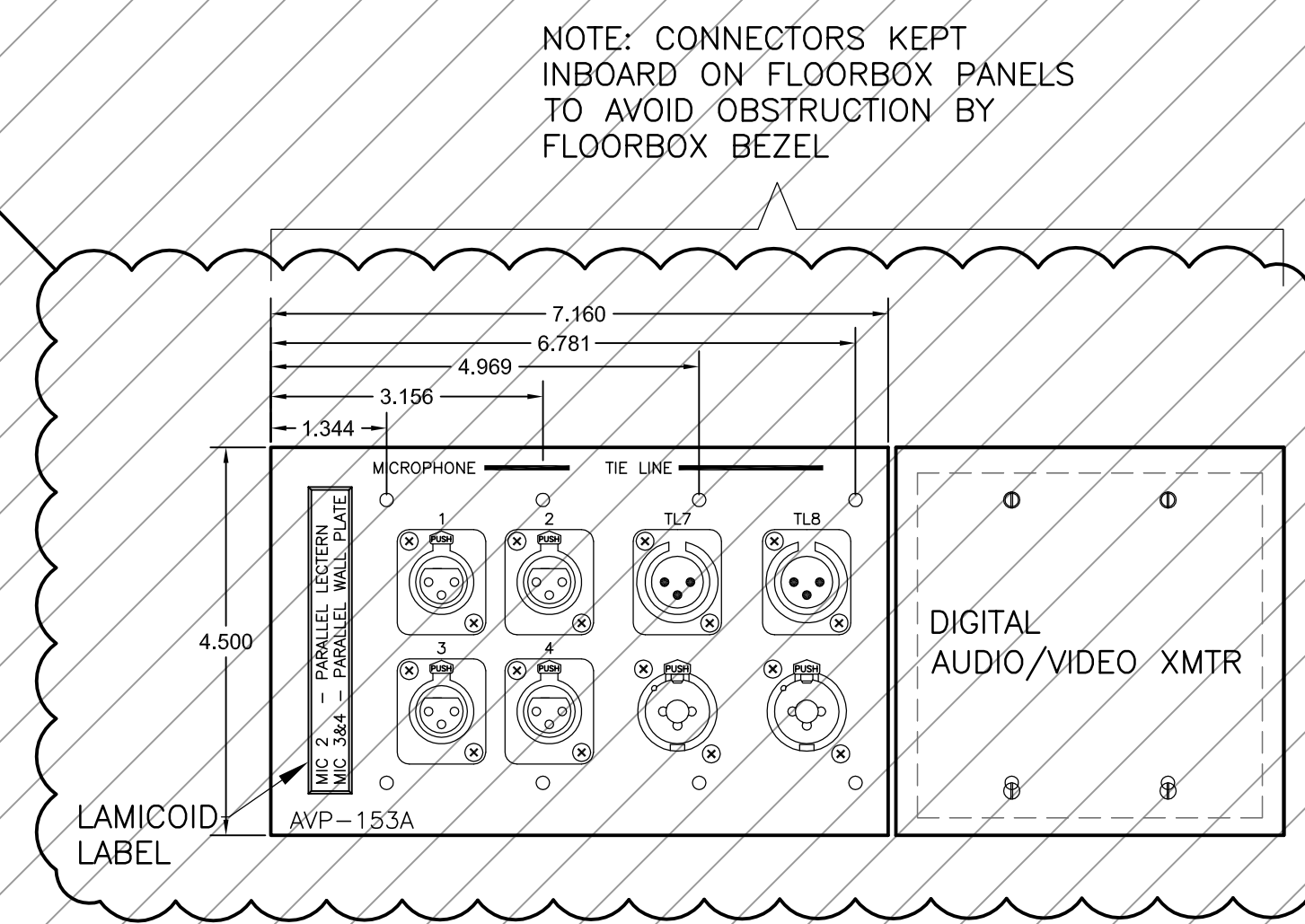


AVP-153 FLOORBOX: WIREMOLD RFB11



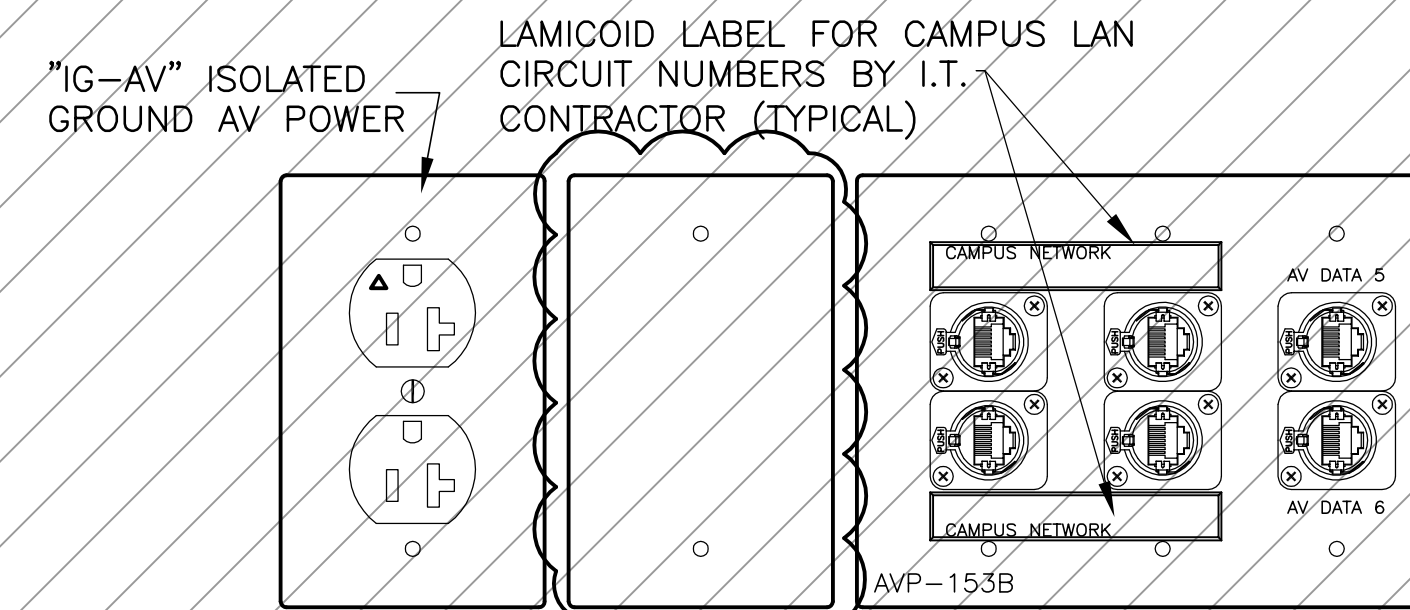
KO's FOR
LINE-LEVEL
CONDUIT #320

KO's FOR LAN
CONDUIT #325 AND
VID/DATA CONDUIT
#320



AVP-153A FLOOR BOX

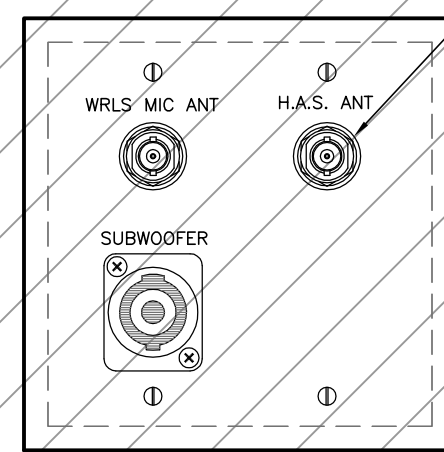
NOTE: CONNECTORS KEPT
INBOARD ON FLOORBOX PANELS
TO AVOID OBSTRUCTION BY
FLOORBOX BEZEL



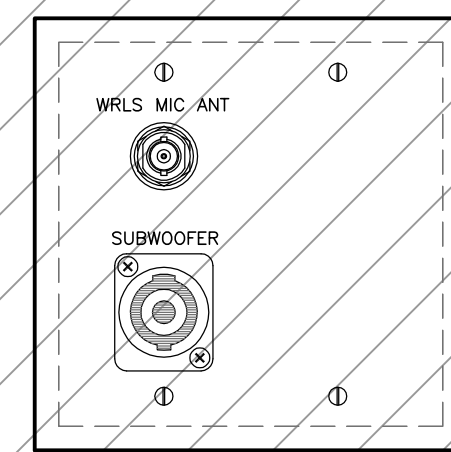
AVP-153B FLOOR BOX

"IG-AV" ISOLATED
GROUND AV POWER

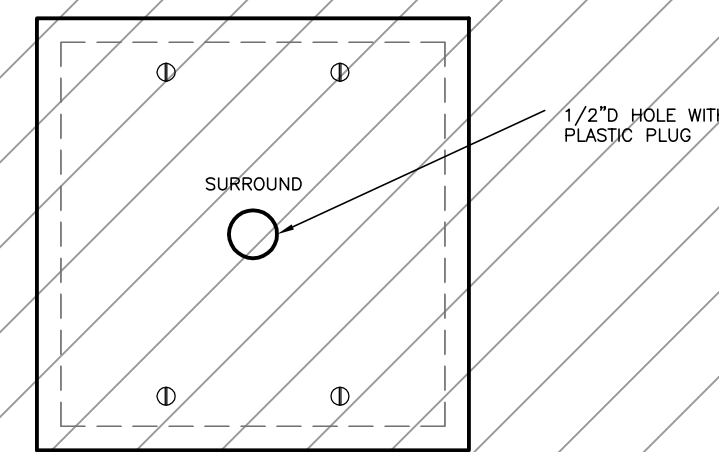
LAMICOID LABEL FOR CAMPUS LAN
CIRCUIT NUMBERS BY I.T.
CONTRACTOR (TYPICAL)



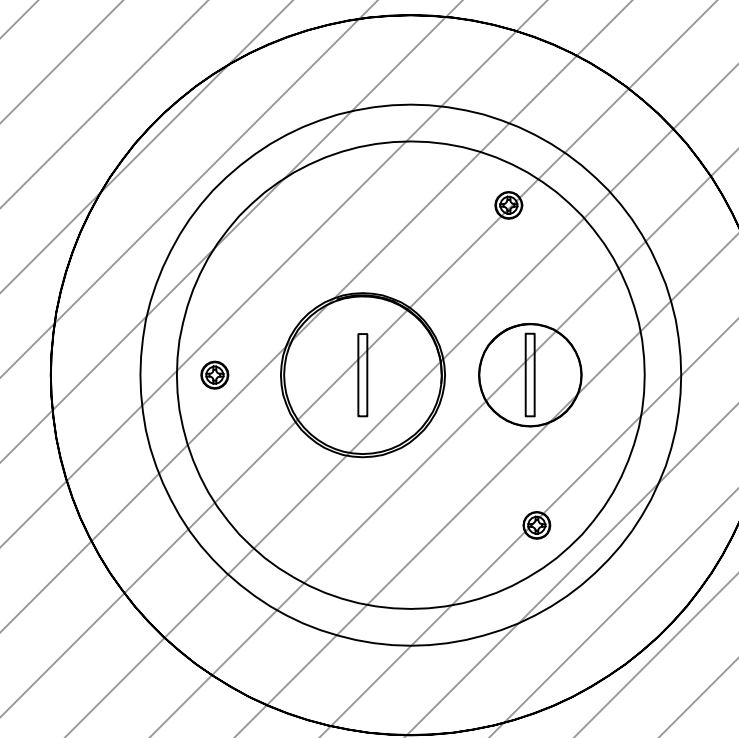
JBS-4 (NORTH)
2-Gang;
Flush-Mount Box



JBS-4 (SOUTH)
2-Gang;
Flush-Mount Box

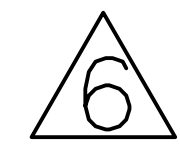


JBS-6 (TYP. OF 6)
2-Gang;
Flush-Mount Box



AVP-152 SHALL BE WIREMOLD 4FFATC WITH 4FFCTC COVER (VERIFY FINISH); PROVIDE CONDUIT ACCESS ADAPTORS AT BOTTOM AS NEEDED.

PANELS ON THIS SHEET BY AV
INFRASTRUCTURE



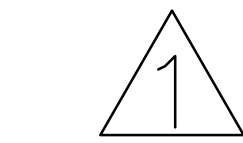
6/27/2014 AV MISC. CHANGES



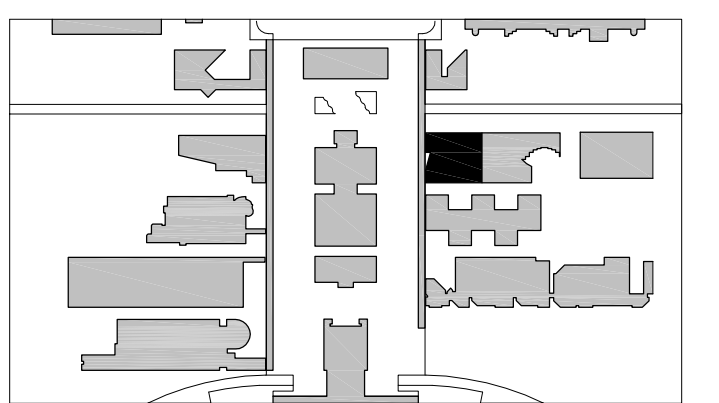
GROUP III 6/14/2014 AV SYSTEMS AND
EXTENDED INFRASTRUCTURE
ISSUED FOR BID



BUL. #56 11/22/2013 BULLETIN #56
(WITH RESPECT TO AV, EA AND EAP
DRAWINGS, INCLUDES "DELTA 1"
CHANGES)



11/1/2013 AV CHANGES PER SUNY
PURCHASE REQUIREMENTS AND
DESIGN DEVELOPMENT



KEY PLAN 1" = 50'

BID DOCUMENTS
AV PANEL ELEVATIONS -
LECTURE HALL

Scale: 6" = 1'-0"

3 OCTOBER 2011

SUCF Project No. 29401
Humanities Building Renovation
SUNY Purchase College
735 Anderson Hill Road, Purchase, New York 10577

Kliment Halsband Architects
322 Eighth Avenue, New York, NY 10001
Robert Silman Associates, PC
88 University Place, New York, NY 10003
Lakhani & Jordan Engineers
315 Madison Avenue Suite 1001, New York, NY 10017

CHA
111 Winners Circle, Albany, NY 12205
Mathews Nielsen Landscape
Architects, PC
120 Broadway Suite 1040, New York, NY 10271

Tilston Design Associates
40 North Street Suite 1600, New York, NY 10013
Sustainable Performance
Consulting, INC
Webster Woods #206 807 Ridge Road, Webster, NY 14580

TM Technology Partners, Inc.
250 West 39th Street 9th FL, New York, NY, 10018
Kirkegaard Associates
801 West Adams Street, Chicago, IL, 60607

Adelaide Environmental Health
Associates, Inc.
1511 Route 22 Suite C24 Brewster, NY, 10509
Argus Architecture & Preservation, P.C.
297 River Street Suite 303, Troy, NY 12180

AV311