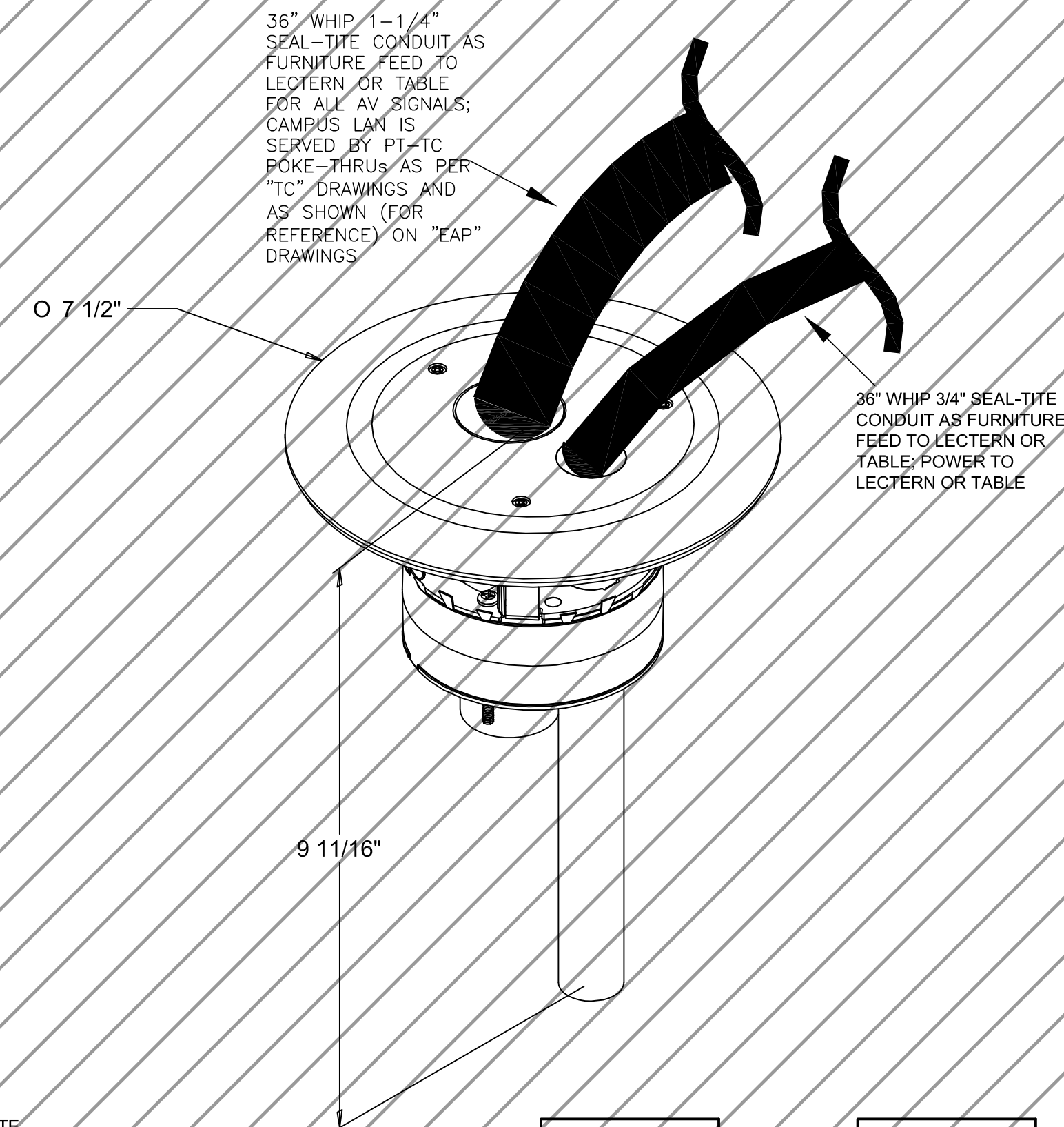
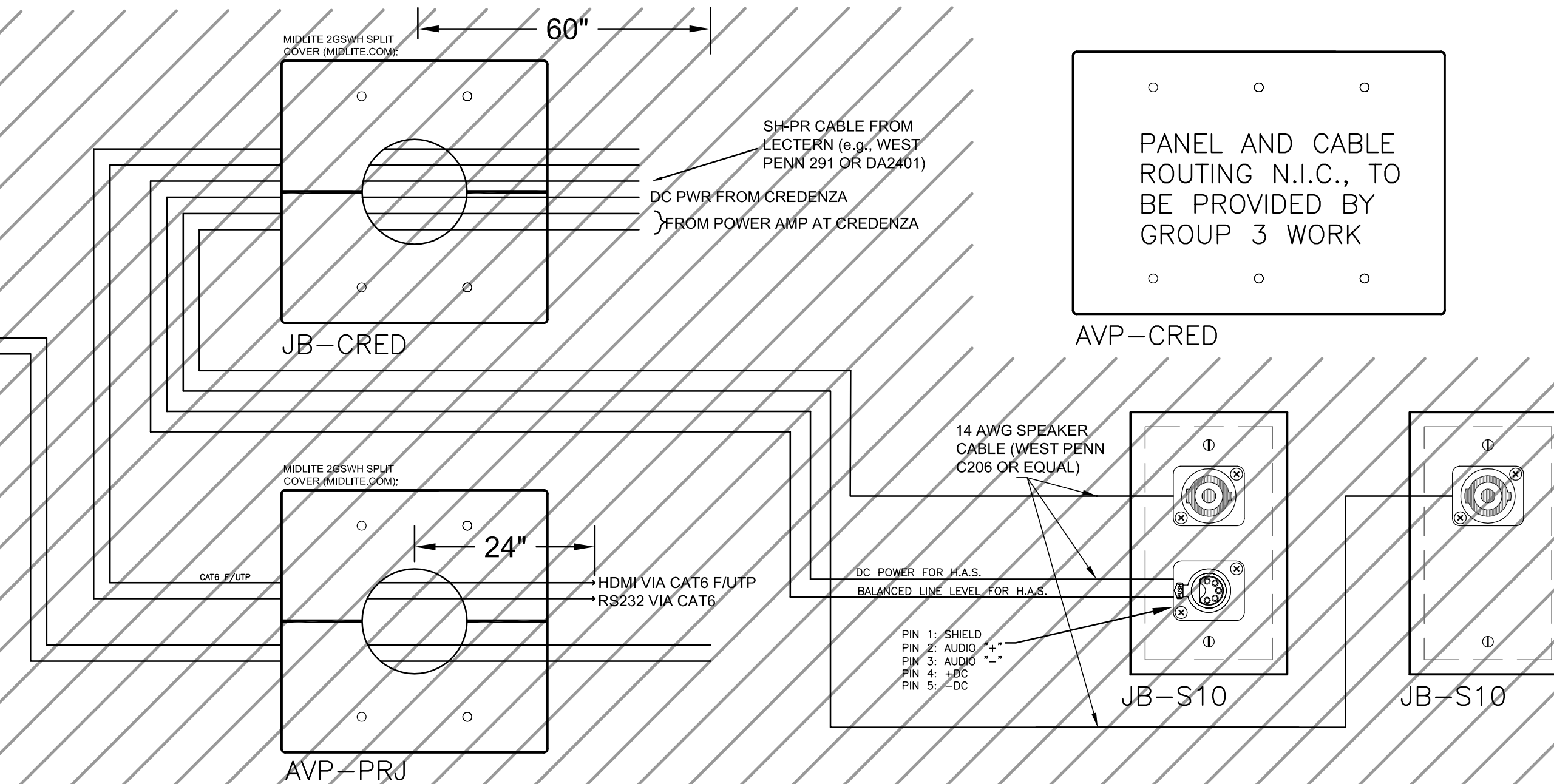


ALL WORK SHOWN ON THIS SHEET PER AV INFRASTRUCTURE EXCEPT AS NOTED



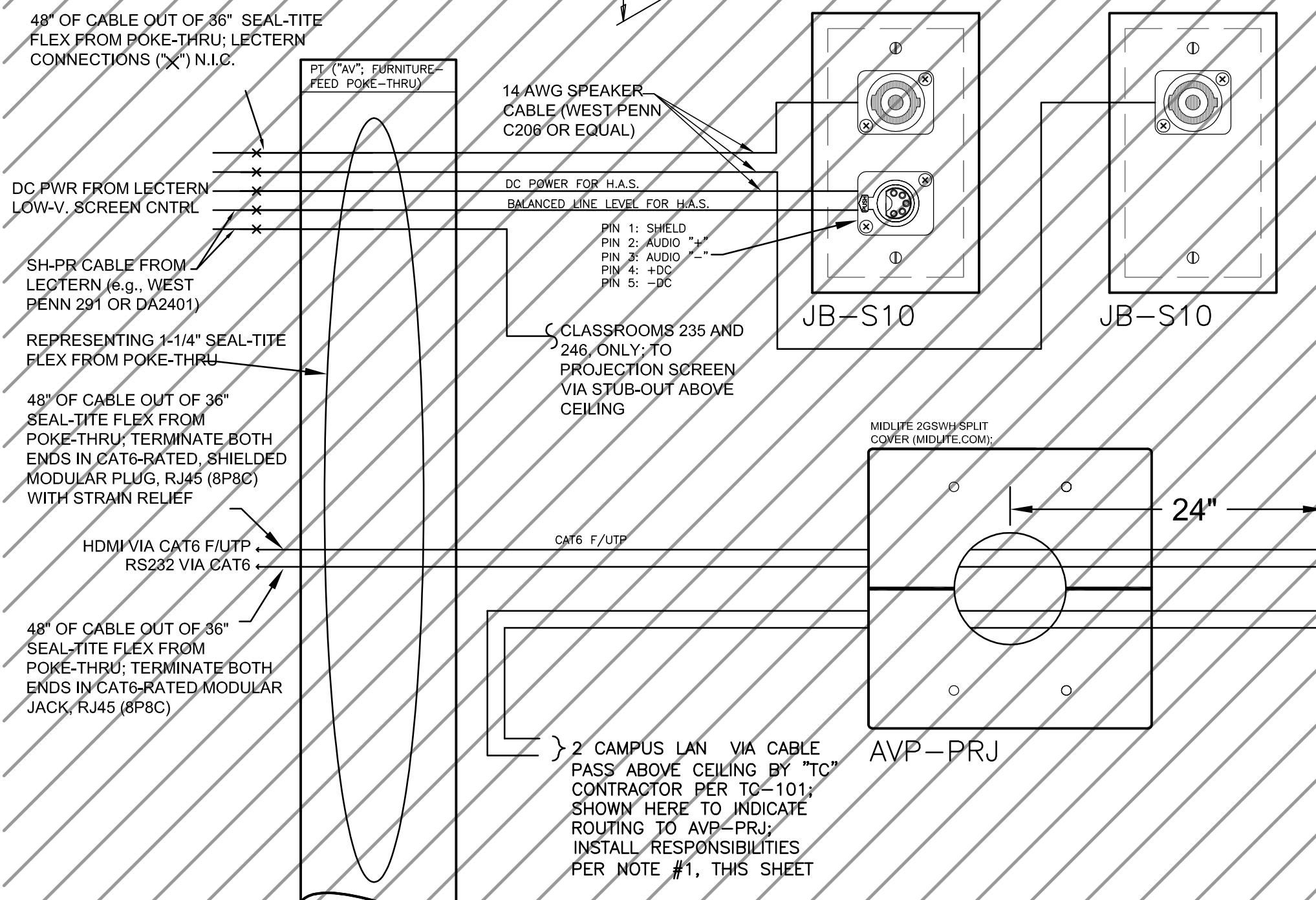
2 CAMPUS LAN VIA CABLE PASS ABOVE CEILING BY "TC" CONTRACTOR PER TC-101; SHOWN HERE TO INDICATE ROUTING TO AVP-PRJ; INSTALL RESPONSIBILITIES PER NOTE #1, THIS SHEET



PANEL AND CABLE ROUTING N.I.C., TO BE PROVIDED BY GROUP 3 WORK

EQUIPMENT SHOWN WITH THIS BACKGROUND HATCH PATTERN IS PROVIDED PER BASE INFRASTRUCTURE CONTRACT (NOT INCLUDED IN GROUP III AV SYSTEMS OR EXTENDED AV INFRASTRUCTURE CONTRACT).

TYP. AVP_s AND WIRING FOR RM. 050 AND 157



48" OF CABLE OUT OF 36" SEAL-TITE FLEX FROM POKE-THRU; LECTERN AND TABLE CONNECTIONS (X) N.I.C.

TWO AES/EBU-RATED SHIELDED PAIR CABLES FROM EQUIPMENT AT CONF/SEMINAR TABLE

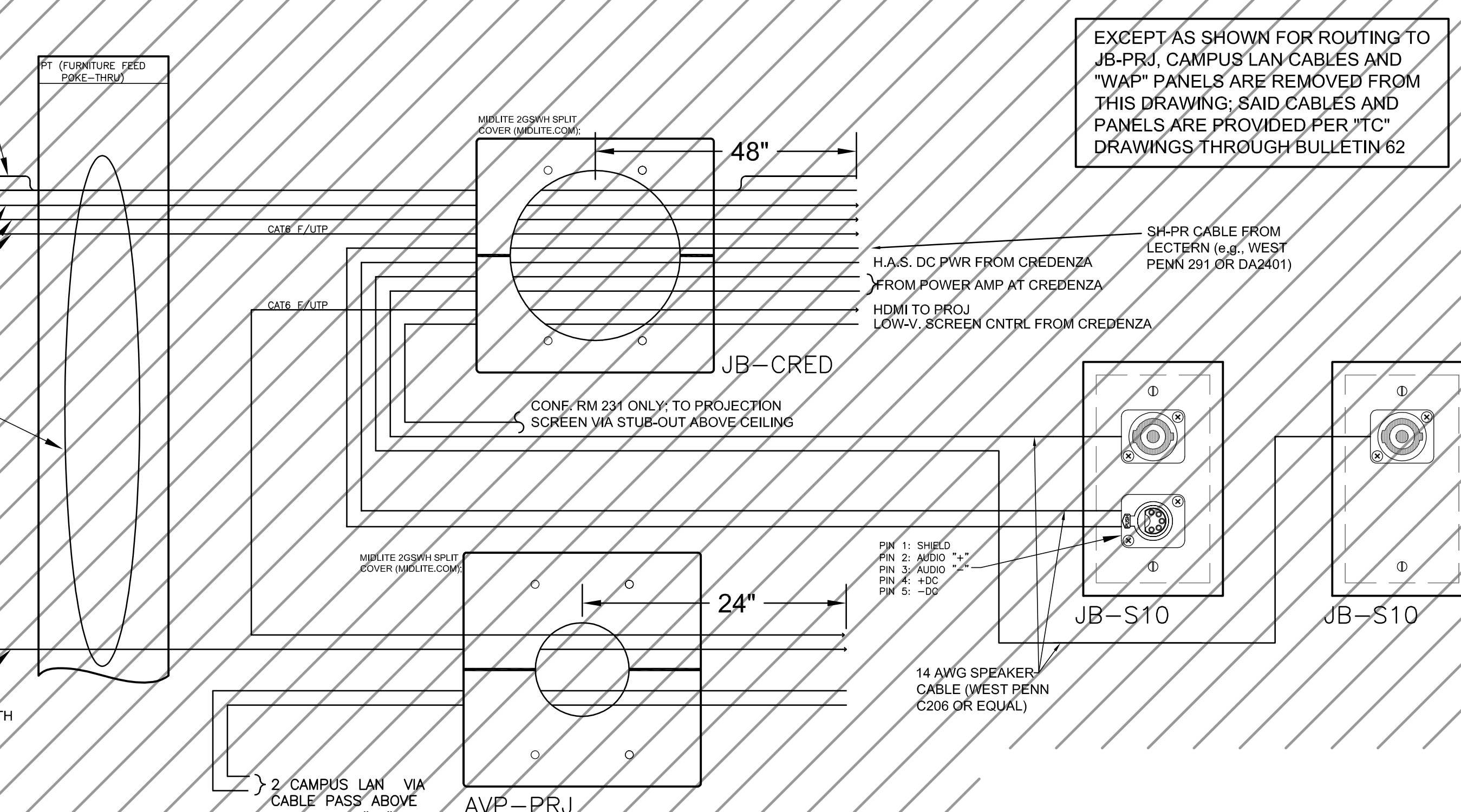
72" OF CABLE OUT OF 36" SEAL-TITE FLEX FROM POKE-THRU; TERMINATE BOTH ENDS IN CAT6-RATED MODULAR PLUG, RJ45 (8P8C)

REPRESENTING 1-1/4" SEAL-TITE FLEX FROM POKE-THRU

RS232 VIA CAT6

72" OF CABLE OUT OF 36" SEAL-TITE FLEX FROM POKE-THRU; TERMINATE BOTH ENDS IN CAT6-RATED MODULAR PLUG, RJ45 (8P8C)

2 CAMPUS LAN VIA CABLE PASS ABOVE CEILING BY "TC" CONTRACTOR PER TC-101; SHOWN HERE TO INDICATE ROUTING TO AVP-PRJ; INSTALL RESPONSIBILITIES PER NOTE #1, THIS SHEET



EXCEPT AS SHOWN FOR ROUTING TO JB-PRJ, CAMPUS LAN CABLES AND "WAP" PANELS ARE REMOVED FROM THIS DRAWING; SAID CABLES AND PANELS ARE PROVIDED PER "TC" DRAWINGS THROUGH BULLETIN 62

TYPICAL AVP_s AND WIRING FOR ROOMS AS IN 7.3 CLASSROOM 256

TYPICAL AVP_s AND WIRING FOR ROOMS AS IN 4.2 CONFERENCE RM 258

GROUP III 9/22/2014 AV ELECTRONICS SYSTEMS ISSUED FOR BID

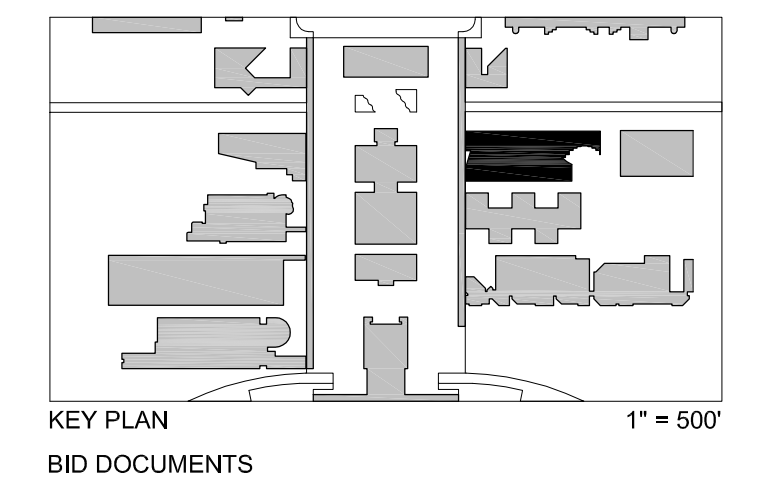
6 6/27/2014 AV MISC. CHANGES

5 4/6/2014 AV MISC. CHANGES

2 1/10/2014 AV CONDUIT AND POWER CHANGES PER SUNY PURCHASE REQUIREMENTS; INCLUDE WITH BUL. 56

BUL. #56 11/22/2013 BULLETIN #56 (WITH RESPECT TO AV, EA AND EAP DRAWINGS, INCLUDES "DELTA 1" CHANGES)

1 11/1/2013 AV SYSTEM CHANGES PER SUNY PURCHASE REQUIREMENTS AND DESIGN DEVELOPMENT



AV231 CLASSROOMS - AV SYSTEMS

- Scale: 6" = 1' FOR PANELS, OTHERWISE, N.T.S.
- 3 OCTOBER 2011
- SUCF Project No. 29401**
Humanities Building Renovation
SUNY Purchase College
 735 Anderson Hill Road, Purchase, New York 10577
- Kilment Halsband Architects**
 322 Eighth Avenue, New York, NY 10001
- Robert Silman Associates, PC**
 88 University Place, New York, NY 10003
- Lakhani & Jordan Engineers**
 315 Madison Avenue Suite 1001, New York, NY 10017
- CHA**
 111 Winners Circle, Albany, NY 12205
- Mathews Nielsen Landscape Architects, PC**
 120 Broadway Suite 1040, New York, NY 10271
- Tilloston Design Associates**
 40 Worth Street Suite 1580, New York, NY 10013
- Sustainable Performance Consulting, INC**
 Webster Woods, 8067 Ridge Road, Webster, NY 14590
- TM Technology Partners, Inc.**
 250 West 39th Street 9th FL, New York, NY 10018
- Kirkegaard Associates**
 801 West Adams Street, Chicago, IL, 60607
- Adelaide Environmental Health Associates, Inc.**
 1511 Route 22 Suite 1024 Brewster, NY, 10509
- Argus Architecture & Preservation, P.C.**
 297 River Street Suite 303, Troy, NY 12180

CAMPUS LAN CABLE INSTALL AND TERMINATION RESPONSIBILITIES NOTES: (SEE EA202)

1: ALL CAMPUS LAN CABLES SHALL BE FURNISHED, INSTALLED, TERMINATED AND TESTED BY TELECOMMUNICATIONS CONTRACTOR ("TC") ACCORDING TO THE REQUIREMENTS IN SPECIFICATION SECTION 27 00 01. LAN CABLES ARE SHOWN HEREIN TO INDICATE ULTIMATE TERMINATION LOCATIONS WITHIN THE AV SYSTEM. TERMINATIONS AT EQUIPMENT RACKS BY FUTURE WORK ORDER.

2: AV INFRASTRUCTURE CONTRACTOR SHALL COORDINATE SHARED AVP RESPONSIBILITIES WITH "TC".