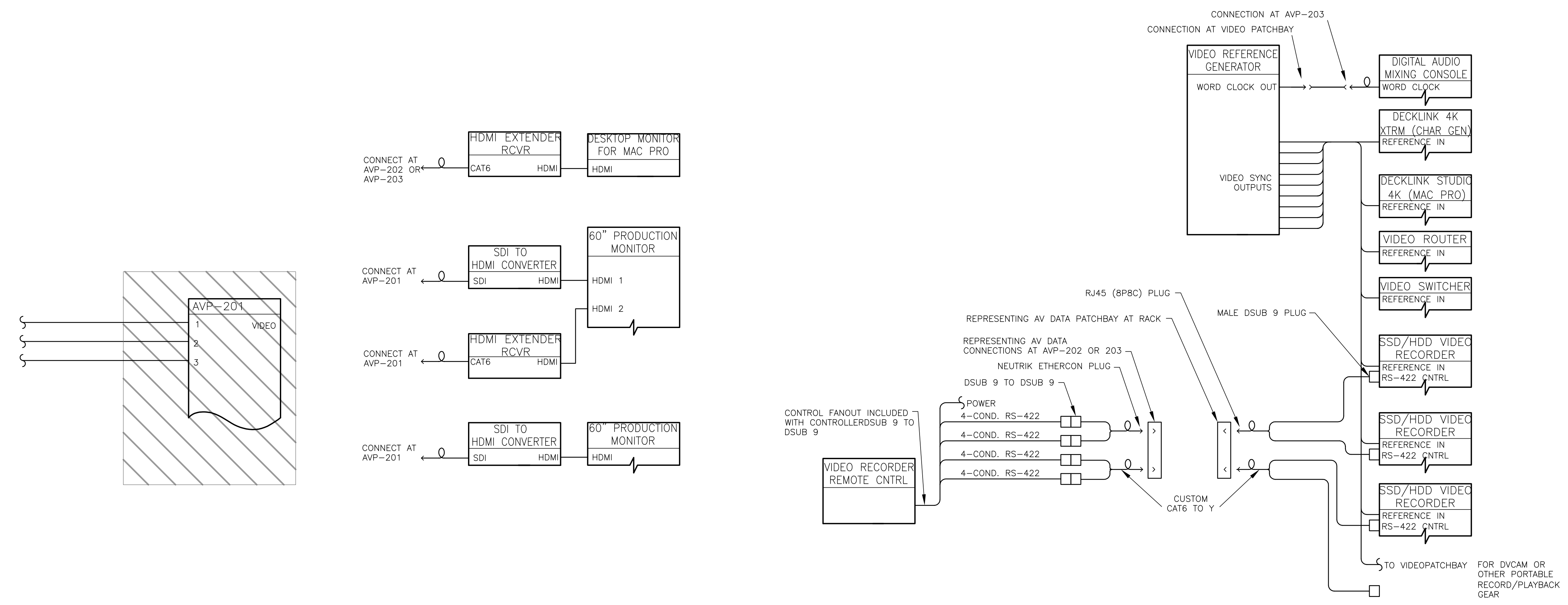
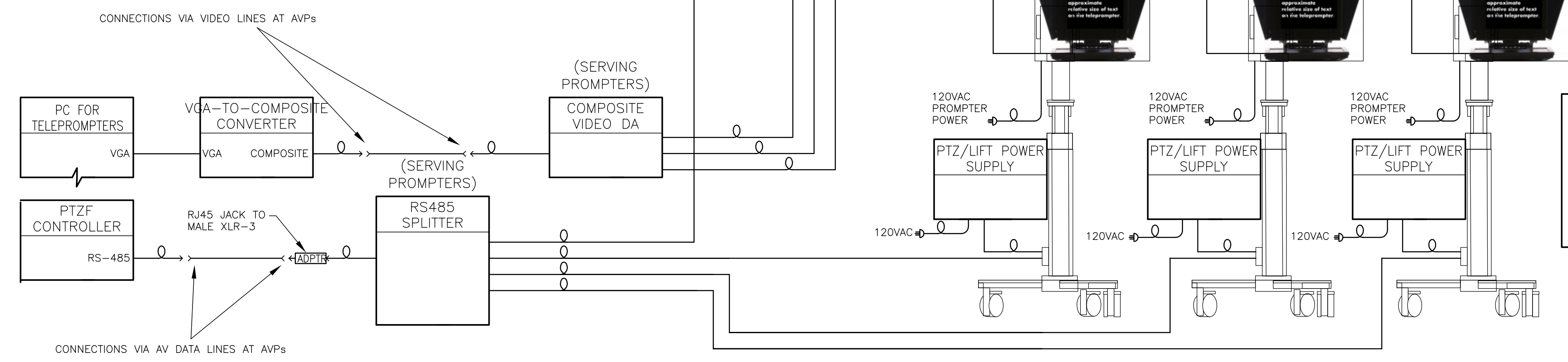
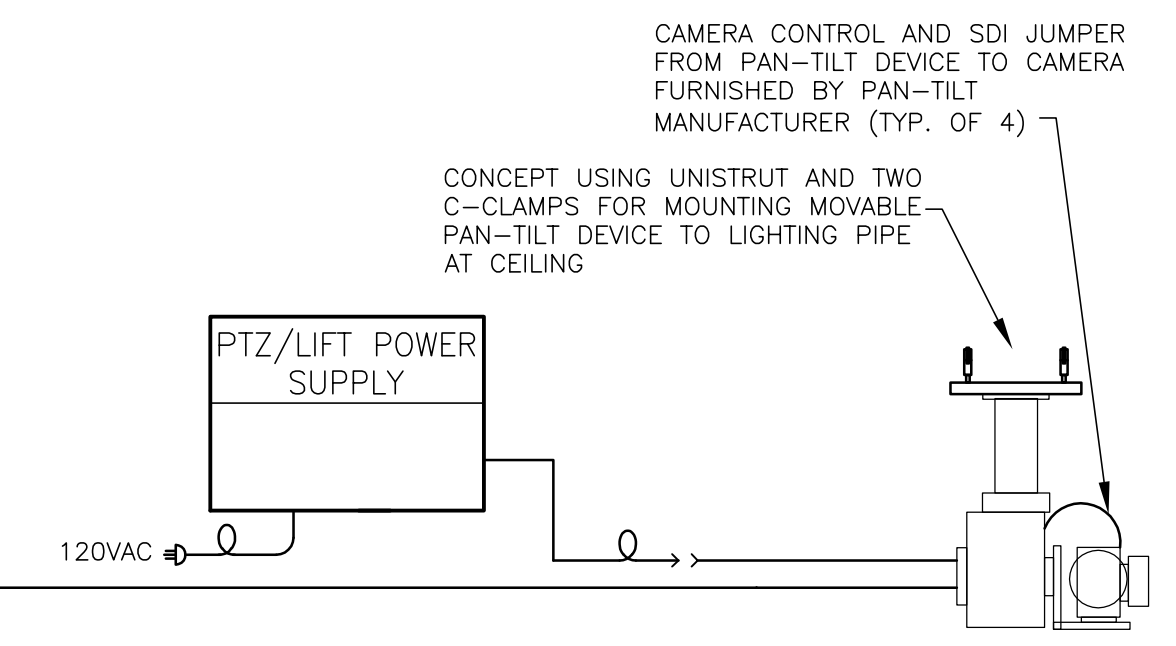


EQUIPMENT SHOWN WITH THIS BACKGROUND HATCH PATTERN IS PROVIDED PER BASE INFRASTRUCTURE CONTRACT (NOT INCLUDED IN GROUP III AV SYSTEMS OR EXTENDED AV INFRASTRUCTURE CONTRACT).



NOTE: SDI OUT FROM CAMERAS SHOWN ON SHEET AV221

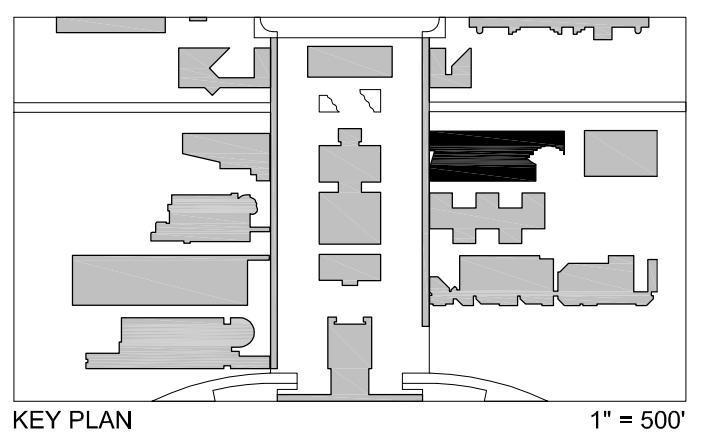
NOTE: CAMERA CONTROL VIA WIRED OR WIRELESS ETHERNET CONNECTION; WIRELESS PREFERRED DUE TO CABLE MANAGEMENT; CAMPUS IT GROUP TO VERIFY WIRELESS ALLOWED



NOTE: HERE, REPRESENTING CAMERAS WITH ATTACHED TELEPROMPTERS MOUNTED ON PAN-TILT DEVICES, WHICH IN TURN ARE MOUNTED TO MOTORIZED LIFTING PEDESTALS. EACH POWER SUPPLY IS ATTACHED ITS RESPECTIVE PEDESTAL AND POWERS PEDESTAL, PAN-TILT, CAMERA AND LENS. TELEPROMPTERS ARE POWERED SEPARATELY.

**GROUP III 9/22/2014 AV ELECTRONICS SYSTEMS ISSUED FOR BID**

**BUL. #56 11/22/2013 BULLETIN #56 (WITH RESPECT TO AV, EA AND EAP DRAWINGS, INCLUDES "DELTA 1" CHANGES)**



**AV222b** TV STUDIO, CONTROL ROOM AND AUDIO SUITE - VIDEO SYSTEMS

- 3 OCTOBER 2011
- SUCF Project No. 29401**  
**Humanities Building Renovation**  
**SUNY Purchase College**  
 735 Anderson Hill Road, Purchase, New York 10577
- Kliment Halsband Architects**  
 322 Eighth Avenue, New York, NY 10001
- Robert Silman Associates, PC**  
 88 University Place, New York, NY 10003
- Lakhani & Jordan Engineers**  
 315 Madison Avenue Suite 1001, New York, NY 10017
- CHA**  
 111 Winners Circle, Albany, NY 12205
- Mathews Nielsen Landscape Architects, PC**  
 120 Broadway Suite 1040, New York, NY 10271
- Tilloston Design Associates**  
 40 North Street Suite 1680, New York, NY 10013
- Sustainable Performance Consulting, INC**  
 Webster Woods Road 807 Ridge Road, Webster, NY 14590
- TM Technology Partners, Inc.**  
 250 West 39th Street 9th FL, New York, NY, 10018
- Kirkegaard Associates**  
 801 West Adams Street, Chicago, IL, 60607
- Adelaide Environmental Health Associates, Inc.**  
 1511 Route 22 Suite 224 Brewster, NY, 10509
- Argus Architecture & Preservation, P.C.**  
 297 River Street Suite 303, Troy, NY 12180