

ADDENDUM

001

Date: March 18, 2019
Attn: Project Bidders
Project Name: SUNY Purchase Hub – Café Addition and
Renovation
Project Address: 735 Anderson Hill Road
Purchase, NY 10577
PZD Project Number: 1517347
SUNY Project Number:

The following information shall amend the Construction Documents for the project listed above.

GENERAL COMMENTS:

CHANGE: ...

- Product data sheet provided for condensing units for reference.

DRAWING COMMENTS:

A-103, NOTE

- Clarification: Roof curbs are to be provided by others. Size of curbs have changed.

End of Architectural Addendum #1

Please feel free to contact me should you have any questions.

Sincerely,

Phase Zero Design INC

Jason Woodworth
Project Coordinator

SUNY PURCHASE COLLEGE
 CAFE RENOVATION
 735 ANDERSON HILL RD
 PURCHASE, NY 10577

NO.		REVISIONS	
NO.	DATE	DESCRIPTION	
1	03/18/2019	ADDENDUM 1	

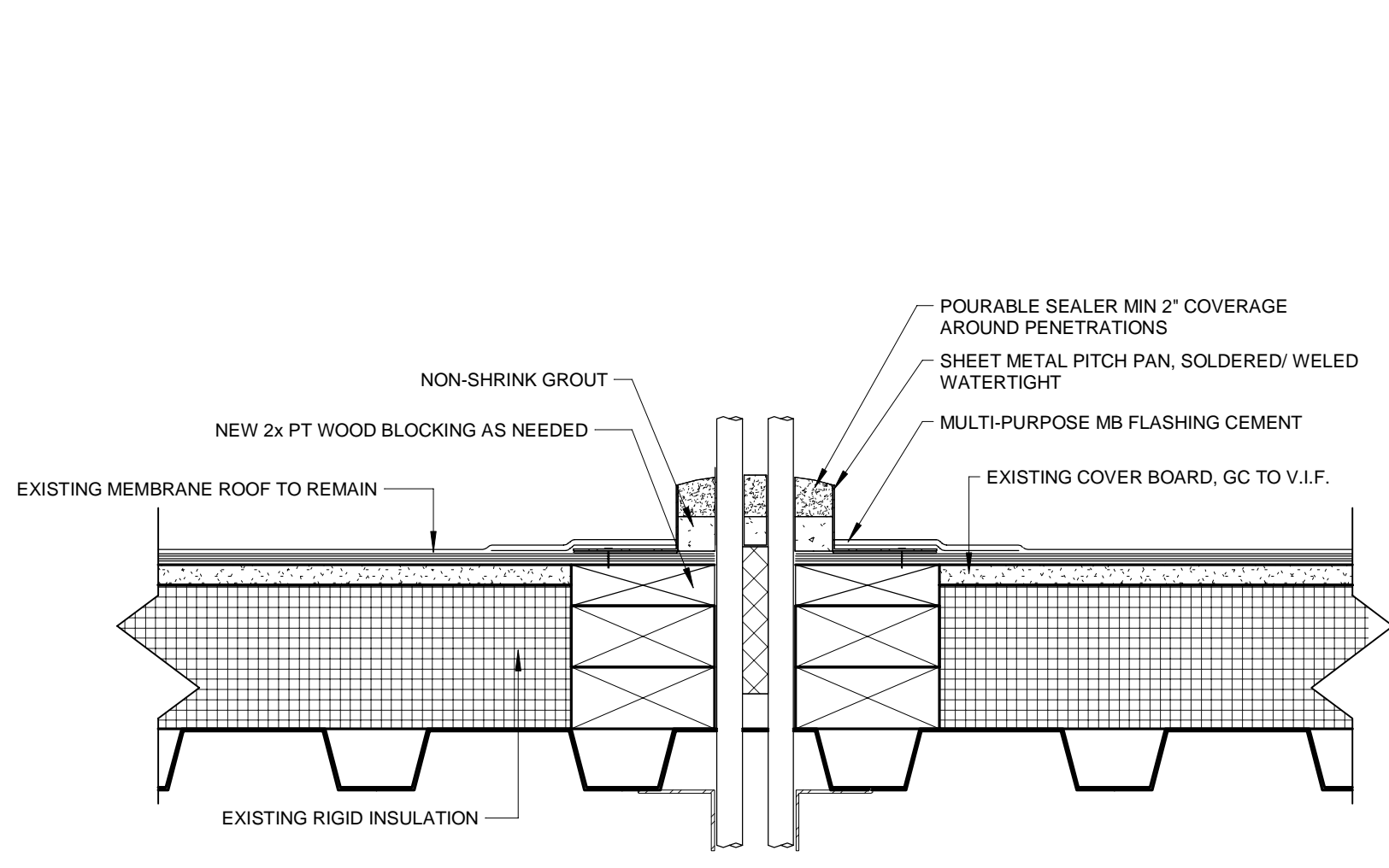
ISSUED FOR: BID
 ISSUED DATE: FEBRUARY, 15 2019

DRAWN BY: JW
 CHECKED BY: CM
 PROJECT NUMBER: 1517347
Copyright © by Phase Zero Design Corp. All Rights Reserved.

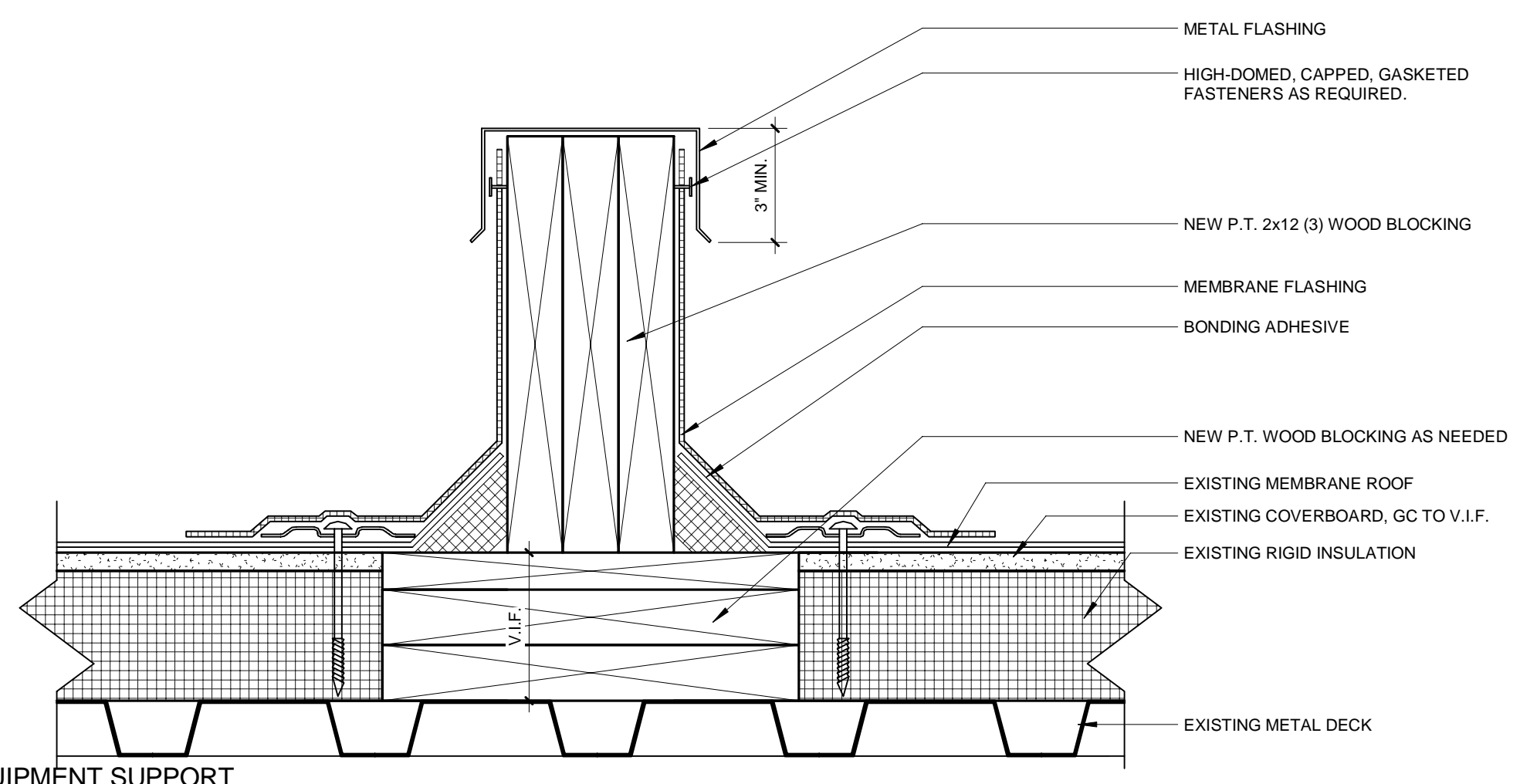
DRAWING NAME:
ROOF PLAN

DRAWING NO.
A103

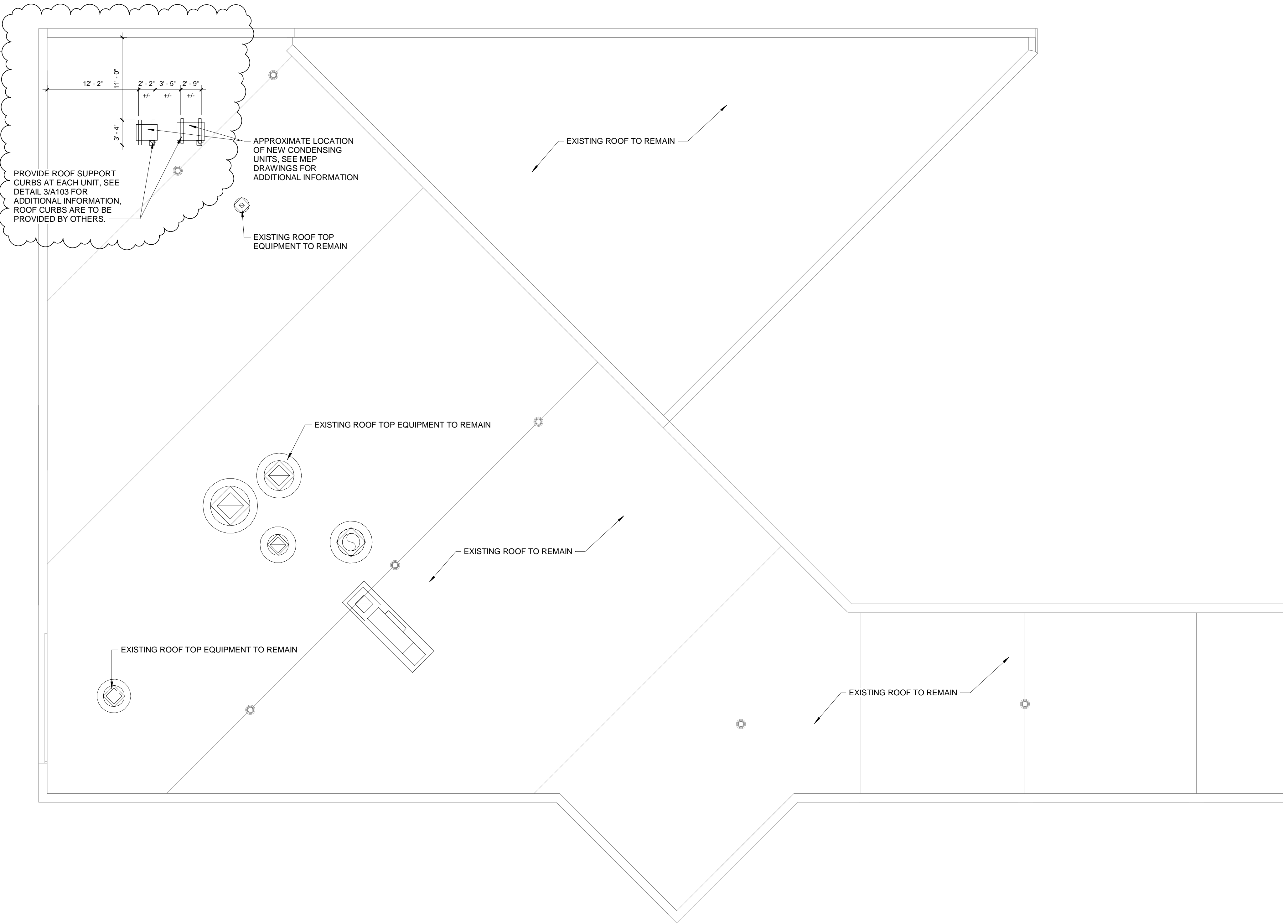
GENERAL ROOFING NOTES:
 1. ALL EXISTING ROOF TOP EQUIPMENT IS TO REMAIN.
 2. GC TO PROVIDE A PITCH POCKET AT EACH CONDENSING UNIT. SEE DETAIL 3/A103 FOR ADDITIONAL INFORMATION. GC TO COORDINATE PITCH POCKET LOCATION WITH CONDENSING UNIT MANUFACTURER. PITCH POCKET IS TO BE PROVIDED BY OTHERS.



④ ROOF DTL - PENETRATION POCKET
 3" = 1'-0"



③ ROOF DTL - EQUIPMENT SUPPORT CURB
 3" = 1'-0"



① ROOF PLAN
 1/8" = 1'-0"

Copeland Scroll™ air cooled refrigeration condensing units

1.5 to 5 HP extended medium temperature applications

Copeland Scroll FFAP models offer broad application flexibility and refrigerant options. Available in nominal sizes from 1.5 to 6 horsepower, FFAP units are ideal for many cooler and freezer applications including display cases, merchandisers, and walk-ins.

Reliability and efficiency

- Improved efficiency from 10%-15% annually
- Optimized for multiple applications

Application flexibility

- Operating range of -30°F to 45°F evap (R-404A)
- Designed for up to 110° ambient
- Designed to work with multiple refrigerants
- R-134a, R-22, R-404A, R-407A, R-407C, R-448A, R-449A
- Optional hood available

Diagnostic protection

Equipped with electronic unit controller:

- Troubleshooting diagnostics
- System protection
- Reduces potential service costs



Fully featured

- Integrated electronic controls
- Advanced system protection
- Factory installed filter drier, moisture indicator/sight glass, and suction accumulator are standard
- Part of the industry's broadest line of integral horsepower condensing units for refrigeration applications

Physical and electrical data

Model	Voltages*	Comp	Overall dimensions (In)			Connecting lines		Minimum circuit ampacity - Max fuse size				Pump down capacity (lbs)	Ship weight (lbs)
			L	W	H	Suction	Liquid	208/230-1	230-3	460-3	575-3		
FFAP-015Z	CFV, TFC, TFD	ZS09KAE	24.1	18.3	16.6	7/8 S	3/8 S	13.9 - 20	11.4 - 15	6.4 - 15		6.4	121
FFAP-017Z	CFV, TFC, TFD	ZS11KAE	24.1	18.3	16.6	7/8 S	3/8 S	17.2 - 25	14.4 - 20	7.1 - 15		6.4	130
FFAP-020Z	CFV, TFC, TFD	ZS13KAE	25.2	34	19	7/8 S	3/8 S	16.8 - 25	13.9 - 20	7.1 - 15		11.2	191
FFAP-022Z	CFV, TFC, TFD	ZS15KAE	25.2	34	19	7/8 S	3/8 S	22.4 - 35	16.1 - 20	15-Oct		11.2	191
FFAP-030Z	CFV, TFC, TFD	ZS19KAE	25.2	34.1	19	7/8 S	3/8 S	25.3 - 40	19.9 - 30	11.3 - 15		11.2	209
FFAP-032Z	CFV, TFC, TFD	ZS21KAE	25.2	34.1	19	7/8 S	3/8 S	31.8 - 50	21.8 - 30	11.8 - 15		11.2	209
FFAP-035Z	CFV, TFC	ZS26KAE	25.2	34.1	19	7/8 S	3/8 S	32.3 - 50	22.2 - 30			11.2	223
FFAP-040Z	CFV, TFC, TFD	ZS26KAE	28.2	44.1	26.8	1 1/8 S	1/2 S	33.1 - 50	23 - 35	15-Nov		18.4	290
FFAP-042Z	CFV, TFC, TFD	ZS33KAE	28.2	44.1	26.8	1 1/8 S	1/2 S	38.9 - 60	31.5 - 50	14.9 - 20		18.4	296
FFAP-050Z	CFV, TFC, TFD, TFE	ZS38K4E	28.2	44.1	26.8	1 1/8 S	1/2 S	43.4 - 70	30.4 - 45	14.4 - 20	11.9 - 15	18.4	297
FFAP-060Z	TFC, TFD	ZS45K4E	28.2	44.1	26.8	1 1/8 S	1/2 S		33.5 - 50	14 - 20		18.4	342

* CFV = single phase, 208/230 volt TFC = three phase, 208/230 volt TFD = three phase, 460 volt TFE = three phase, 575 volt.
All models available for use with R-22, R-134a, R-404A, R-407C. See OPI for current list of approved refrigerants.

BOM Feature	-071	-072	-075
Fan motor	Fixed speed	Fixed speed	Fixed speed
Head pressure control	Fan cycle	N/A	Head Pressure Control Valve
Service valves	Steel	Steel	Steel
Receiver	✓	✓	✓
Liquid shut off	✓	✓	✓
Moisture indicator	✓	✓	✓
Filter drier	✓	✓	✓
Fixed HP /Adj. LP	✓	✓	✓
CCH	✓		✓
Accumulator	✓		Specific models

Model	Capacity (BTU/Hr) 90° Amb, -20° Evap					90° amb -20° evap R-404A
	R-134a	R-22	R-404A	R-407C	R-448A R-449A	
FFAP-015Z	7,540	11,400	11,500	10,400	10,500	4,000
FFAP-017Z	8,900	13,100	13,100	12,500	12,300	5,200
FFAP-020Z	10,200	15,200	15,300	14,000	13,800	6,280
FFAP-022Z	12,300	18,300	18,900	17,300	16,900	7,360
FFAP-030Z	14,100	20,800	21,600	19,700	19,100	8,330
FFAP-032Z	18,500	27,400	27,300	25,400	26,600	11,200
FFAP-035Z	20,300	29,600	27,600	24,400	28,100	12,000
FFAP-040Z	21,300	31,700	34,200	30,700	30,800	12,900
FFAP-042Z	26,100	38,700	40,800	36,300	38,900	15,800
FFAP-050Z	29,400	43,100	45,400	41,600	44,600	16,900
FFAP-060Z	34,700	51,000	50,500	50,500	56,500	22,300

Capacities are at 60 Hertz with 40° return gas and 5°F subcooling

Base Model	MT Indoor AWEF							MT Outdoor AWEF							Optional Hood
	134a	22	404A	407A	407C	448A	449A	134a	22	404A	407A	407C	448A	449A	
FFAP-015Z	6.4	6.68	6.04	6.34	5.8	5.68	5.68	8.45	9.01	8.83	9.02	8.62	8.23	8.24	505-7066-01
FFAP-017Z	6.52	6.48	6	6.2	5.86	5.81	5.76	8.72	8.96	8.91	9	8.77	8.49	8.49	505-7066-01
FFAP-020Z	5.75	6.07	5.72	5.74	5.39	5.31	5.31	7.59	8.23	8.25	8.16	7.91	7.63	7.63	505-7066-02
FFAP-022Z	6.17	6.18	5.92	5.89	5.68	5.57	5.57	8.18	8.47	8.69	8.55	8.4	8.08	8.08	505-7066-02
FFAP-030Z	6.65	6.64	6.47	6.47	6.07	5.96	5.98	8.69	8.97	9.32	9.14	8.92	8.54	8.54	505-7066-02
FFAP-032Z	7.11	6.93	6.18	6.35	6.42	6.05	6.05	9.54	9.63	9.31	9.34	9.59	9.06	9.05	505-7066-02
FFAP-035Z	7.14	6.87	6.03	6.21	6.4	5.92	5.93	9.71	9.68	9.21	9.33	9.63	8.87	8.87	505-7066-02
FFAP-040Z	7.24	7.54	6.82	6.9	6.84	6.44	6.44	9.19	9.74	9.48	9.52	9.73	9.07	9.06	505-7066-03
FFAP-042Z	7.27	7.37	6.74	6.66	6.76	6.67	6.66	9.4	9.77	9.61	9.31	9.76	9.52	9.52	505-7066-03
FFAP-050Z	6.92	NA	5.94	6.25	6.27	NA	NA	8.03	NA	8.04	8.27	8.35	NA	NA	505-7066-03
FFAP-060Z	7.02	6.6	6.09	6.37	6.3	6.21	6.2	8.9	8.65	8.51	8.69	8.57	8.65	8.64	505-7066-03



Scan for more information or visit
Climate.Emerson.com/OPI

2018ECT-38 (6/18) Emerson and Copeland Scroll are trademarks of Emerson Electric Co. or one of its affiliated companies.
©2018 Emerson Climate Technologies, Inc. All rights reserved.

Climate.Emerson.com

EMERSON. CONSIDER IT SOLVED.™